



THE AUSTRALIAN CATTLE DOG

Judges' Education Presentation



THE AUSTRALIAN CATTLE DOG AKC STANDARD



General Appearance

Strong, compact, symmetrically built working dog

Able and willing to carry out tasks however arduous

Substance, power, balance and hard muscular condition convey impression of great agility, strength and endurance

Any tendency to grossness or weediness is a serious fault



Ludwig









Characteristics

Prime function, and one in which he has no peer, is the control and movement of cattle in both wide open and confined areas.

Always alert, extremely intelligent, watchful, courageous and trustworthy

An implicit devotion to duty making it an ideal dog







Temperament

Loyalty and protective instincts make it a self-appointed guardian to the Stockman, his herd and his property

Naturally suspicious of strangers but must be amenable to handling, particularly in show ring.

Any feature of temperament or structure foreign to a working dog must be regarded as a serious fault.







© 2003 Patrick Cagney
Photography

Head and Skull

Strong, in balance with other proportions of dog, in keeping with its general conformation

Broad skull--slightly curved between ears, flattening to slight but definite stop.

**Cheeks muscular, neither coarse nor prominent
underjaw strong, deep and well developed**

Foreface-broad, well filled in under eyes, tapering gradually to form medium length, deep, powerful muzzle

Skull and muzzle on parallel planes

Lips are tight and clean

Nose black

Stop: Slight but definite.

Nose: Thick
irrespective of
size of snout.

Pericard: Broad
and well filled
in under the eye.

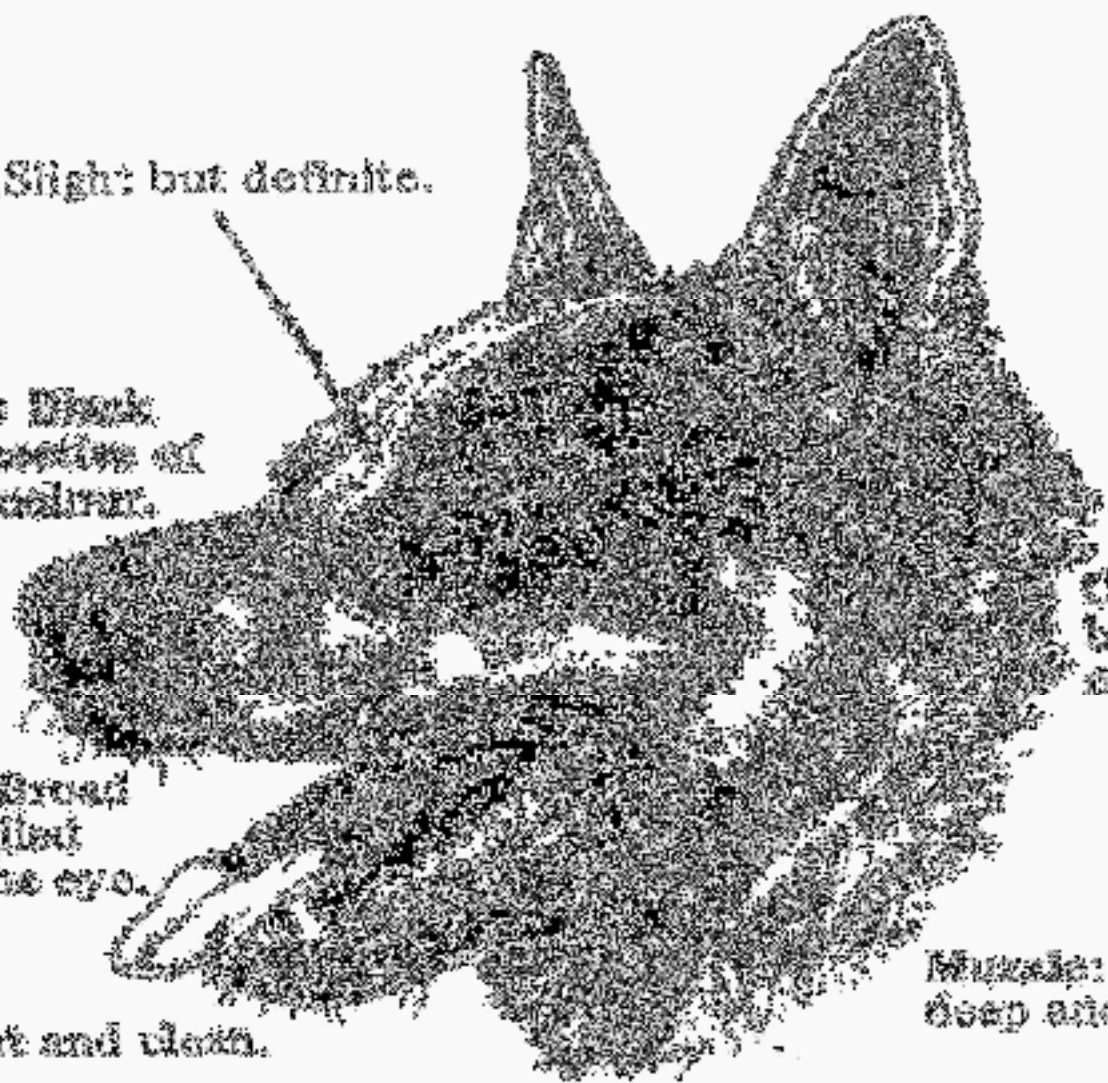
Lips: Tight and clean.

Under Jaw: Strong, deep
and well developed.

Cheek: Muscular,
but not carrying
the prominence.

Muscle: Medium length
deep and powerful.

Teeth: Sound, strong and regularly
spaced, gripping with a scissor like
action, the lower incisors close
behind and just touching the upper.
Not to be unduly hot nor excessive.











Eyes

Oval shape, medium size

Neither prominent nor sunken

Must express alertness and intelligence

Warning or suspicious glint is characteristic when approached by strangers

Eye color, dark brown







Ears

Of moderate size, preferably small rather than large,

Broad at base--muscular, pricked

Moderately pointed--neither spoon nor bat eared

Ears set wide apart on skull, inclining outwards

Sensitive in their use, pricked when alert

Leather--thick in texture

Inside of ear fairly well furnished with hair



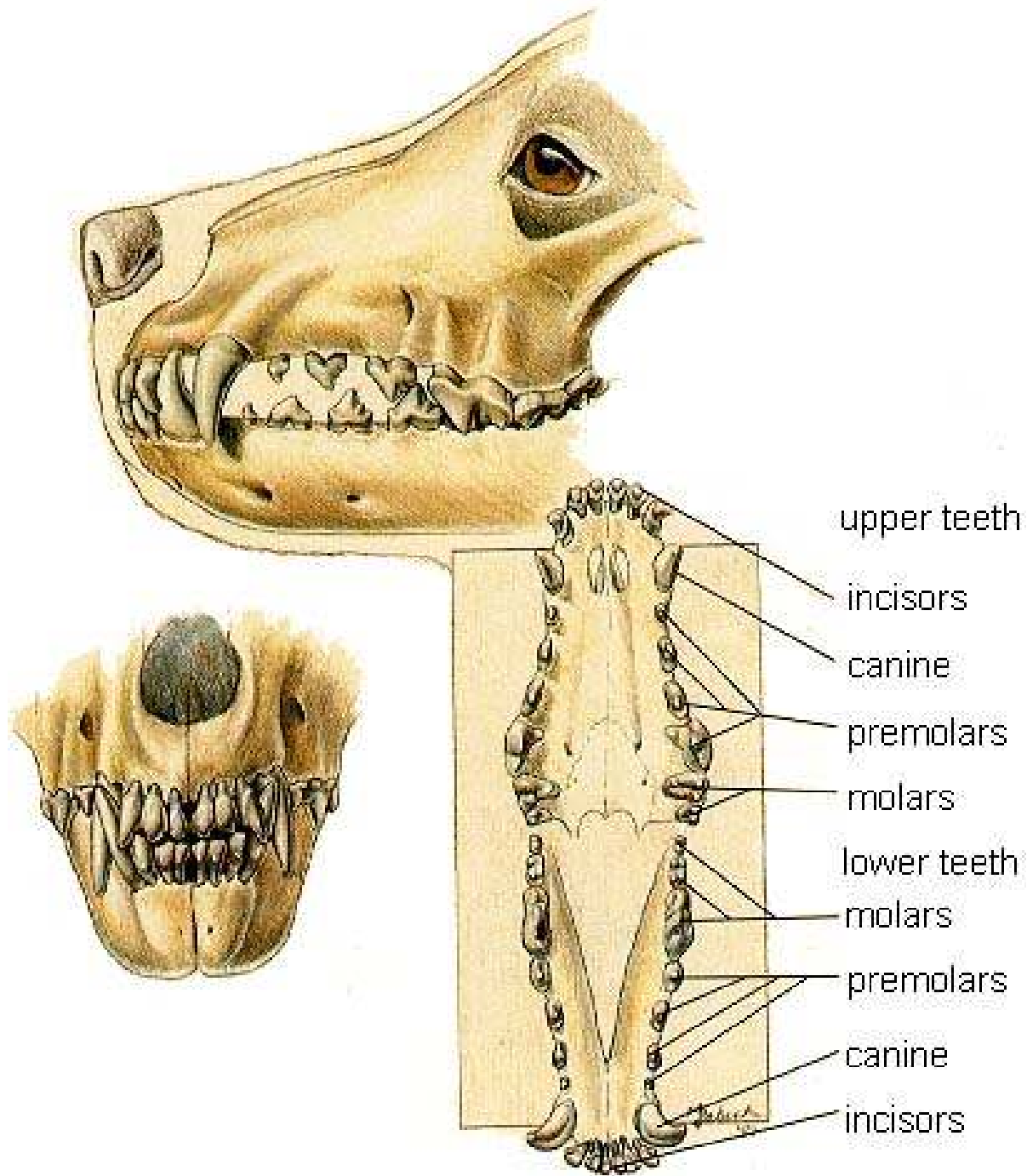


Mouth

Sound, strong and evenly spaced

Gripping with a scissor-bite, lower incisors close behind and just touching the upper

As the dog is required to move difficult cattle by heeling or biting, teeth which are sound and strong are very important





Neck

Extremely strong, muscular

Medium length

Broadening to blend into body

Free from throatiness







Forequarters

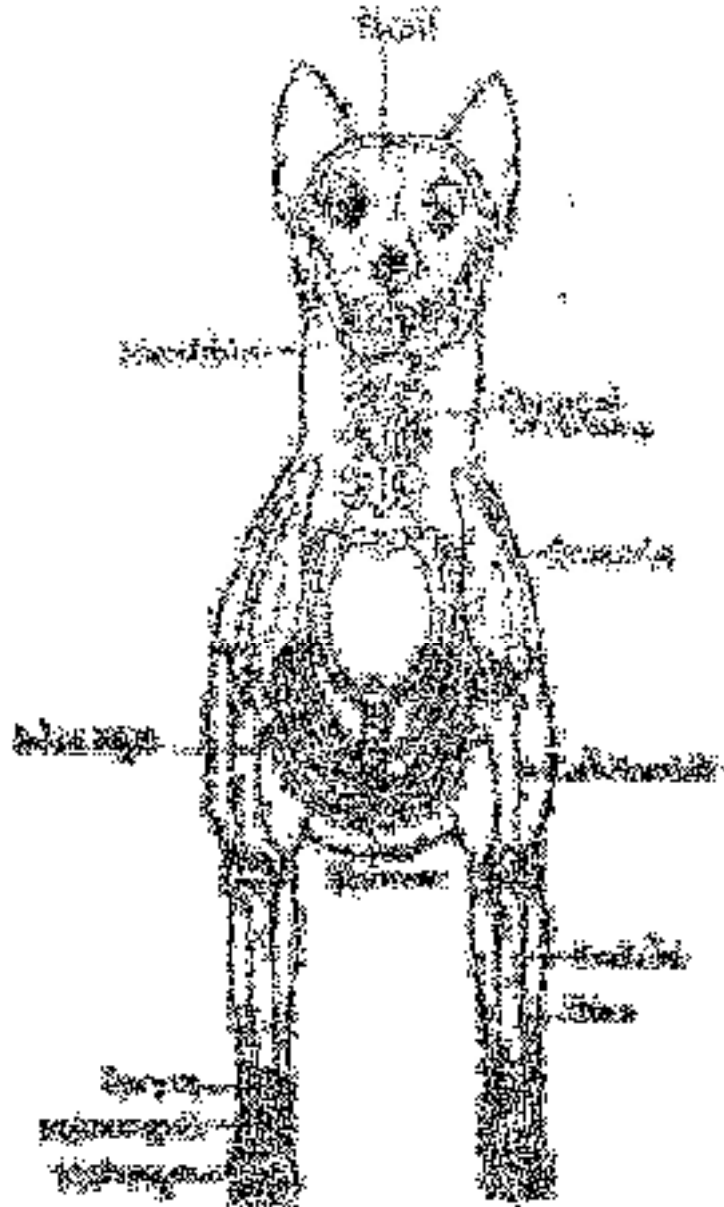
Shoulders strong, sloping, muscular and well angulated to upper arm

Not too closely set at point of withers

Forelegs have strong, round bone, extending to feet, straight and parallel when viewed from front

Pasterns show flexibility with slight angle to forearm when viewed from side

Although shoulders are muscular and bone strong, loaded shoulders and heavy fronts hamper correct movement and limit working ability



FRONT VIEW







Body

Length of the body from the point of the breast bone, in a straight line to the buttocks, is greater than height at withers, as 10 is to 9

Topline is level

Back strong with ribs well sprung and carried well back not barrel ribbed

Chest is deep, muscular and moderately broad

Loins broad, strong and muscular and the flanks deep.

Strongly coupled







Hindquarters

Hindquarters are broad, strong and muscular

Croup is rather long and sloping

Thighs long, broad and well developed

Stifles well turned and the hocks strong and well let down

When viewed from behind, the hind legs, from hocks to feet, are straight and placed parallel, neither close nor too wide apart







Feet

Feet should be round

Toes short, strong, well arched and held close together

Pads are hard and deep

Nails must be short and strong







Tail

Set on of tail is moderately low, following contours of sloping croup

Length to reach approximately to hock

At rest it should hang in a very slight curve

During movement or excitement tail may be raised

Under no circumstances should any part of tail be carried past a vertical line drawn through root

Tail should carry a good brush



Gait/Movement

Action is true, free, supple and tireless

Movement of the shoulders and forelegs is in unison with the powerful thrust of hindquarters

Capability of quick, sudden movement is essential

Soundness-paramount importance

Serious faults--stiltiness, loaded or slack shoulders, straight shoulders, weakness at elbows, pasterns or feet, straight stifles, cow or bow hocks

When trotting feet tend to come closer together at ground level as speed increases, but when dog comes to rest should stand four square





Custom Dog Images



Coat

**Smooth, double coat with short dense undercoat
outer-coat close**

Each hair straight, hard, lying flat, so rain-resisting

**Under body, to behind the legs, coat is longer and
forms mild breeching near thigh**

**On head (including the inside of the ears), to the front
of the legs and feet, hair is short**

Along neck--longer and thicker

Either too long or too short-fault

**On average, hairs on the body - 2.5 to 4 cms (approx. 1-
1.5 ins) in length**









Color (Blue)

Blue, blue-mottled, or blue speckled with or without other markings

Permissible markings--

Black, blue or tan markings on head, evenly distributed for preference

Forelegs-tan midway up legs, extending up the front to breast and throat, with tan on jaws

Hindquarters-tan inside hindlegs, inside thighs, showing down front of stifles, broadening out to outside of hind legs from hock to toes

Tan undercoat permissible on body providing does not show through blue outer coat

Black markings on body not desirable







Seale









Creeping Tan



Color (Red Speckle)

**Should be good even red speckle all over,
including the undercoat**

Undercoat-neither white nor cream

With or without darker red markings on head

Even head markings are desirable

**Red markings on the body are permissible but not
desirable.**











Size

Height:

Dogs 46-51 cms (approx. 18-20 ins) at withers

Bitches 43-48 cms (approx. 17-19 ins) at withers



Faults

Any departure from the foregoing points should be considered a fault

The seriousness with which the fault should be regarded should be in exact proportion to its degree

Remember

 The ACD is a dog without exaggeration...

“Moderate, moderate, moderate”

 When making close calls--remember that the ACD is a working dog, bred to herd cattle

Faults that impede working ability are the most serious