

Judging points

- † No disqualifications
- † Bitches should not be penalized for having less skin & wrinkle than dogs
- † Select the best combination of substance, power, balance & elegance
- † Faults negatively affecting endurance are more serious than faults in bite, tail carriage, color, expression, etc., as long as breed type is not lost
- † MANY owner-handlers in this breed. Forgive them.

FORM FOLLOWS FUNCTION

Nose = large, to gather in scent

Ears = long, to sweep scent toward nose

Skin = thin & loose, to protect eyes and body from rough vegetation; also helps to collect scent

Neck = long, to reach the ground

Bone = heavy, for substance

Feet = well-knuckled & thickly padded, for shock absorption

Chest & Body = deep, for endurance

Angulation = moderate & balanced, for endurance

Movement = loose, elastic, converging somewhat toward the midline, to go for miles if necessary

Overall impression

- Real substance:
 - Heavy
 - Muscular
 - Strong
 - Large
 - Deep
- Combined with athleticism

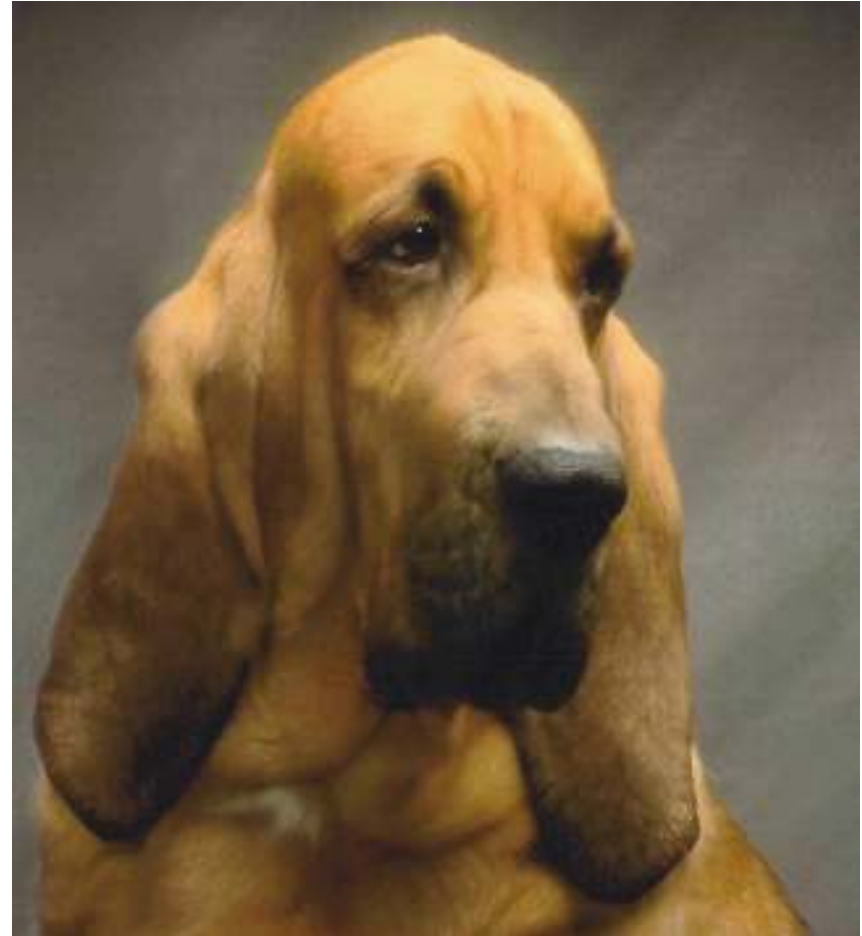


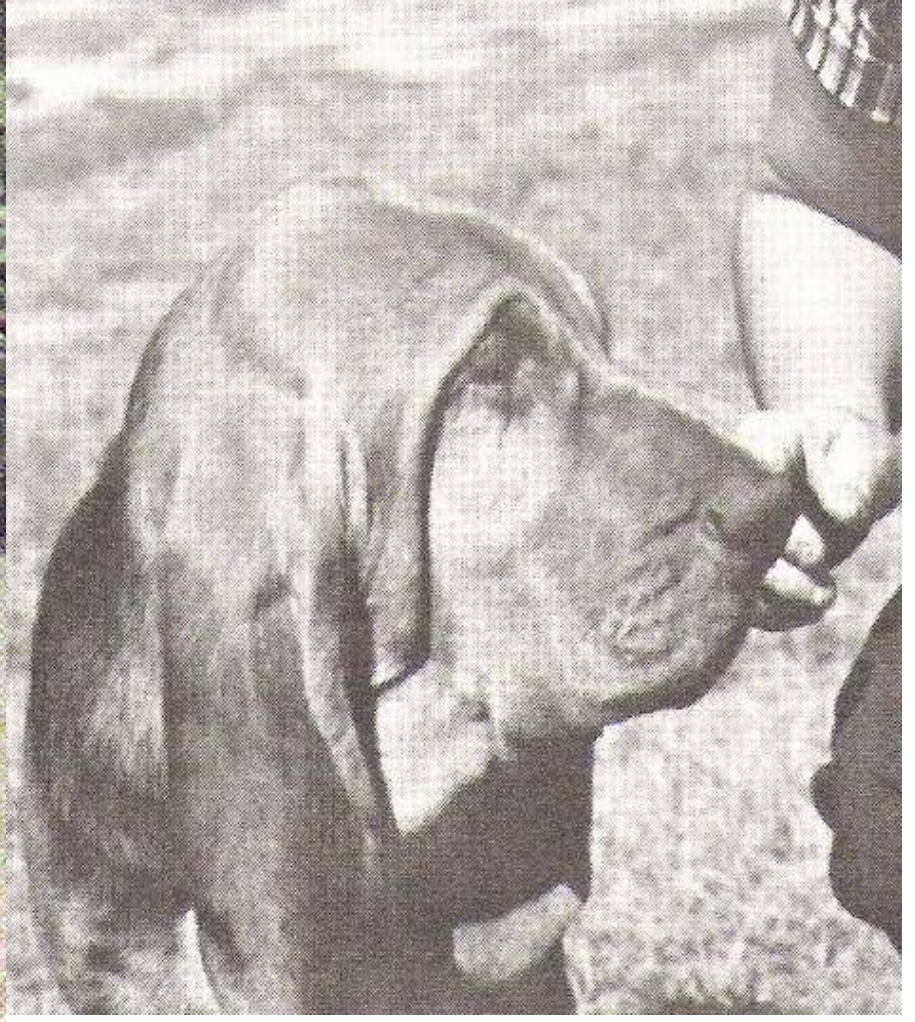


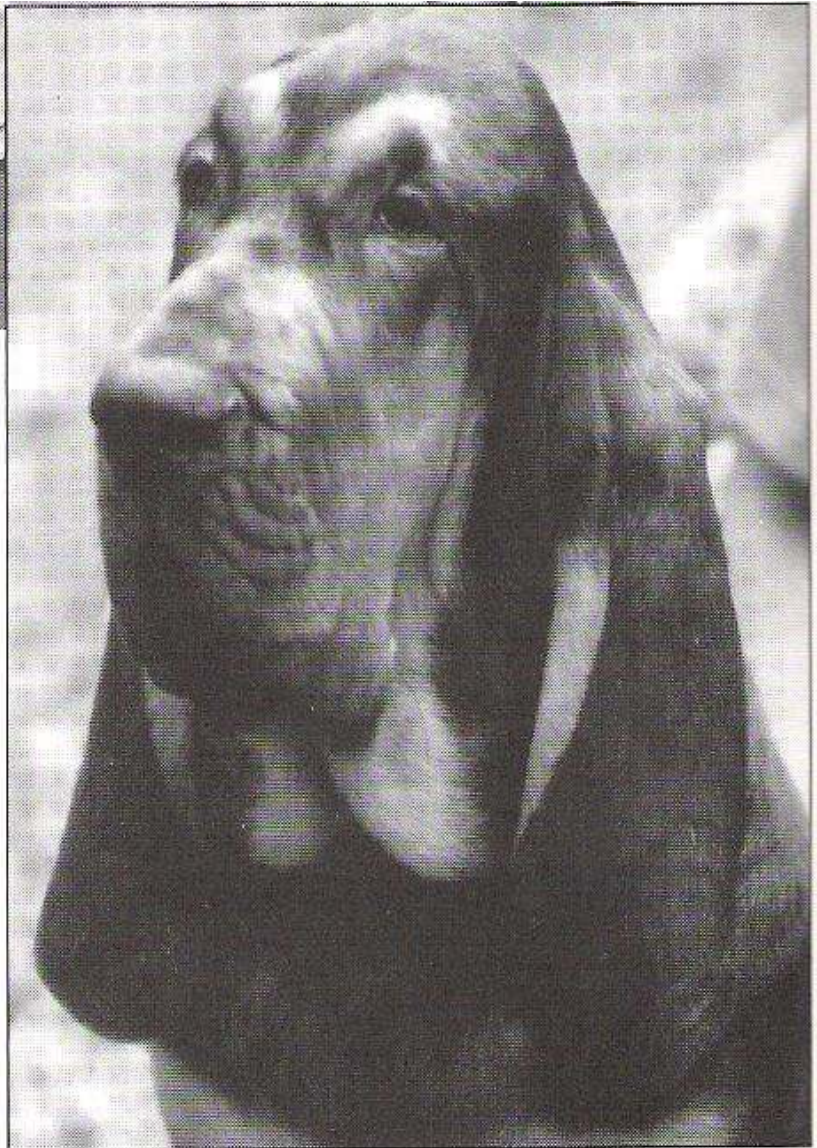


Head

- Long and narrow
- Relatively parallel planes
 - In profile and
 - Looking down from above
- Muzzle at least $\frac{1}{2}$ the length of the head
- Prominent occiput
- Stop is not abrupt







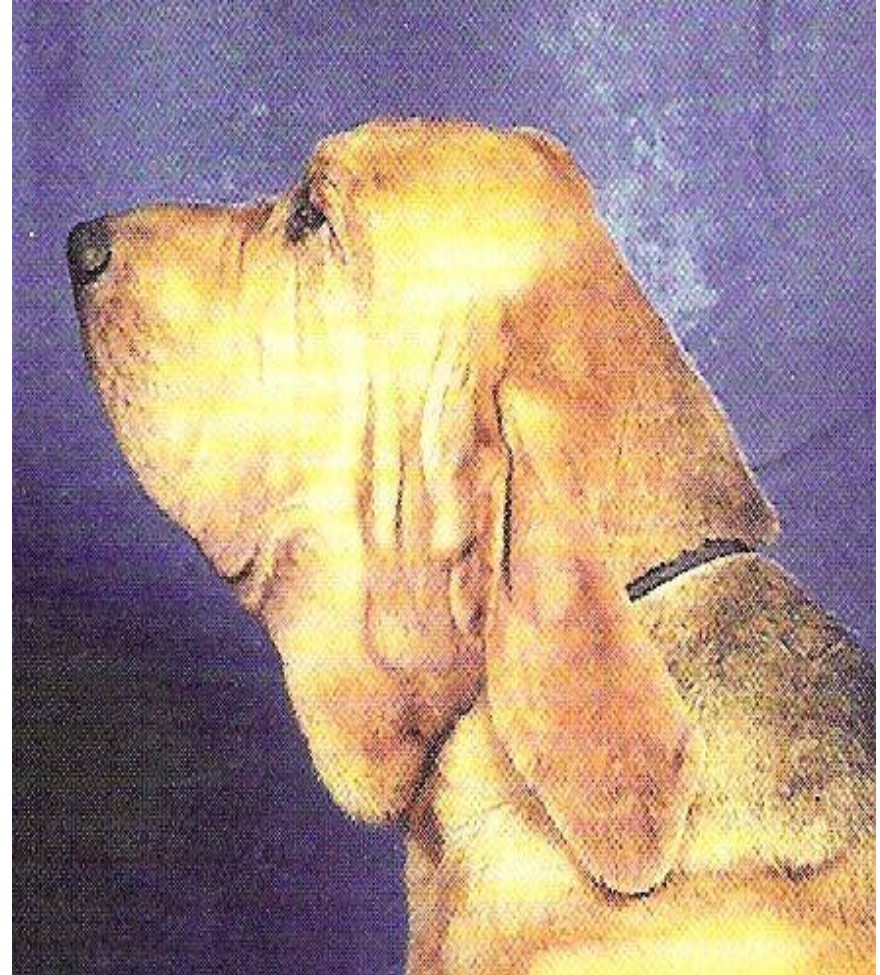








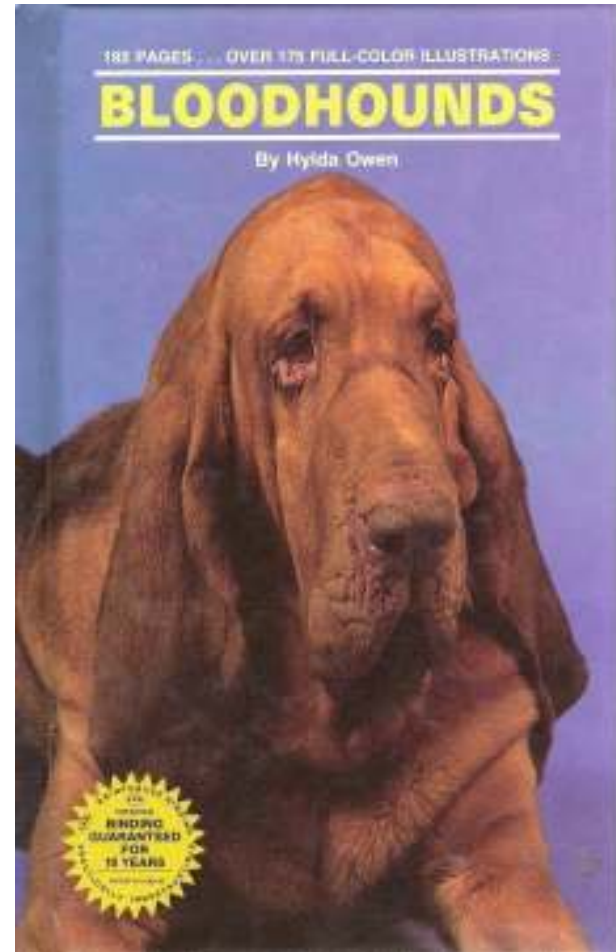
Undesirable



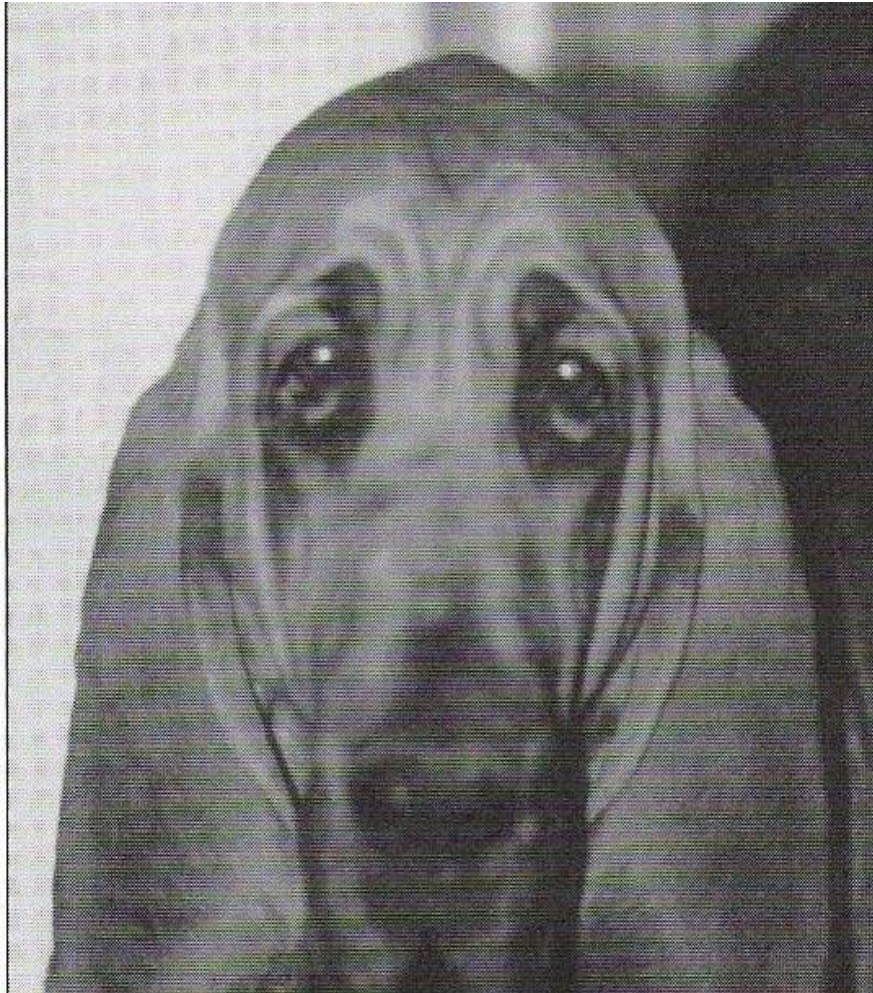


Eyes

- Eyes deeply sunk in the orbits
- Diamond or lozenge shape from weight of flews
- Color varies with coat color
- Too much exposed haw can be unhealthy







✦ Round eyes detract
from breed type





Ears

- Long enough to reach beyond tip of nose
- Set low
- Thin and soft
- Fall in graceful folds, with lower part curling inward & backward





Nose



- Big nose with large, open nostrils
- Color varies with coat color

Lips, Flews, Dewlap



- Lip falls squarely from below the nose
- Upper lip ends well below lower edge of mandible (lower jaw)
- Upper & lower lips meet in deep, hanging flews.

Lips, Flews, Dewlap

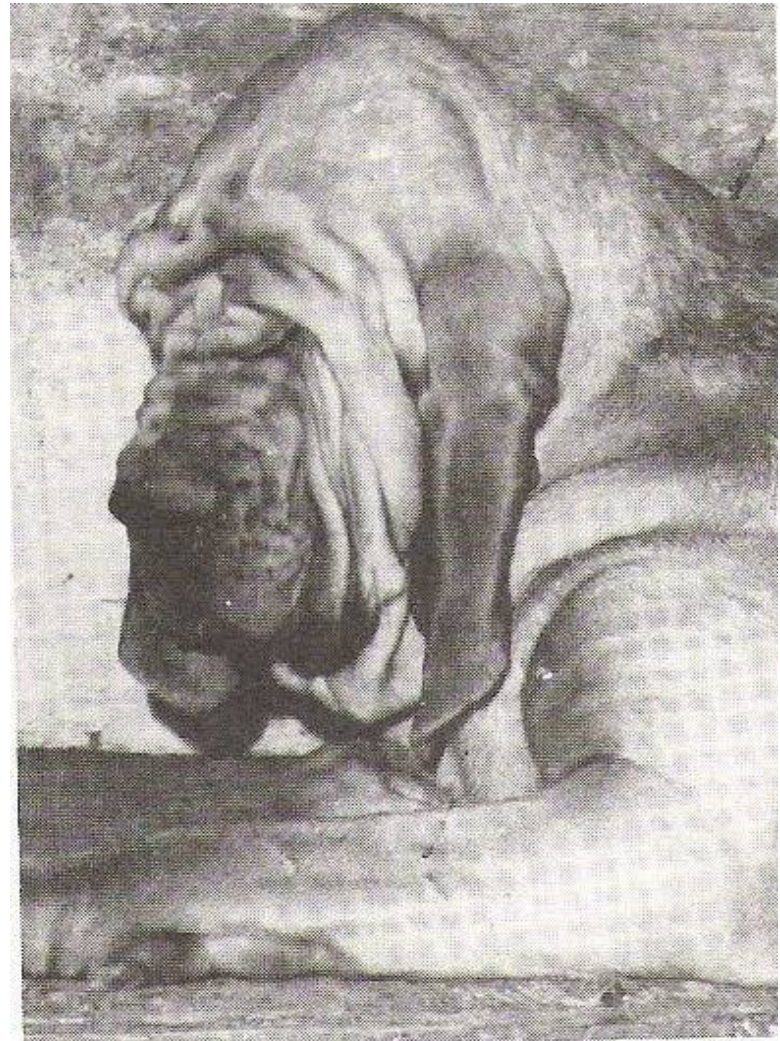
- Flews continue into pendulous folds of the neck skin, the “dewlap”
- Dewlap is very pronounced
- Abundance of skin usually less in the bitch.



Robertson

Wrinkle

- Loose, “superabundant” skin
- Falls into wrinkles and folds when the head is lowered, especially at:
 - forehead
 - sides of face
- Too much wrinkle is not desirable, as it leads to entropion/ectropion.



Bite

- Scissors preferred
- Level accepted
- Ask exhibitor to show bite or expect to get your hands drooled on

Expression

- Noble & dignified
- Solemnity, wisdom & power
- Not harsh



©Holloway

RESERVE

Neck

- Long enough for head to reach the ground
- Loose and ample skin
- Neck set into well-laid back shoulders
 - Wrinkle here does not mean a steep shoulder

Body

- Powerful
- Impression of stamina & substance
- Dogs usually 25-27”
- Bitches usually 23-25”
- Dogs 90-110#
- Bitches 80-100#
- Bigger is not better unless otherwise equal

“Stands over more ground”
NOT square





Maturity

- In general, the bloodhound is slow to mature
- Most lines do not reach physical maturity until around 4 years of age
- Puppies & adolescents usually appear “leggy” but should still be balanced

They go through a lot of changes

Four months



Four years



same dog

Youngsters can be very awkward & disproportional
(these both finished and produced champions)

Dog – 6 months



Bitch – 15 months



Neck



- Long enough for head to reach the ground
- Loose and ample skin
- Neck set into well-laid back shoulders
 - Wrinkle here does not mean a steep shoulder

Topline & Underline

- Firm & level
- Slight rise over loin felt rather than seen
- Tail set on rather high





- Loin is deep
 - Minimal tuck-up in mature dog or bitch
- False pregnancy very common in bitches
 - Not to be faulted!



Breed Outline

Rectangular. Level topline. Balanced strength in front and rear.



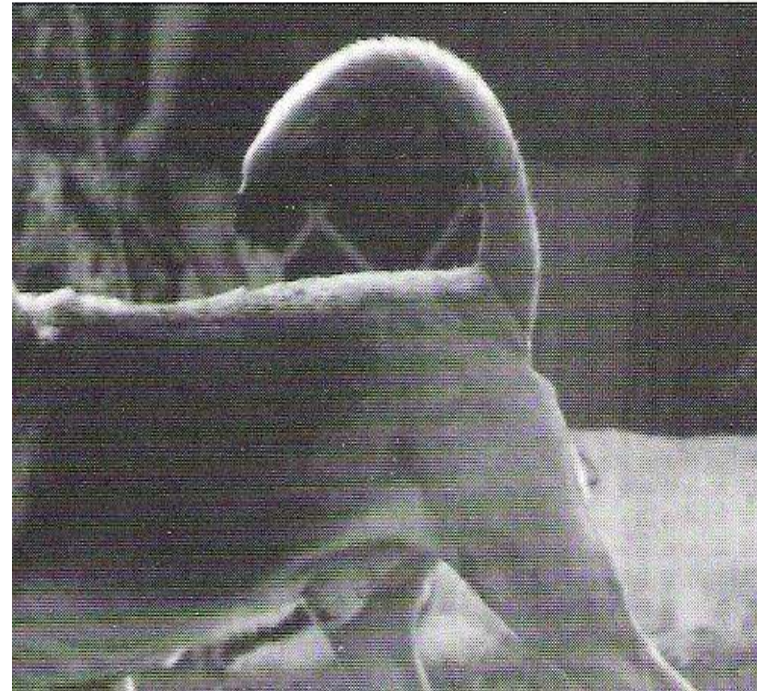
- Do not reward an excessively sloping topline
- Too much angle & too long a second thigh here
- This causes fatigue after a few miles
- The bloodhound should NOT resemble a sporting or herding breed

Tail (Stern)

- Long & tapering
- Sabre or scimitar shape
- Set relatively high but not off top of back
- Carried up – but not too far over the back
- Lower tail carriage may reflect insecurity



Undesirable tail carriage



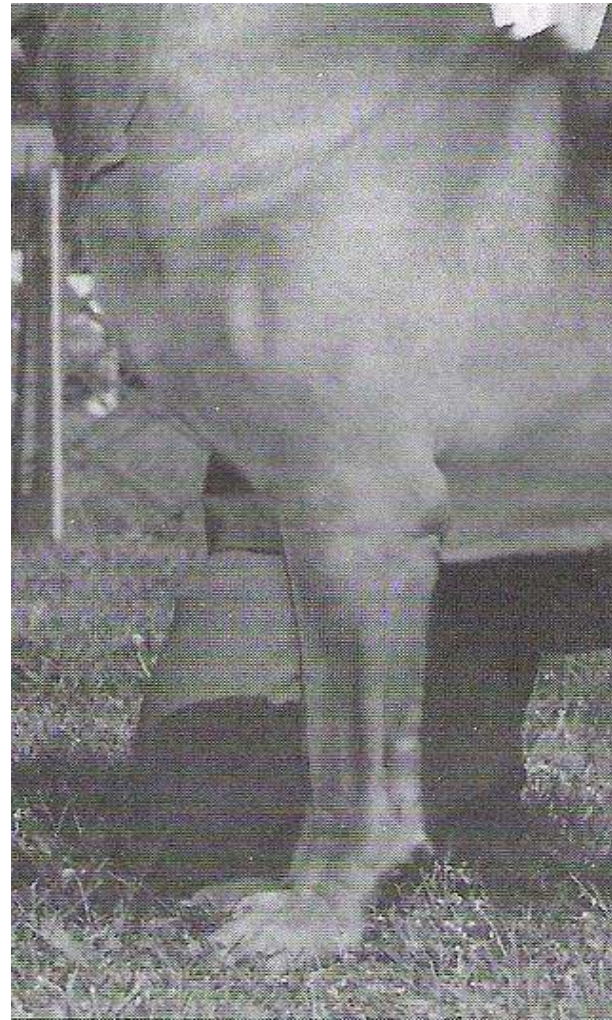
Shoulders

- Must be well-angulated for endurance
- Not set too far forward on the body
- 3-4 finger separation between tips of shoulder blades, for flexibility of neck & to not interfere when crouching down



Chest

- Well let down
 - Actual chest (not just skin) down at least to the elbow in mature bloodhound
- Noticeable forechest
- Long keel
- Maximum lung capacity without bulkiness



Front



- Elbow under withers
- Slight slope to pastern
- Straight down from elbows when viewed from the front
- Well-constructed front very important to endurance on the trail



- Straight down from elbows when viewed from the front

Rear

- Strong thigh and second thigh
- Well-let down hock
- Straight when viewed from the rear
- Angulation balanced with that of front end





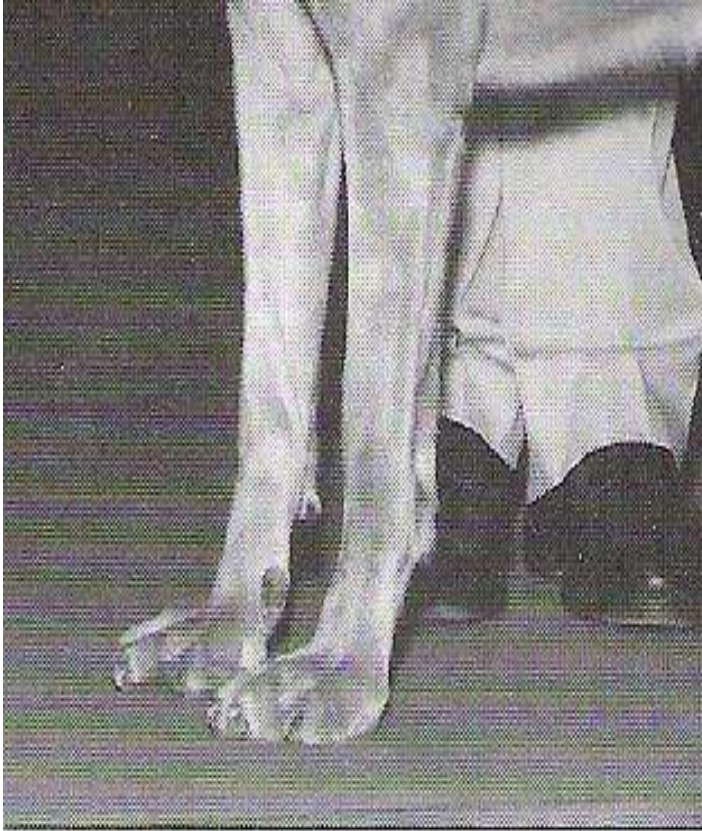


Feet



- Relatively short toes
- Well-knuckled up
- Thick pads
- Very important for shock absorption
- Not to be penalized for presence or absence of front dewclaws

Undesirably flat feet



Movement

- Elastic, swinging & free
- Good reach & drive without racing
- Balance of front & rear very important to endurance
- Topline should remain level while moving
- Tendency to singletrack (converge toward the midline)

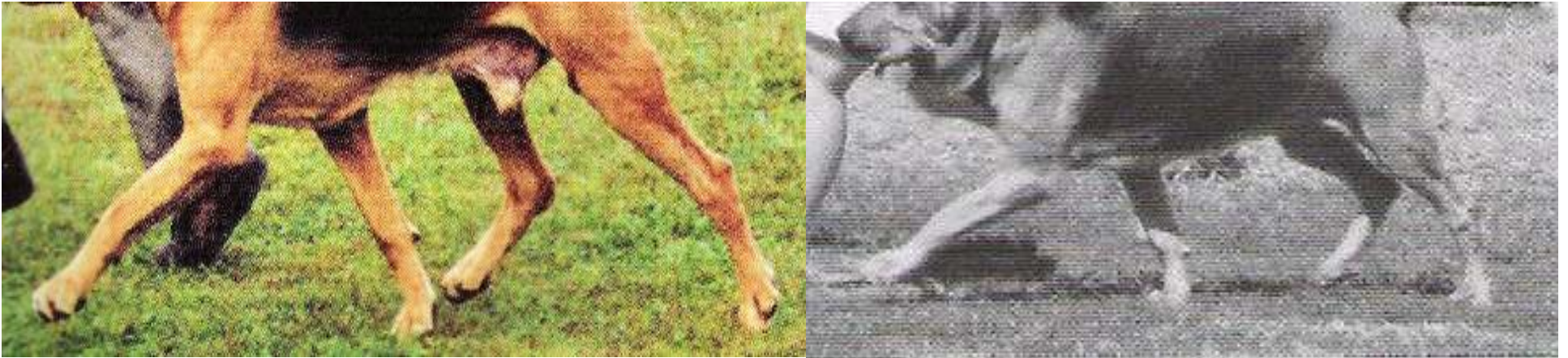
Movement







Unbalanced



Color

- Black & tan
- Liver & tan
- Red

- Darker nose leather & eye rims in B&T
- Darker eye color in B&T

- Blanketing varies from none to full
- Colors considered equal

Color

- “Badgering” often evident in darker blankets
 - Not age-related
- Small amount of white permissible on chest, feet, tip of stern



Veteran bitch – after two big litters

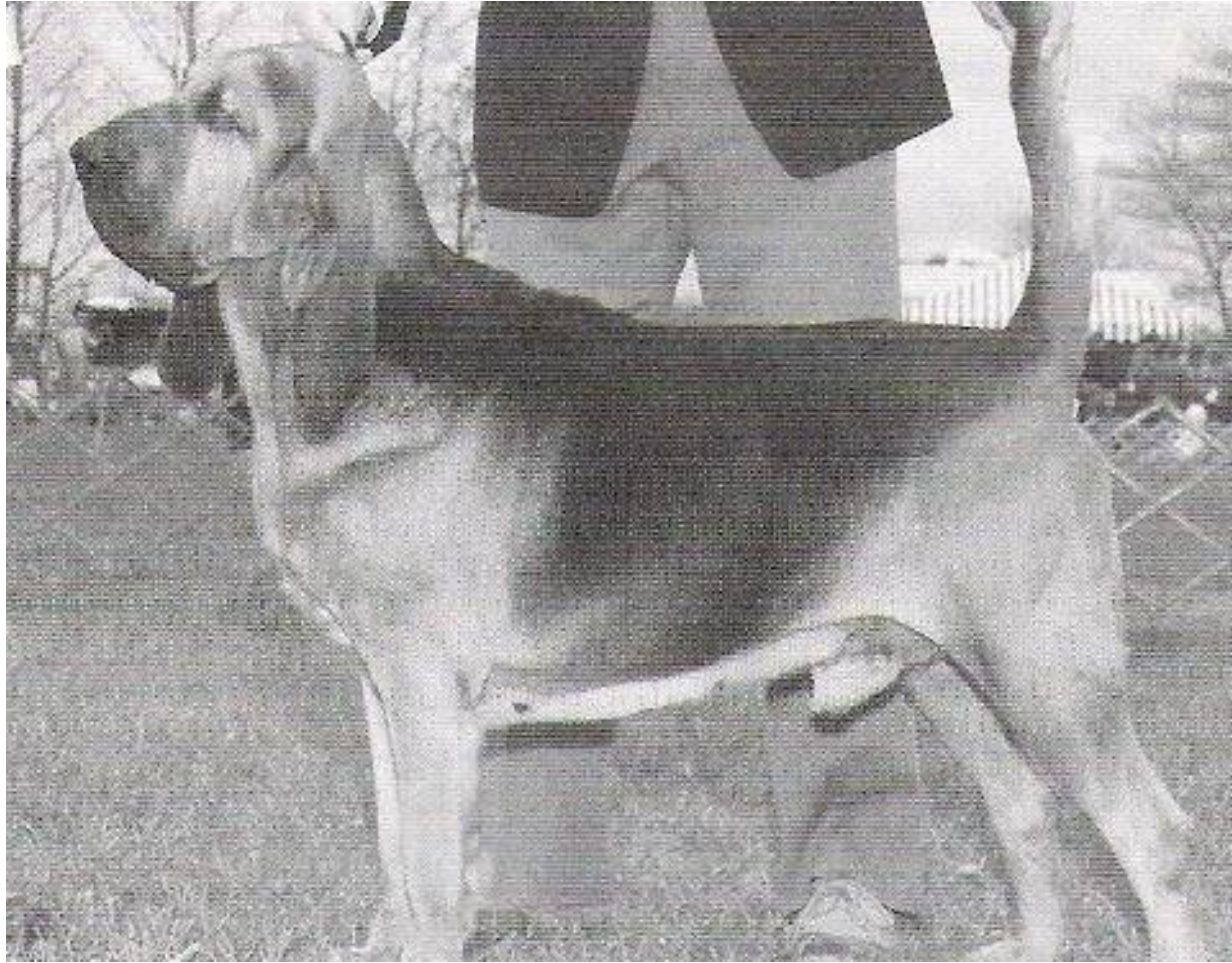
Color







CH Black Tommy of Huguenot



CH Sandlapper's I Got Even



CH Fancy Bombardier



CH Dominator O' Craigel Telmetrue



CH The Rectory's Bishop



CH (Eng) Chasedown Virtuous



CH (Eng) Cammonstone Sonnet



CH The Rectory's Reward



CH Augustus of Kamilot



CH Baskerville's Sole Heir



CH Viking's Thor



CH Roclin's Image of Pine Hollow



CH Quiet Creek's Windfall

CH Quiet Creek's Stand By Me

(Remember the Bloodhound in
the movie "Best in Show"?
This was him.)





CH Badger Creek Druid



CH Heather's Nimrod
Stew Unplugged



CH Quiet Creek's Double or Nothing for Heather



CH. Legacy's Totally Radical



CH Quiet Creek's Cinco De Mayo



CH Heather's Knock on Wood

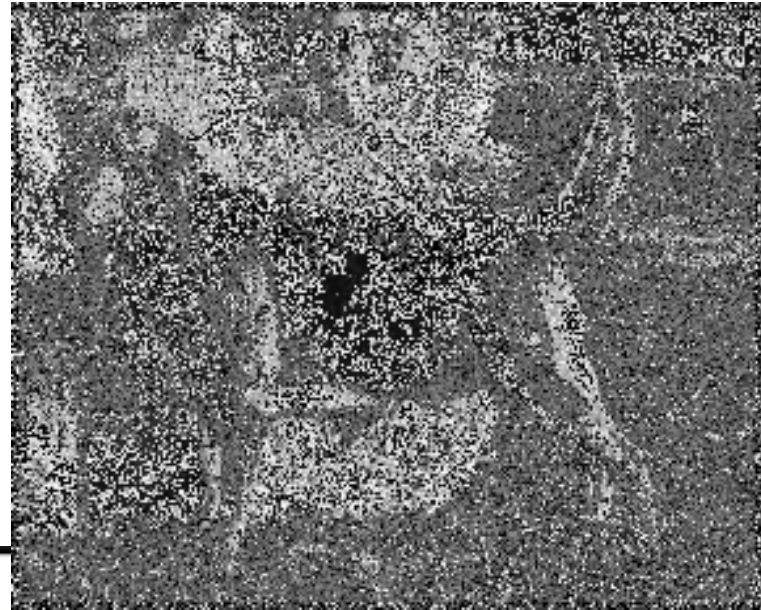


CH Heather's Knock on Wood
(Same dog at maturity)

Three National Specialty winners – dogs



Three National Specialty winners – bitches



National Specialty BOS – six times





Please don't forget what this breed is all about