



THE CAIRN TERRIER



Presented
by the
Cairn Terrier Club of
America

Seminar Objectives

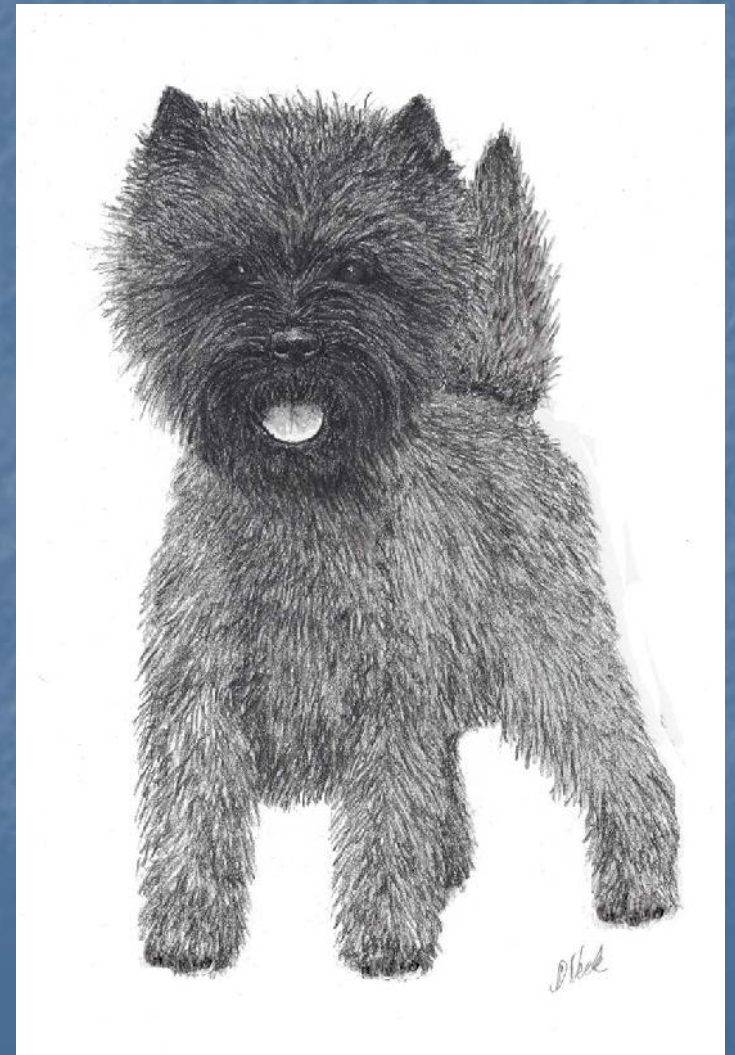


In accordance with the 1938 breed standard:

- Understand the original purpose of the Cairn Terrier and the importance of maintaining the breed's functional characteristics.
- Develop a mental image of correct "type" in the Cairn Terrier.

History of the Cairn Terrier

- Native to Scotland, the Cairn Terrier remains the closest in type to the old working terrier of Skye and the West Highlands.
- The breed was recognized by the AKC in 1913.
- Interbred until 1917 with what is today the West Highland White Terrier.
- Current standard written and adopted in 1938.



What is Origin of the Name Cairn?



Cairns are heaps of stones piled up as a memorial or landmark. Vermin infested these piles of rocks and Cairns with their natural ability to navigate rocky terrain were used to rout them out.

Thus, the name!

Early Champions



Ch Firing Frolic - 1913



Ch Splinters Of Twobees - 1933



Ch Gillie Of Hyver - 1923



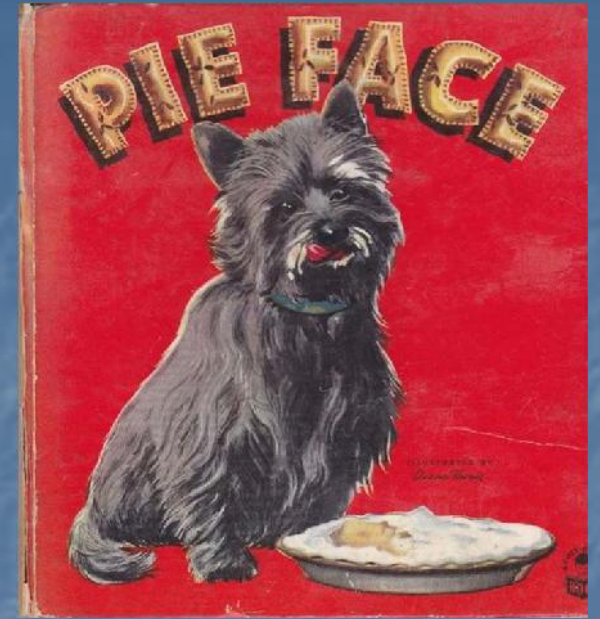
1926 AKC Gazette



1930s—Duke and Duchess of Windsor with their Cairns



Cairns in Media



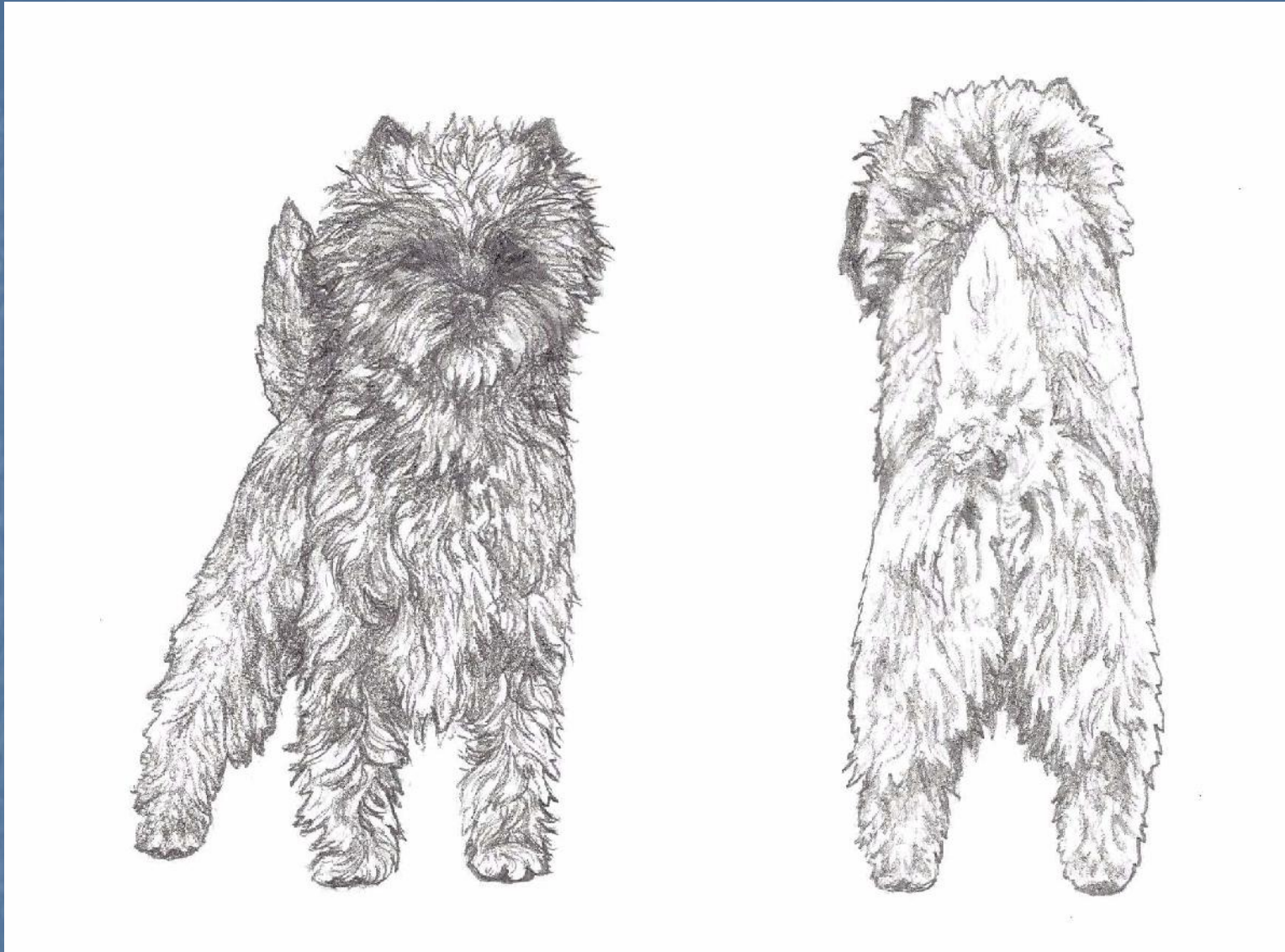
LIFE

The Standard: General Appearance

- *Active, game, hardy, small working terrier of the short legged class.*
- *Free in movement.*
- *Strongly but not heavily built.*
- *Standing well forward on forelegs.*
- *Deep in ribs.*
- *Well coupled with strong hindquarters.*
- *Well-proportioned build with medium length of back.*
- *Hard weather-resistant coat.*
- *Head shorter and wider than other terriers and well furnished with hair, giving a foxy appearance.*



General Appearance: Front and Rear Views



Although classified as a short legged terrier, a Cairn should have medium length of leg. Most important is the word “Medium” in describing a Cairn. Cairns should be moderate in every way, without exaggeration.

Function of *Short Legged Terriers*

Terriers of the short legged class were bred to follow the quarry under ground. Their job was to worry the fox or badger until it bolted into the open.

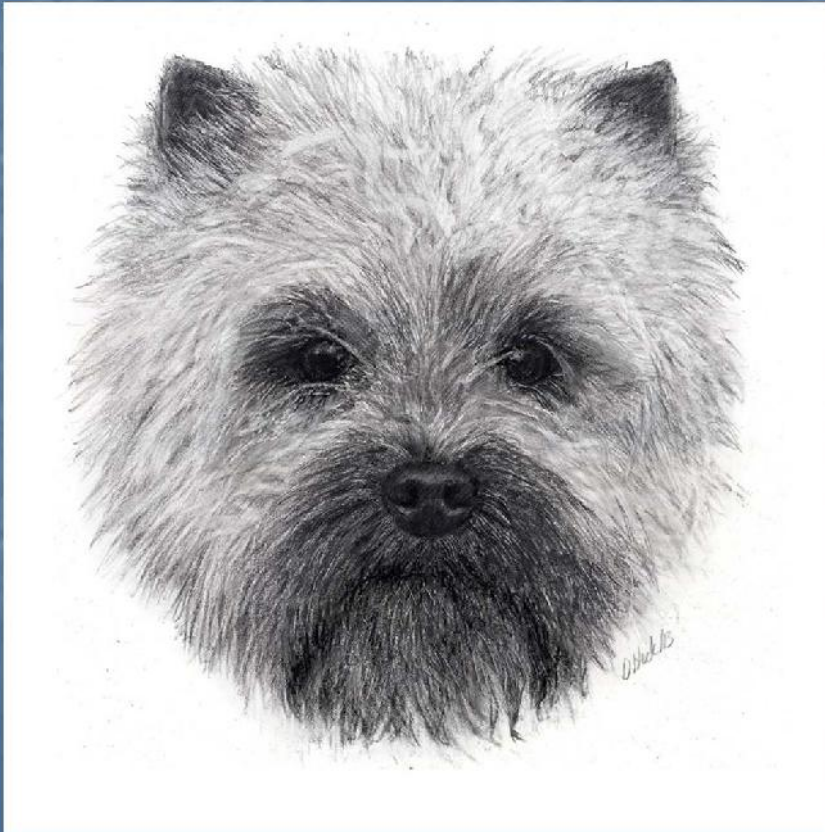
Terriers of the medium legged class, were bred to not only go to ground, but to chase the fox and keep up with the horses on a hunt.

Terriers of the long legged class were bred as all round farm and hunting dogs. They were used to guard the livestock, hunt vermin, and keep out intruders.

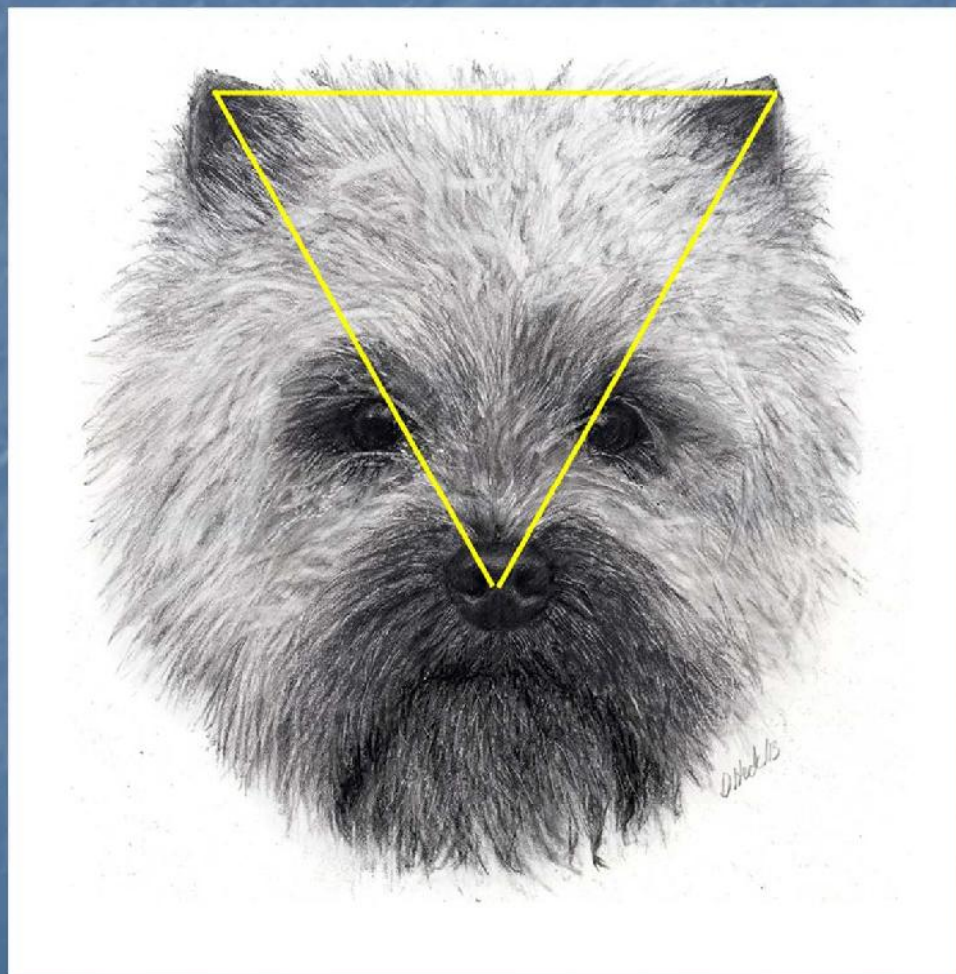


Head: Skull

- *Broad in proportion to length with a decided stop.*
- *Well furnished with hair on the top of the head, which may be somewhat softer than the body coat.*
- *Fault: Skull--too narrow in skull*

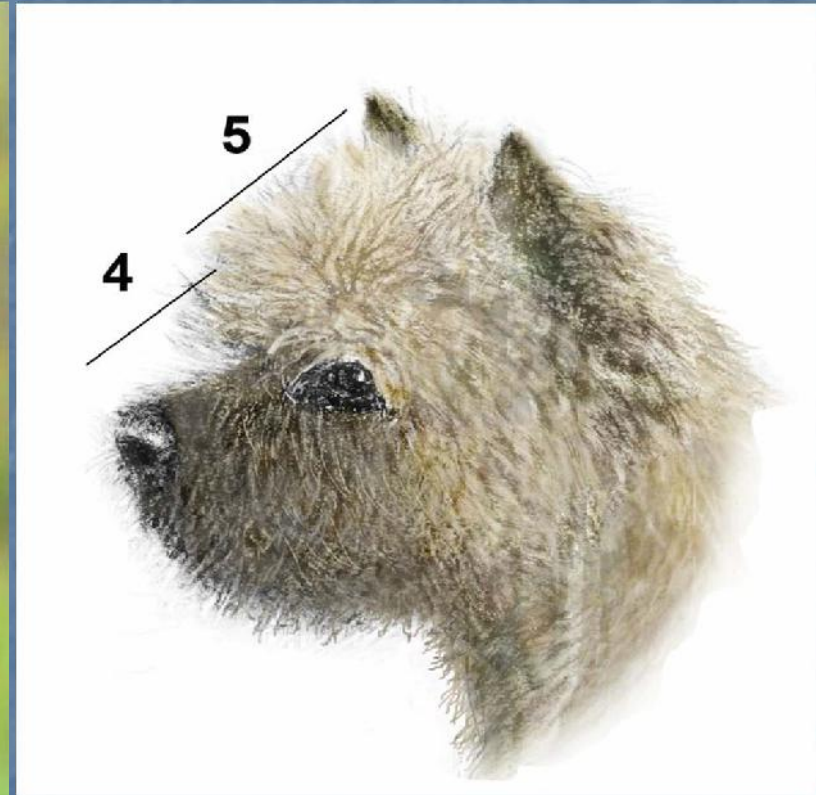


To determine if eye and ear placement is correct, imagine an equilateral triangle from the tip of the nose to the tips of the ears. The lines should pass through the center of each eye.



Muzzle

- *Strong but not too long or heavy.*



- *Fault: Muzzle--too long and heavy a foreface*

Teeth

- *Large teeth.*
- *Mouth neither overshot nor undershot.*
- *Scissor or level bite*
- *Fault: Mouth--Overshot or undershot*



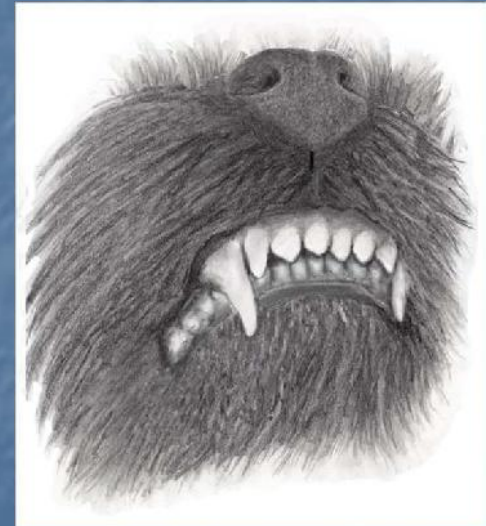
Scissors



Level



Undershot



Overshot

Nose

- *Nose – black* (only solid black is acceptable).
- *Fault: Nose--flesh or light colored nose*



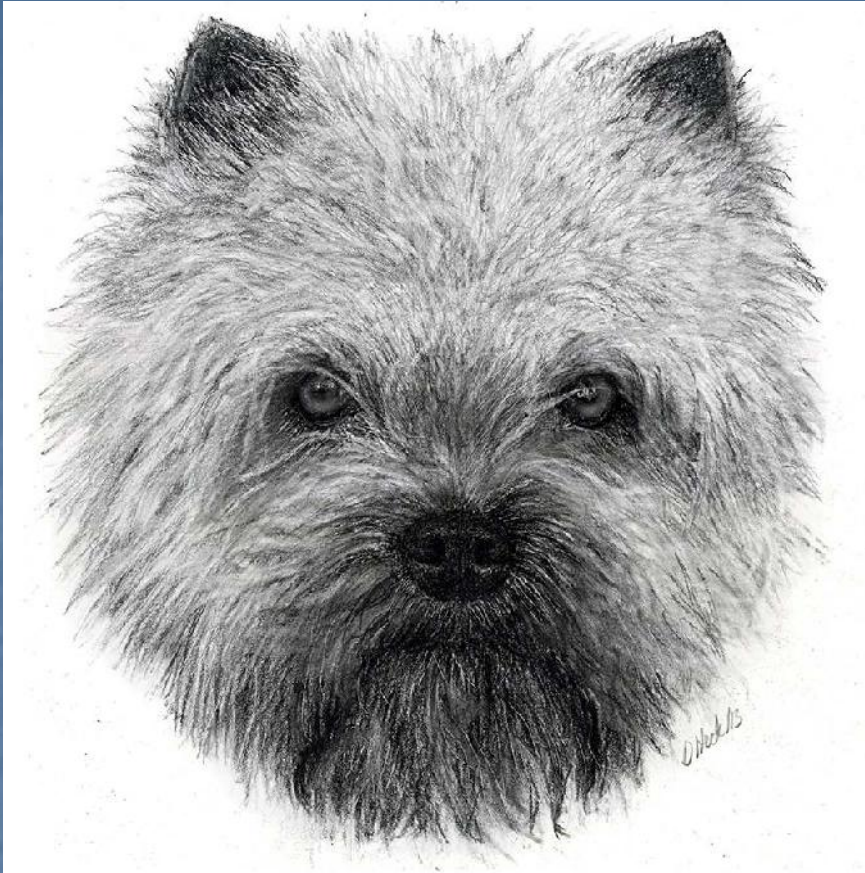
Eyes

- *Set wide apart, rather sunken, with shaggy eyebrows.*
- *Medium in size.*
- *Hazel or dark hazel in color, depending on body color.*
- *Keen terrier expression.*

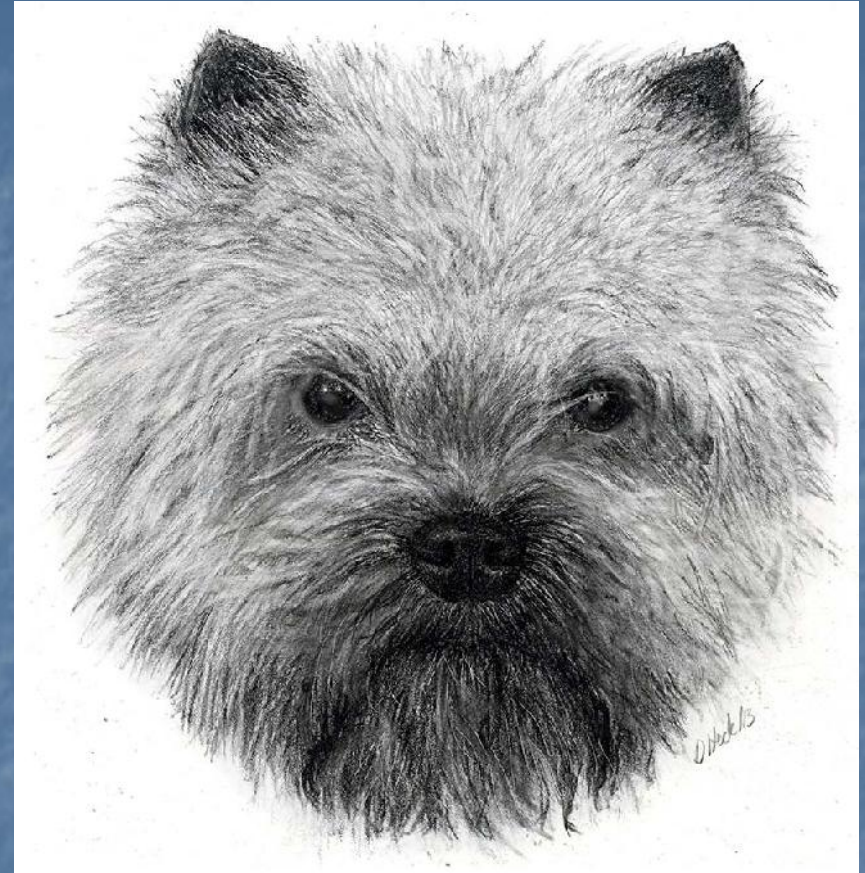
Oval in shape.



Correct Eyes

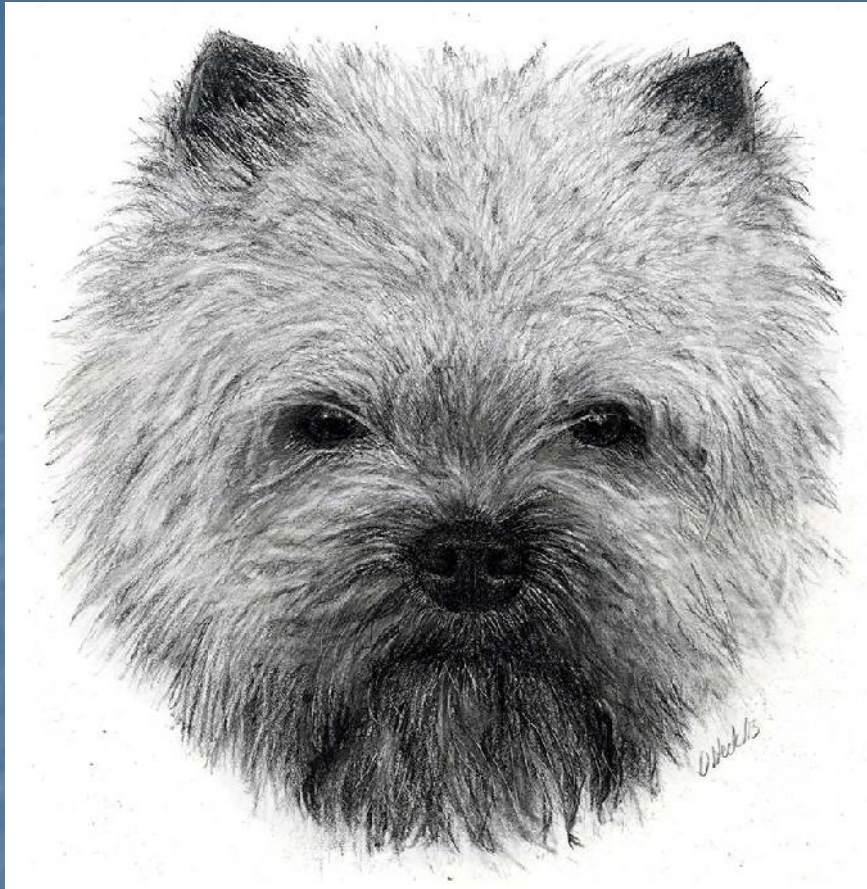


Eyes too Light

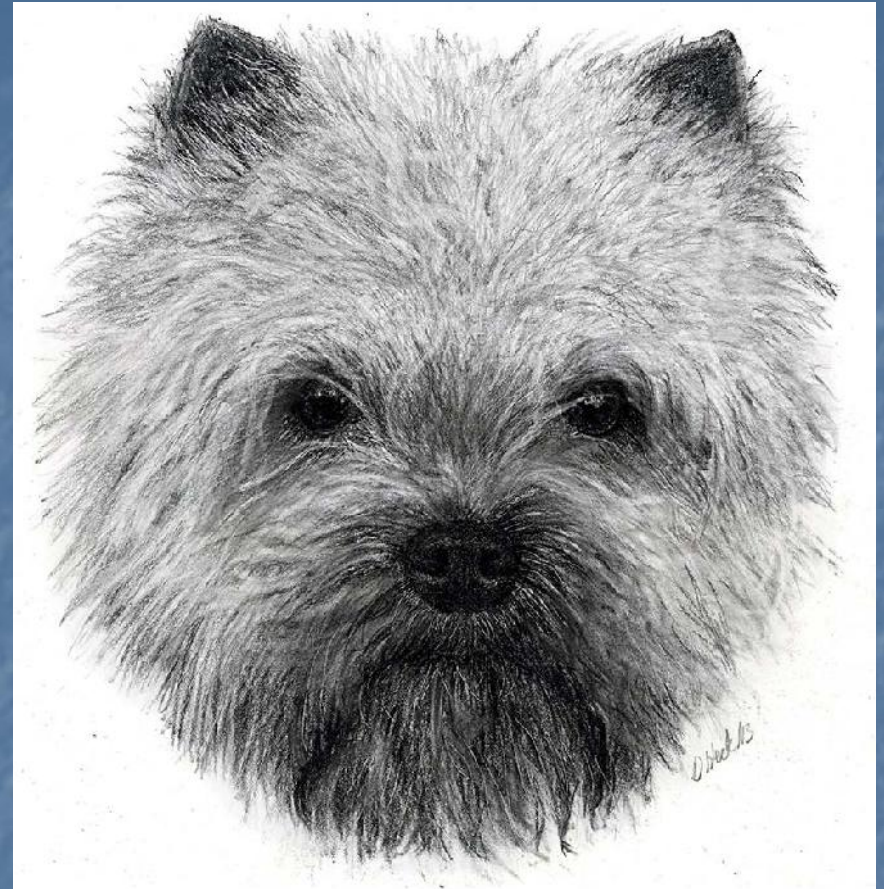


Eyes too Prominent

- *Fault: Eyes--too large, prominent, yellow, and ringed are all objectionable*



Eyes too Small

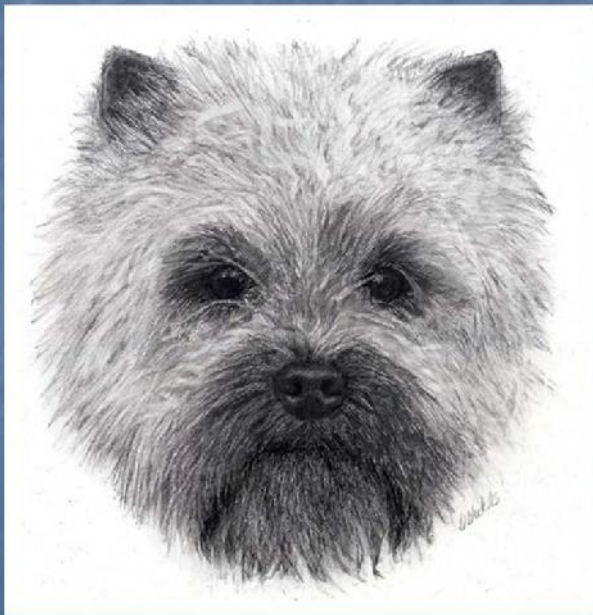


Eyes too Big

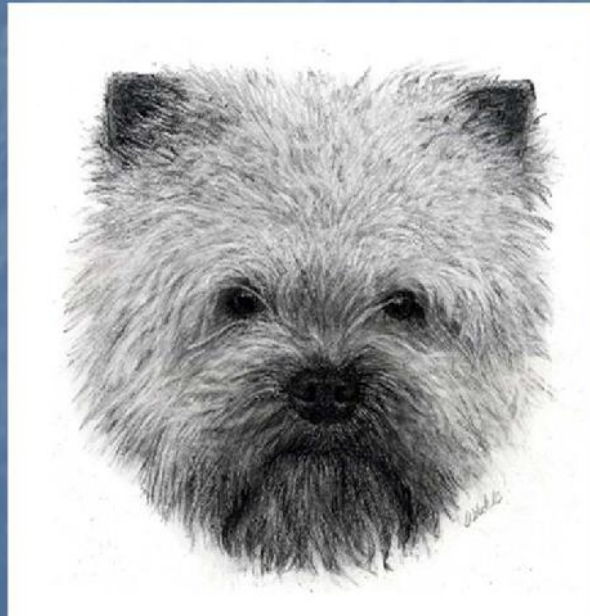
- *Fault: Eyes--too large, prominent, yellow, and ringed are all objectionable*

Ears

- *Small, pointed, well carried erectly.*
- *Set wide apart on the side of the head.*
- *Free from long hairs.*
- *Fault: Ears--too large, round at points, set too close together, set too high on the head; heavily covered with hair*



Correct



Too wide, too low



Too close



Good Head Studies





Not-so-Good Head Studies



A



B



C



D

A- Eyes too large and round.

B- Narrow head, ears too large and close together.

C- Scottie-type head.

D- Eye is too light.

Body

- *Well-muscled, strong, active body.*
- *A level back of medium length.*
- *Giving an impression of strength and activity without heaviness.*
- *Fault: Body--too short back and compact a body, hampering quickness of movement and turning ability. Too long, weedy and snaky a body, giving an impression of weakness. Back not level.*



Ribs and Front Assembly



**ACCEPTABLE RIB
AND FRONT LEG**



**ACCEPTABLE RIB
AND FRONT LEG**

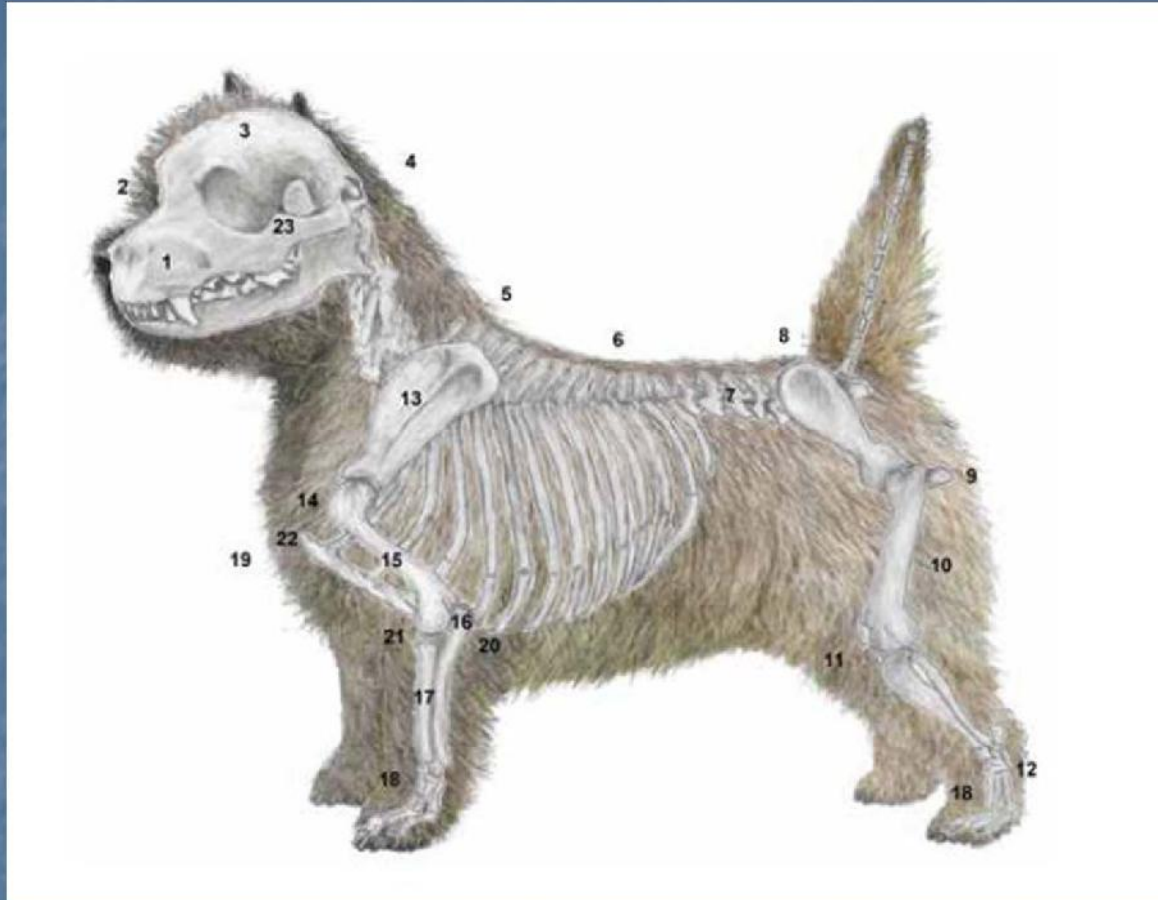


**SLAB SIDED
NARROW FRONT**



**BARREL RIB
ROUND/WIDE FRONT**

What's Underneath the Coat?

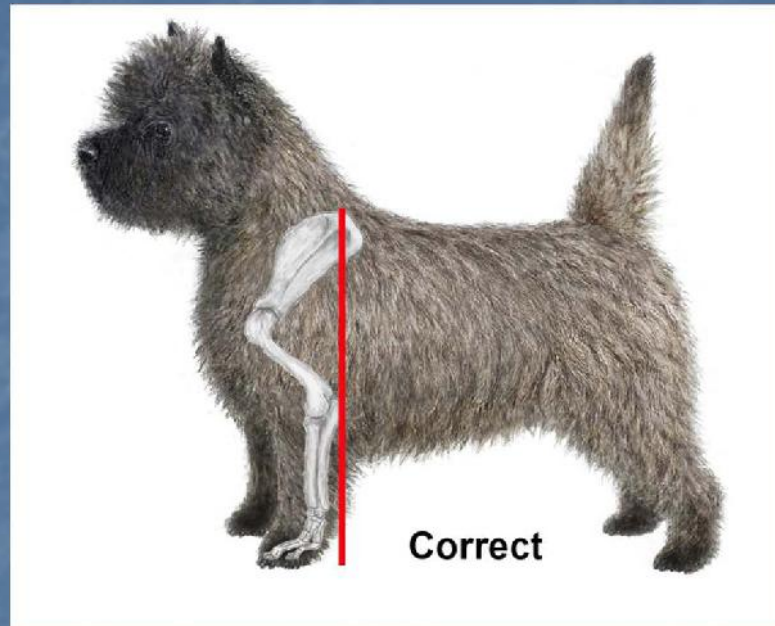


A Cairn should have medium bone and good substance. The ribs extend well back on the body and they should be joined to a strong loin and connected to well-muscled hindquarter. The breastbone should be clearly discernible.

Shoulders, Legs, and Feet

- *A sloping shoulder, medium length of leg, good but not too heavy bone.*
- *Forelegs should not be out at elbows, and be perfectly straight, but forefeet may be slightly turned out.*
- *Forefeet larger than hind feet.*
- *Legs must be covered with hard hair.*
- *Pads should be thick and strong and dog should stand well up on its feet.*
- *Fault: Legs and Feet--too light or too heavy bone. Crooked forelegs, or out at elbow. Thin ferrety feet; feet let down on the heel or too open and spread. Too high or too low on the leg.*

Shoulders



“A Cairn Stands Well Forward on its Forelegs”



Feet



Correct

Thin, flat

Pads should be thick and strong and dog should stand well up on its feet.

Forefeet may be slightly turned out.



Rear and Hocks



Correct



Rear over angulated



Rear too straight



Hock too long



Hock too short



Sickle hock

Tail



Correct at 12
to 2 o'clock

- *Tail in proportion to head.*
- *Well furnished with hair but not feathery.*
- *Carried gaily but must not curl over back.*
- *Set on at back level.*
- ***Fault: Tail set on too low***



Too forward



Banana tail

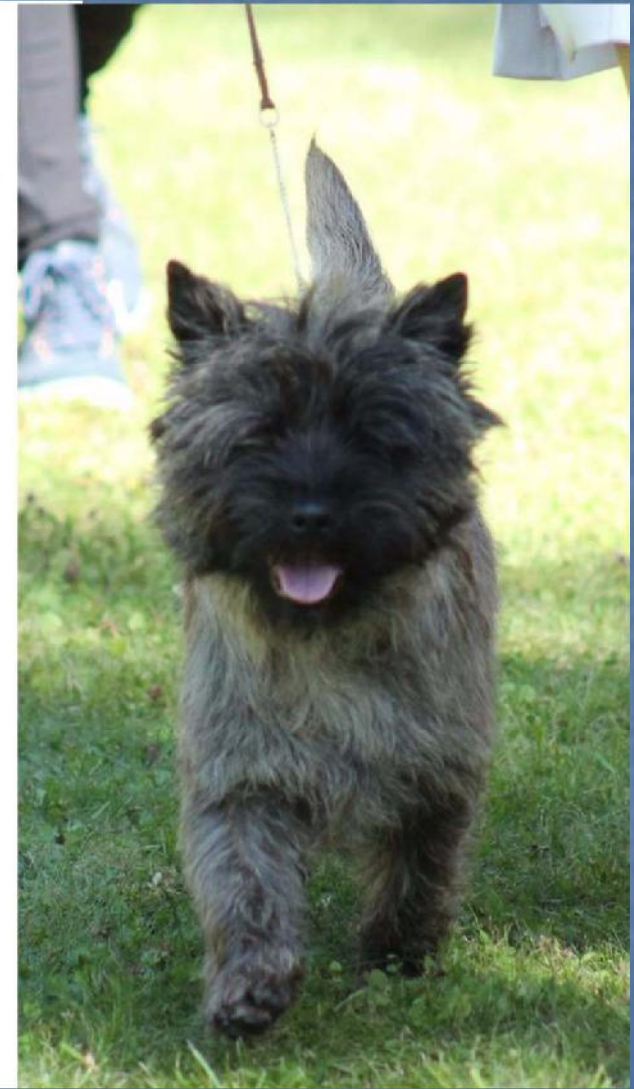
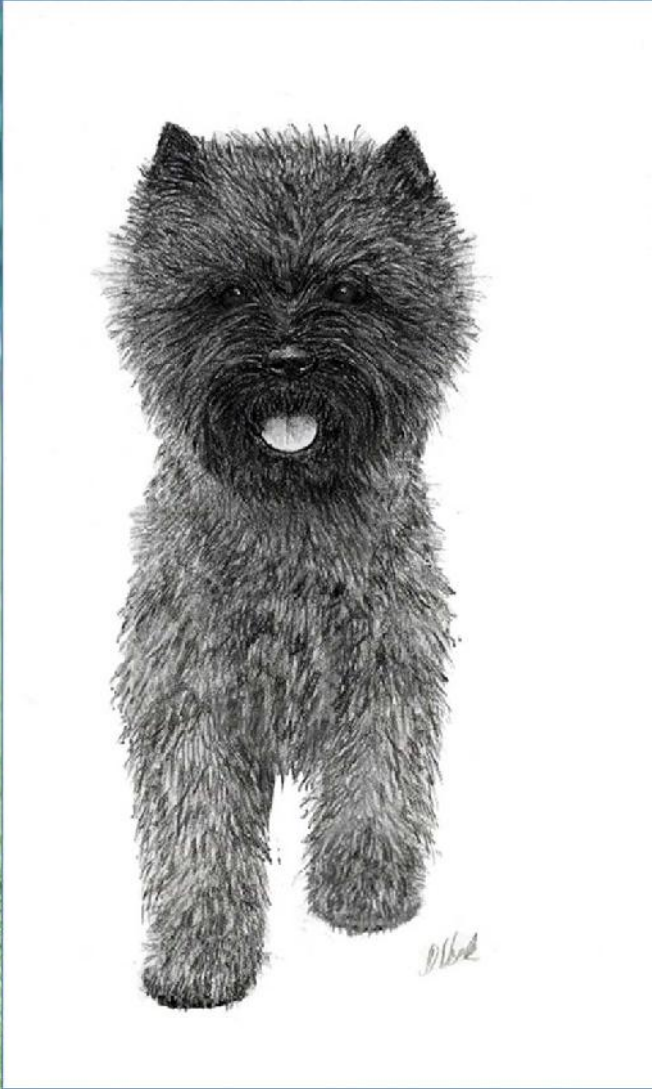


Skinny or
stove-pipe tail

Correct Side Movement



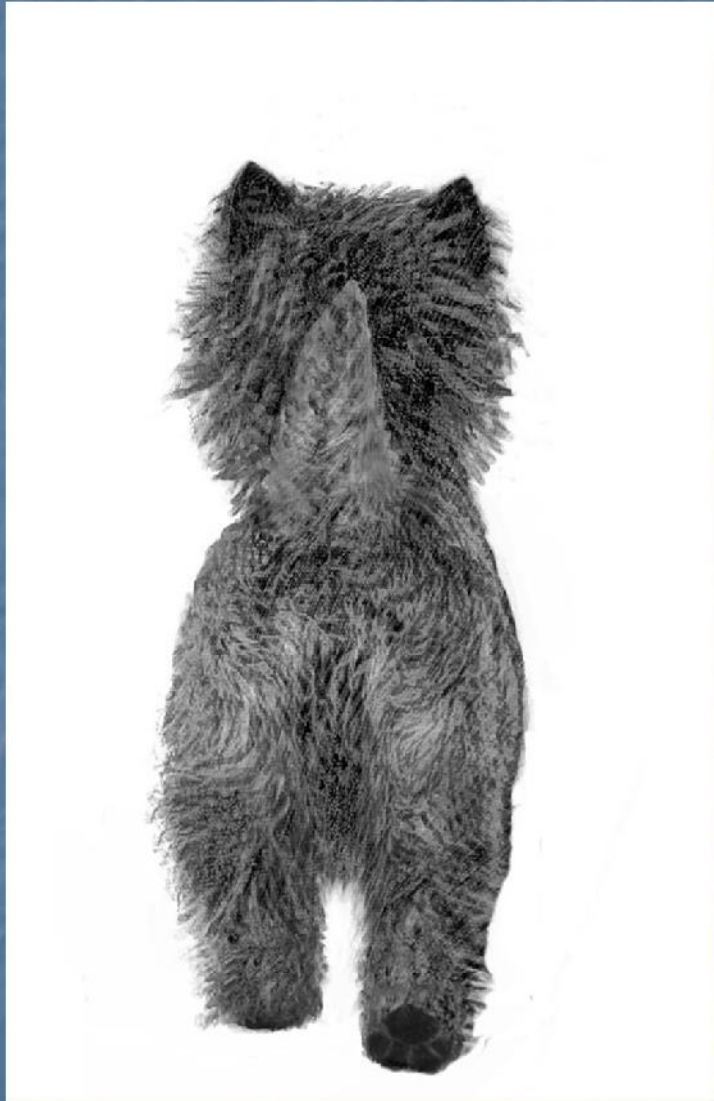
Correct Front Movement



Front Movement: Reach

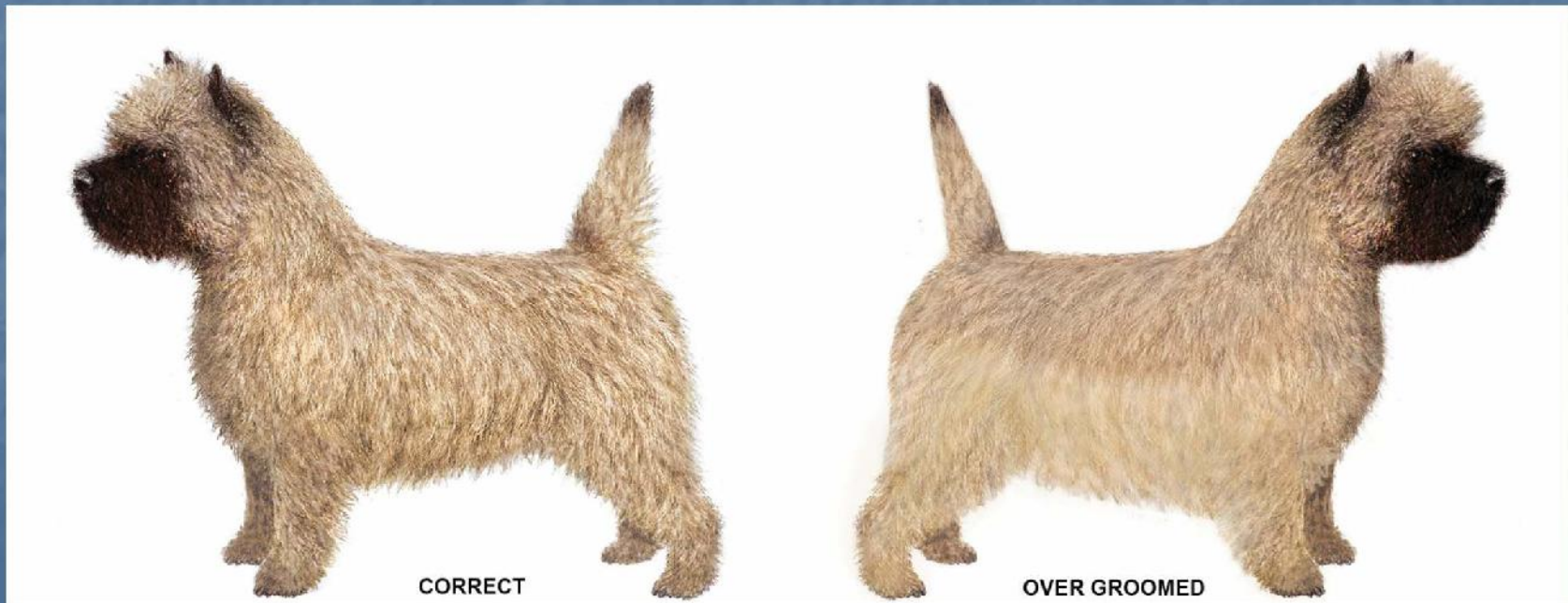


Correct Rear Movement



Coat

- *Hard and weather resistant.*
- *Must be double-coated with profuse harsh outer coat and short, soft, close furry undercoat.*
- *Fault: Open coats, blousy coats, too short or dead coats, lack of sufficient undercoat, lack of head furnishings, lack of hard hair on the legs. Silkiness or curliness. A slight wave permissible.*



Color

- *May be of any color except white.*
- *Dark ears, muzzle and tail tip are desirable.*
- *Fault: White on chest, feet or other parts of the body*



Various Colors of the Cairn



Ideal Size

- *Involves the weight, the height at the withers and the length of body.*
- *Weight for bitches, 13 pounds; for dogs, 14 pounds.*
- *Height at the withers, bitches, 9 ½ inches; dogs, 10 inches.*
- *Length of body from 14 ½ to 15 inches from the front of the chest to back of hindquarters.*



Ideal dog



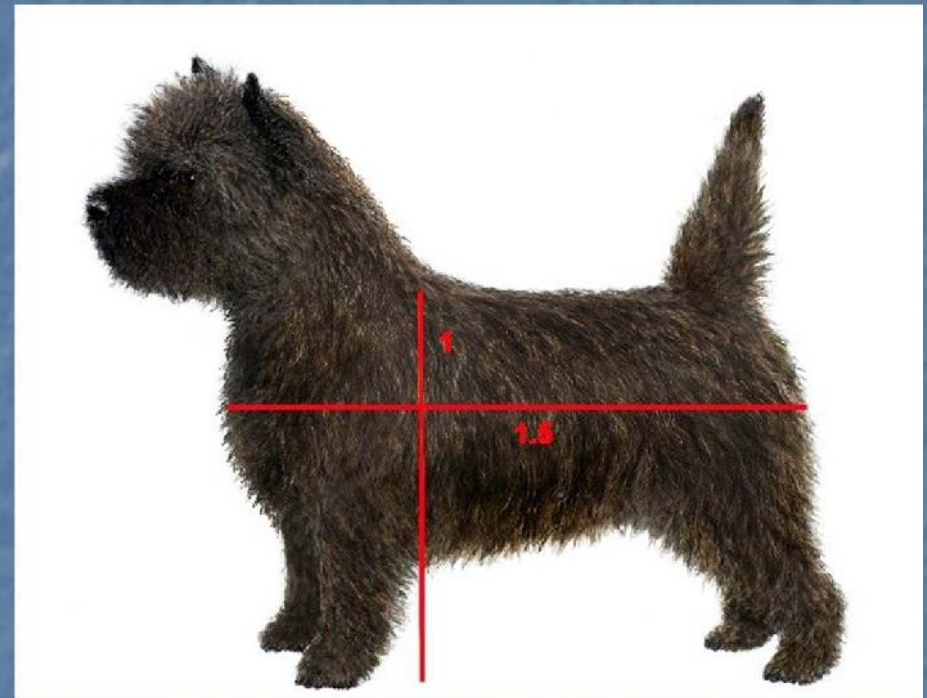
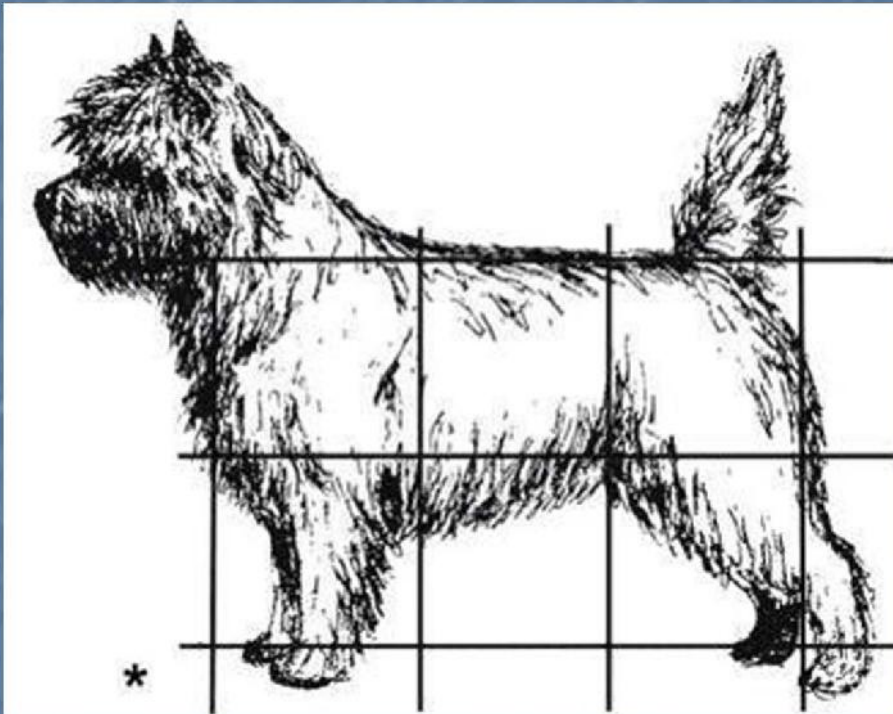
Ideal bitch

Ideal Proportion

- *The dog must be of balanced proportions and appear neither leggy nor too low to ground; and neither too short nor too long in body.*
- *Weight and measurements are for mature dogs at two years of age. Older dogs may weigh slightly in excess and growing dogs may be under these weights and measurements.*

The Cairn is not square. His body length is 1 and 1/2 times his height. When a Cairn Terrier appears square, or close to square, he is in direct contradiction to the Standard, regardless of his height.

“Must be of Balanced Proportions and Appear Neither too Short nor too Long in Body”



The Cairn's Correct Body Length is 1 and ½ times his height

Ideal Proportion versus Variations



Correct



**Unbalanced
Leg too long**



Back too long



Back too short

Condition

- *Dogs should be shown in good hard flesh, well-muscled and neither too fat or thin.*



Condition

- *Should be in full good coat with plenty of head furnishings, be clean, combed, brushed and tidied up on ears, tail, feet and general outline.*
- *Should stand up on their toes and show with marked terrier characteristics.*



Showing the Cairn Terrier



- *Should move freely and easily on a loose lead.*



- *Should not cringe on being handled and should stand up on their toes and show marked terrier characteristics.*



Sparring

Self confident and alert, Cairns look their best when properly sparrred under the watchful eye and close control of experienced handlers

Judges are encouraged to request that dogs be allowed to interact with each other



Review of Essential Points

- Working terrier of short legged class
- Skull: Broad in proportion to length
- Muzzle: Strong but not too long or heavy
- Scissors or level bite
- Double coated with profuse hard outer coat and soft undercoat
- Body is 50% longer than height at withers

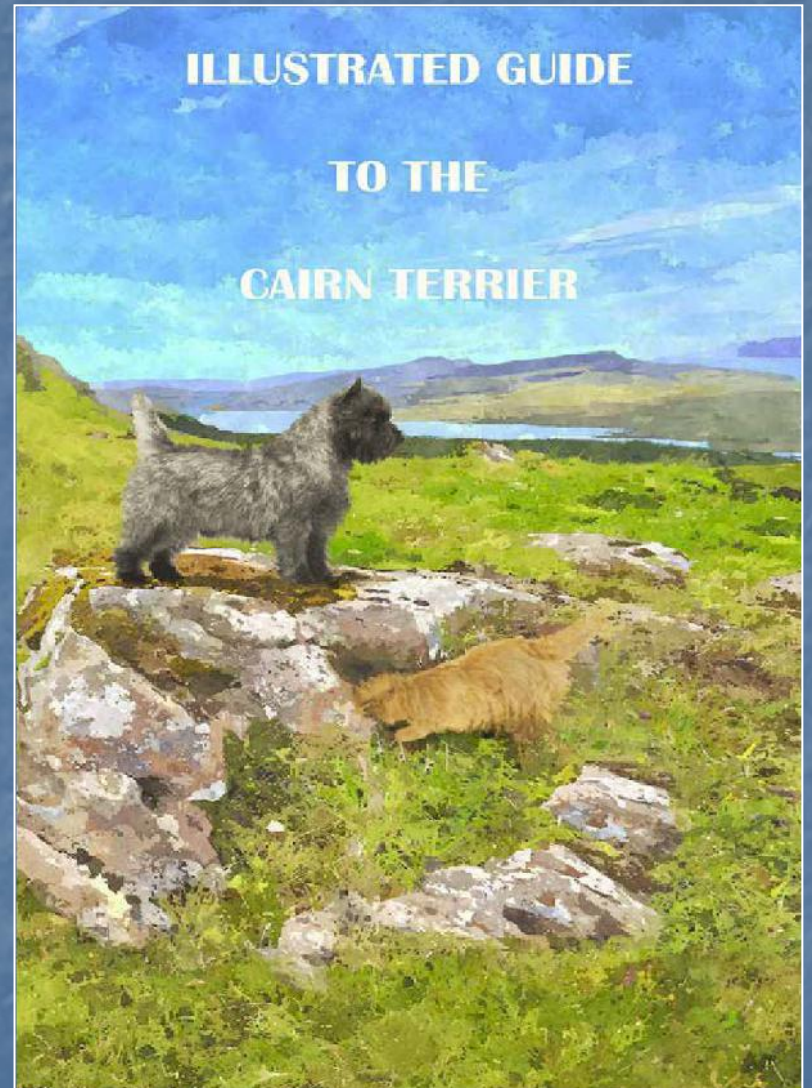
Review of Essential Points

- Topline level with tail held at 12:00 to 2:00 position
- Legs straight but front feet may turn out slightly
- Should show with marked Terrier attitude
- Shown on a loose lead
- Always Medium; not exaggerated, fancy, or extreme
- ***No Disqualifications***



For More information on the Cairn Terrier

- 2016 Illustrated Guide to the Cairn Terrier is available for purchase for \$13.50 from the CTCA website at:
<http://cairnterrier.org/index.php/Publications>
- CTCA Mentor List can be found at:
<http://www.akc.org/events/judges/guides/>



No portion of this presentation may be copied, edited, changed or presented, without the expressed, written permission of the CTCA.