

DACHSHUND BREED STANDARD



DACHSHUND BREED STANDARD

- **28 lines are devoted to describing the front;**
- **22 lines are dedicated to outlining the ideal configuration of the rear;**
- **19 lines are used to indicate the properties of the head.**

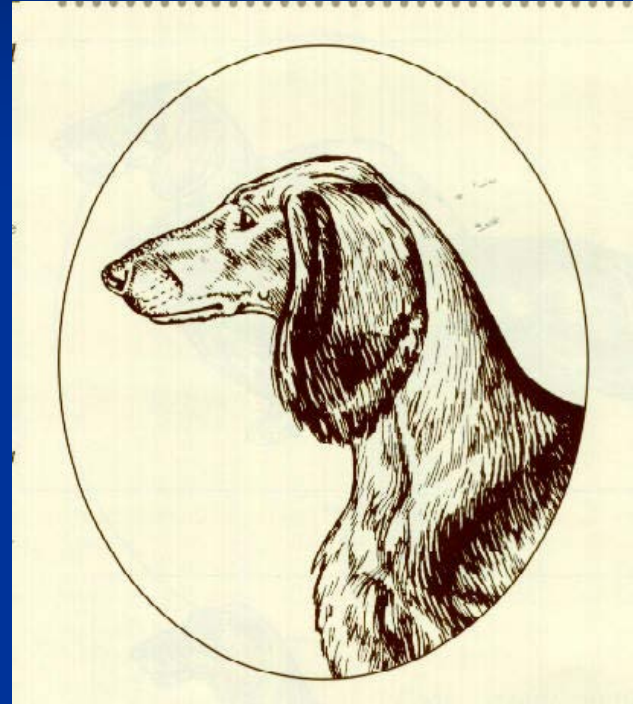
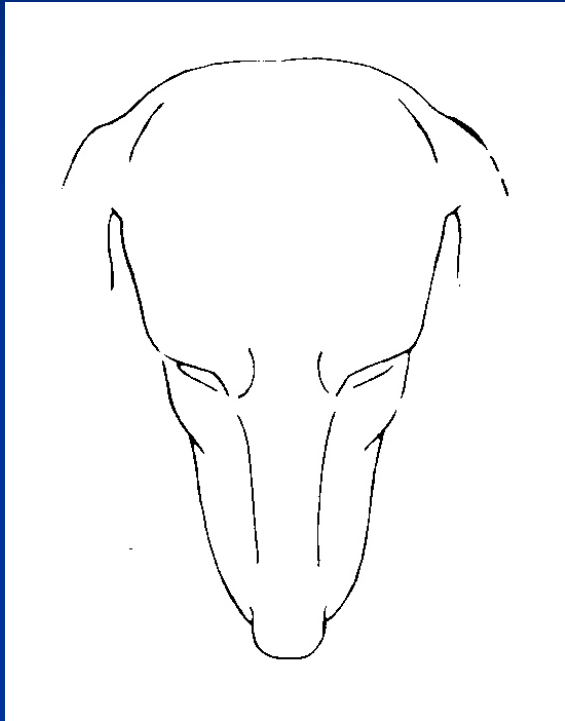
PRIORITIES:

FRONTS

REARS

HEADS

HEAD and NECK







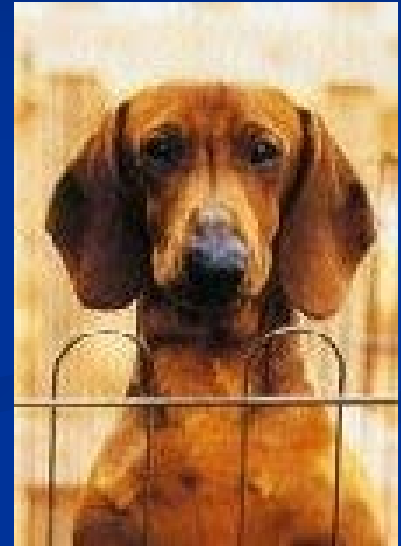
CORRECT EAR SET



LOW EARSET



CORRECT EAR SET





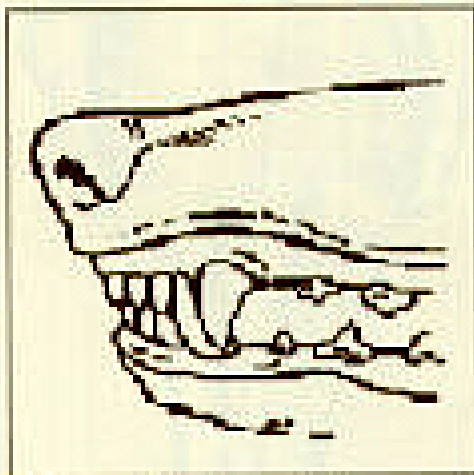
“The skull is slightly arched, neither too broad nor too narrow, and slopes gradually with little perceptible stop into the finely formed, slightly arched muzzle, giving a Roman appearance.”



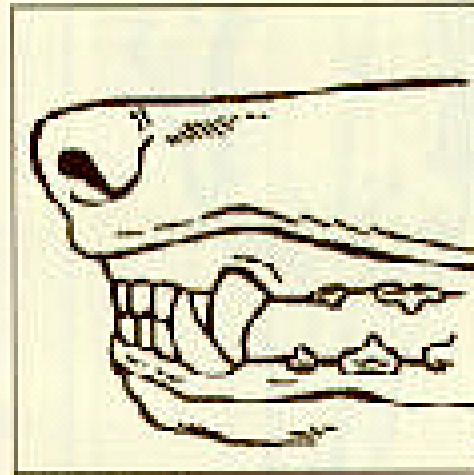








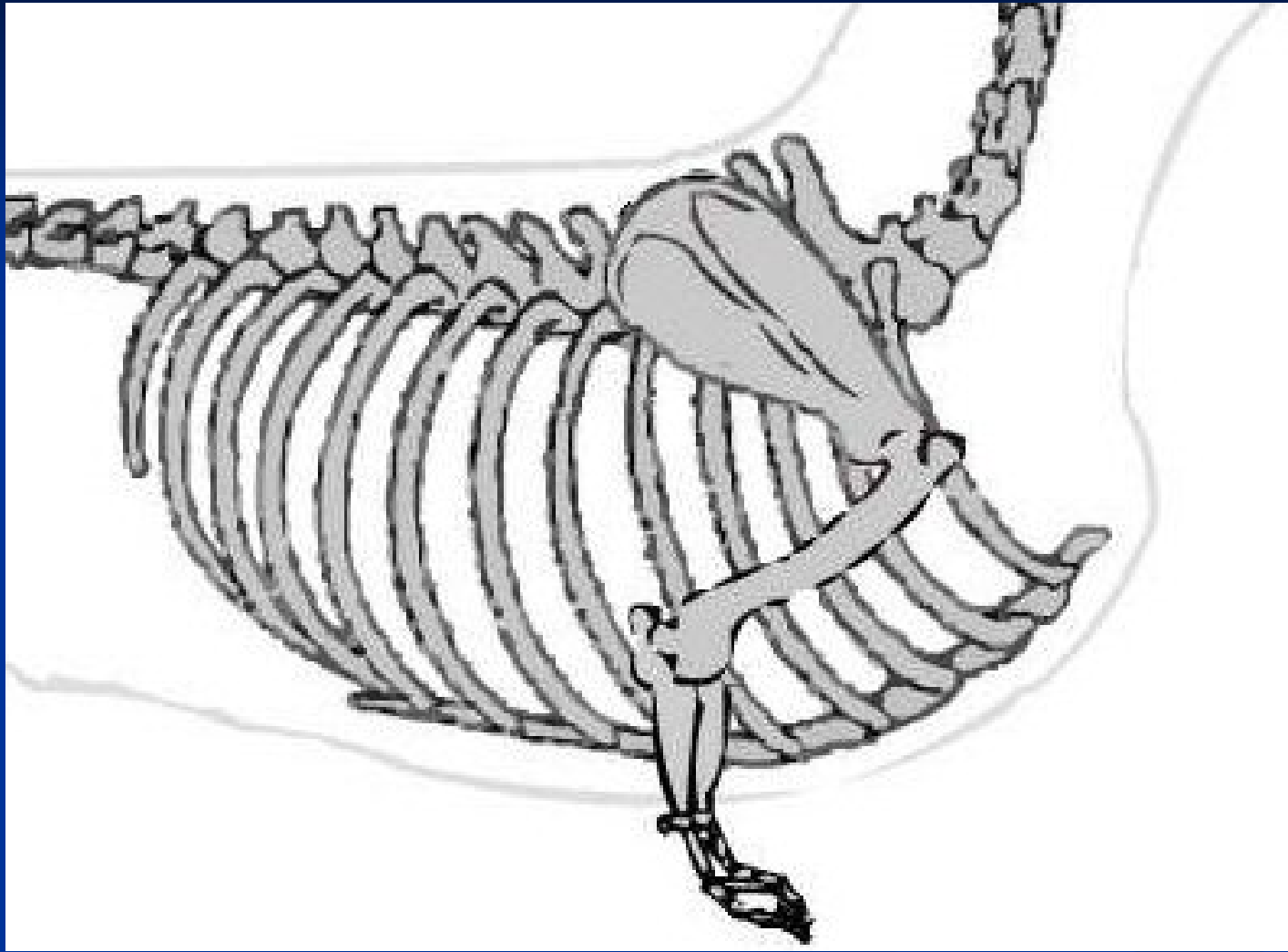
Correct Scissor Bite



Level Bite

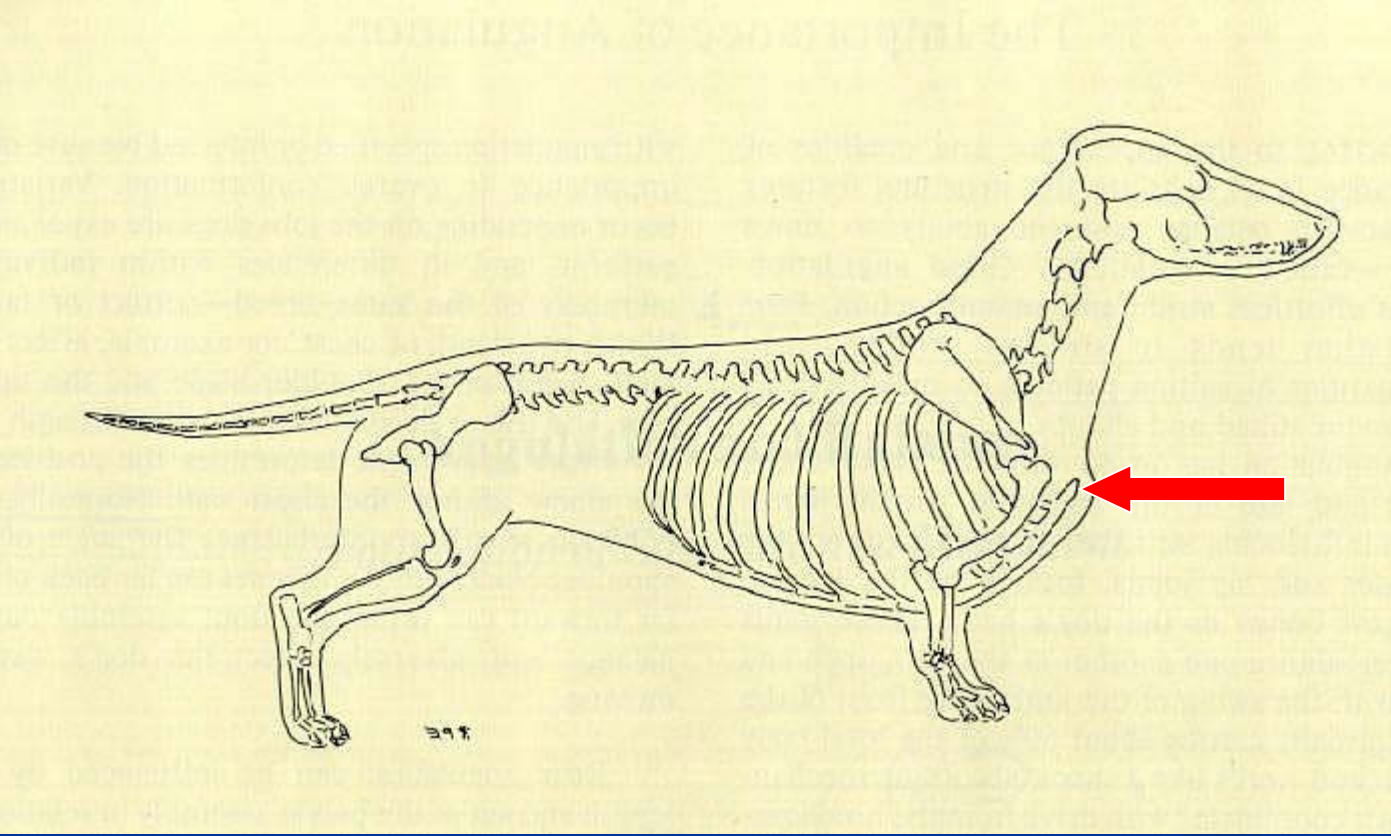


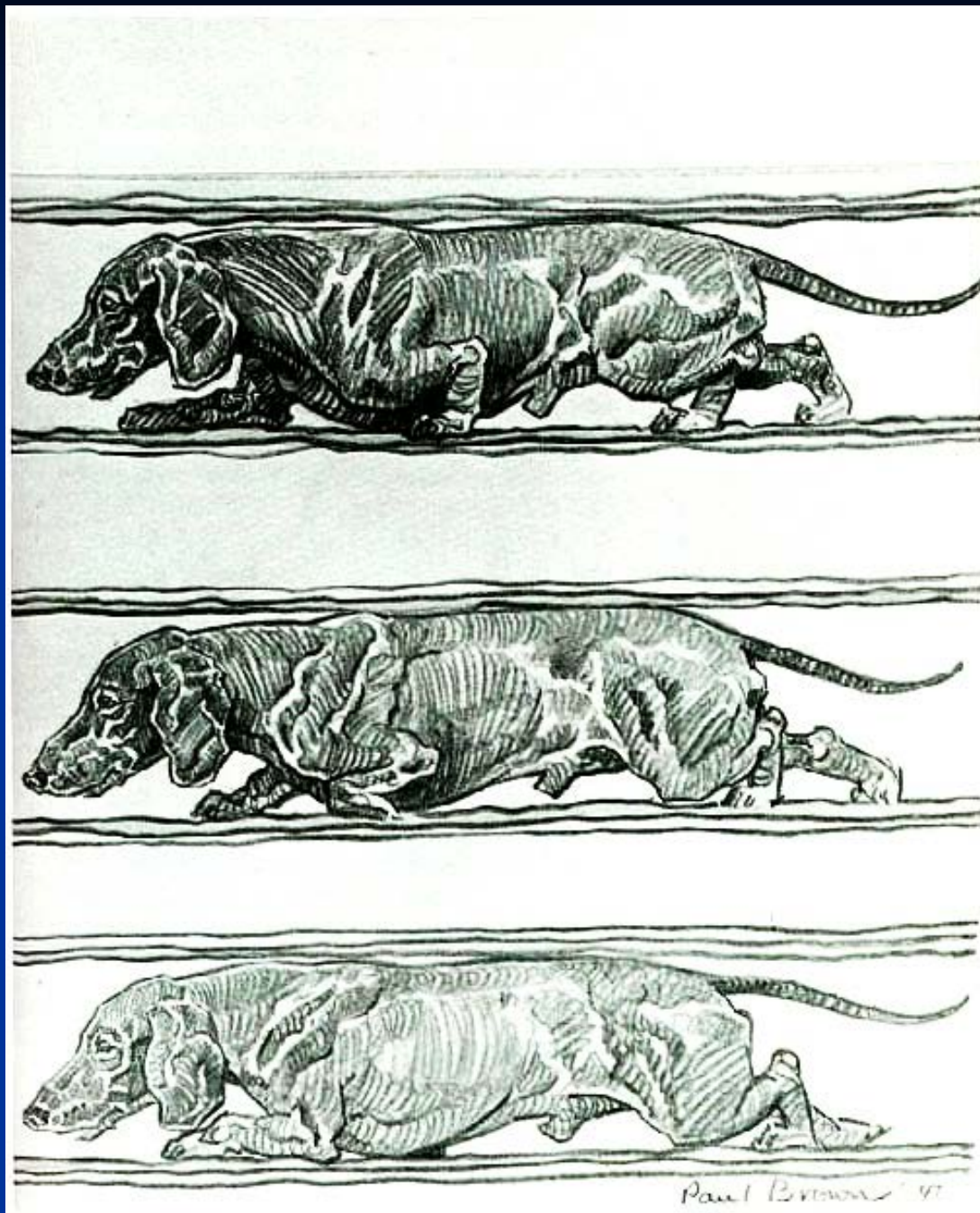
FOREQUARTERS



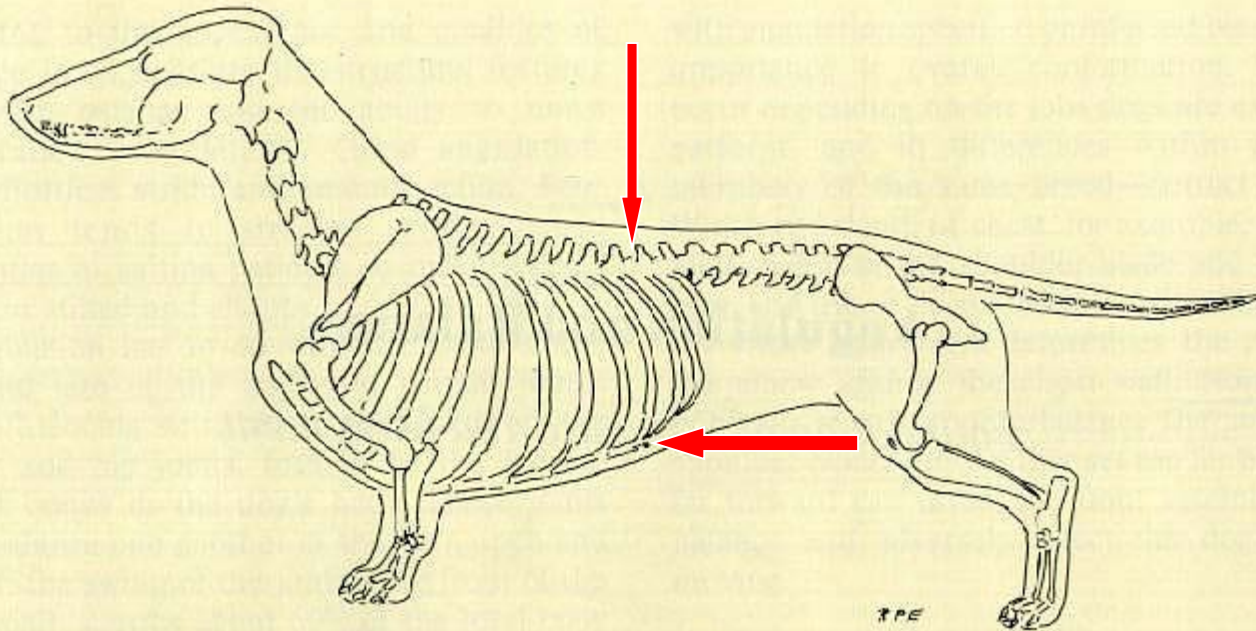


Arrows are pointed at the
depressions or dimples

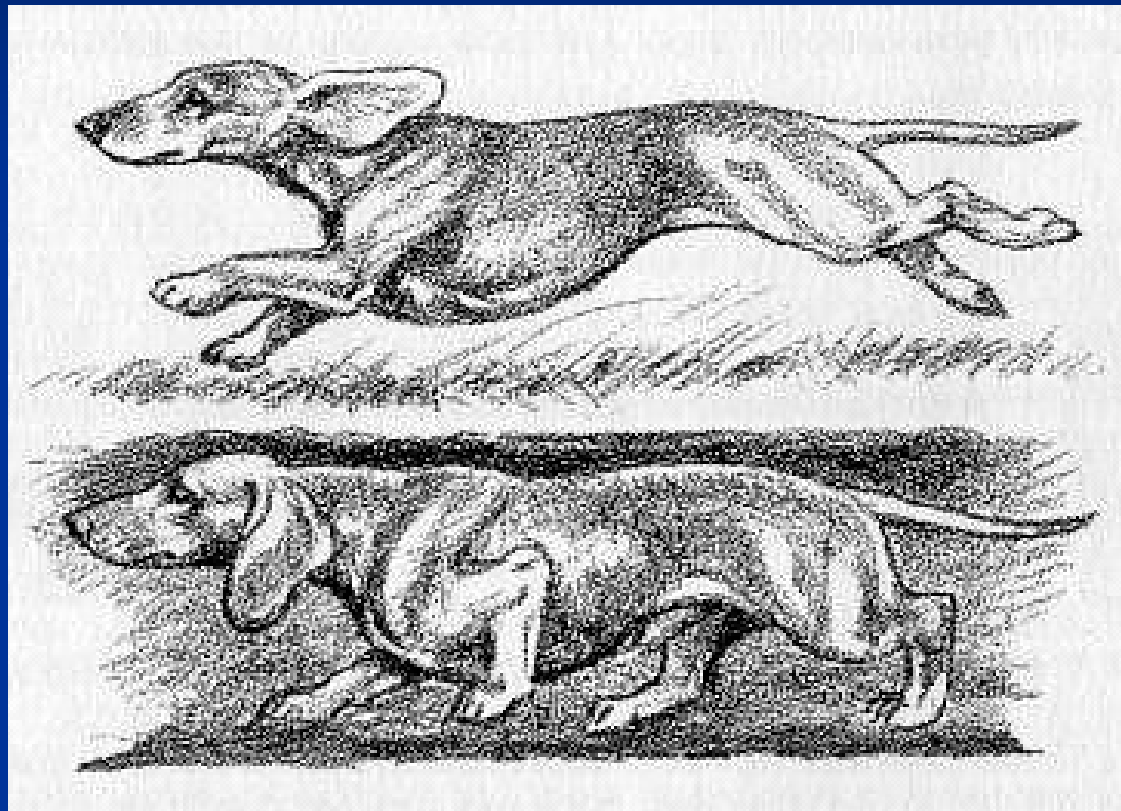


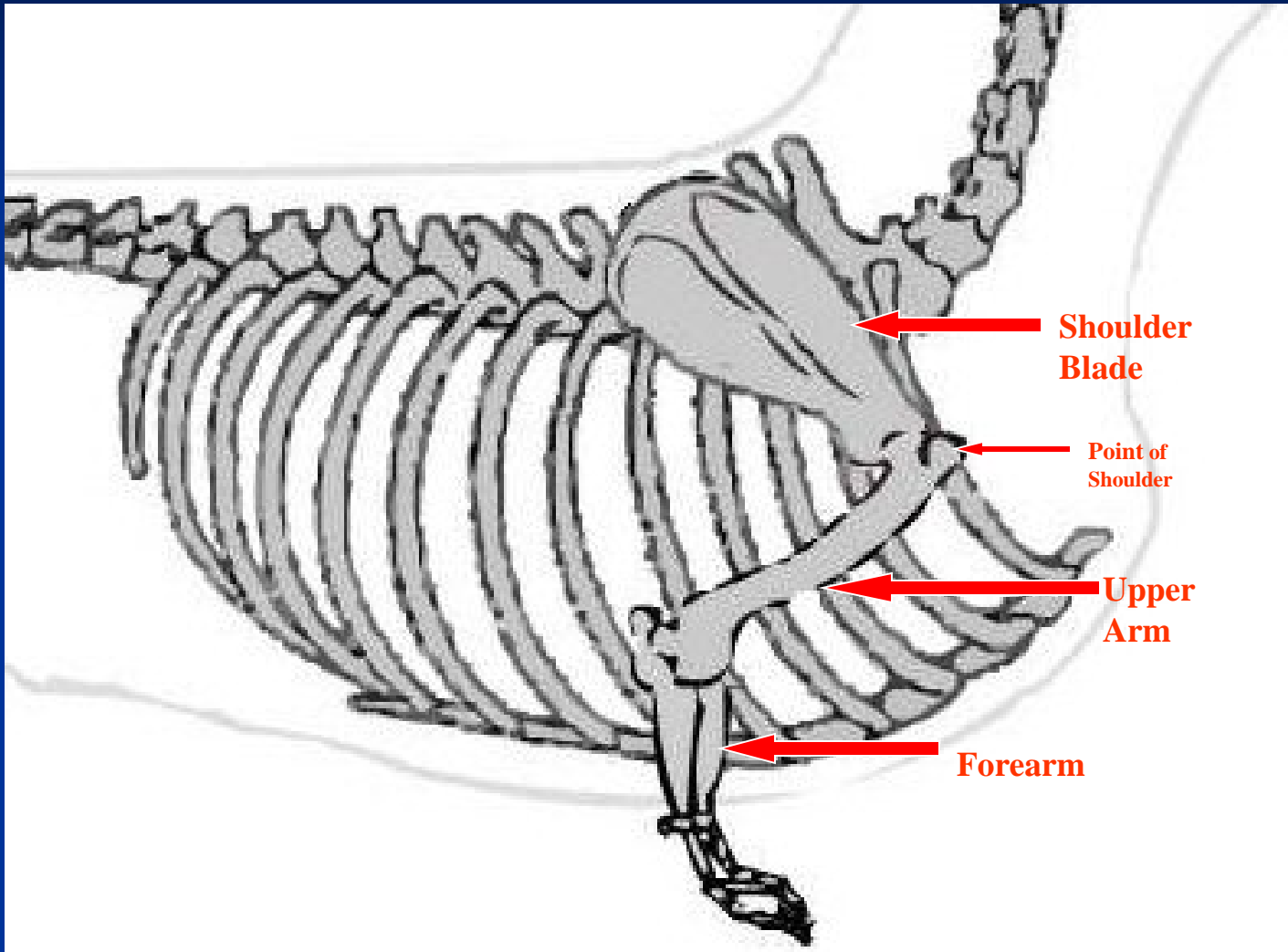


Anticline









**Shoulder
Blade**

**Point of
Shoulder**

**Upper
Arm**

Forearm

EXCELLENT SHOULDERS REQUIRE

1. ADEQUATE ANGULATION
2. SUFFICIENT INCLINATION
3. PROPER PLACEMENT

SHOULDERS



GOOD SHOULDER ANGULATION

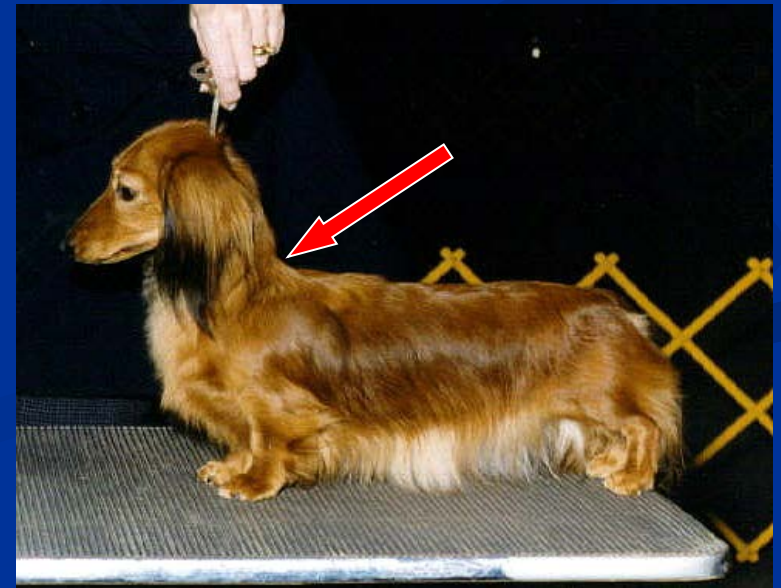


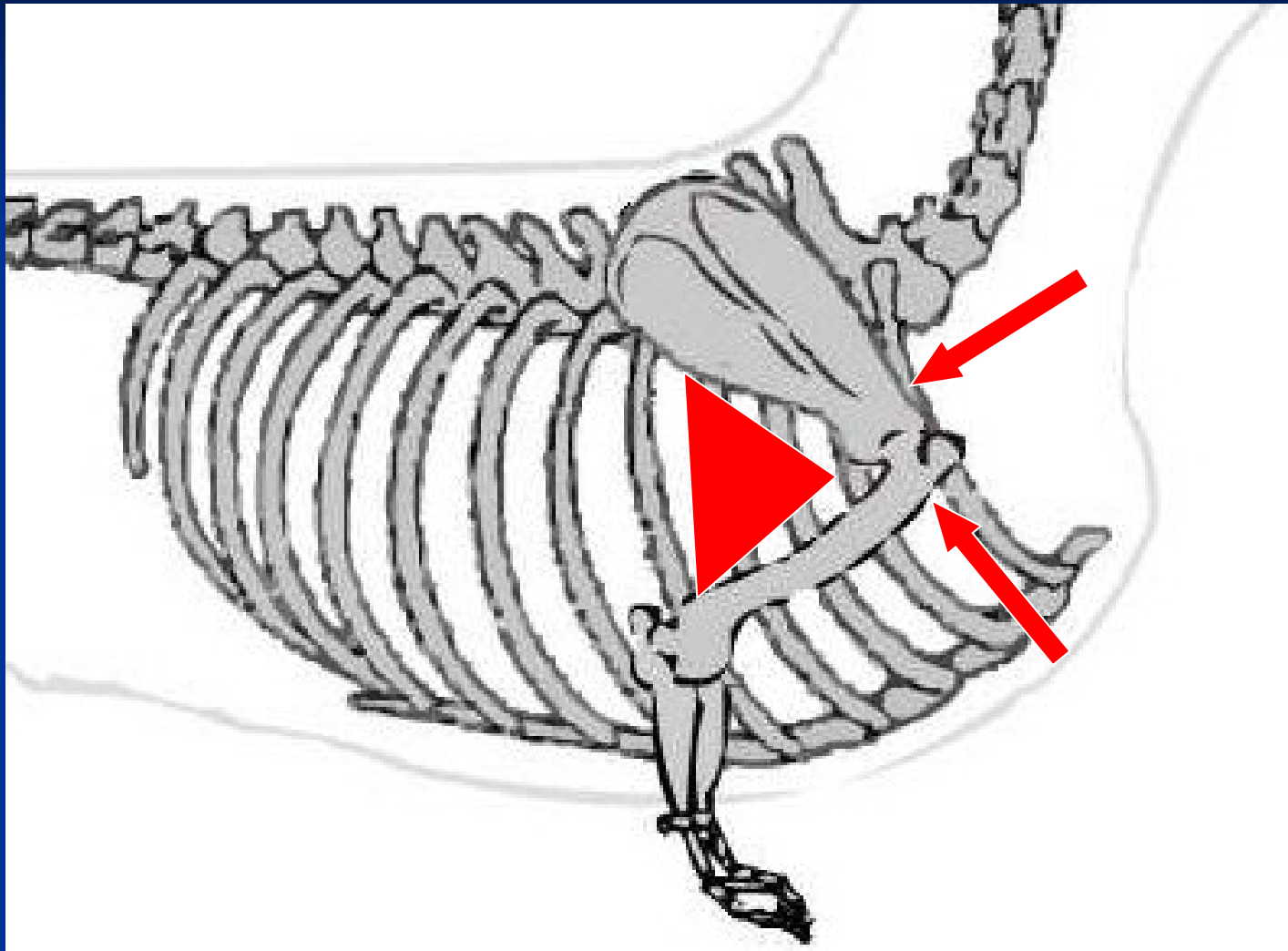
POOR SHOULDER ANGULATION

GOOD SHOULDER ANGULATION

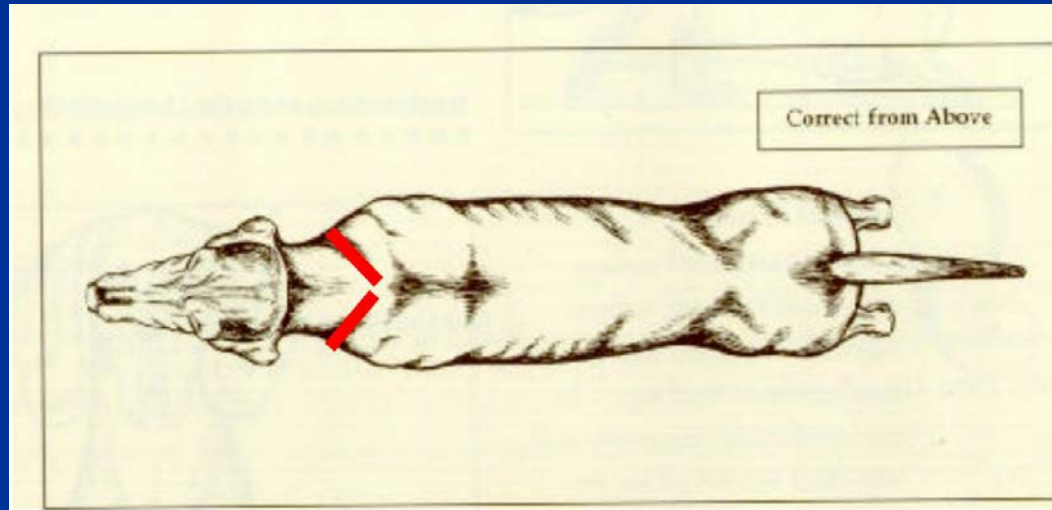


POOR SHOULDER ANGULATION

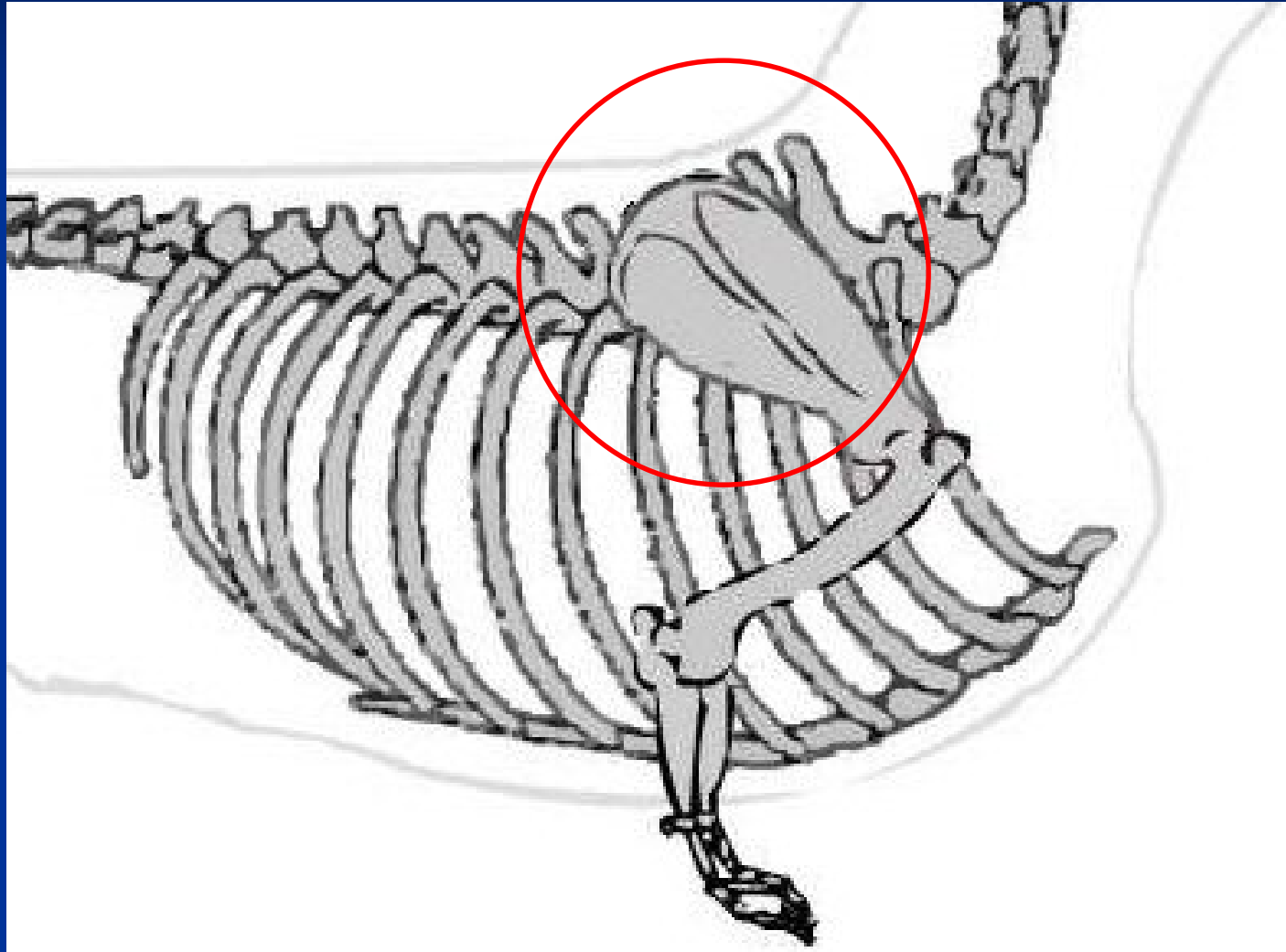




SHOULDER INCLINATION



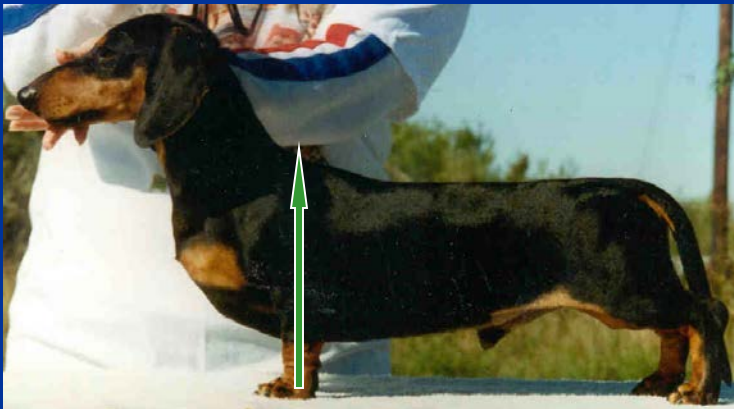
SHOULDER PLACEMENT

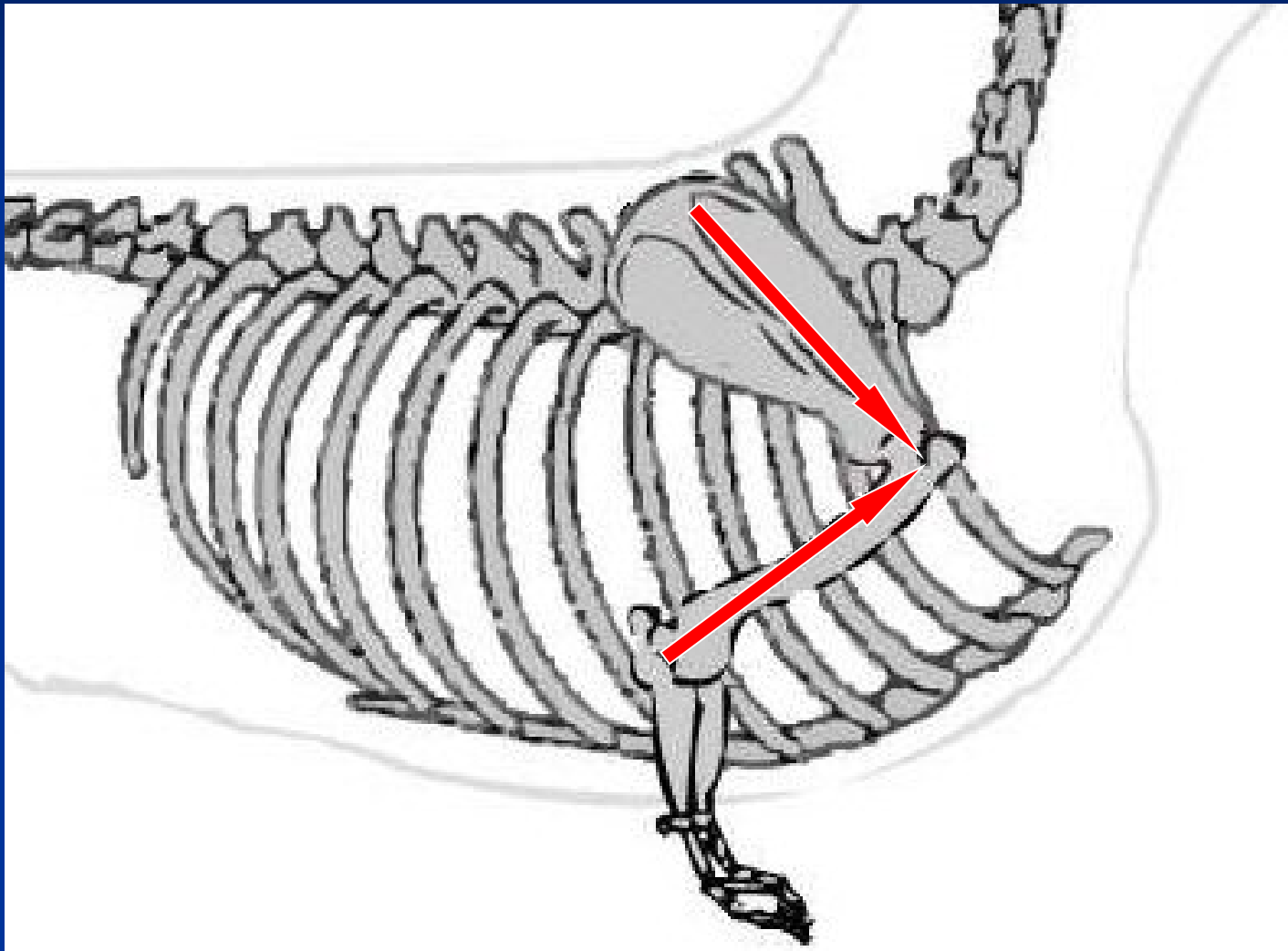


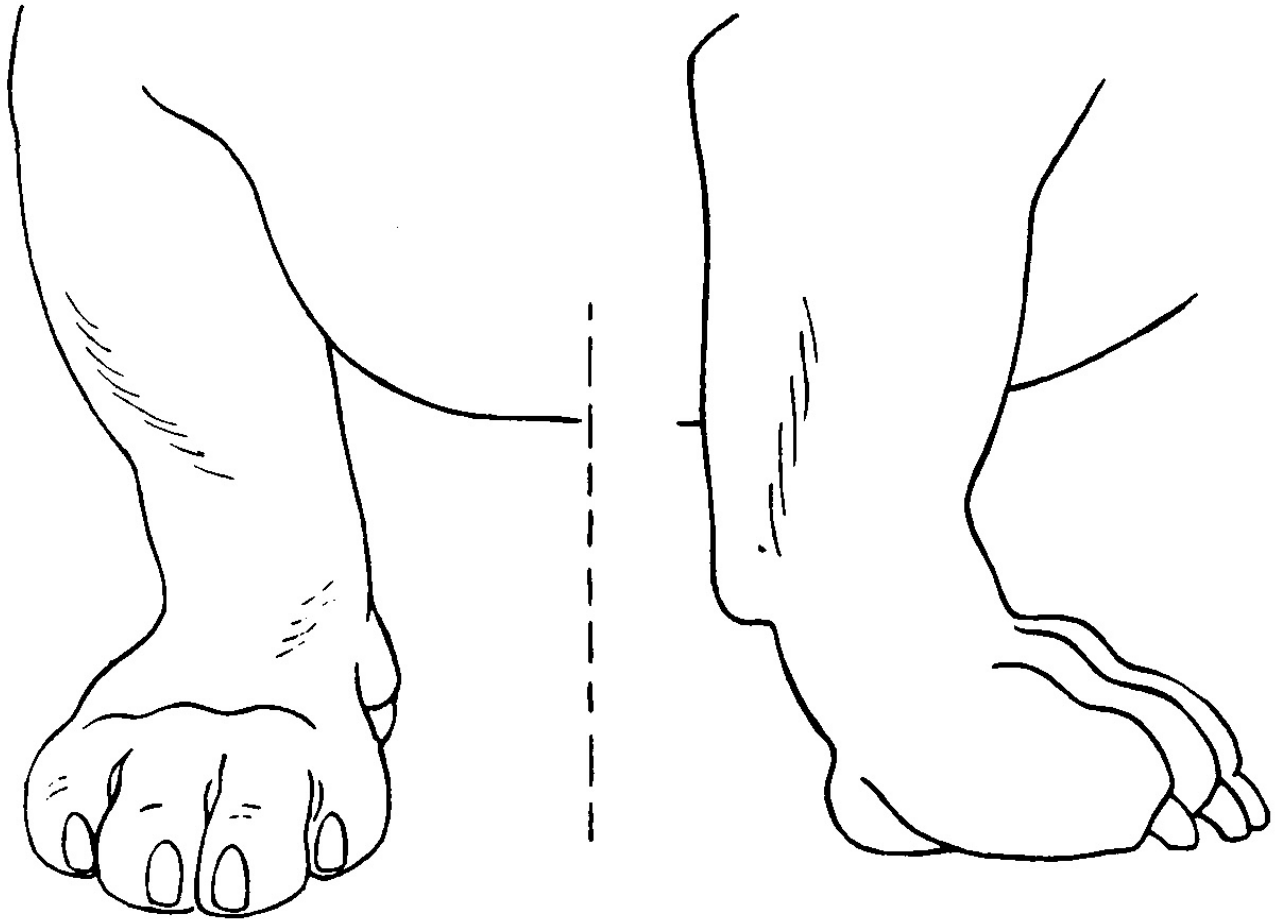
SHOULDERS : PROPER PLACEMENT

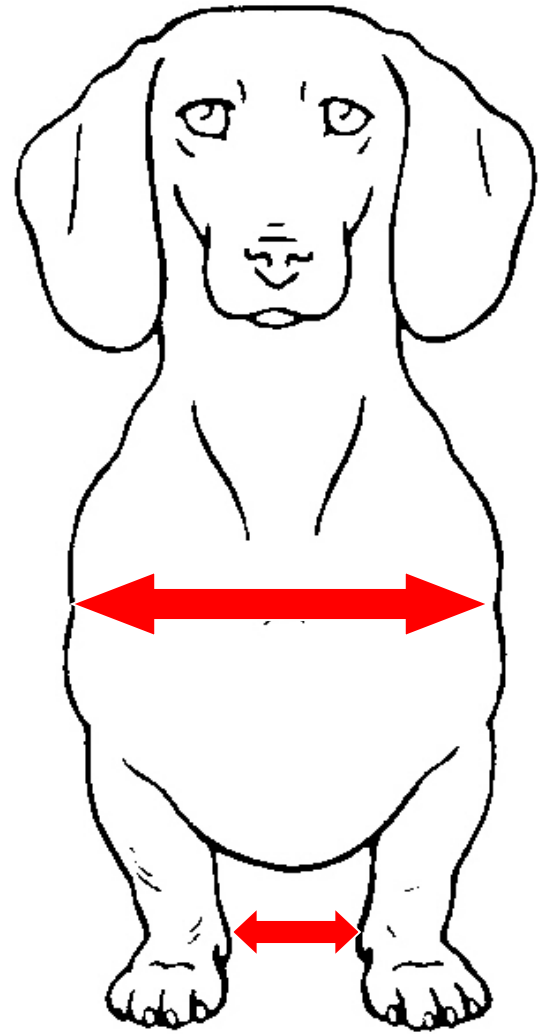


SHOULDERS: FORWARD PLACEMENT

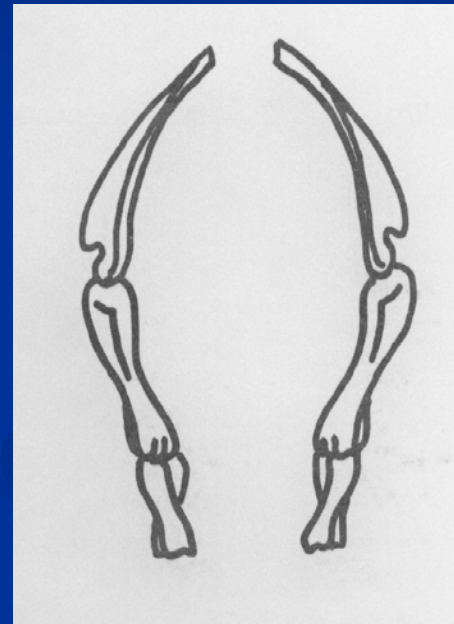
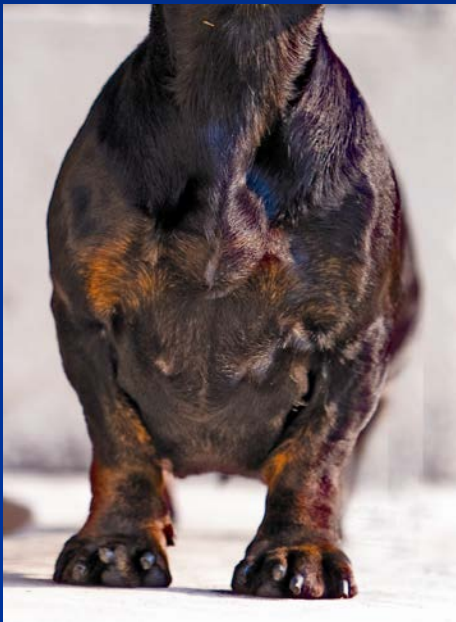






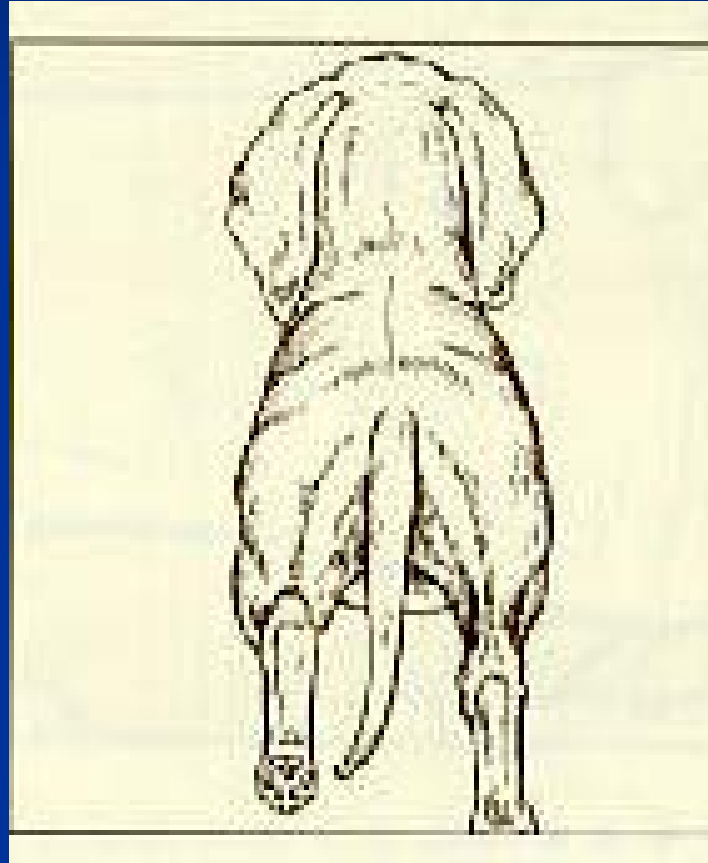


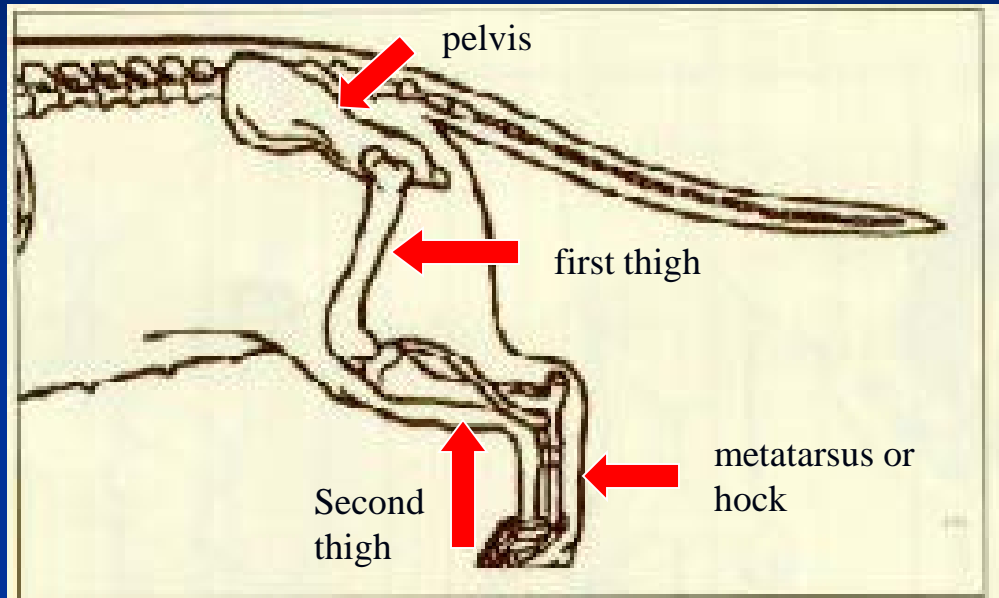
WRAPAROUND FRONT



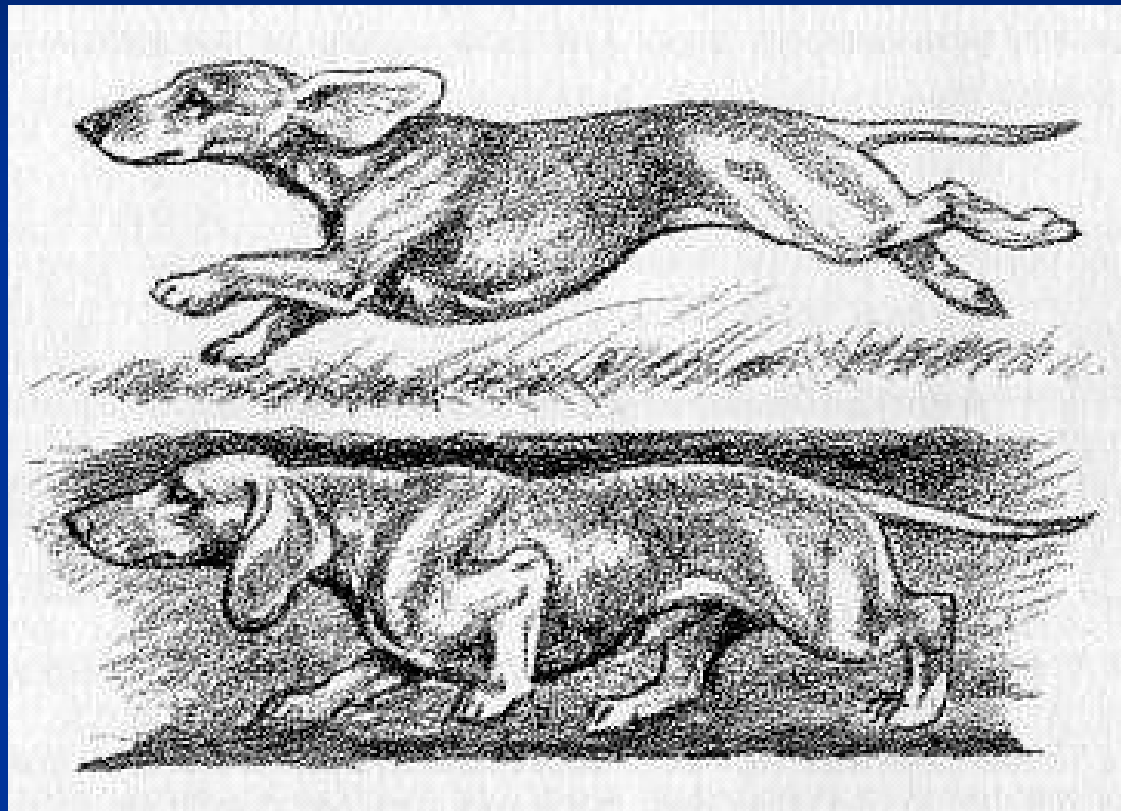
“The inclined shoulder blades, upper arms and curved forearms form parentheses that enclose the ribcage, creating the correct ‘wraparound front.’ ”

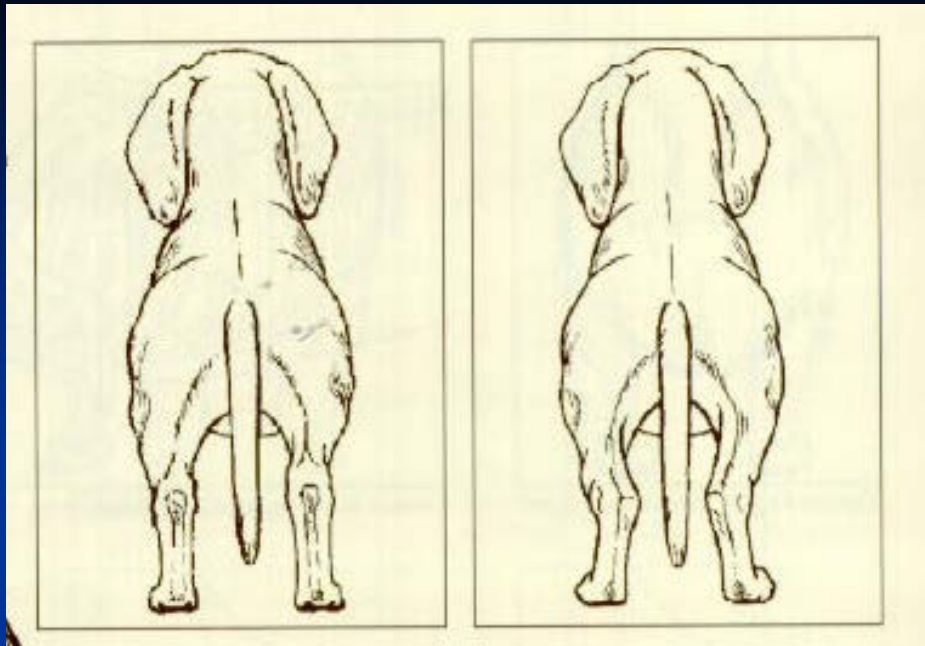
HINDQUARTERS





Correct Rear Angulation





CORRECT

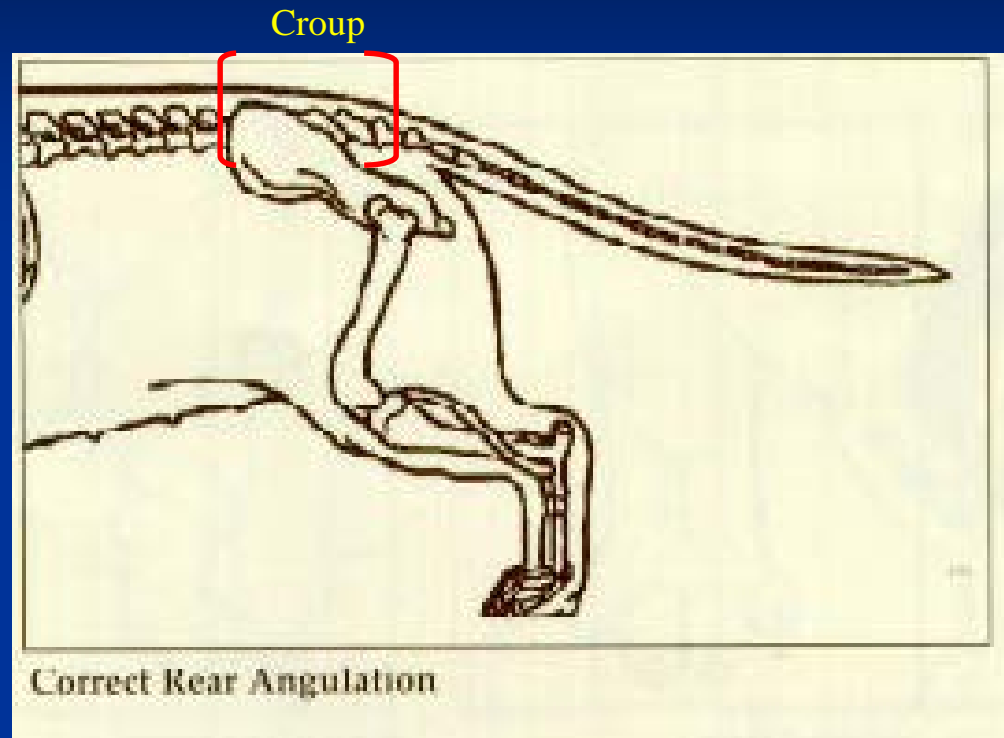
INCORRECT



CORRECT MOVING



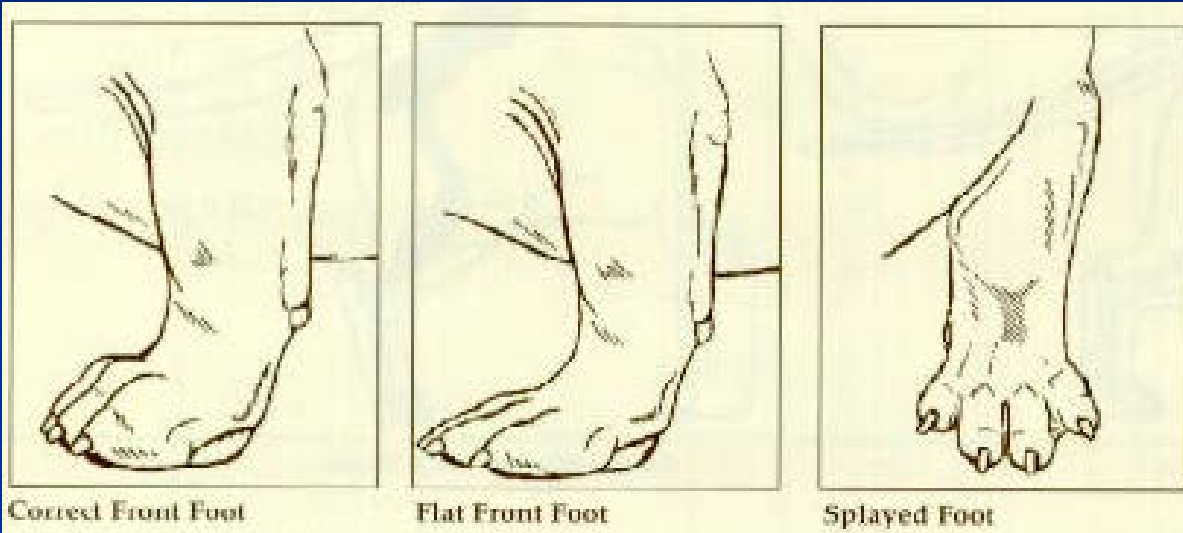
Croup The region of the pelvic girdle, formed by the sacrum and surrounding tissue.

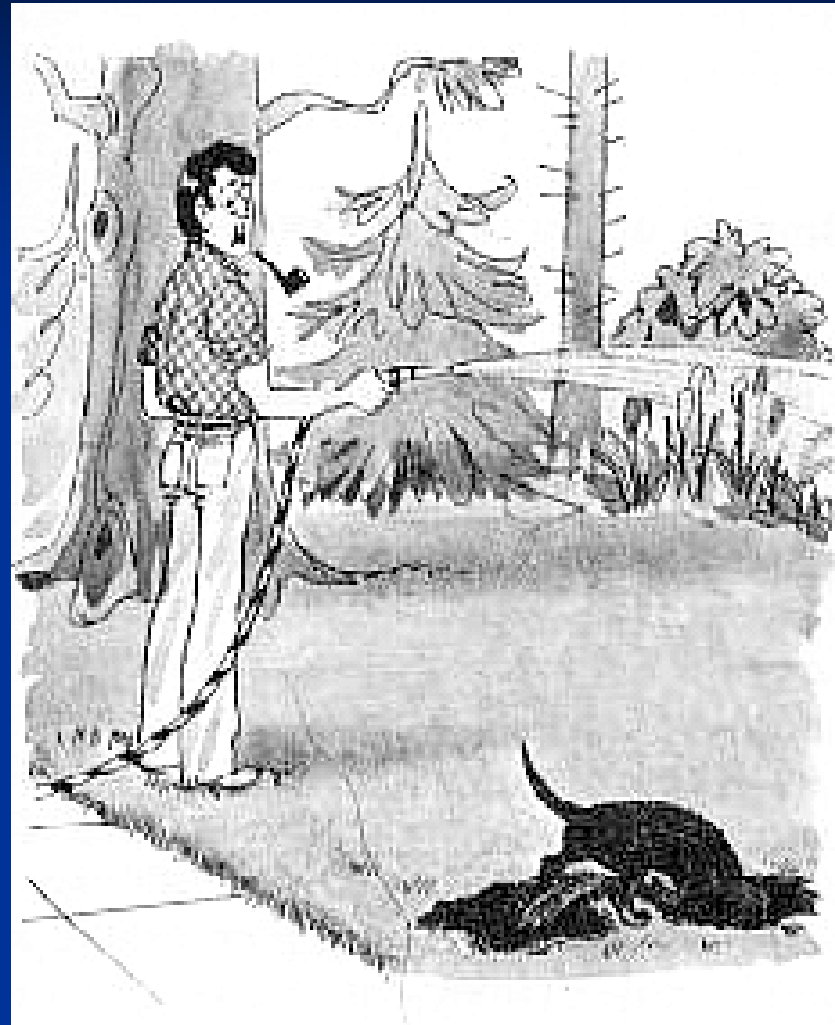


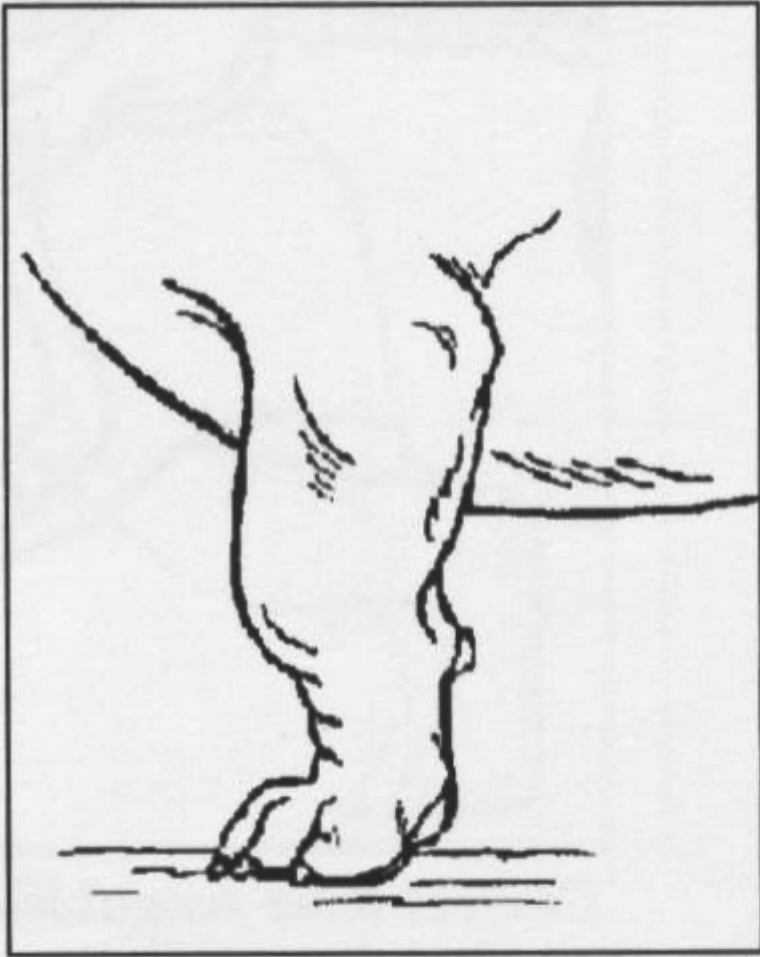
Sacrum The region of the vertebral column that consists of three fused vertebrae that articulate the pelvic girdle.



FEET







Knuckling Over



THE COATS



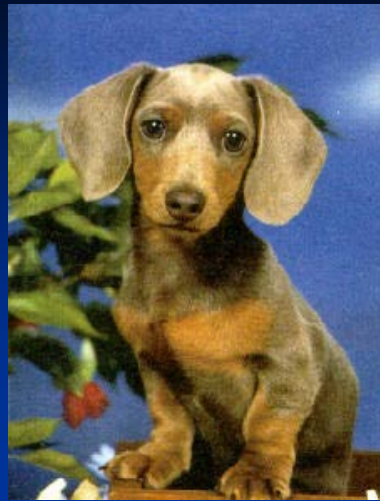




COLORS AND PATTERNS



CREAM



FAWN (ISABELLA)



BLACK & TAN



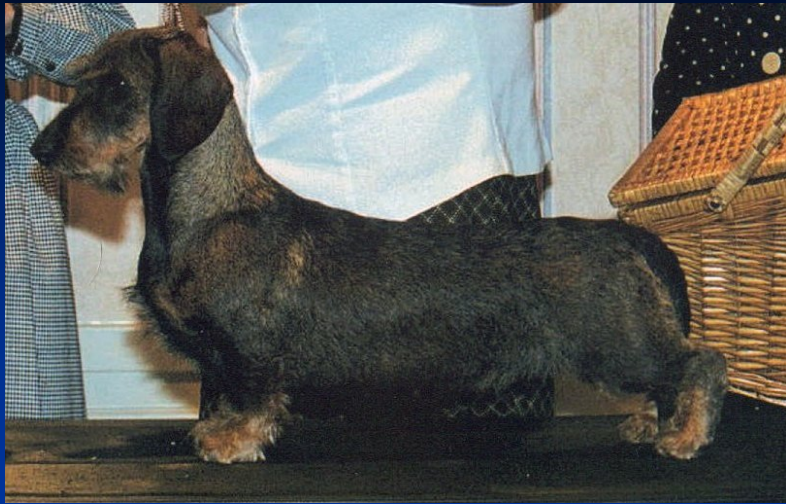
CHOCOLATE



RED



GRAY (BLUE)



WILD BOAR



BLACK & TAN



RED



CHOCOLATE

PATTERNS

DAPPLE

SABLE

BRINDLE



CHOCOLATE AND BLACK & TAN DAPPLE



BLACK & TAN DAPPLE



RED DAPPLE



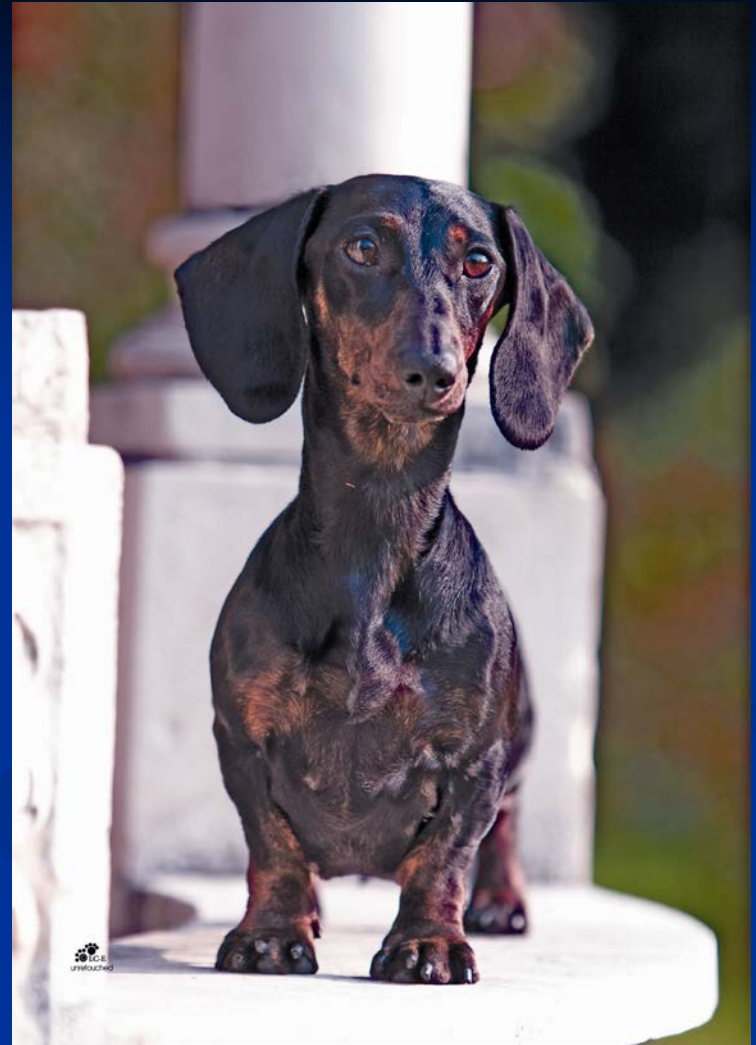
SABLE

“The sable pattern consists of a uniform dark overlay on red dogs. The overlay hairs are double-pigmented, with the tip of each hair much darker than the base color. The pattern usually displays a widow’s peak on the head. ...”





RED BRINDLE



BLACK-AND-TAN BRINDLE



Black and Cream



Black and Tan

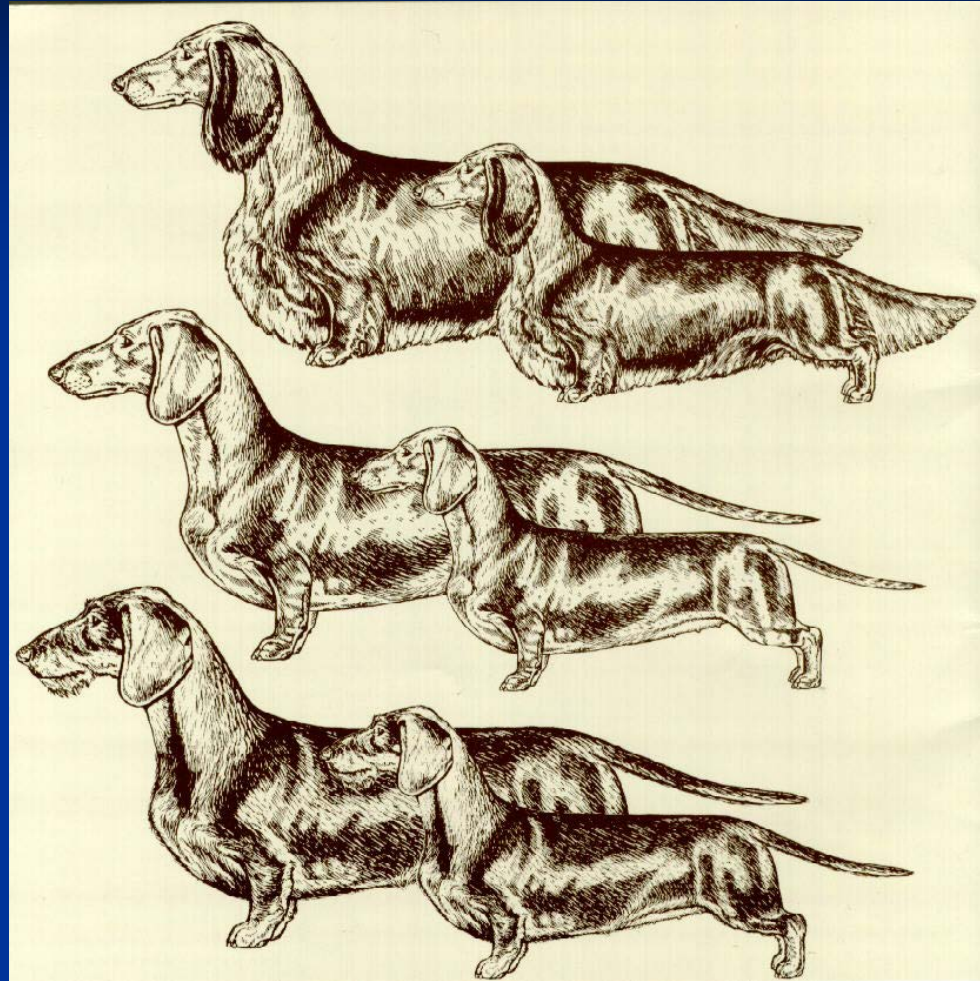
“A small amount of white on the chest, although acceptable, is not desirable.”

(Stated four times in the Dachshund breed standard)

From “The AKC Guidelines for Writing Breed Standards:”

“...In breeds where multiple colors and color combinations are acceptable, but not all colors are permitted, the *complete* list of all *acceptable* colors and color combinations *must* be included in the standard. In such cases, any colors and color combinations not mentioned are *unacceptable*, and judges are to pass judgment on this basis. ...”

SIZES:



STANDARD AND MINIATURE

MOVEMENT



41. *Giacomo Balla*

LEASH IN MOTION

1912. Oil on canvas, 35 1/2 x 41 1/4". Albright-Knox Art Gallery, Buffalo.
Bequest of A. Conger Goodyear and Gift of George F. Goodyear. 1964





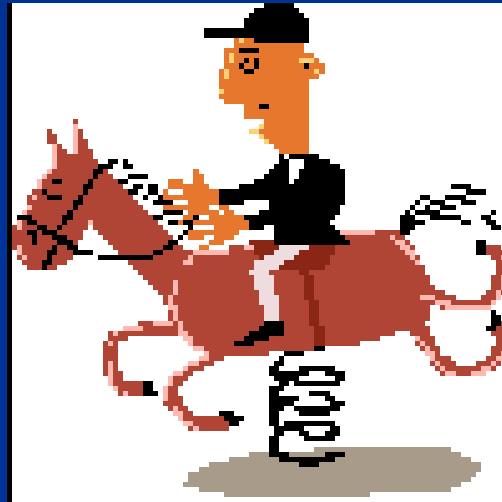


MOVING VIOLATIONS

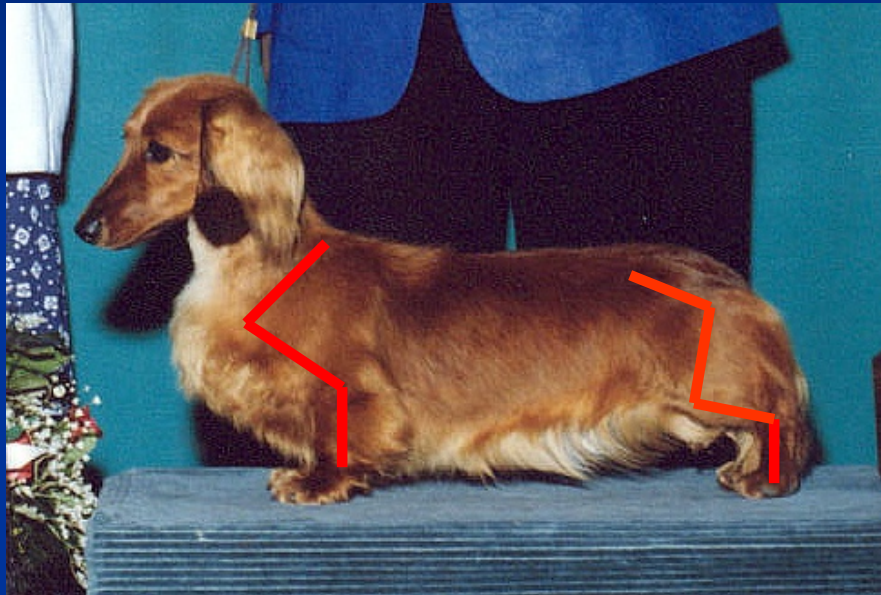
- Short steps
- Sloppy movement
- High-stepping gait
- Close or overly wide movement, coming or going
- Rear feet reaching upward toward the abdomen (belly tapping)
- Walking on the rear pasterns



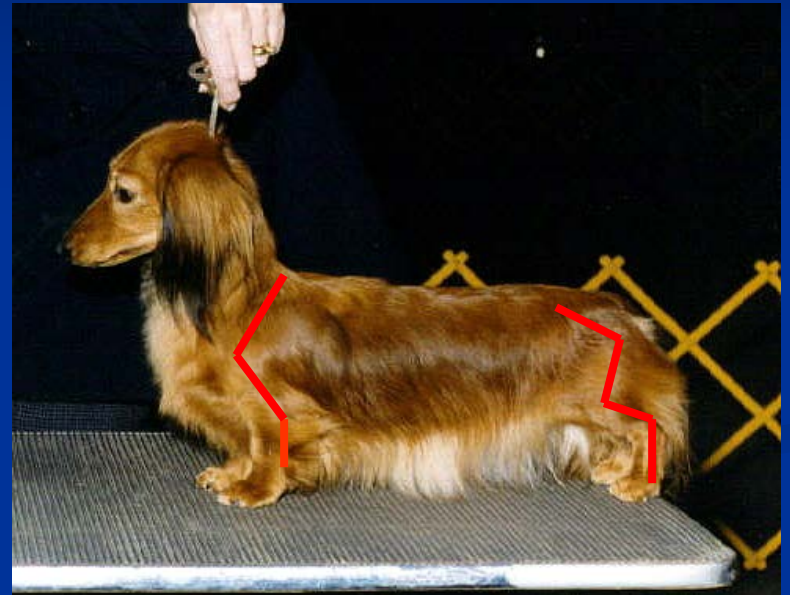
BOUNCING



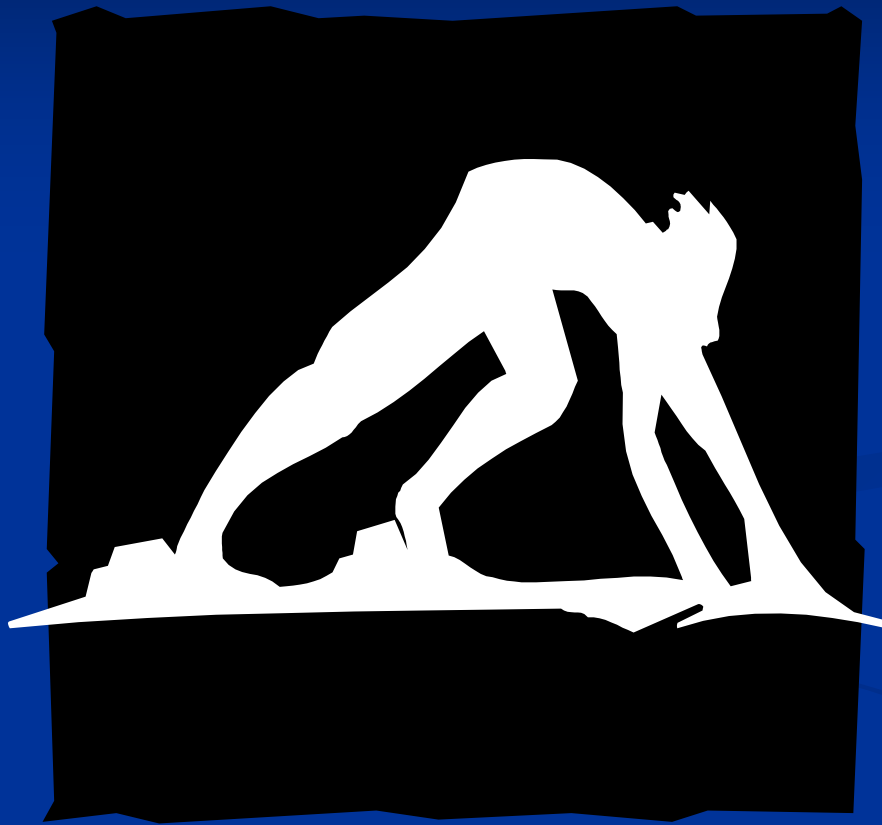




Proper balance between front and rear angulation

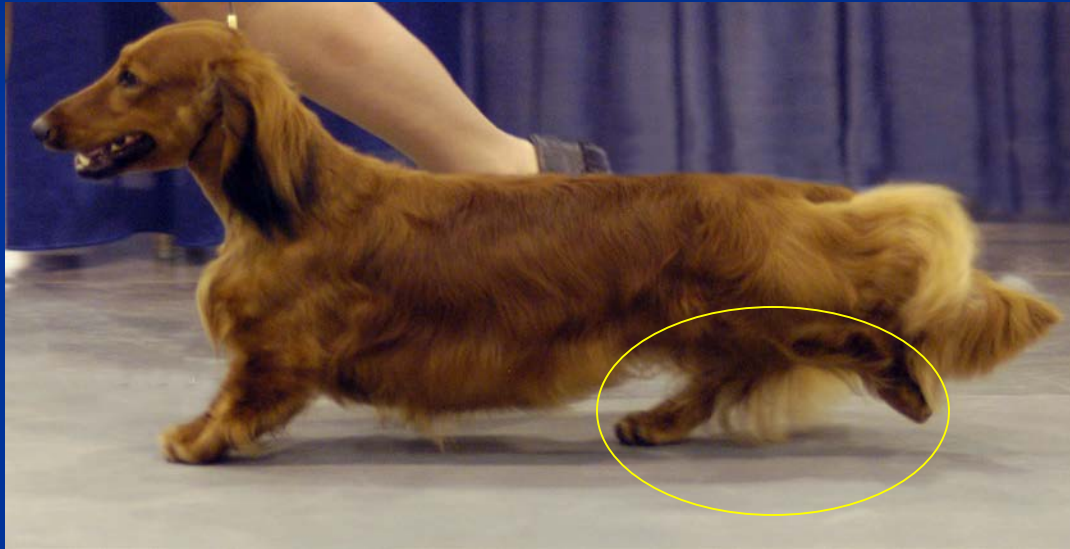


Inadequate front angulation

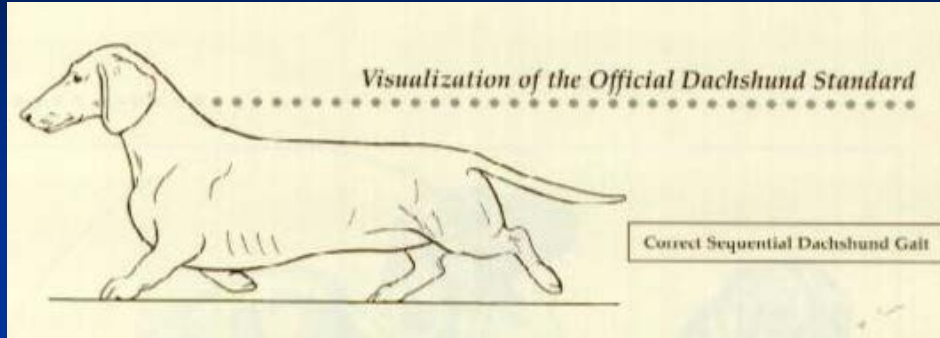




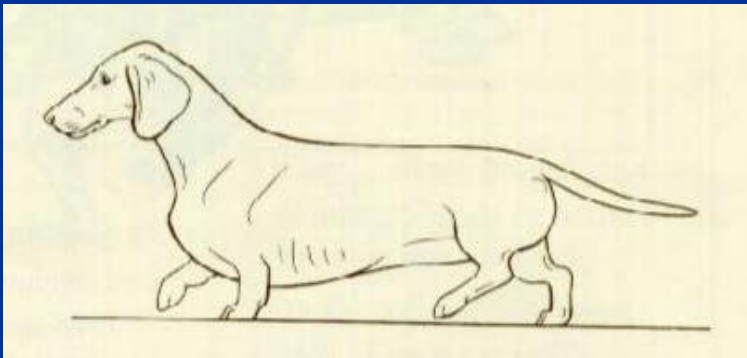
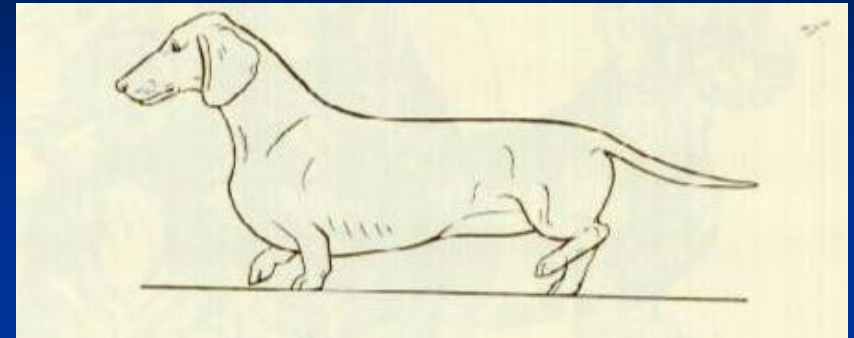




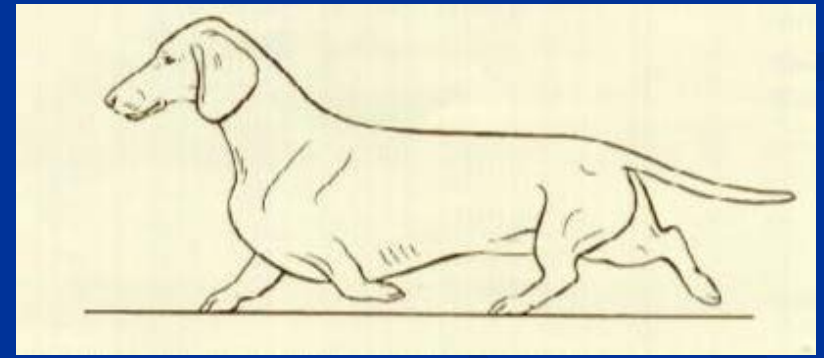
1



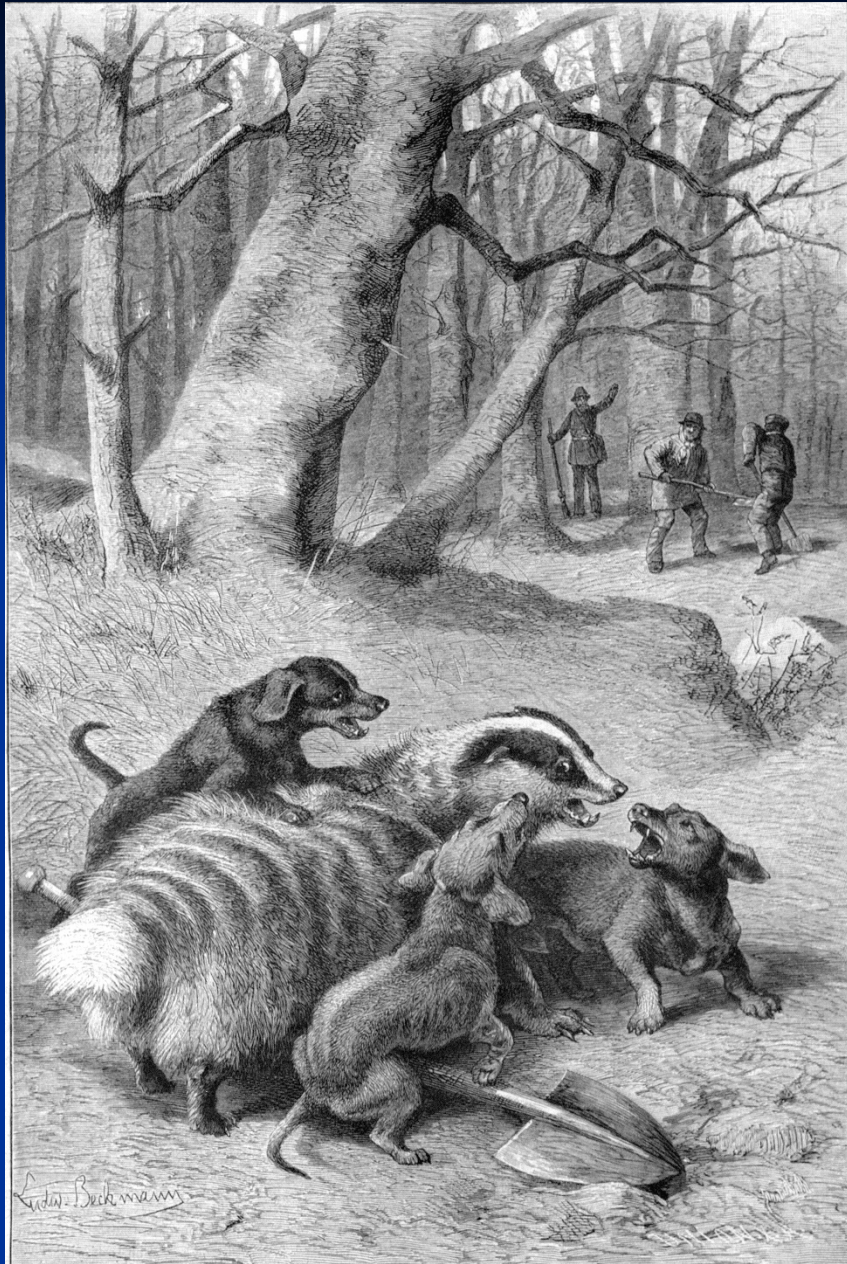
2



3



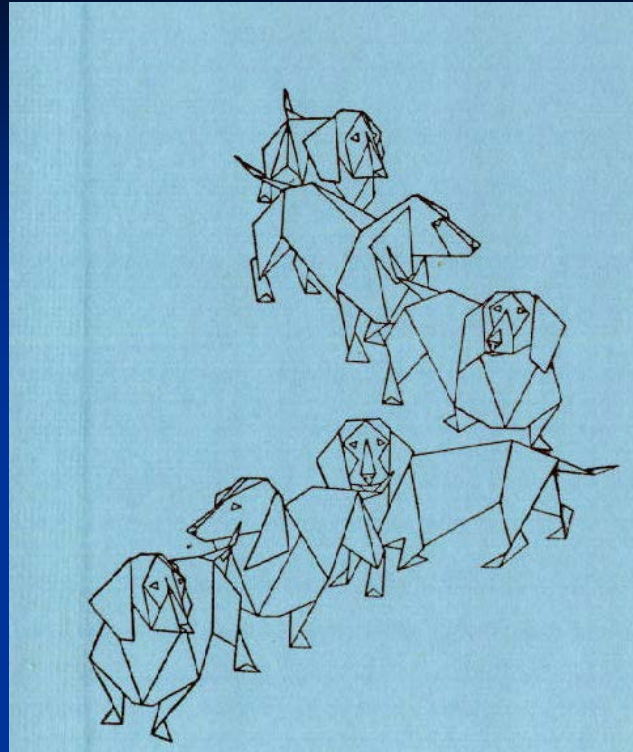
4



TEMPERAMENT

“The Dachshund is clever, lively and courageous to the point of rashness, persevering in above- and below-ground work, with all the senses well developed. *Any display of shyness is a serious fault.*”

THE



END

Acknowledgements:

Pet Dachshund, D.A. & L.A Horswell, All-Pets Books, Inc. 1958

The Dachshund A Dog for Town and Country, A Gordon, Howell Book House, 2000

Dachshund Club of America's Visualization of the Official Dachshund Standard, ed. K. Ladd

The New Dog Steps, R. P. Elliott, Howell Book House, 1988

Melissa M. Sworab M@K Designs

Our Friends and Colleagues