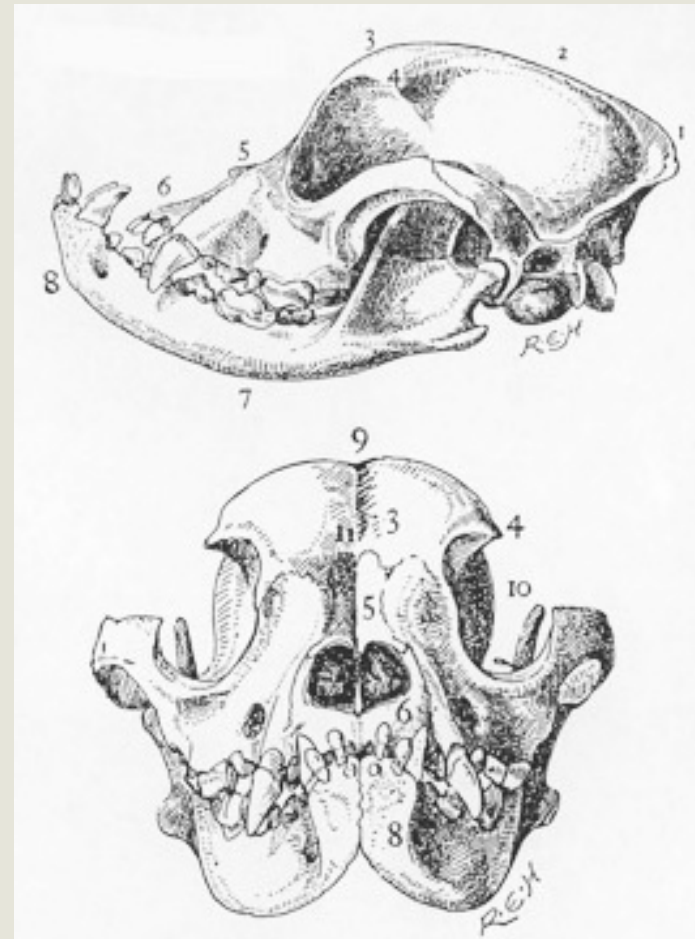
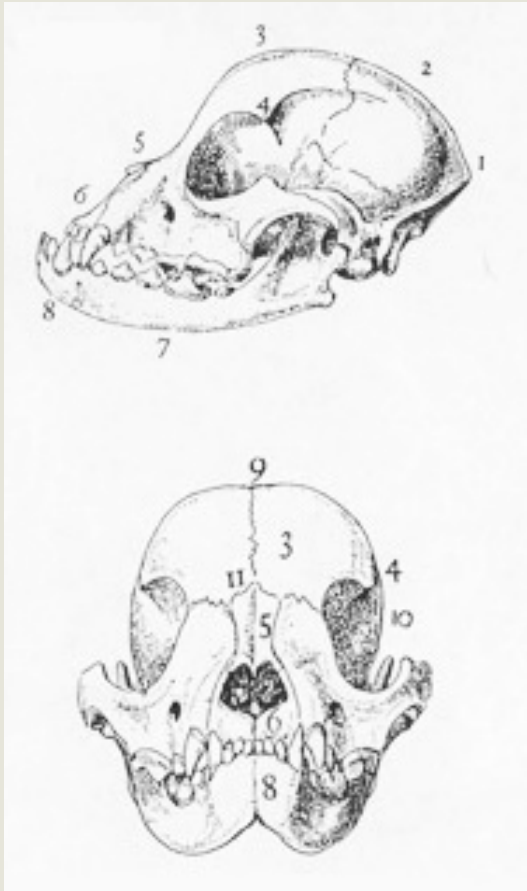


Comparison of Bulldog and French Bulldog Skulls (ca. 1920)



- Underjaw more undershot and with more turnup in Bulldog than French Bulldog
- Proportional fullness of skull in French bulldog greater than in Bulldog
- Furrow in Bulldog forehead and its absence in French Bulldog
- Ridges and grooves more marked on Bulldog skull than on French Bulldog skull.
- French Bulldog skull more moderate than Bulldog skull

Comparison of French Bulldog & Bulldog



Note similarities, but also note significant differences in ears, width of heads, degree of upturn of underjaw, and width of fronts.

Comparison of French Bulldog & Bulldog



Note that the “square” formed by the Frenchie front is measured below the brisket, whereas in the Bulldog front it includes the brisket.

Comparison of French Bulldog & Bulldog Profile



STRUCTURE: Note differences in size, bone, degree of layback of foreface, ears and head; and similarities in topline.

GAIT: Frenchies should gait with reach and drive; the action is unrestrained, free and vigorous. By contrast the Bulldog gait is a loose-jointed, shuffling, sidewise motion, giving the characteristic “roll.”