



WELCOME

Kuvasz Club of America
Judges Education

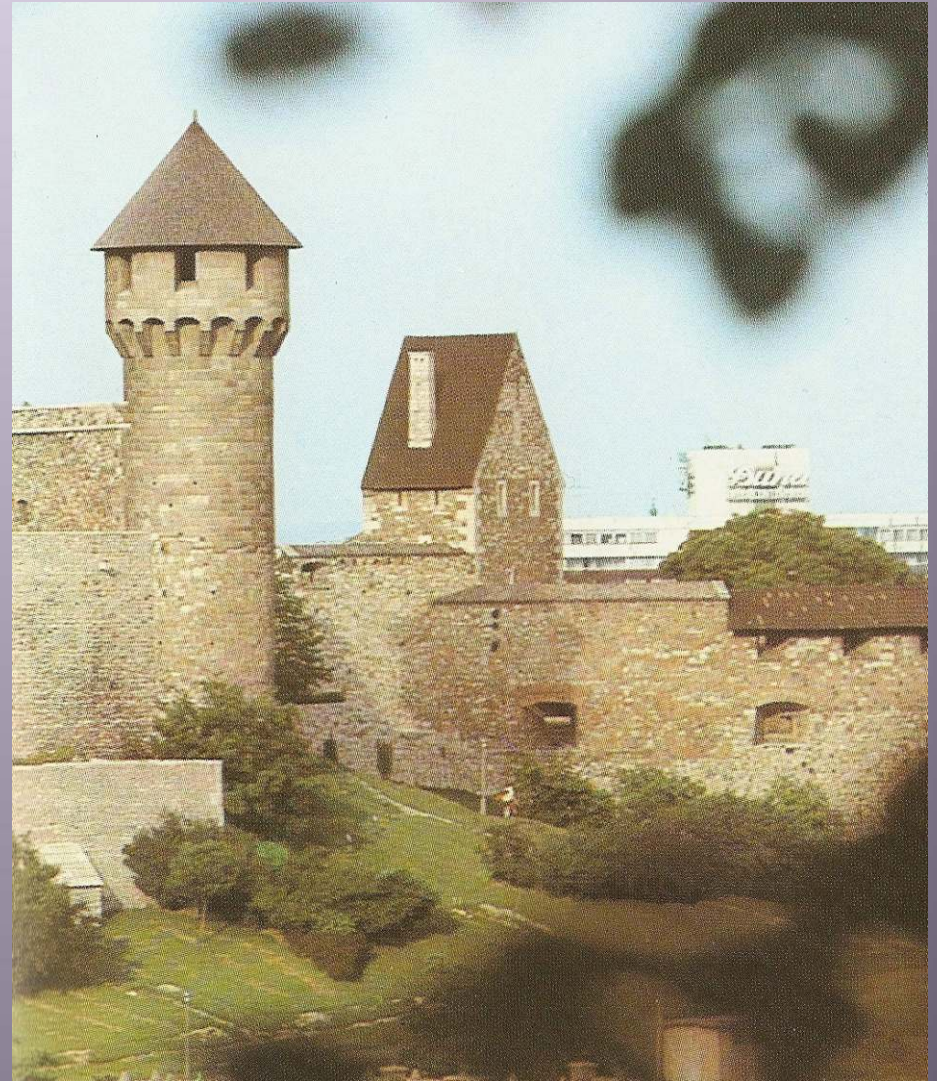
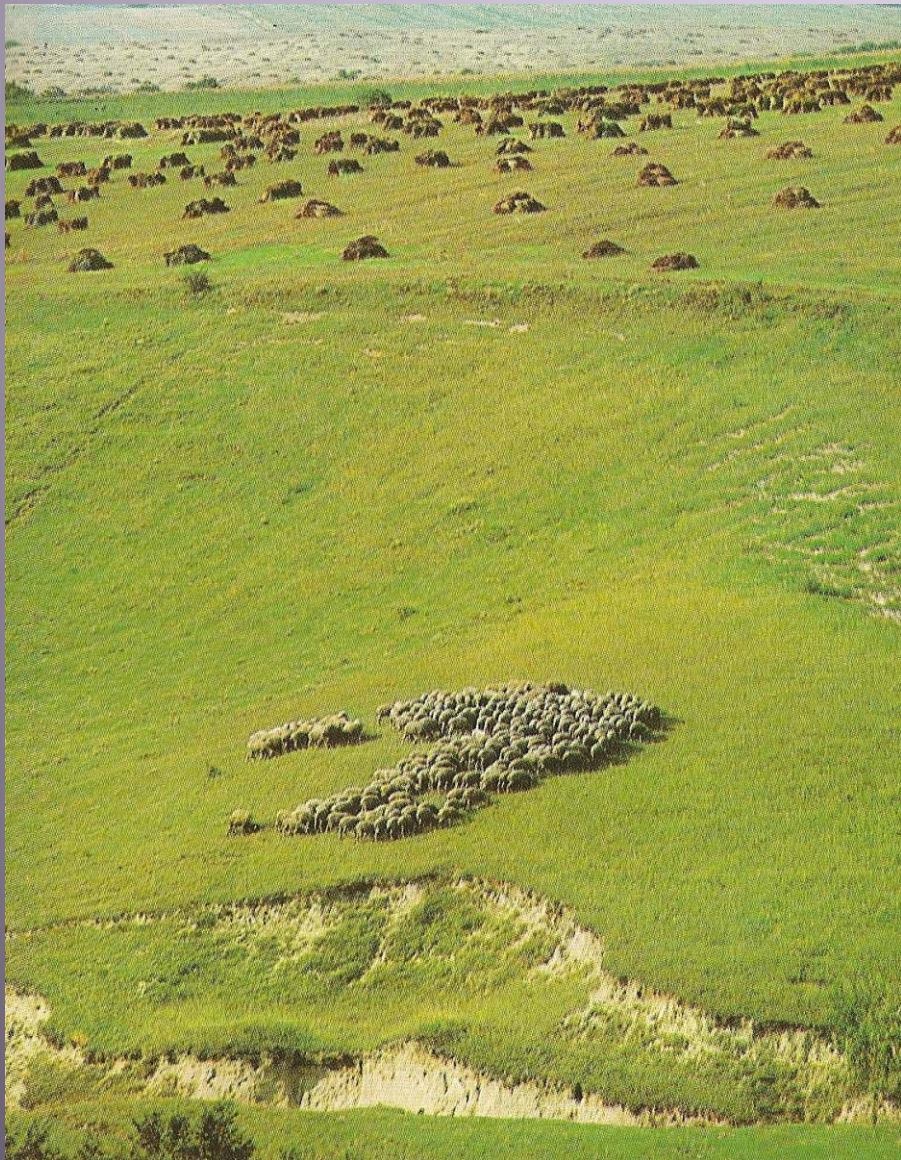
Welcome

- Presentation and presenters – approved by KCA membership
- Please feel free to ask questions
- The dogs are here for you to observe and for interaction with the participants
- Each person with a dog will have positives and negatives regarding their dog

LGD History - Path of the Nomads



The breed achieved its present appearance in Hungary.



King Matthias



- **1458-1490** The rule of King Matthias. Cultural life of a European standard flourished in his palaces at Buda and Visegrád. For a few decades, Hungary lived on a West European standard.

Nobility's Armed Guard

- During the Ottoman-Turkish takeover the breed was called “Kawasz”-nobility's armed guard.



In Hungary

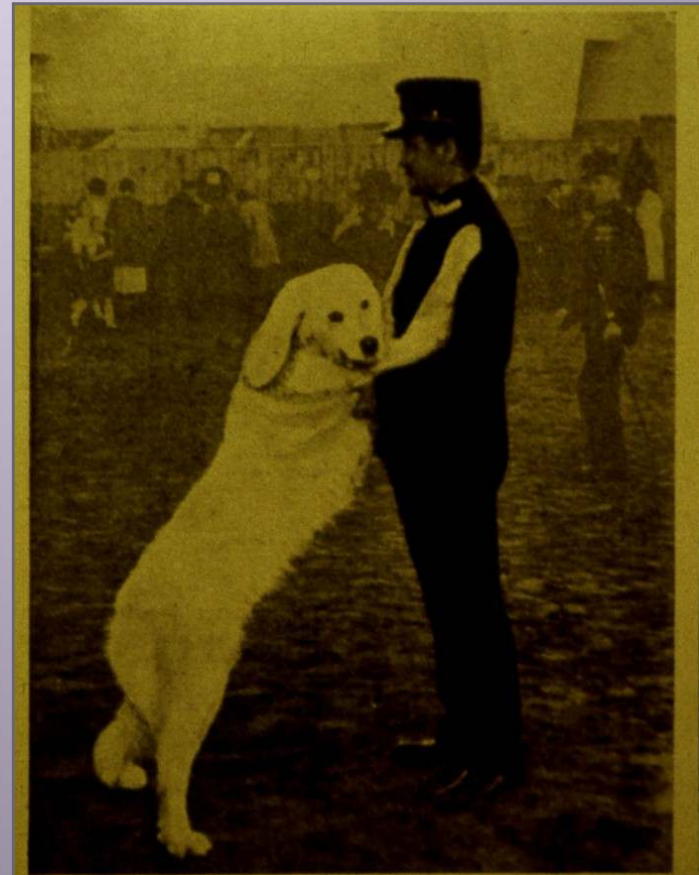


- Hungarian KC formed in 1880
- First Kuvasz shown in 1883
- First Hungarian breed standard written in 1885, emphasizing performance ability only.

Prior to WWII



World War II



Photo]

IN HUNGARY.

[G. Denes.

Among the Kuvasz trained for service by the Budapest Police, "Pajtás" has proved itself the most intelligent member of its breed. It is intended that the native Kuvasz shall gradually replace the Alsatian in the Hungarian Police Force.

In America

- Mrs. Mabel Marsh entered her Kuvasz at WKC in 1935.
- First AKC standard approved that year.
- Kuvasz Club of America formed in 1966
- First Group placement earned in 1973



The Breed's first BIS awarded in 1977

Ch. Hamralvi Heimdall Odin



This is a versatile, trainable breed.



But always remember what the breed was created to do.

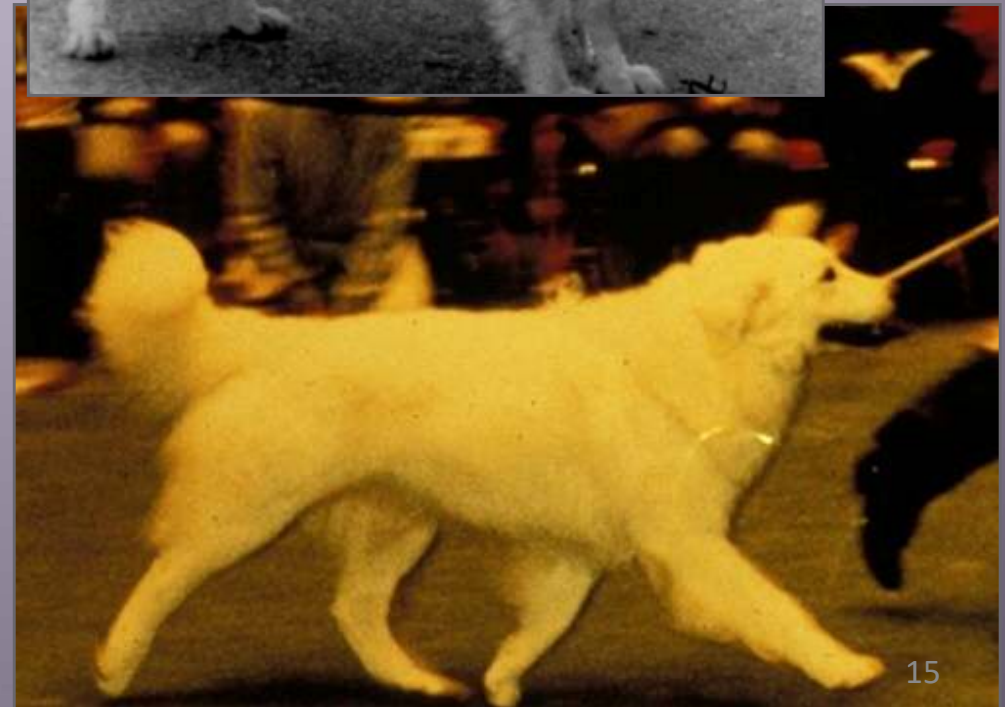


An overview of the breed standard.

General Appearance

A working dog of larger size, sturdily built, well balanced, neither lanky nor cobby. White in color with no markings. Medium boned, well muscled, without the slightest hint of bulkiness or lethargy. Impresses the eye with strength and activity combined with light-footedness; moves freely on strong legs. The following description is that of the ideal Kuvasz. Any deviation must be penalized to the extent of the deviation.

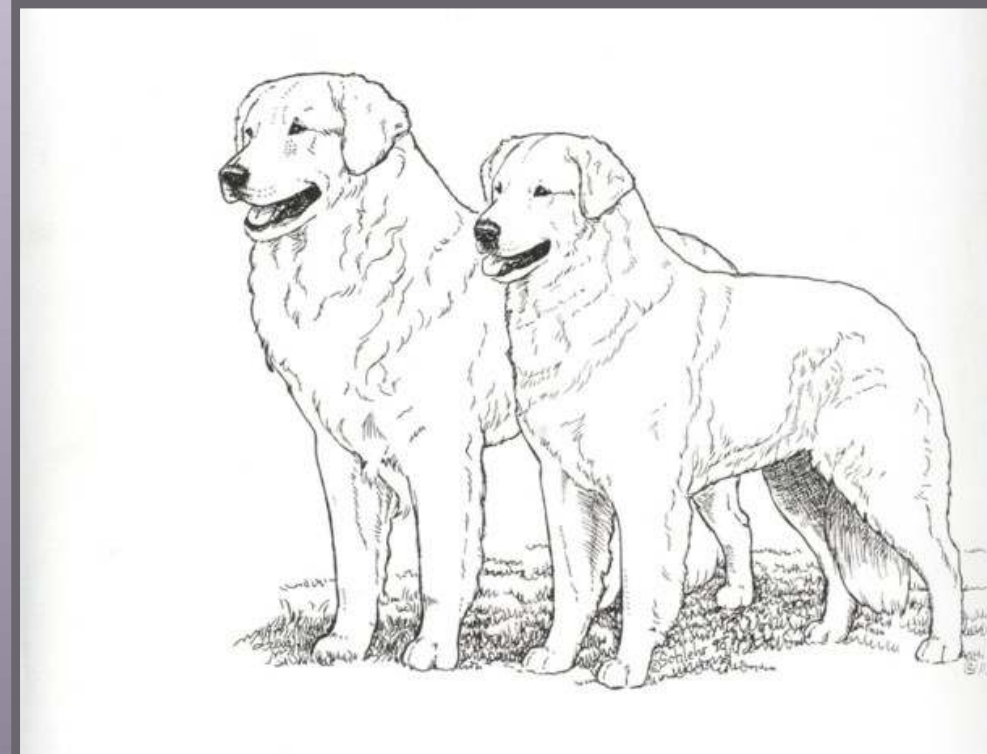
General Appearance



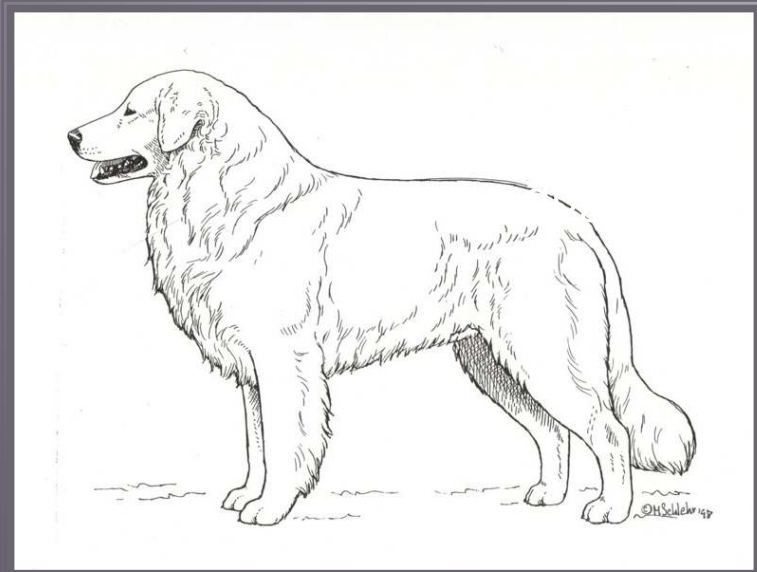
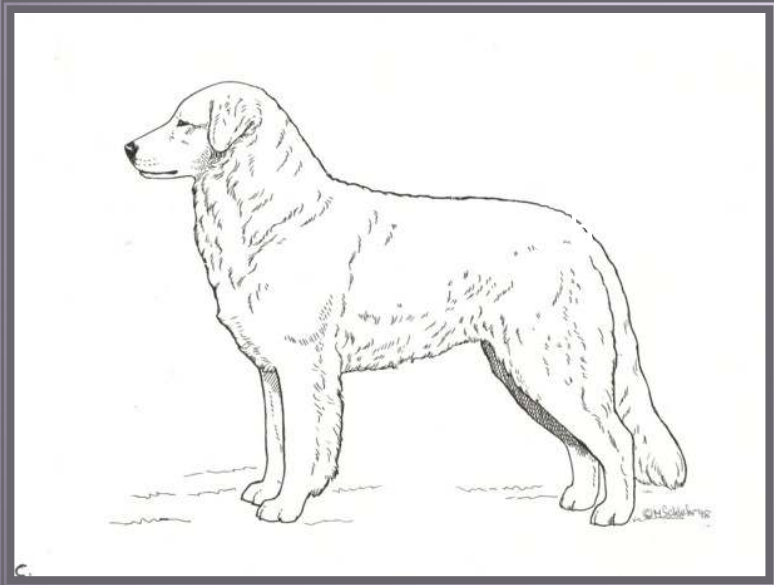
Size, Proportion & Substance

Height measured at the withers: dogs, 28 to 30 inches; bitches, 26 to 28 inches. Disqualifications: dogs smaller than 26 inches, bitches smaller than 24 inches. Weight: dogs approximately 100 to 115 pounds, bitches approximately 70 to 90 pounds. Trunk and limbs form a horizontal rectangle slightly deviated from the square. Bone in proportion to size of body. Medium, hard. Never heavy or coarse. Any tendency to weakness or lack of substance is a decided fault.

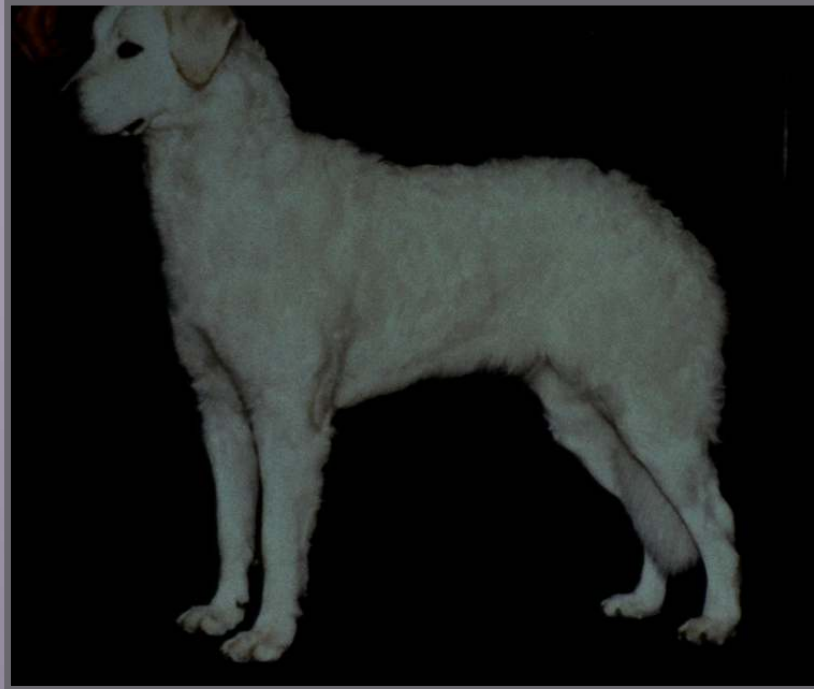
Size, Proportion & Substance



Size, Proportion & Substance



Proportion & Substance Faults



Square dog

Short legged, coarse



Head

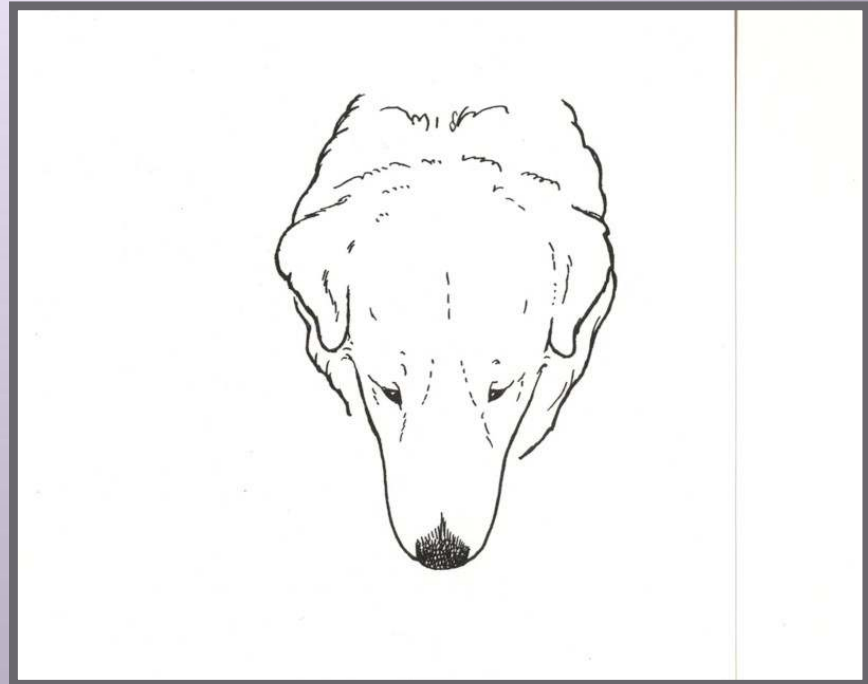


- Proportions are of great importance as the head is considered to be the most beautiful part of the Kuvasz. Length of head measured from tip of nose to occiput is slightly less than half the height of the dog at the withers. Width is half the length of the head.

Head

- Eyes almond-shaped, set well apart, somewhat slanted. In profile, the eyes are set slightly below the plane of the muzzle. Lids tight, haws should not show. Dark brown, the darker the better. Ears V-shaped, tip is slightly rounded. Rather thick, they are well set back between the level of the eye and the top of the head. When pulled forward the tip of the ear should cover the eye. Looking at the dog face to face, the widest part of the ear is about level to the eye. The inner edge of the ear lies close to the cheek, the outer edge slightly away from the head forming a V. In the relaxed position, the ears should hold their set and not cast backward. The ears should not protrude above the head.

Head – wedge shaped



- The skull is elongated but not pointed. The stop is defined, never abrupt, raising the forehead gently above the plane of the muzzle. The longitudinal midline of the forehead is pronounced, widening as it slopes to the muzzle. Cheeks flat, bony arches above the eye. The skin is dry.

Head

- Muzzle: length in proportion to the length of the head, top straight, not pointed, underjaw well developed. Inside of the mouth preferably black. Nose large, black nostrils well opened. Lips black, closely covering the teeth. The upper lip tight and not pendulous. Bite: dentition full, scissors bite preferred. Level bite acceptable.
- Disqualifications: overshot bite; undershot bite.

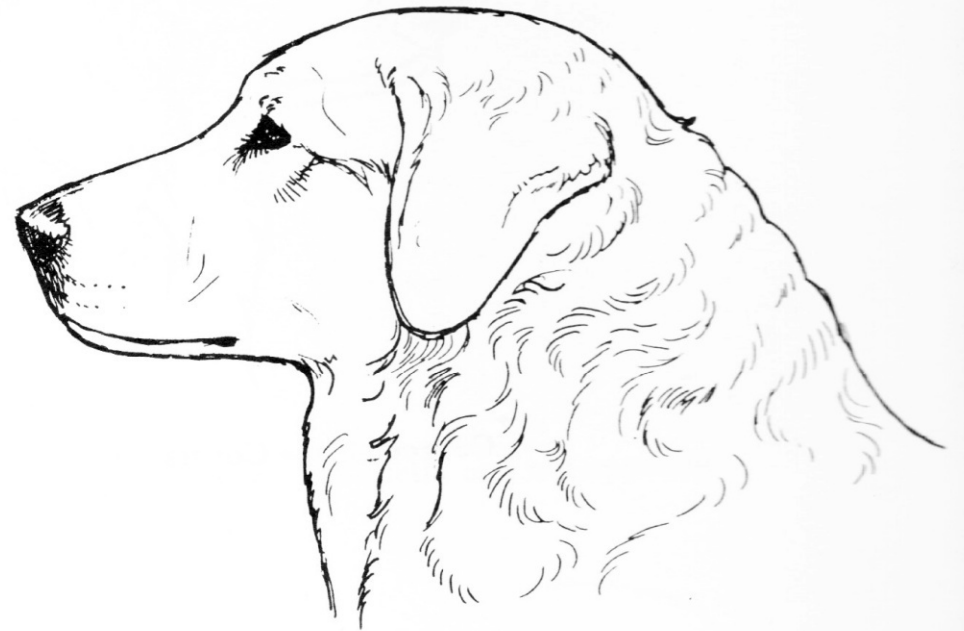
Correct head profiles



Comparison

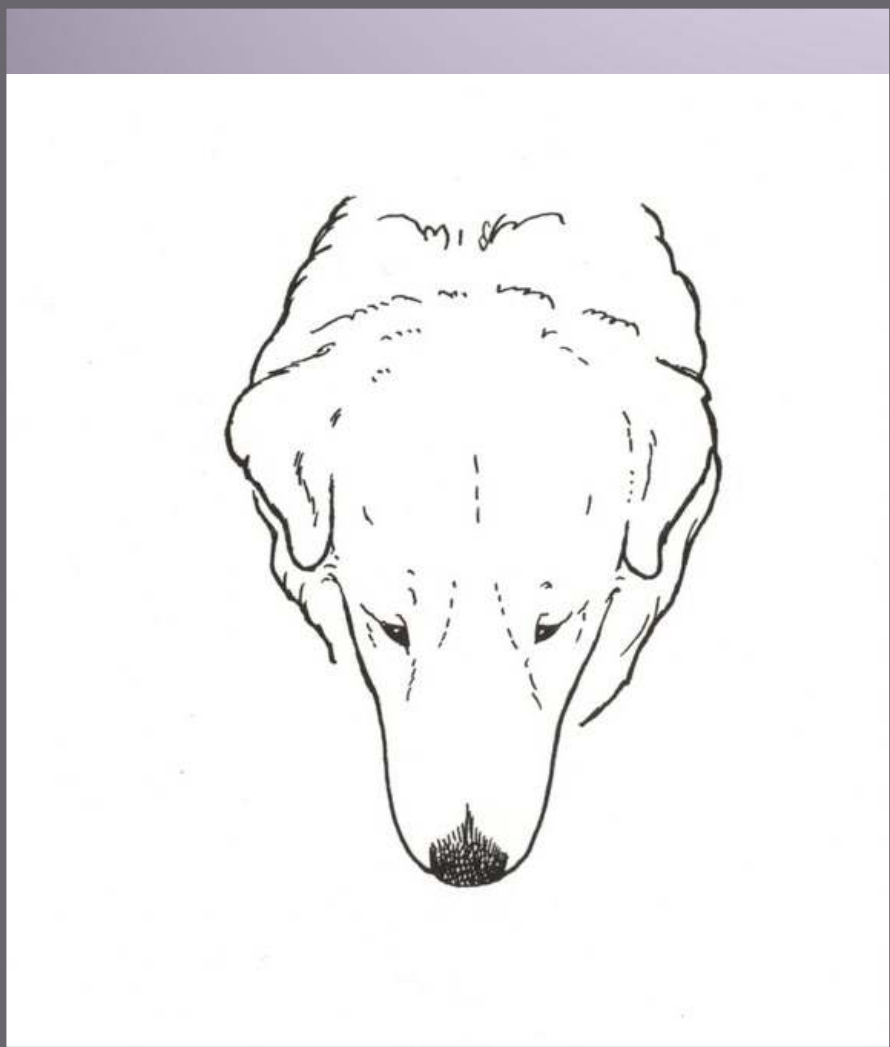


Great Pyrenees

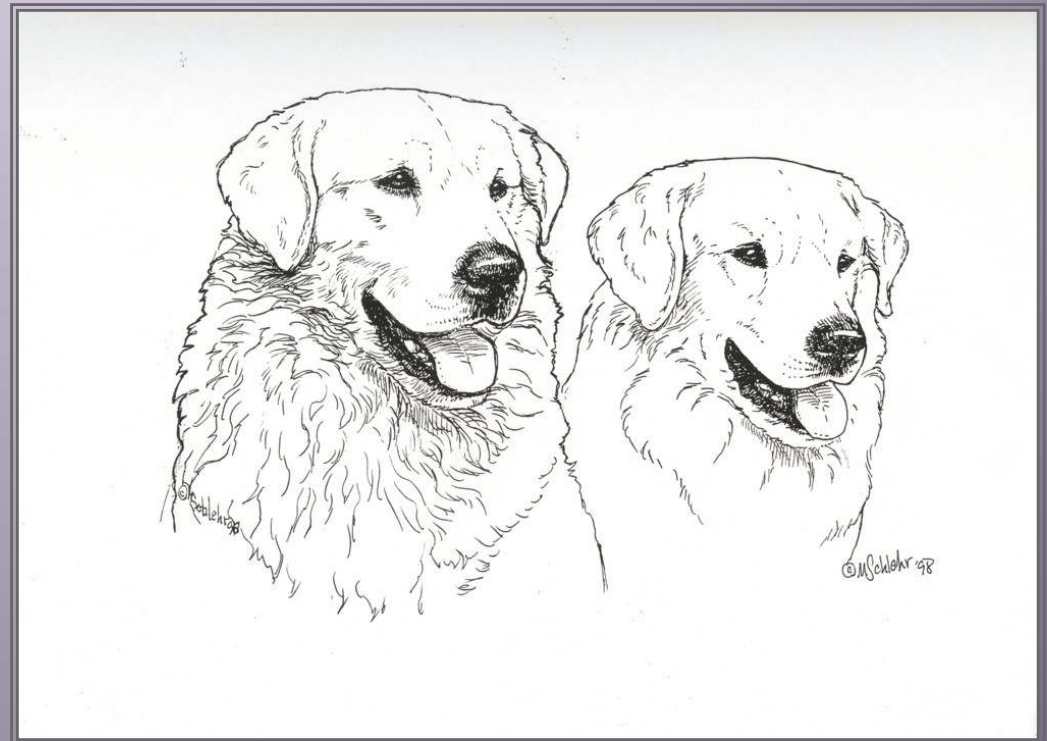
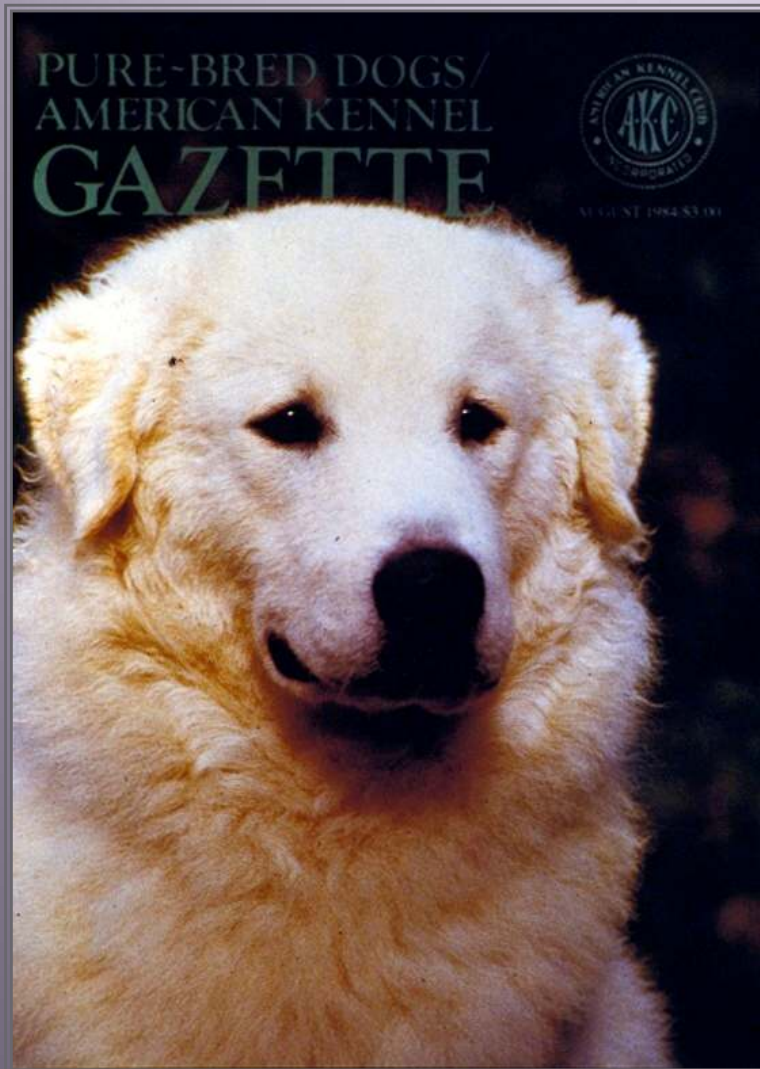


Kuvasz

Correct head from above



Correct heads from the front



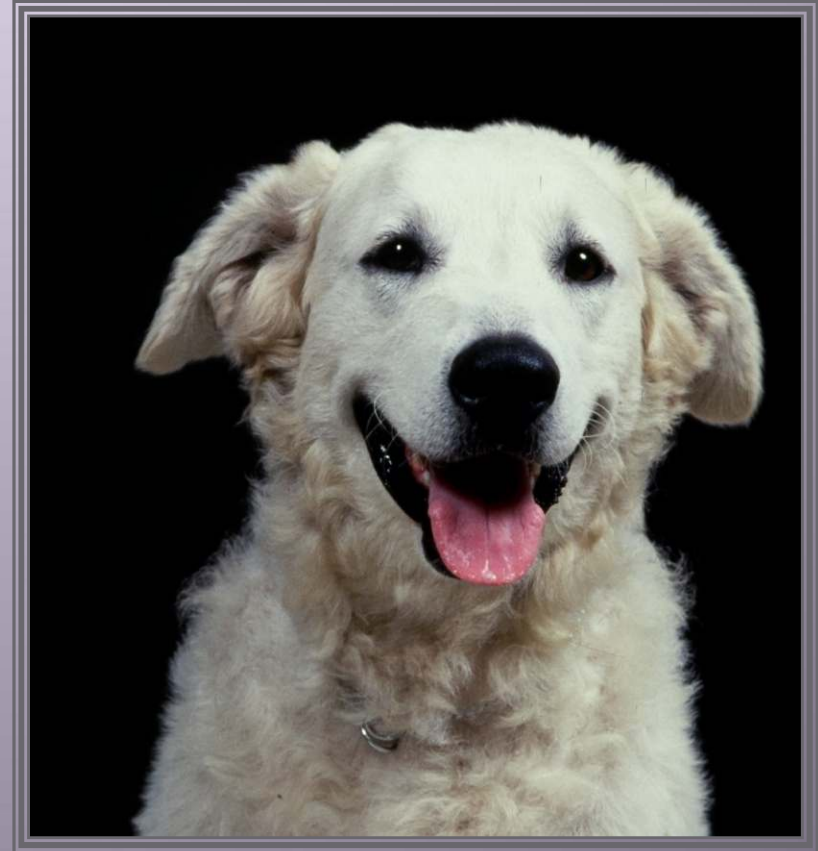
Eyes

- Almond Shaped



- Dark Pigment

The importance of proper ears



More on ears



More beautiful heads



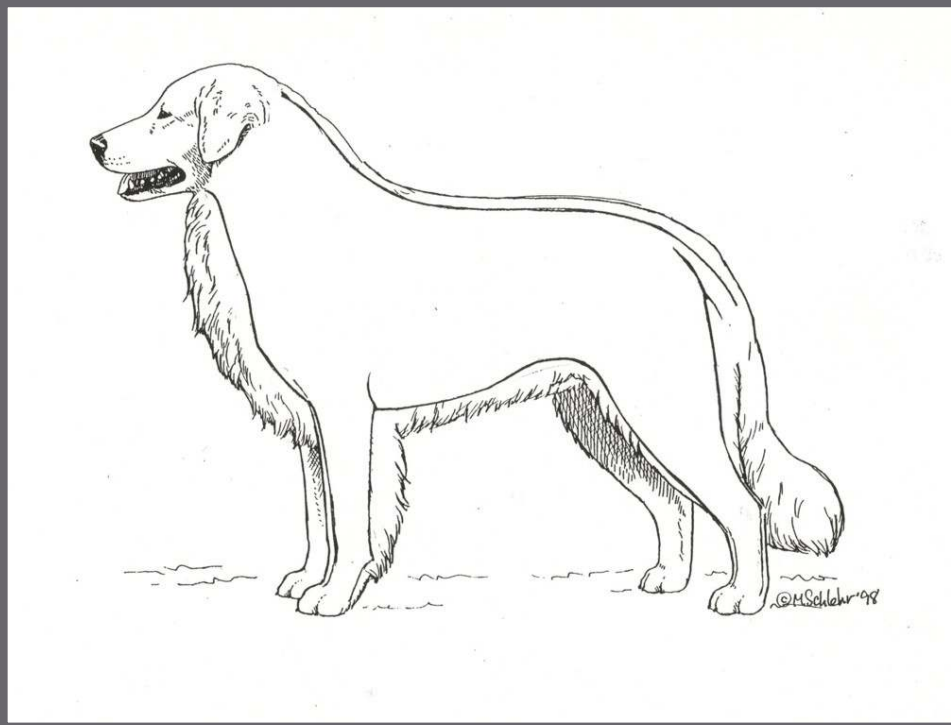
And two more



Neck, Topline, Body

- Neck muscular, without dewlap, medium length, arched at the crest. Back is of medium length, straight, firm and quite broad. The loin is short, muscular and tight. The croup well muscled, slightly sloping. Forechest is well developed. When viewed from the side, the forechest protrudes slightly in front of the shoulders. Chest deep with long, well-sprung ribs reaching almost to the elbows. The brisket is deep, well developed and runs parallel to the ground. The stomach is well tucked up.

Neck, Topline, Body



- Tail carried low, natural length reaching at least to the hocks. In repose it hangs down resting on the body, the end but slightly lofted. In state of excitement, the tail may be elevated to the level of the loin, the tip slightly curved up. Ideally there should not be much difference in the carriage of the tail in state of excitement or in repose.

A comparison



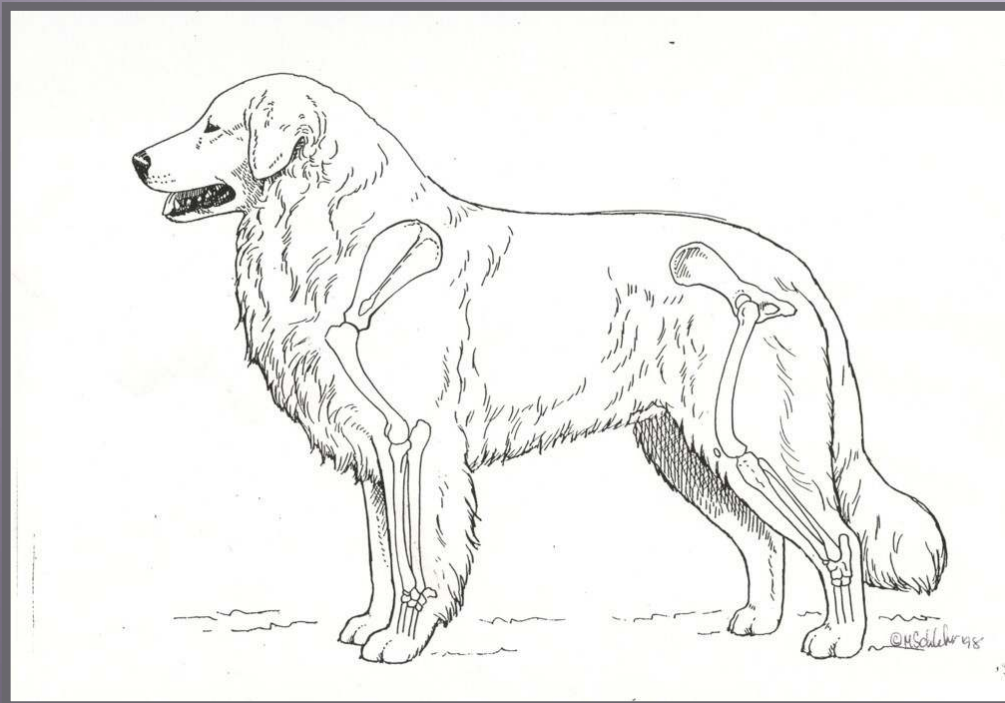
And one more



Forequarters

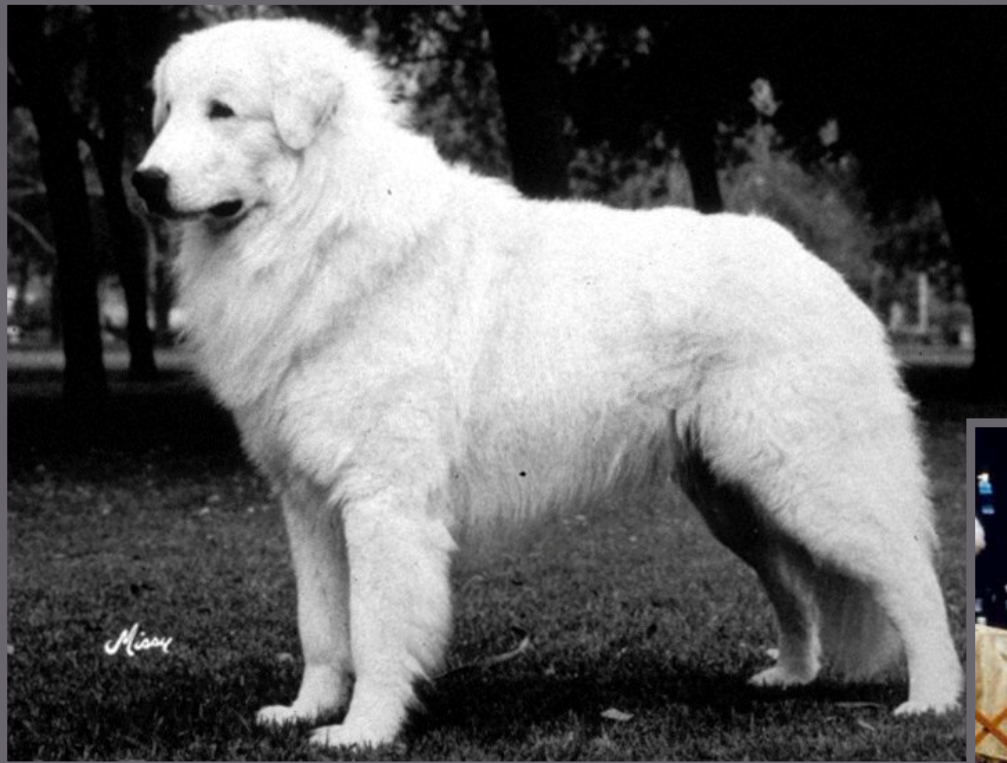
- Shoulders muscular and long. Topline-withers are higher than back. The scapula and humerus form a right angle, are long and of equal length. Elbows neither in nor out. Legs are medium boned, straight and well muscled. The joints are dry, hard. Dewclaws on the forelegs should not be removed. Feet well padded. Pads resilient, black. Feet are closed tight, forming round “cat feet”. Some hair between the toes, the less the better. Dark nails are preferred.

Hindquarters



- The portion behind the hip joint is moderately long, producing wide, long and strong muscles of the upper thigh. The femur is long, creating well-bent stifles. Lower thigh is long, dry, well muscled. Metatarsus is short, broad and of great strength. Dewclaws, if any, are removed. Feet as in front, except the rear paws somewhat longer.

Balance



Angulation



Feet



Coat

- The Kuvasz has a double coat, formed by guard hair and fine undercoat. The texture of the coat is medium coarse. The coat ranges from quite wavy to straight. Distribution follows a definite pattern over the body regardless of coat type. The head, muzzle, ears and paws are covered with short, smooth hair. The neck has a mane that extends to and covers the chest.

Coat

- Coat on the front of the forelegs up to the elbows and the hind legs below the thighs is short and smooth. The backs of the forelegs are feathered to the pastern with hair 2 to 3 inches long. The body and sides of the thighs are covered with a medium length coat. The back of the thighs and the entire tail are covered with hair 4 to 6 inches long. It is natural for the Kuvasz to lose most of the long coat during hot weather. Full luxuriant coat comes in seasonally, depending on climate. Summer coat should not be penalized.

Coat



Coat-wavy and straight acceptable



Puppy coats



Coat faults



Correct coat distribution



Color



- White. The skin is heavily pigmented. The more slate gray or black pigmentation the better.

Pigmentation

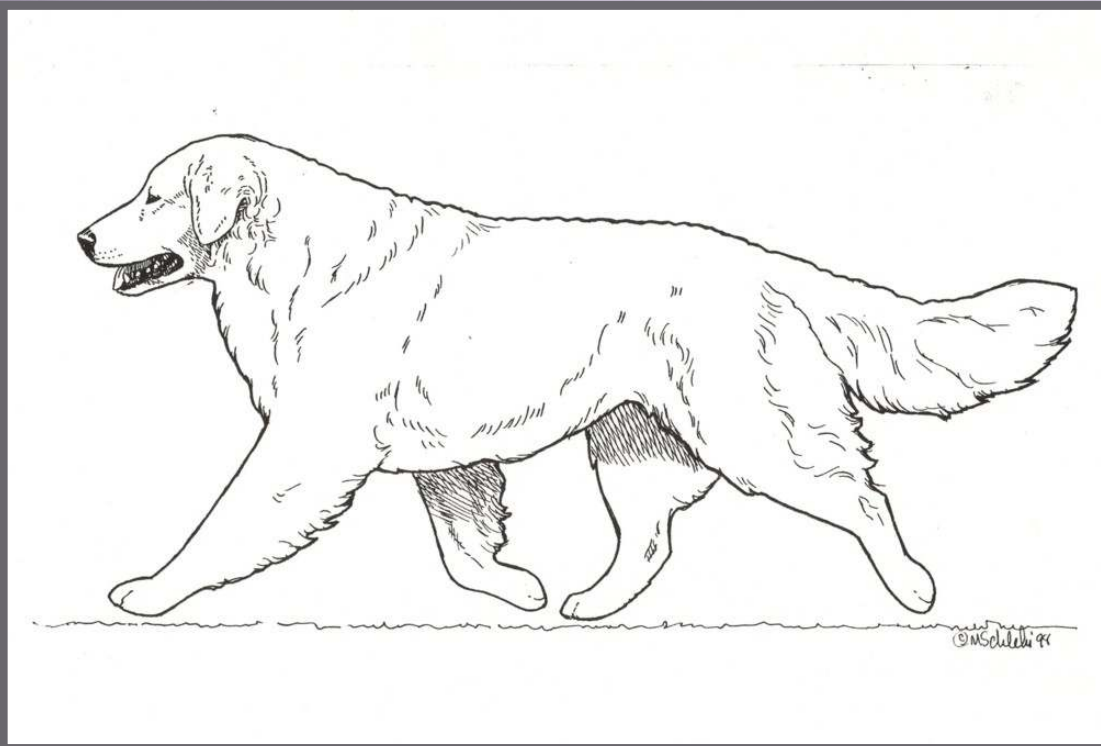


Color considerations



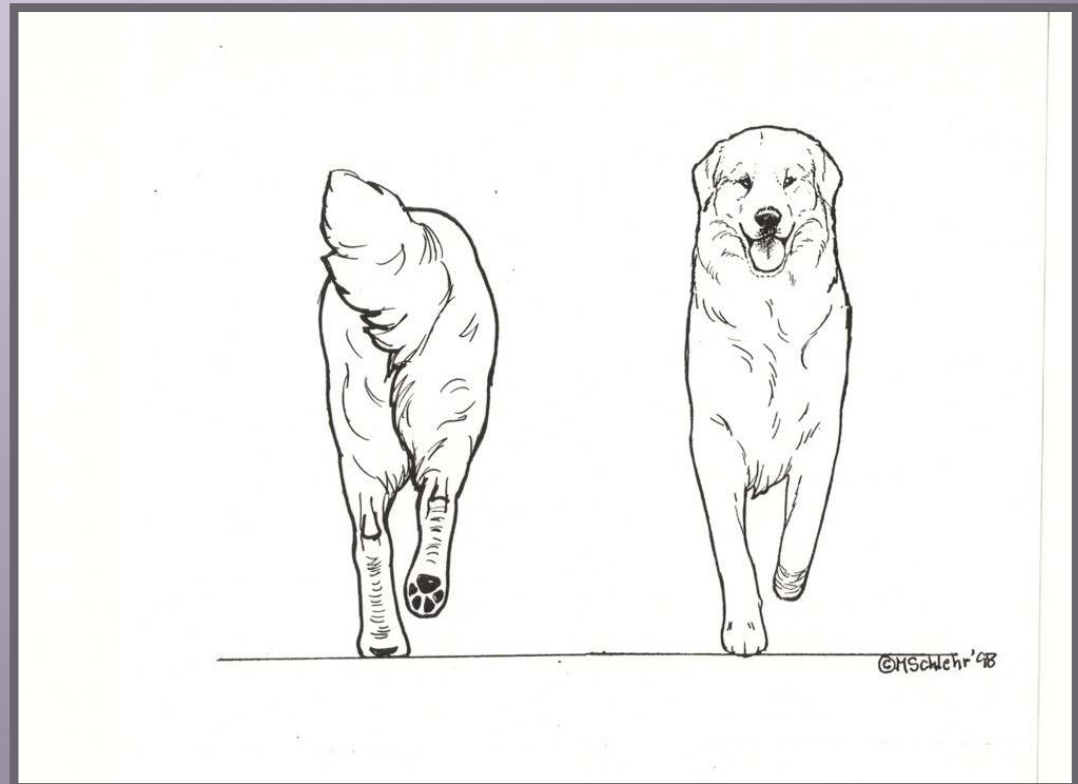
Gait

- Easy, free and elastic. Feet travel close to the ground. Hind legs reach far under, meeting or even passing the imprints of the front legs. Moving toward an observer, the front legs do not travel parallel to each other, but rather close together at the ground. When viewed from the rear, the hind legs (from the hip joint down) also move close at the ground.



Gait

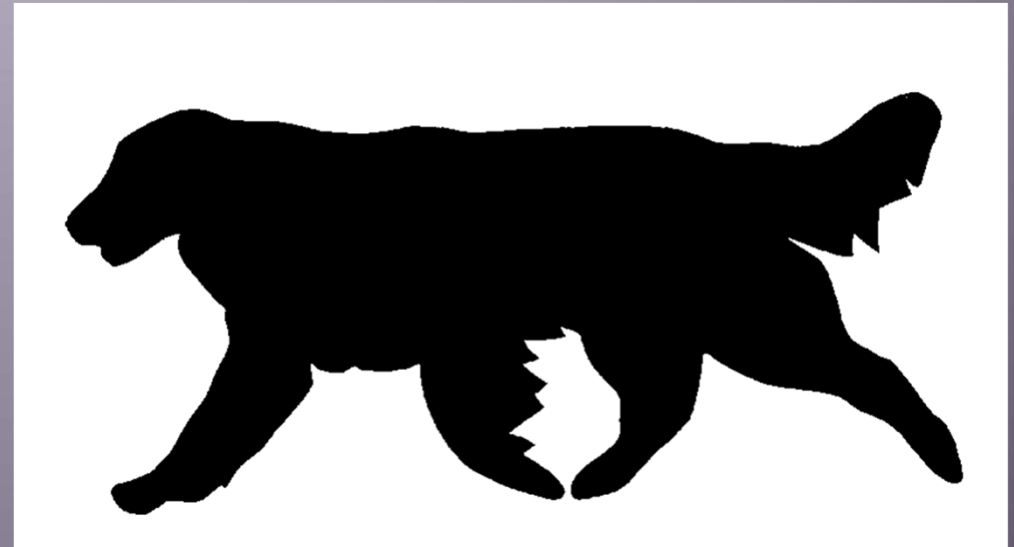
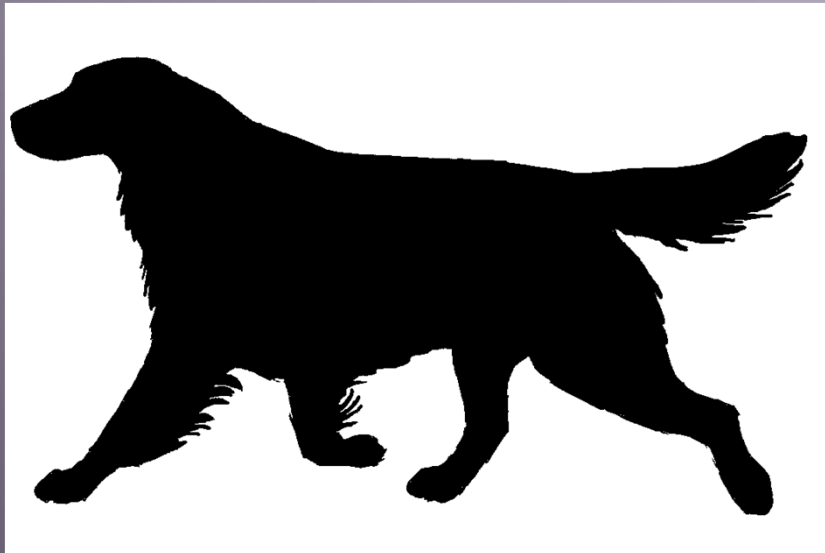
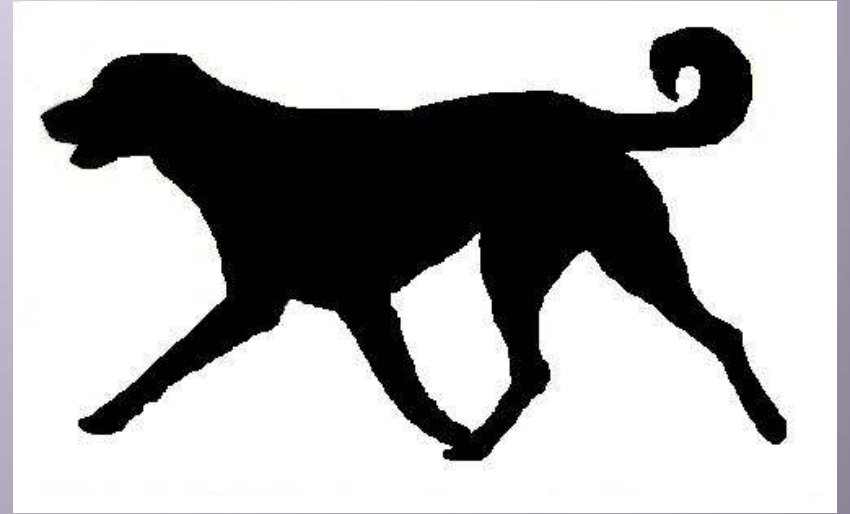
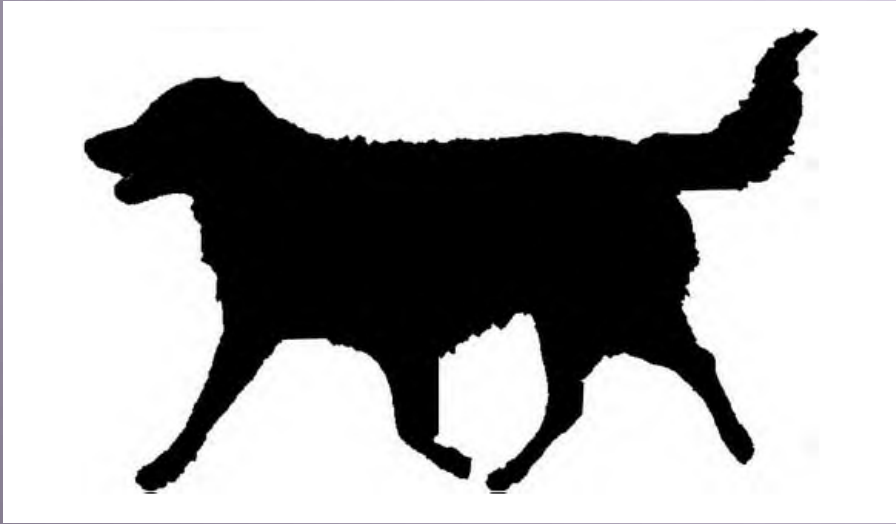
- As speed increases, the legs gradually angle more inward until the pads are almost single-tracking. Unless excited, the head is carried rather low at the level of the shoulders. Desired movement cannot be maintained without sufficient angulation and firm slimness of body.



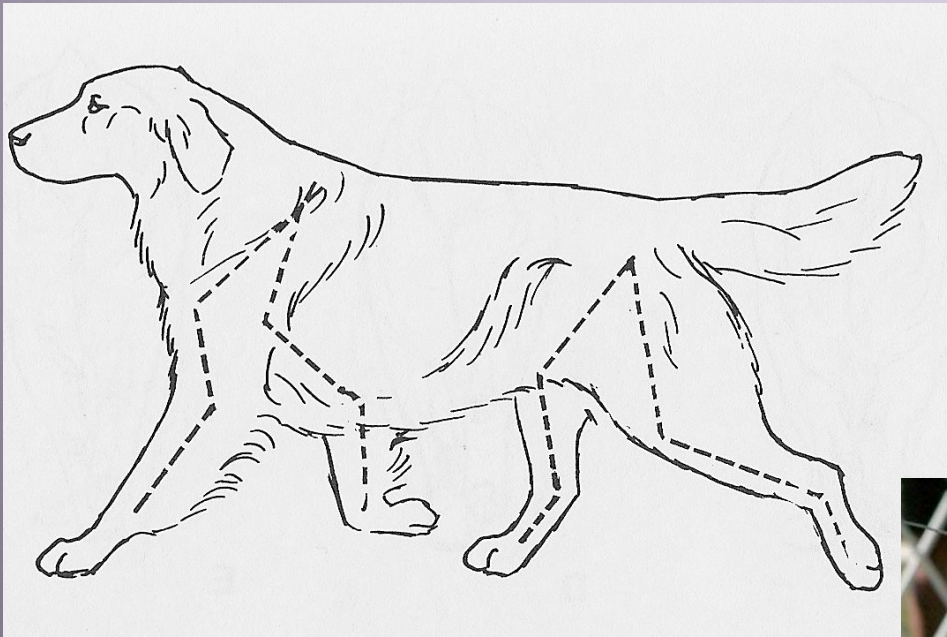
Gait



Gait Comparison



Proper Balance Allows for Proper Movement



Temperament

- A spirited dog of keen intelligence, determination, courage and curiosity. Very sensitive to praise and blame. Primarily a one-family dog. Devoted, gentle and patient without being overly demonstrative. Always ready to protect loved ones even to the point of self-sacrifice. Extremely strong instinct to protect children.

Temperament

- Polite to accepted strangers, but rather suspicious and very discriminating in making new friends. Unexcelled guard, possessing ability to act on his own initiative at just the right moment without instruction. Bold, courageous and fearless. Untiring ability to work and cover rough terrain for long periods of time. Has good scent and has been used to hunt game.

Excellent with children





Protective of people and flocks



Approach

- Do not change your method of judging
- However, approach from where the dog can see you
- Be aware of the dog's anxiety level
- Allow the handler to have control of the head before approaching
- It helps to talk to the handler prior to handling the dog
- Common sense
 - Floppy clothes
 - Hats
 - Dangling jewelry
 - Overpowering perfume or aftershave
- Please, if you are afraid of our breed, do not judge it
- Excuse a dog before you have to disqualify it

Disqualifications

- Overshot bite
- Undershot bite
- Dogs smaller than 26 inches
- Bitches smaller than 24 inches



Review















to by] Mr Marsh's fine team of Kuvasz shown at the Morris and Essex Show [Miss



Three generations of Kuvasz with their owner Miss M. E. Marsh of New Jersey.











Thank you for your attention!

