

# Judging the Labrador Retriever



Dr. Michael Woods

Claire White-Peterson

# History and Development



- Originated and developed as all purpose fisherman's dog in Newfoundland from dogs of colonists and fishermen
- 'fog, cod and dogs'
- Imported into England by aristocrats and 'kept pure as possible'

# History and Development



- Recognized KC  
1903/AKC 1931
- Last import from NL  
1932



**Stranger**



worldatlas

**NEWFOUNDLAND and LABRADOR**

LOW	HILLS	MTS



©GraphicMaps.com

# History Matters: Form Follows Function



- Waterdog (18,000 plus miles of coastline)
- ‘The Rock’
- Coat
- Versatility
- Temperament
- Weight

# Field vs Show



- English Labrador
- American Labrador
- Conformation  
Labradors same  
around the world





# Sandylands Tweed of Blaircourt



# Two Types in 1960's



# Essentials in Judging

- Outline
- Coat
- Tail
- Head
- Soundness
- Temperament









*Fischer*

# Outline

- Height to Length approx 1 to 1
- Withers to elbow / elbow to ground 1 to 1
- Chest approx to elbow
- Top line straight and level
- Good angles
- Short coupled
- Medium Sized
- Tail set off top line
- Good reach of neck
- Underline approx straight



# Coat

- Double coated: water & weather resistant
- Top coat short, straight (slight wave down back acceptable), hard to touch
- Undercoat soft, dense
- In-coat gives rounded appearance
- Colors: whole color black, yellow, chocolate (small white spot on chest permitted but not desirable)



# Fox Red Labrador



- This is a very old and traditional color, although not now seen as frequently
- Note acceptable lighter markings in coat

# Light Yellow



- Light yellow
- Even lighter is acceptable
- Note darker yellow on ears, and tip of tail
- Hocks, line down back will also often be darker

# Chocolate



- Chocolate can go from dark to light
- Choc when shedding can appear very ‘patchy’
- Should be able to tell texture of outer coat and presence of undercoat

# Tail: Distinctive Feature



- “Otter” Tail
- “Wrapped” Tail
- Round, short, thick
- Thick at base
- Tapering to tip
- Extension of top line
- Carried no more than 35 degrees off top line
- Not ‘bushy’

# Other Body Considerations



- Powerful rear
- Well turned stifle/hock
- Feet strong, compact
- Rear toes slightly behind point of rump

# Other Body Characteristics



- Good spring of ribs/not barrel
- Moderately wide chest
- Strong bone



© Reich



© Reich







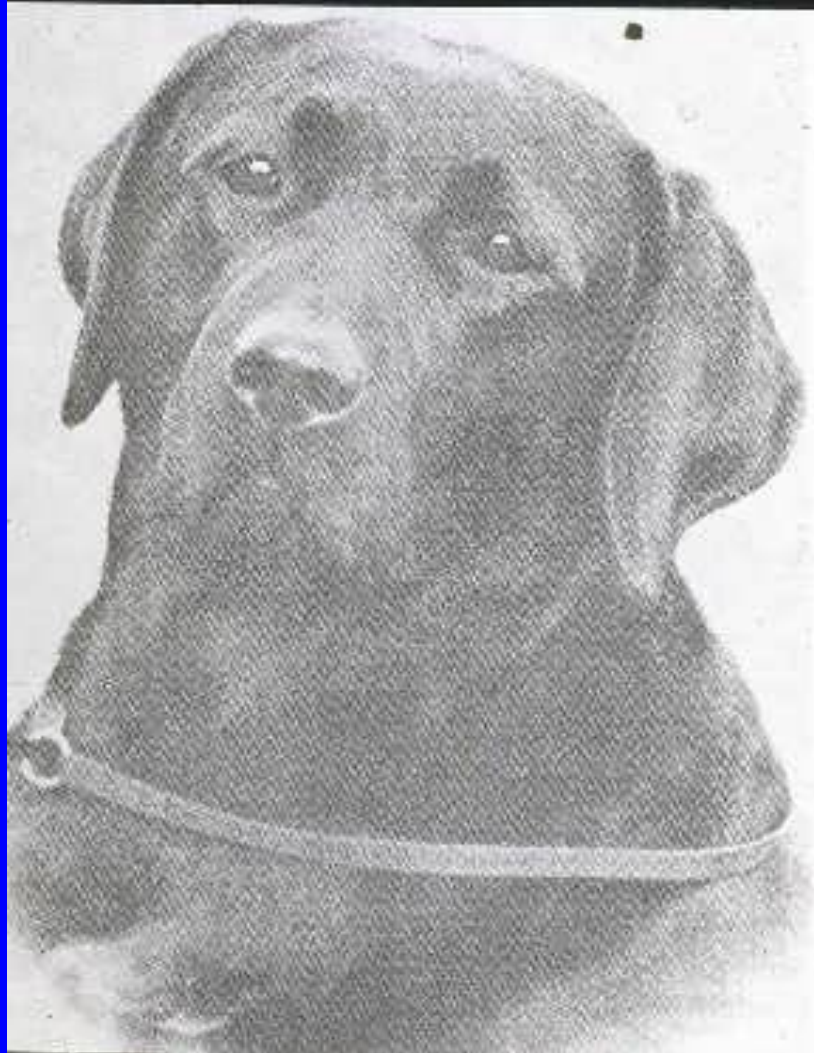


G. Huntzinger





# Head Essential Characteristic



- Head clean cut
- Skull wide, well developed
- Skull/muzzle 50/50 approximately
- Muzzle tapers slightly
- Moderate stop
- Parallel planes
- Clean 'dry' mouth

# Expression



- Eyes kind, friendly, intelligent expression
- Medium, set well apart
- Color: brown in black & yellow; brown/hazel in choc
- Eye rims black in black & yellow, brown in choc

# Head Features



- Nose well developed
- Jaws strong
- Ears close to head, set far back, not 'houndy'
- Teeth, scissors, level acceptable, full dentition preferred
- Over, under, misaligned, missing molars/pre-molars serious faults



# Standard Phrases

- Strong, well muscled body / compact
- Broad chest / powerful hindquarters
- Sturdy constitution
- Athletic / agile
- Medium sized / balanced
- Intelligent / willing, trainable mind

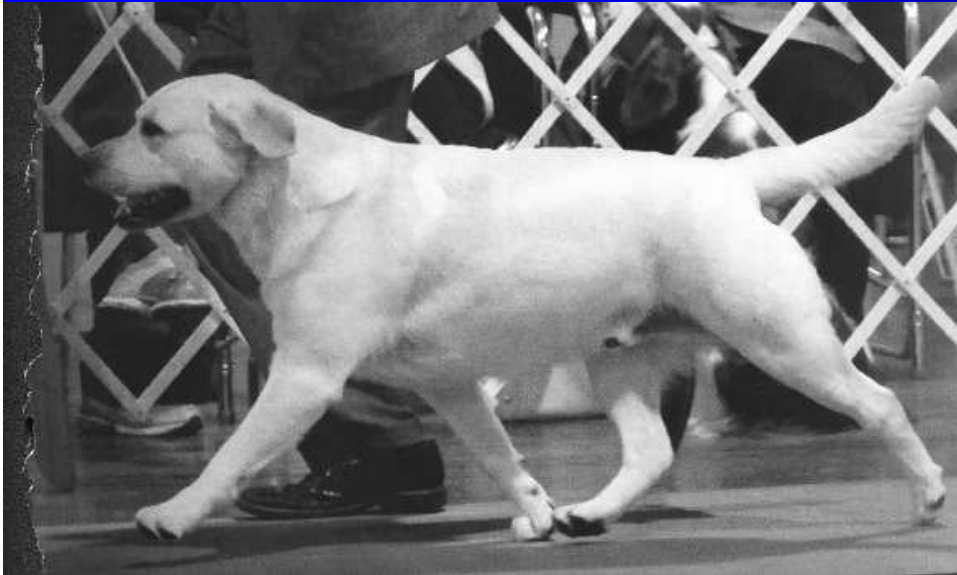


# Movement

- Free, effortless, powerful
- Not TRAD
- Not a setter or pointer



# Movement



- Capable of working all day with great bursts of speed
- Athletic

# Disqualifications



- A thoroughly pink nose or one lacking in any pigment
- Eye rims without pigment
- This does not mean ‘snow noses’ where pigment fades due to weather or age

# Fading Pigment Common



# Disqualifications



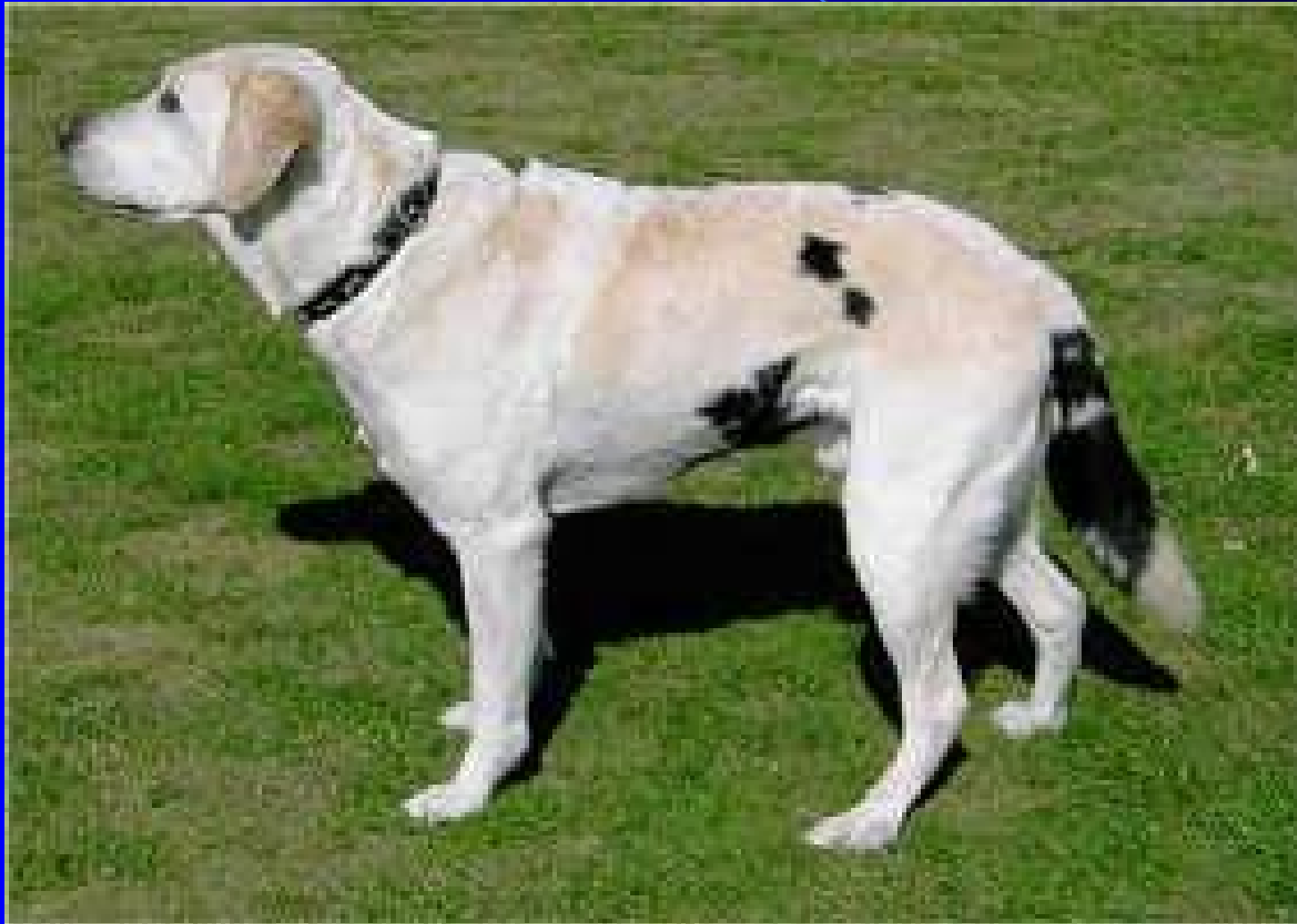
- Any deviation from the height prescribed
- Dogs 22.5 – 24.5
- Bitches 21.5 – 23.5
- Plus/minus .5
- Docking or altering carriage of tail
- Any color or combination other than 3 solid colors prescribed

# Mismark





# Mismark



# Temperament



- Most important breed essential
- Kindly, outgoing, tractable
- Intelligent, stable
- Eager to please, non-aggressive
- Do not tolerate temperament faults, severely penalize

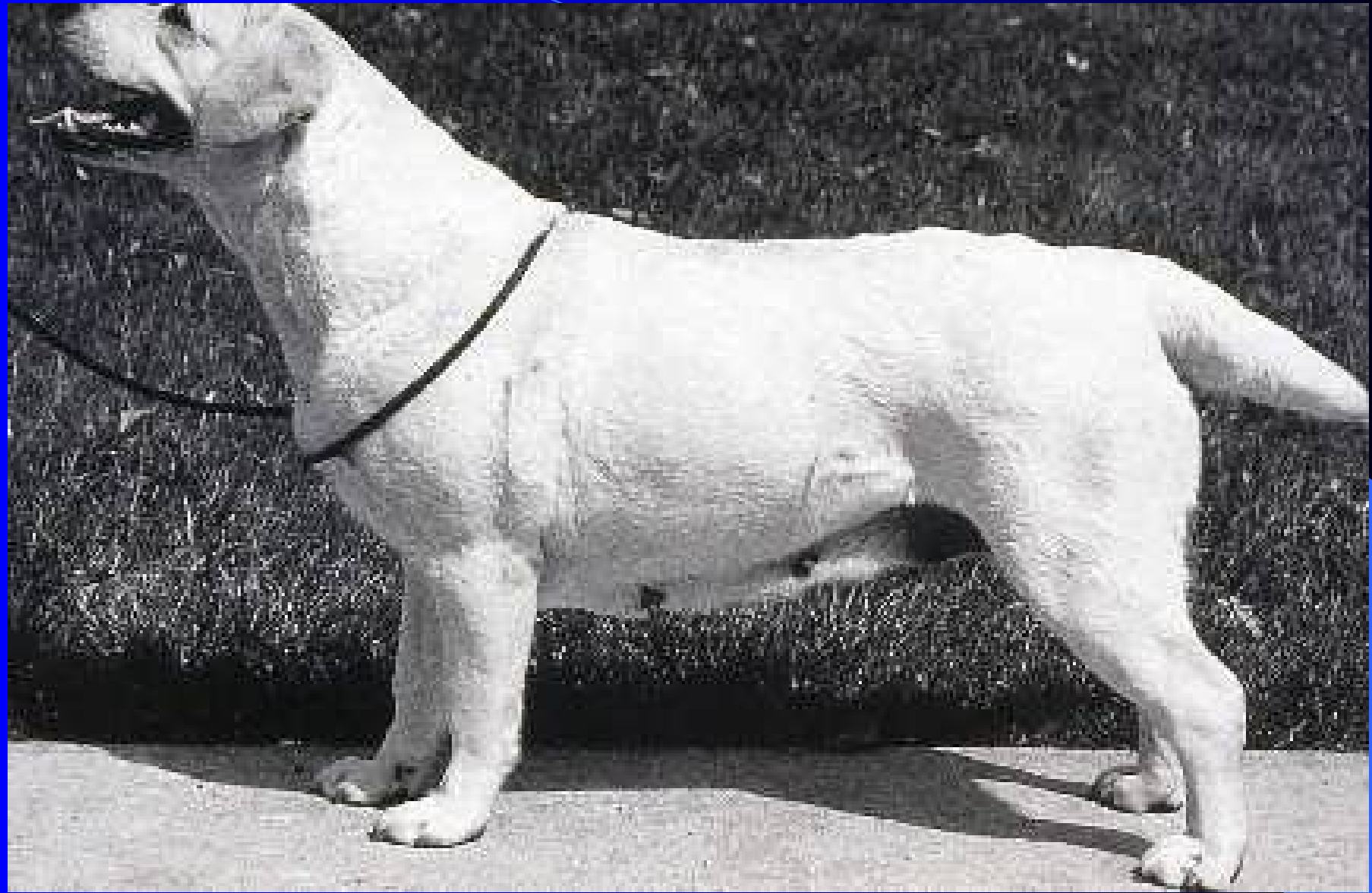
# Problems in the Breed

- Low on leg
- Too coarse heads/incorrect expressions
- Short upper arms
- Poor shoulder layback
- Low set tails
- Dippy top lines/rounded croups

# Weight and Substance

- The Kennel Club: Fit for Function
- Weight/substance
- AKC Standard weights
- Dogs 65 – 80 pounds
- Bitches 55 – 70 pounds



















# Arched loin / low set tail









© Reich





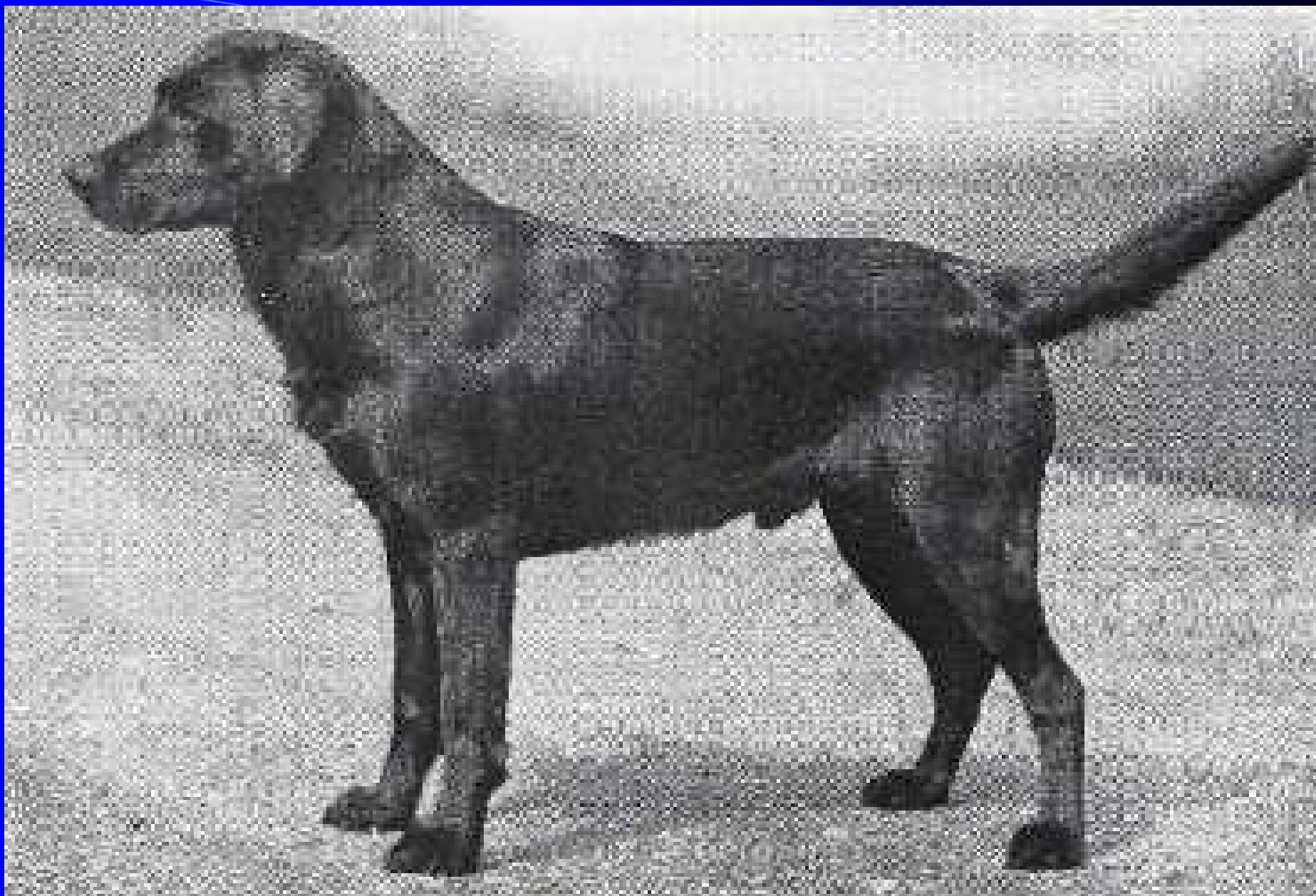




# Common Health Problems



- Hip/Elbow Dysplasia
- Retinal Dysplasia
- Progressive Retinal Atrophy
- Cataracts
- Allergies
- Osteochondritis Dissecans



DUAL CHAMPION IRAMSHAW BOB

















# RETRIEVER COMPARISONS

<p><u>Lab:</u></p> <p><b>Height: DQ</b> D: 22.5-24.5 (+/- .5) B: 21.5-23.5 (+/- .5)</p>	<p><u>Chesapeake:</u></p> <p><b>Height:</b> D: 23 – 26 B: 21 – 24</p>	<p><u>Golden:</u></p> <p><b>Height: DQ</b> D: 23-24 (+/- 1) B: 21.5-22.5 (+/- 1)</p>	<p><u>Flat:</u></p> <p><b>Height:</b> D: 23 – 24.5 B: 23 – 23.5 NO WEIGHT</p>
<p><b>Weight:</b> D: 65-80 lbs. B: 55-70 lbs.</p>	<p><b>Weight:</b> D: 65 – 80 lbs. B: 55 – 70 lbs.</p>	<p><b>Weight:</b> D: 65 – 75 lbs. B: 55 – 65 lbs.</p>	<p><u>Curly:</u></p> <p><b>Height:</b> D:25 – 27 B. 23 – 25 NO WEIGHT</p>