



A Pictorial Study of The Maltese

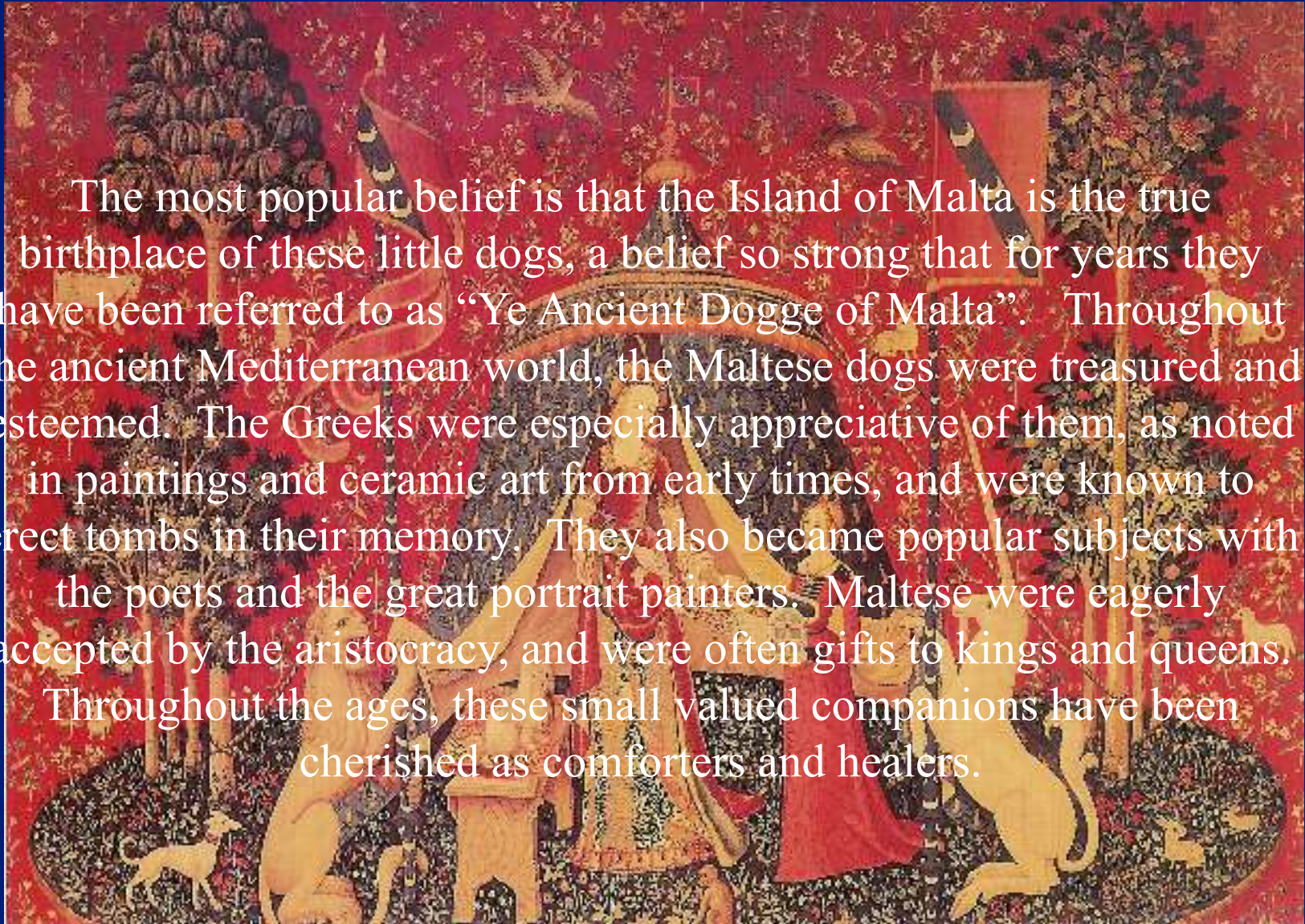
© 2004, The American Maltese Association, Inc.

This presentation may not be reproduced in whole or in part without the written permission of the American Maltese Association, Inc. “A Pictorial Study of the Maltese” is not to be used for any seminar or presentation other than one sponsored by the American Maltese Association, Inc.



History of the Breed

The most popular belief is that the Island of Malta is the true birthplace of these little dogs, a belief so strong that for years they have been referred to as “Ye Ancient Dogge of Malta”. Throughout the ancient Mediterranean world, the Maltese dogs were treasured and esteemed. The Greeks were especially appreciative of them, as noted in paintings and ceramic art from early times, and were known to erect tombs in their memory. They also became popular subjects with the poets and the great portrait painters. Maltese were eagerly accepted by the aristocracy, and were often gifts to kings and queens. Throughout the ages, these small valued companions have been cherished as comforters and healers.



“The Lady and the Unicorn” (1485) Tapestry, wool and silk
Made for Jean de Dinteville of Lyons by the Gobelins Tapestry Works in Paris



Maltese of the Past





The 5 Elements of Breed Type*

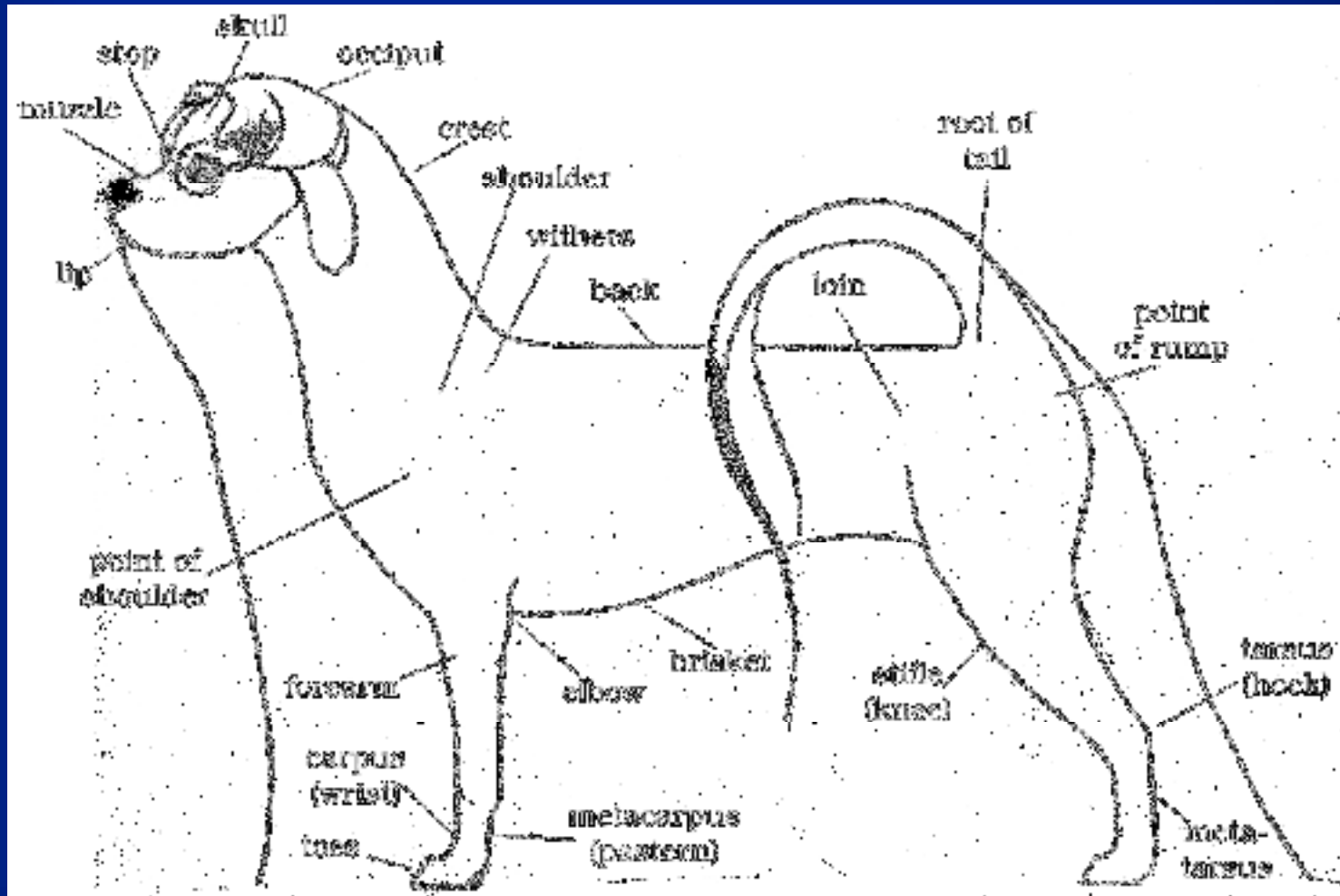
- **Breed Character**
- **Silhouette**
- **Head**
- **Movement**
- **Coat**

** Solving the Mysteries of Breed Type*

by Richard G. Beauchamp

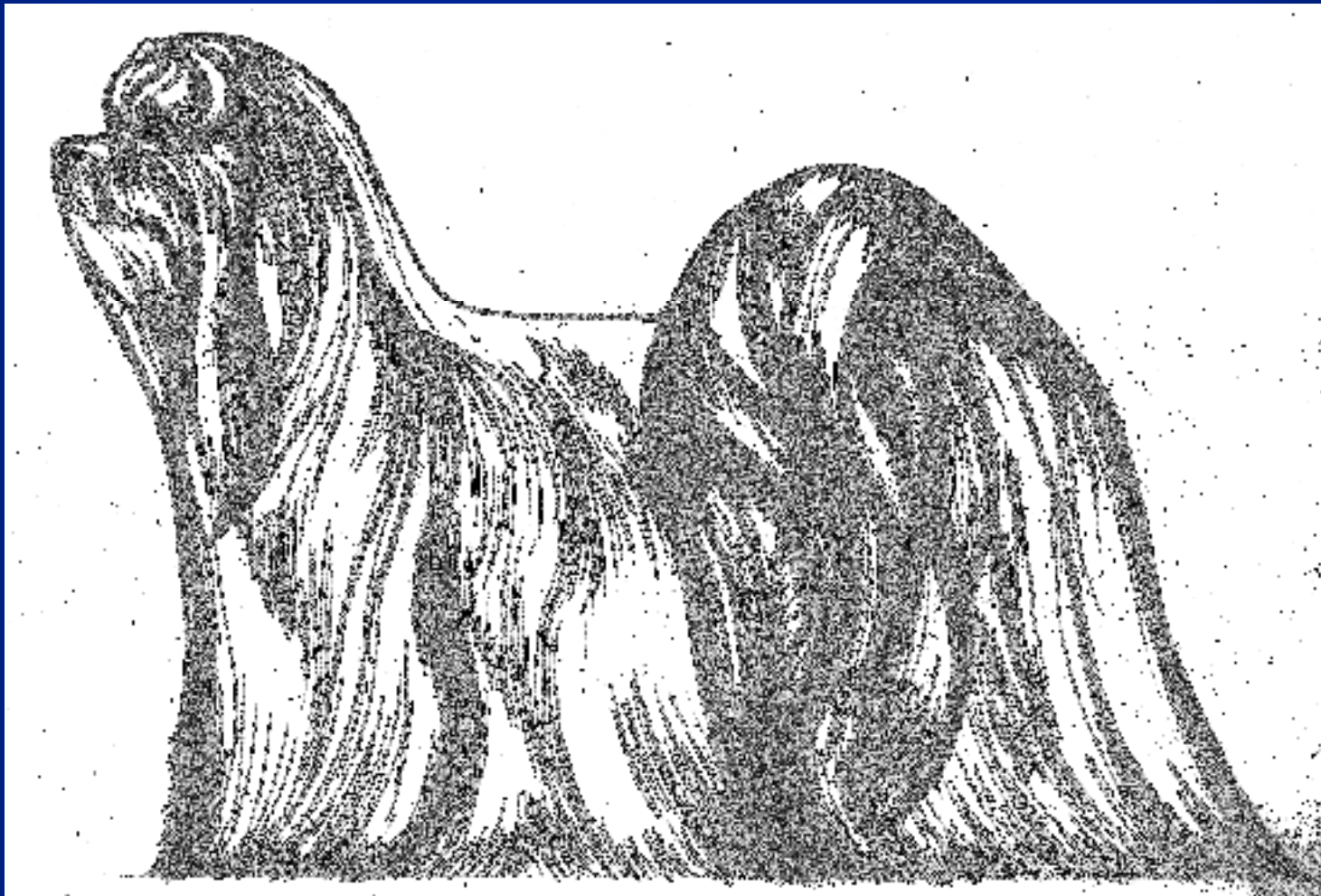


Anatomy





General Appearance



The Maltese is a toy dog covered from head to foot with a mantle of long silky white hair. He is gentle-mannered and affectionate, eager and sprightly in action, and, despite his size, possessed of the vigor needed for the satisfactory companion.



General Appearance





General Appearance



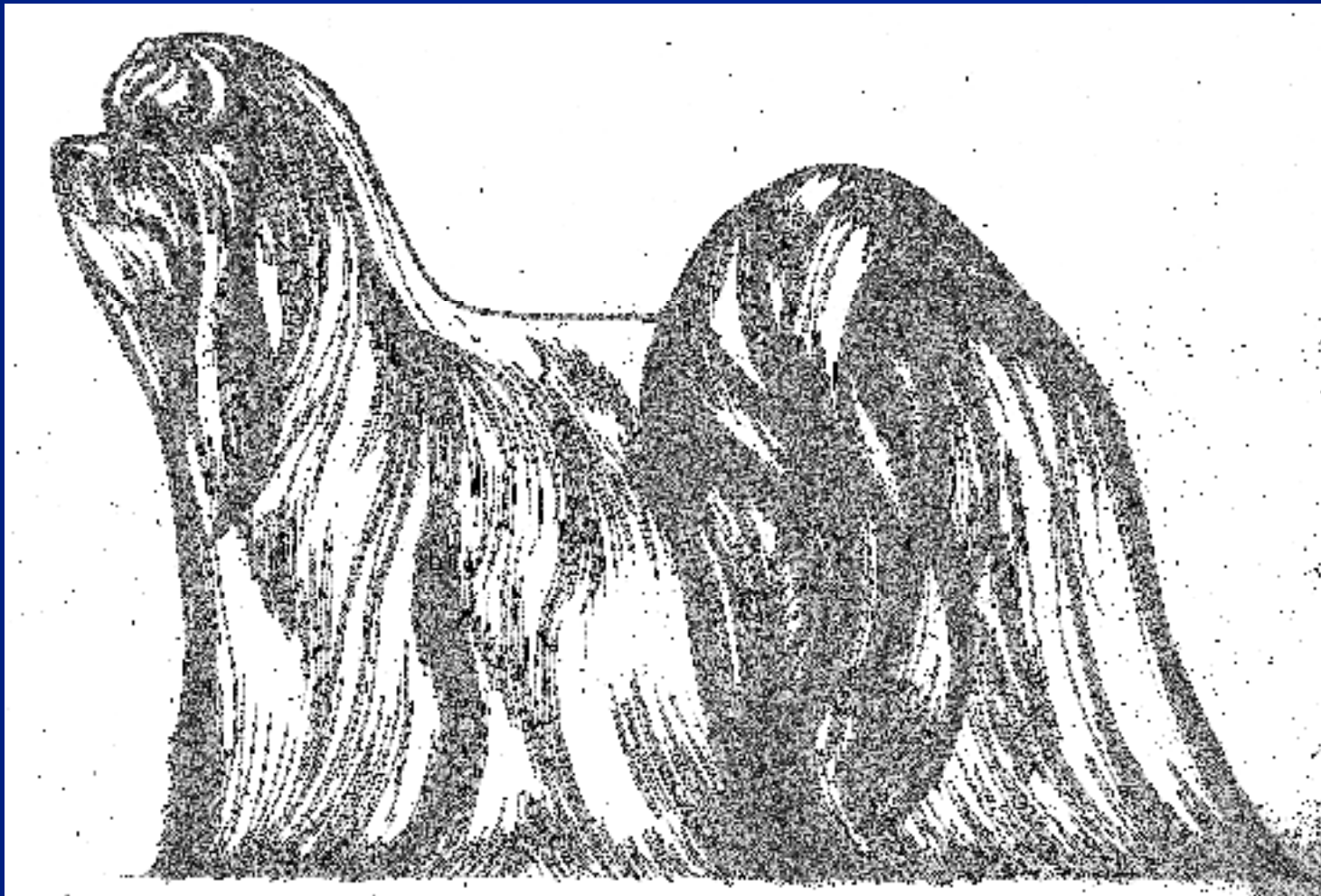


General Appearance





Silhouette





Silhouette





Head and Skull



Of medium length and in proportion to the size of the dog. *The skull* is slightly rounded on top, the stop moderate.



Balanced Heads





Head Pigmentation

Good Eye Rim/Nose Pigment

**Haloing on Skin around Eyes
NOT REQUIRED**





Ears

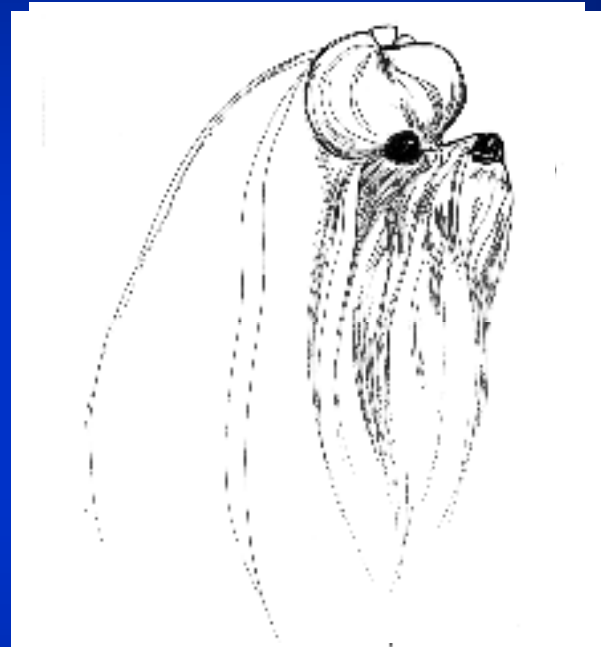
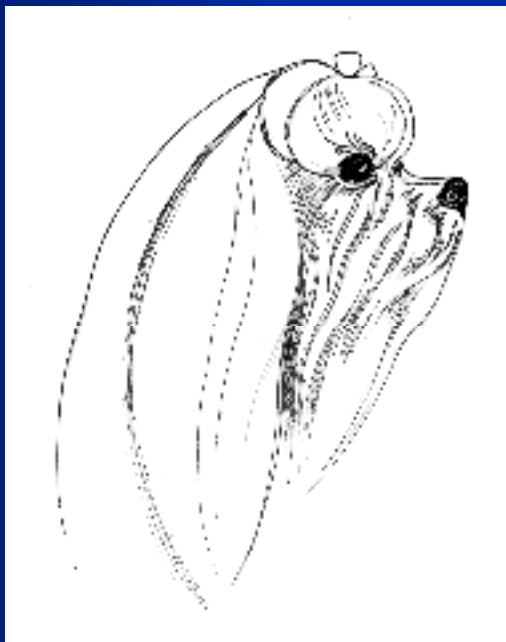


The drop ears are rather low set and heavily feathered with long hair that hangs close to the head.



Muzzle, Nose

Muzzle of Fine No Snipy



The muzzle is of medium length, fine and tapered but not snipy. *The nose* is black.



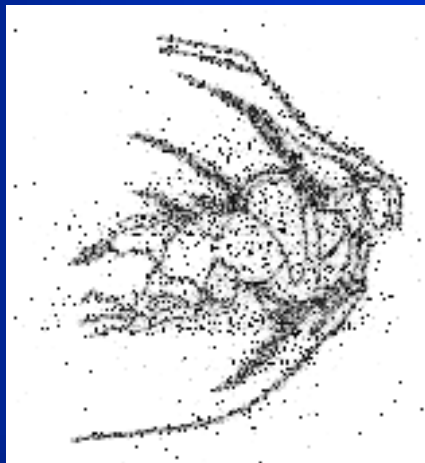
Teeth



Correct



Correct



Overshot



Undershot

The teeth meet in an even, edge-to-edge bite or in a scissors bite.



Examining the Bite



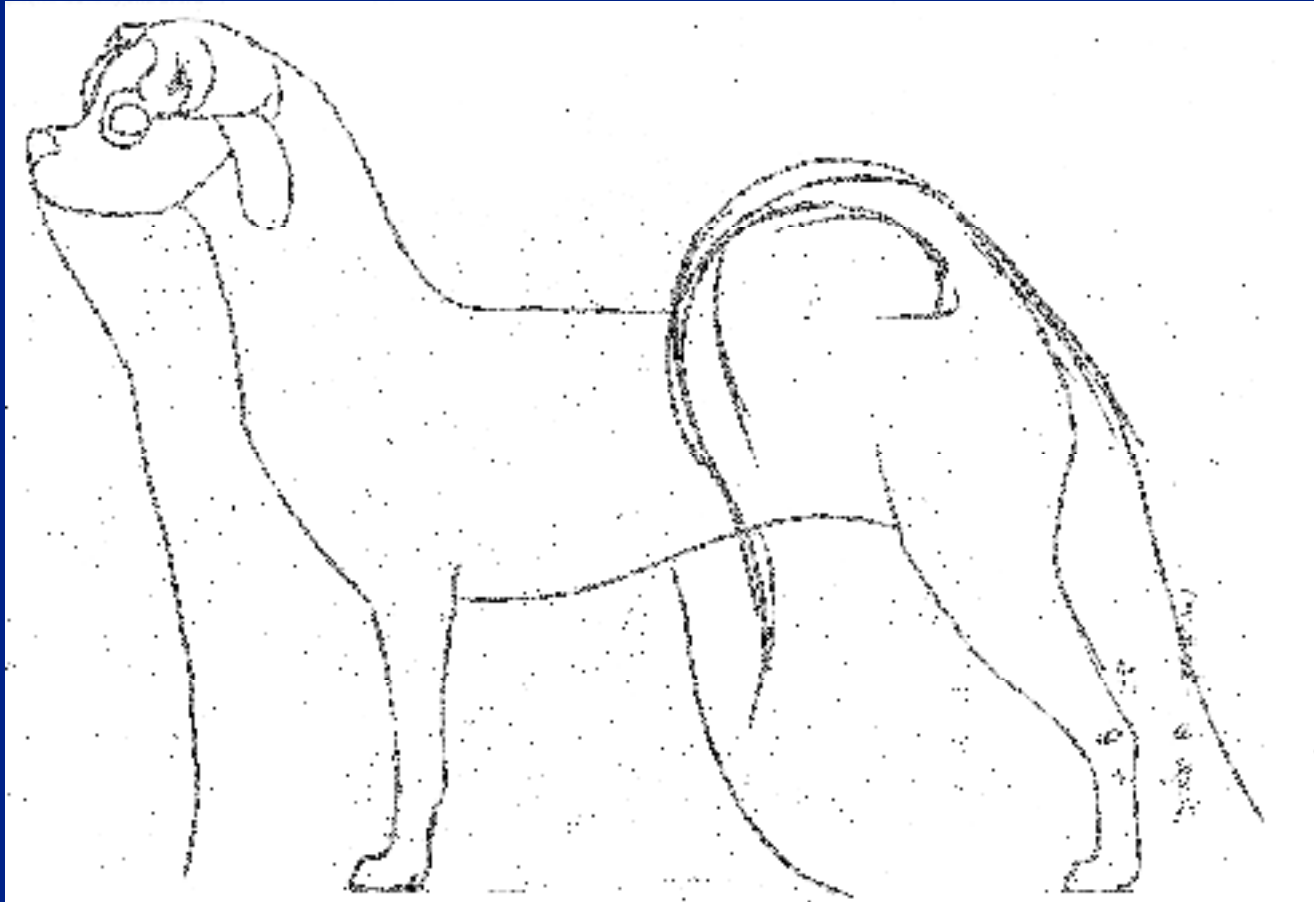


Examining the Bite





Neck



Sufficient length of neck is desirable as promoting a high carriage of the head.



Neck

Correct Length of Neck



Good Balance

Neck Too Short



Unbalanced - Extreme



Body

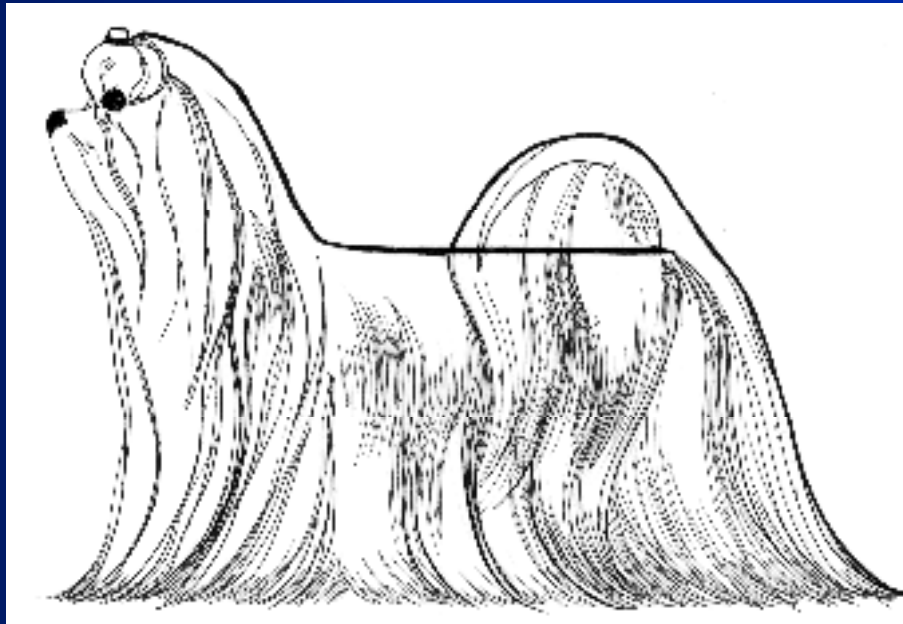


Compact, the height from the withers to the ground equaling the length from the withers to the root of the tail. Shoulder blades are sloping, the elbows well knit and held close to the body. The back is level in topline, the ribs well sprung. The chest is fairly deep, the loins taut, strong, and just slightly tucked up underneath.

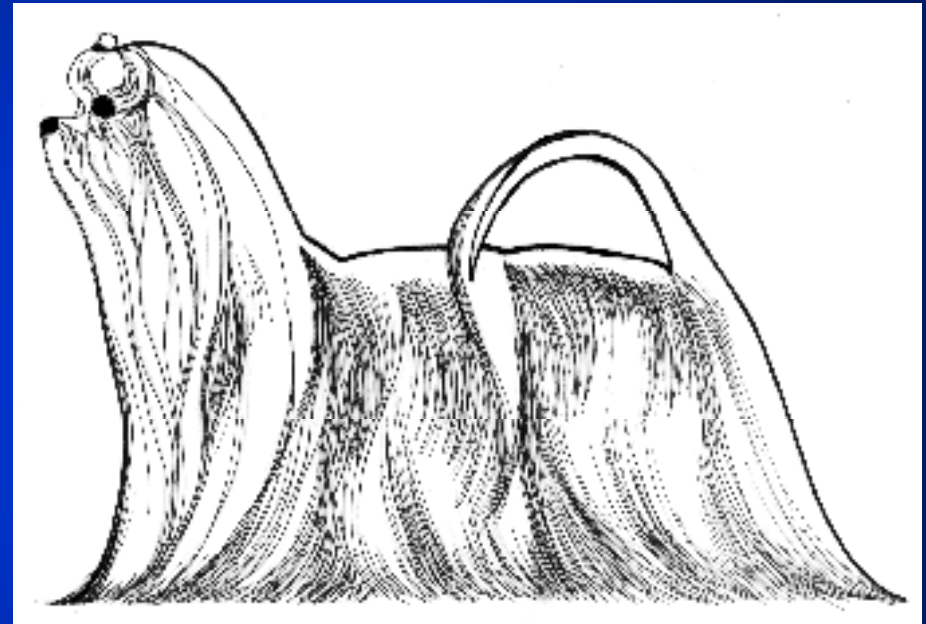


Toplines

Correct Topline



Slapped Topline

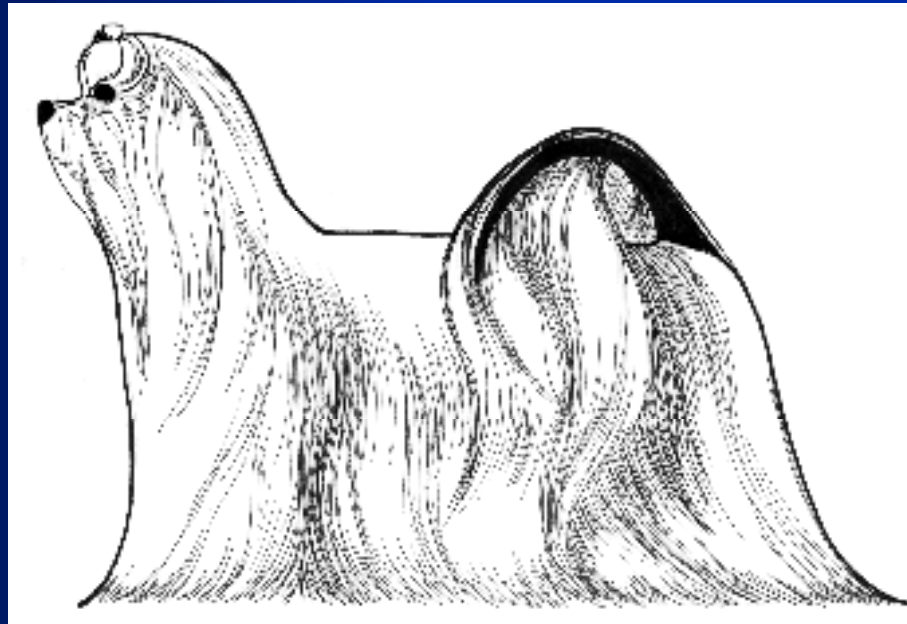


Compact, the height from the withers to the ground equaling the length from the withers to the root of the tail. Shoulder blades are sloping, the elbows well knit and held close to the body. The back is level in topline, the ribs well sprung. The chest is fairly deep, the loins taut, strong, and just slightly tucked up underneath.

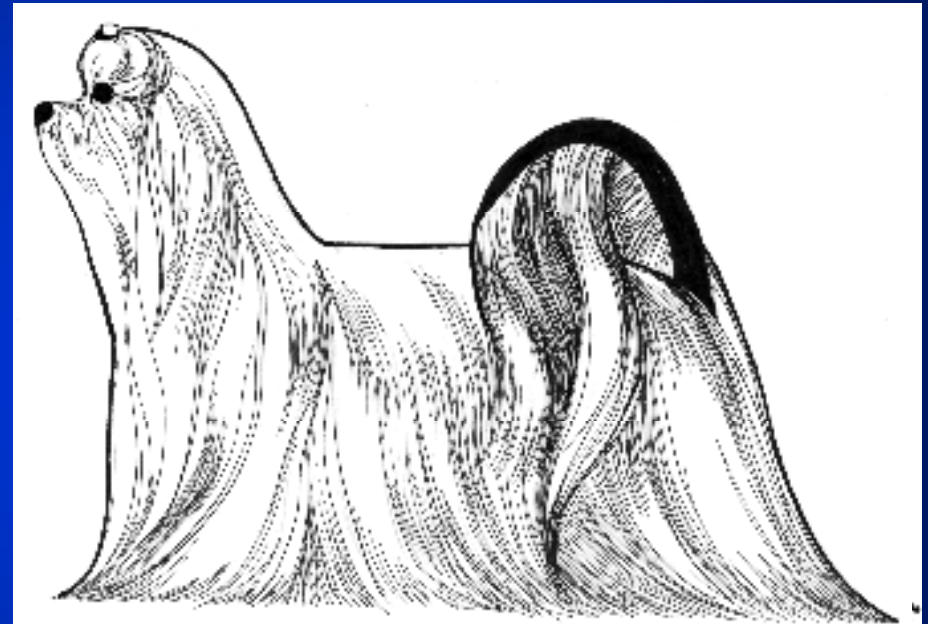


Tail

Correct Tail



Low Set Tail
Big Tail
(still not touching back)

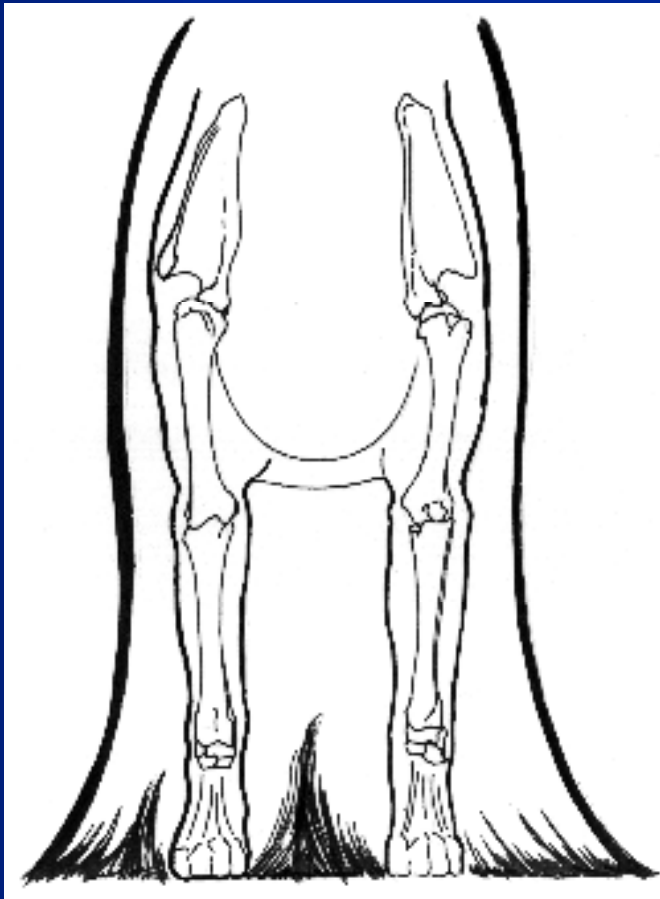


A long-haired plume carried gracefully over the back, its tip lying to the side over the quarter.

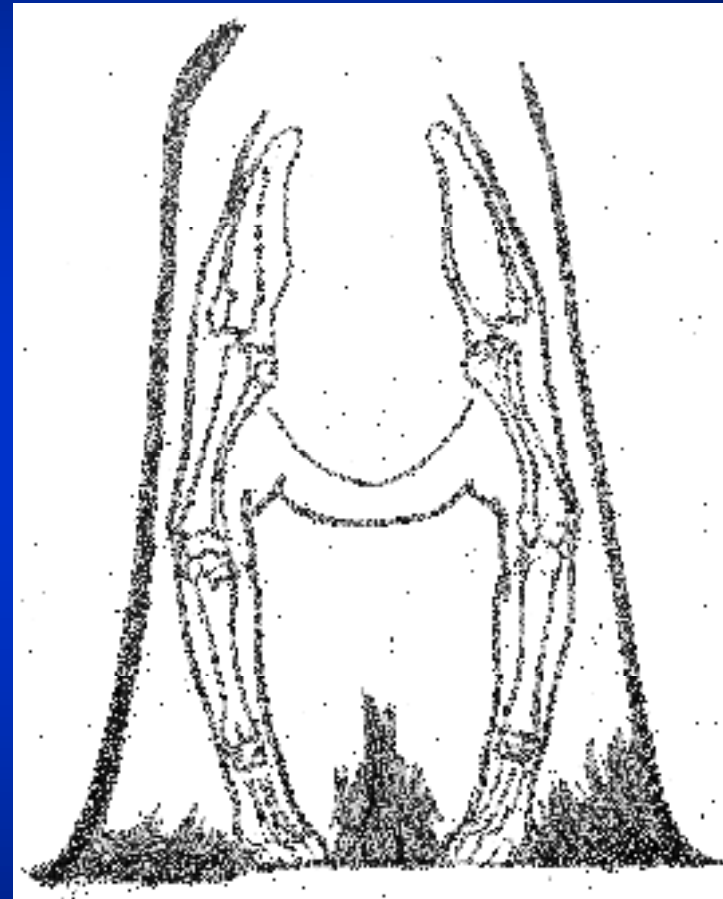


Legs and Feet

Correct Front



Correct Front



Legs are fine-boned and nicely feathered. Forelegs are straight, their pastern joints well knit and devoid of appreciable bend. Hind legs are strong and moderately angulated at stifles and hocks. The feet are small and round, with toe pads black. Scraggly hairs on the feet may be trimmed to give a neater appearance.



Checking the Toe Pads





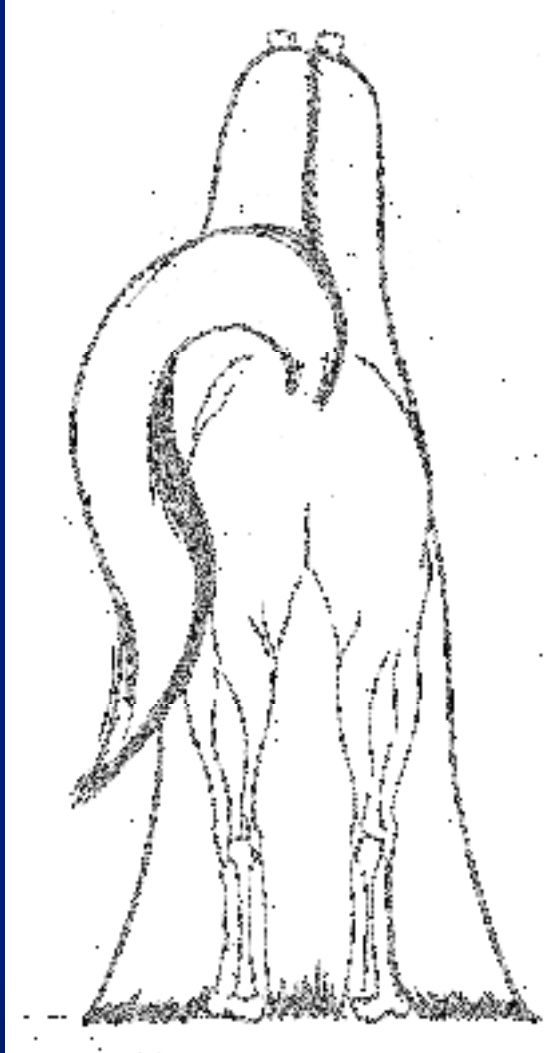
Checking the Toe Pads





Rears

Correct Rear



Narrow Rear





Rear Angulation

Correct



Too Straight





Coat and Color



The coat is single, that is, without undercoat. It hangs long, flat, and silky over the sides of the body almost, if not quite, to the ground. The long hair may be tied up in a topknot or it may be left hanging. Any suggestion of kinkiness, curliness, or wooly texture is objectionable. Color, pure white. Light tan or lemon on the ears is permissible, but not desirable.



Coat and Color





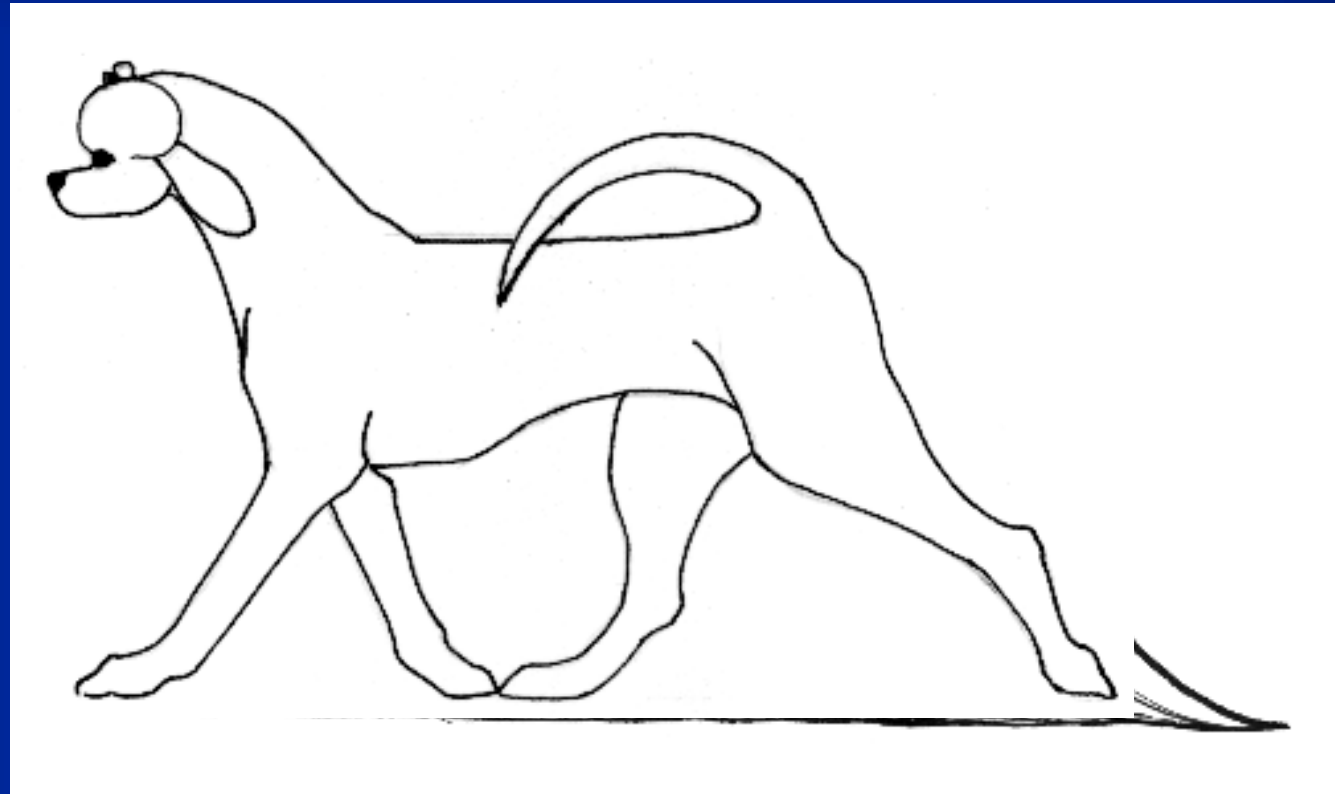
Size



Weight under 7 pounds, with from 4 to 6 pounds preferred. Over-all quality is to be favored over size.



Gait



The Maltese moves with a jaunty, smooth, flowing gait. Viewed from the side, he gives an impression of rapid movement, size considered. In the stride, the forelegs reach straight and free from the shoulders, with elbows close. Hind legs to move in a straight line. Cowhocks or any suggestion of hind leg toeing in or out are faults.



Gait



Gait



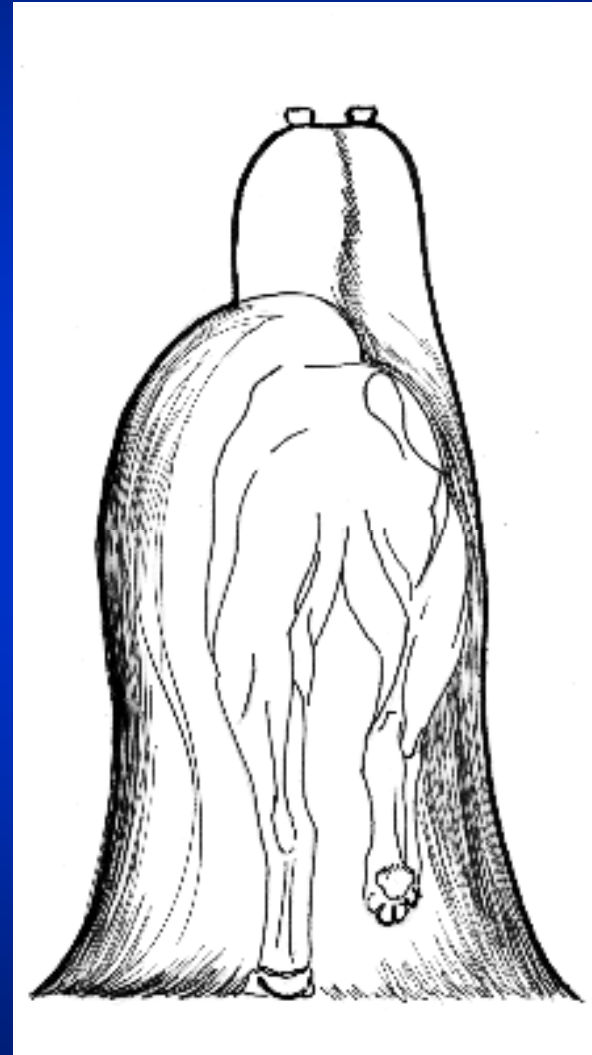
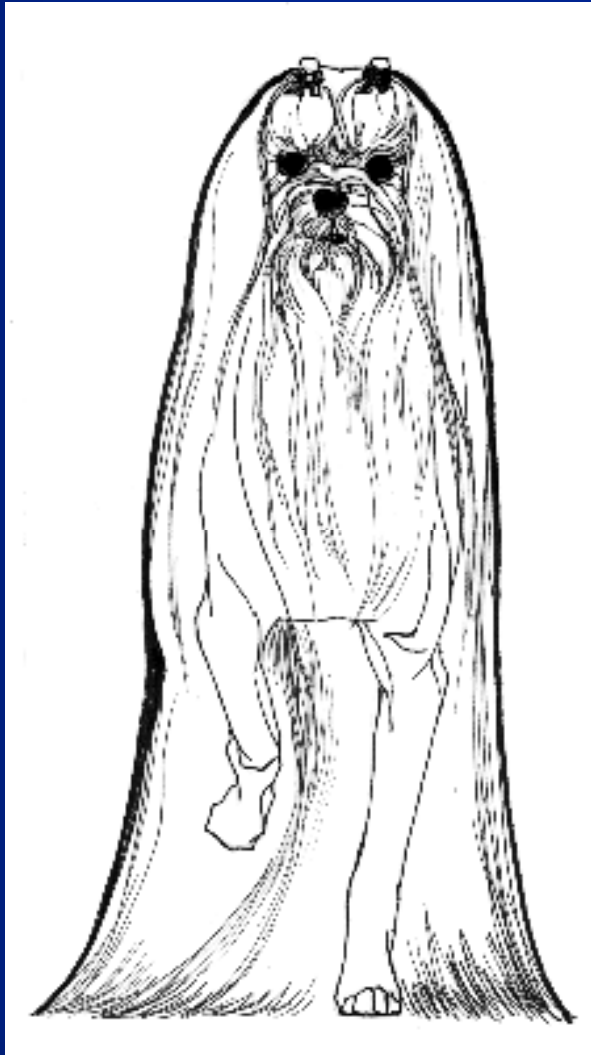


Gait





Correct Front & Rear Movement





Breed Character



For all his diminutive size, the Maltese seems to be without fear. His trust and affectionate responsiveness are very appealing. He is among the gentlest mannered of all little dogs, yet he is lively and playful as well as vigorous.



Breed Character





See You at the Shows!

