



Russian Toy



The Russian Toy is a small, elegant, lively dog with long legs, fine bones and lean muscles. They are active and cheerful, possessing keen intelligence and a desire to please. This breed loves to snuggle and be close to their human companions, although sometimes slightly aloof to strangers. They are neither cowardly nor aggressive.

The Russian Toy is a toy breed with a lineage that dates back to the Russian aristocracy. In general, he is a good-natured imp that loves to run and play. They will dash through the house or yard chasing toys as long as you can keep up, while many others are willing to do nothing more than lounge in your lap all day long, content in knowing that they are the prize jewel in your home. They thrive on human companionship and will let you know if they are feeling neglected. Their coat is either semi-long or smooth. The longhaired variety carries a nice ruff on the chest and unique feathering on the extremities, tail and ears. Long-coated Russian Toys will not have an adult coat until it is more than a year old and full fringing not until three years of age. The smooth-coated variety is sleek and smooth to the touch. There is also a slight attitude difference between the two varieties. Smooth Coats tend to be a little more terrier-like than Long Coats. However, both share a larger-than-life personality.



Russian Toy

Judges' Education

History of the Breed

The Russian Toy Dog began in the 18th century when the English Toy Terrier arrived in Russia.

Socialites adored these tiny terriers due to their small size and lively temperament and it became stylish to appear with them at the opera and social events. In the 20th century, the number of English Toy Terriers in Russia had grown considerably, and they began referring to them as the Russian Toy Terrier.



Princess Dagmara (above) became the wife of Russian Emperor Alexander III in 1866. And this photo was taken before the marriage.

History (continued)

Then in 1958, whether a mutation or the introduction of another unknown small breed, a unique long coated puppy was born to two smooth coated parents and became the progenitor of the modern day long coat variety.

In the 1980's, the new standard declared that the *Moscow Long Haired Toy Terrier* and the *Russian Toy Terrier* were in fact two varieties of a single breed.

Eventually the word terrier was dropped from the breed's name and they are now referred to as the Russian Toy dog with both **long** and **smooth coat varieties**.



E. F. ZHAROVA (above two photos)
The Creator of the Long-Haired Russkiy Toy Breed
*We commemorate her with respect ...
*Thanks a lot Irina Samsonova and Marina Izhitsa
*Evgenia Fominichna Zharova 1921-1996

General Appearance

A small elegant dog, lively, long-legged, with fine bone and lean muscles.

Sexual dimorphism only slightly defined.

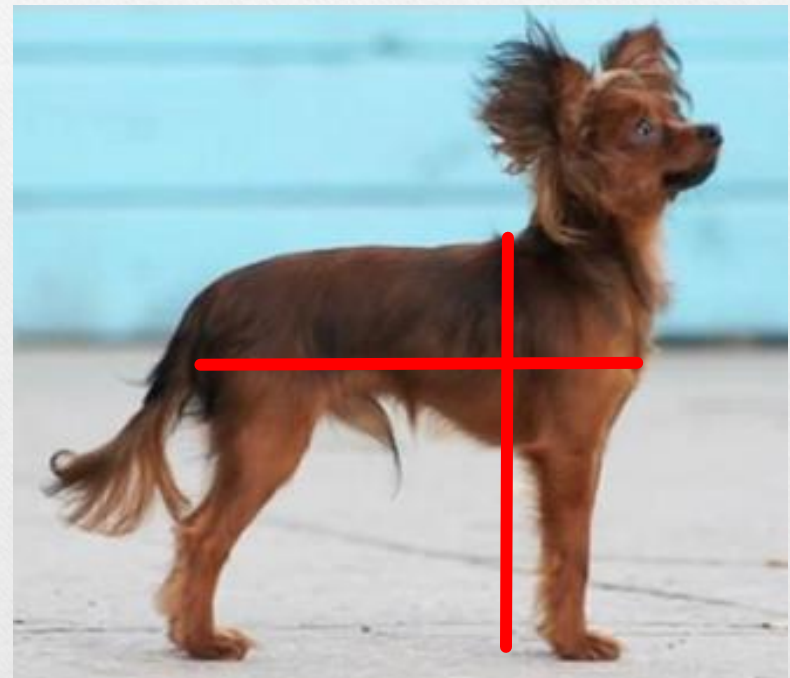
Active, cheerful, possessing keen intelligence, slightly aloof to strangers but neither cowardly nor aggressive.



Size, Proportion, Substance

The Russian toy has a **square build**; the height, when measured vertically from the ground to the highest point of the withers, is equal to the length, when measured horizontally from the prosternum to the point of the buttocks.

- The height at the elbows is only slightly more than half of the height at withers.
- The **chest** is sufficiently deep reaching to the elbow.
- Height at the withers for both dogs and bitches: 8 inches to 11 inches.
- Weight for both dogs and bitches: up to 6 ½ pounds.
- **Disqualifications-**
Height at the withers over 12 inches or under 7 inches.
Weight less than 2 pounds.



Head

- The head is small compared to the body.
- The expression is bright, attentive with attitude.



Eyes

Eyes are quite large, rounded, dark, slightly prominent, set well apart and looking straight ahead. Eyelids are tightly fitting.

- **Black and Tan dogs** have eyes that are darkest brown to black with black eye rims.
- **Chocolate and Tan dogs** have eyes that are brown to light brown and eye rims that are brown to light brown (darker color preferred).
- **Blue and Tan dogs** have eyes and eye rims that are slate grey.
- **Red coated dogs** have eyes that are darkest brown to black with black eye rims.
- **Red Sable dogs** have eyes that are darkest brown to black with black eye rims.
- **Red Brown dogs** have eyes and eye rims that are brown (darker color preferred).



Ears

Big, thin, set high, erect and wider at the base tapering to a triangular shape.

- **Semi-pricked ears** in longhaired dogs with heavy fringes is permissible but not desirable.
- **Disqualification** - Hanging (completely down) ears.



Skull, Stop, Muzzle, Cheekbones

- The **Skull** is high but not too wide (width at the level of **zygomatic arches** does not exceed depth of the skull).
- The **Stop** is clearly pronounced.
- The **Muzzle** is lean and tapered and is slightly shorter than the skull.
- The **Cheekbones** are only slightly pronounced.



(lack of stop)

Zygomatic Arch

Width at the level of zygomatic arches does not exceed depth of the skull



Nose

Black and Tan dogs have black noses.

Chocolate and Tan dogs have noses that are brown to light brown (darker color preferred).

Blue and Tan dogs have slate grey noses.

Red coated dogs have black noses.

Red Sable dogs have black noses.

Red Brown dogs have brown noses (darker color preferred).



Lips

Lips are thin, lean, tight-fitting.

Black and Tan dogs have black lips.

Chocolate and Tan dogs have lips that are brown to light brown (darker color preferred)

Blue and Tan dogs have slate grey lips.

Red coated dogs have black lips.

Red Sable dogs have black lips.

Red Brown dogs have brown lips (darker color preferred).



Bite

The teeth should meet in a scissor bite. Russian Toy teeth are small, white. Absence of two incisors is permitted in each jaw.

- **Faults**

Level bite or incisors sloping forward.

The absence of more than two incisors in either jaw is a serious fault.

- **Disqualification**

Overshot

Undershot

Absence of one canine.



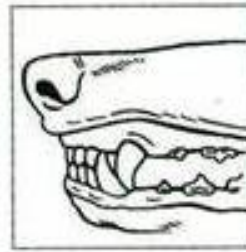
Correct Scissor Bite



Level Bite



Overshot



Undershot

Neck, Topline, Body

- Neck - is long, lean, carried high, slightly arched.
- Topline - gradually slopes from the withers to the root of the tail.

- Withers - are slightly pronounced.
- Body - The chest is oval, sufficiently deep and not too wide.
- Underline - has a tucked-up belly and drawn up flanks, forming a nicely curved line from the chest to the flanks.
- Back - strong and straight.
- Loin - short and slightly arched.
- Croup - somewhat rounded and slightly sloping.



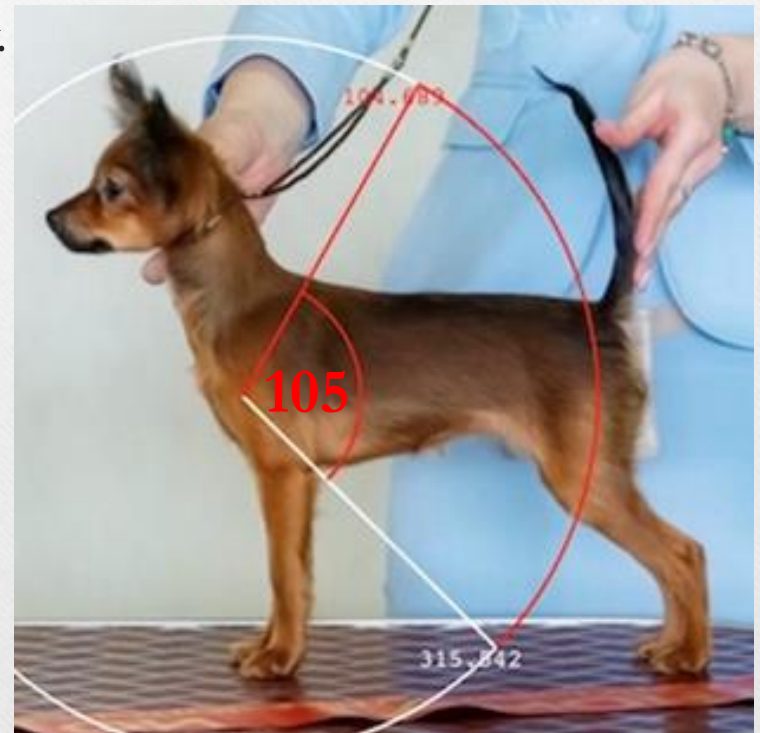
Tail

- Tail - Tails may be natural or docked (only two or three vertebrae are left) and is carried high.
- The undocked (natural) tail is a sickle tail.
- The tail should not be carried lower than back level when moving.
- Fault – Low set tail.

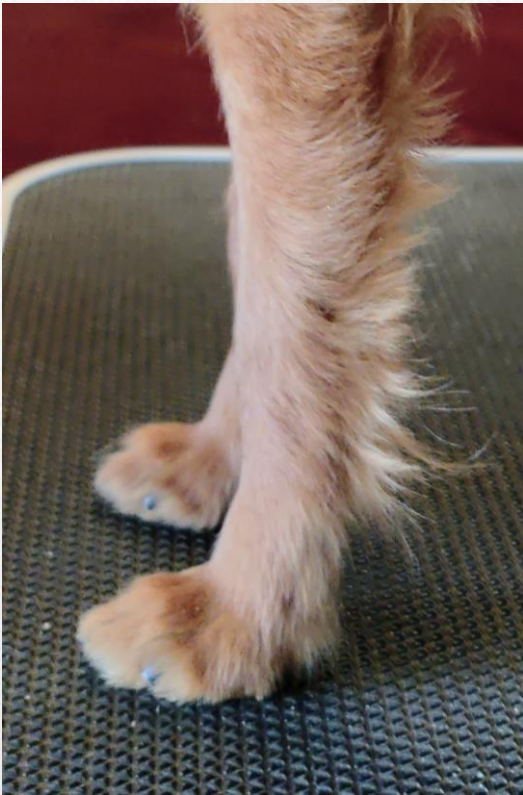


Forequarters

- Shoulders - The shoulder blades are moderately long and not too sloping.
- Upper Arm - The upper arm forms an angle of 105 degrees with the shoulder blade. The length of upper arm is approximately equal to the length of shoulder.
- Elbow - The elbow is in line with the body.
- Legs - Forequarters legs are thin and lean. Seen from the front, the front legs are straight and parallel.
- The forearm is long, straight.
- The carpus (wrist) is lean.
- Pasterns are almost vertical.
- Dewclaws may be removed or left natural.



Feet and Toes

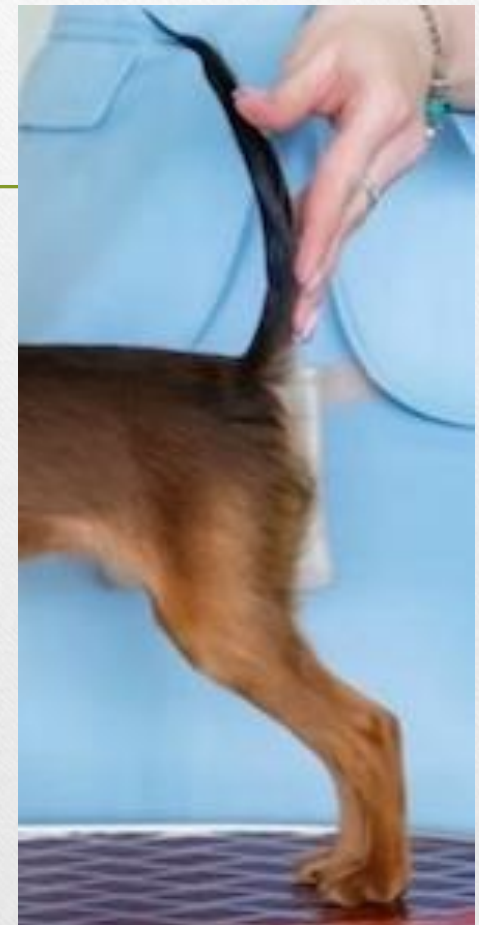


- Forefeet are small, oval, turning neither in or out with pads that are cushioned. Toes are well knit and arched.
- Hind feet are a little bit narrower than forefeet with pads that are cushioned and toes are well knit and arched.
- Pads and Nails –
 - Black and Tan** dogs have black nails and pads.
 - Chocolate and Tan dogs** have nails and pads that are brown to light brown (darker color preferred).
 - Blue and Tan dogs** have slate grey nails and pads.
 - Red coated dogs** have black nails and pads.
 - Red Sable dogs** have black nails and pads.
 - Red Brown dogs** have brown nails and pads (darker color preferred).

Hindquarters

Seen from the rear, the hind legs are straight and parallel, but standing a little bit wider than the forelegs.

- Stifles and hocks are sufficiently bent.
- Angulation - Hindquarters should be sufficiently angulated. The upper thigh muscles are lean and developed. The upper and lower thighs are of the same length.
- The Hocks should be vertical.
- There should be no rear dewclaws.
- Serious fault – Short legs.



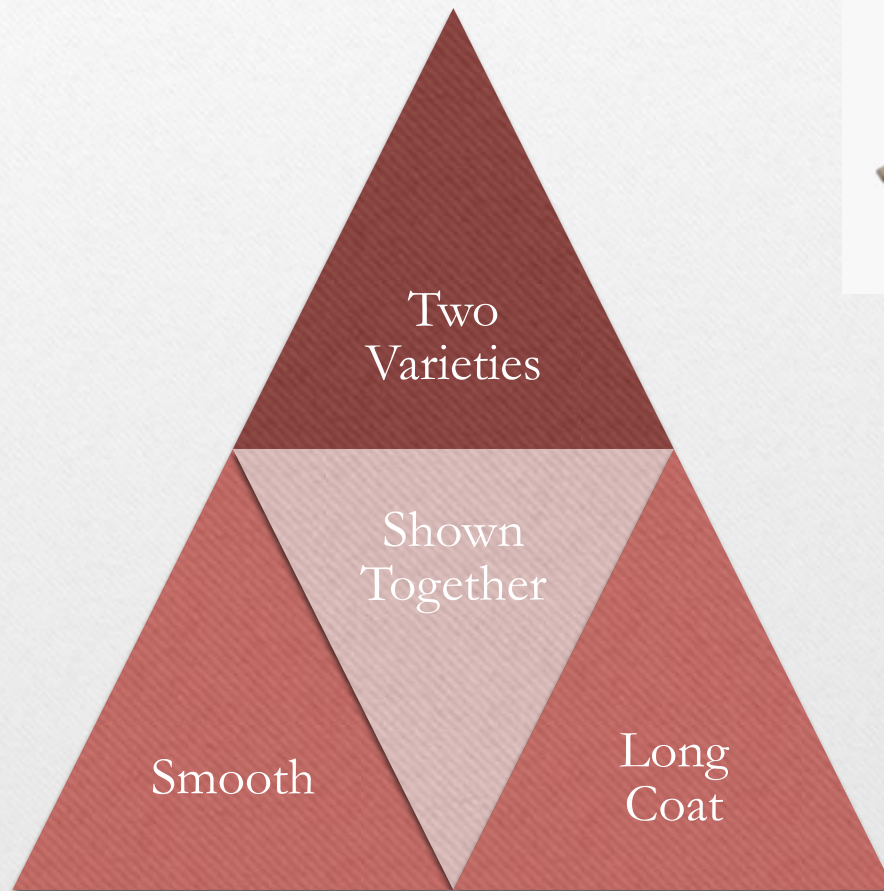
Skin

The skin should be dry and tight-fitting.



Coat

There exists two types for the breed:
smooth-coated and long-coated.



Smooth-Coat

Smooth coat dogs have short, close-lying, shiny hair, without undercoat or bald patches.



Long-Coat

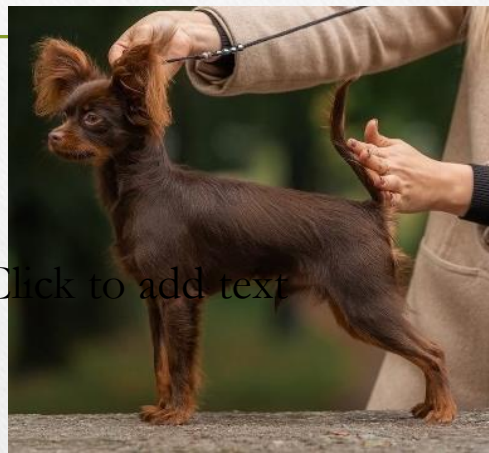
Long coat dogs have bodies covered with moderately long (one inch to three inches) straight or slightly wavy hair, close-lying, which does not hide the natural outline of the body.

- Hair on the head and on the front part of limbs is short and close-lying.
- There are distinct feathers on rear side of limbs.
- The feet have long, silky hair which completely hides the nails.
- Long coated dogs have ears that are covered with thick, long hair forming a fringe. Dogs of more than three years have such a fringe, which should completely hide the outer edges and tips of the ears.
- Body hair should not look tousled nor be too short (less than 1/2 inch).
- **Disqualification** – Long coat dogs: absence of any fringes on ears and presence of curly hair. (Dogs younger than 18 months may have sparse or few fringes).

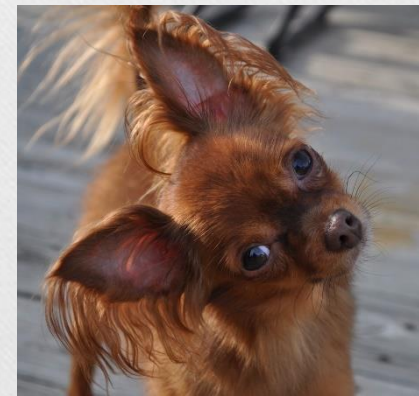


Color

Russian Toy coats may be Black and Tan, Chocolate and Tan, Blue and Tan, Red, Red Sable, or Red Brown.



Click to add text



Colors

Black & Tan



Jet black with rich, bright tan markings over eyes, on cheeks, inside ears, on chest, legs, and on underside of tail.

Eyes: Darkest brown to black

Eye rims: Black eye rims

Nose and Lips: Black Lips

Chocolate & Tan



Rich chocolate brown with tan markings over eyes, on cheeks, inside ears, on chest, legs, and on underside of tail

Eyes: Brown to light brown (darker preferred)

Eye rims brown to light brown (darker preferred)

Nose and Lips: Brown to light brown (darker preferred)

Blue & Tan



Blue based grey coloring with **tan markings** over eyes, on cheeks, inside ears, on chest, legs, and on underside of tail.

Eyes and eye rims: Slate gray

Nose and Lips: Slate gray

Colors

Red



Whole-colored red that may range from rich ruby to lighter hues, but deeper saturated color is preferred.

Eyes: Darkest brown to black with black eye rims.

Nose and Lips: Black.

Red Sable

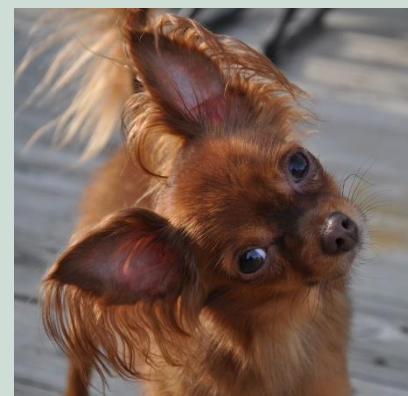


Red with black-tipped hair on body and ears

Eyes: Darkest brown to black with black eye rims.

Nose and Lips: Black.

Red Brown



Red with brown-tipped hair on body and ears

Eyes and eye rims: Brown (darker color preferred).

Nose and Lips: Brown (darker color preferred).

Color Faults and Disqualifications

- **Faults** - Presence of bald patches in smooth coat dogs. Too long or too short hair on body of long coat dogs. Small white spots under $\frac{1}{2}$ inch on chest and toes. Solid black, brown and blue colors. Tan markings too large or with dark shadings. Any white spots on the head, abdomen and above metacarpus.
- **Severe fault** - Large white patches over $\frac{1}{2}$ inch on chest and throat.
- **Disqualification** - Presence of brindle markings.

Gait

Easy, straightforward, fast. No noticeable change in the topline when moving.



Temperament

Active, cheerful, possessing keen intelligence, slightly aloof to strangers but neither cowardly nor aggressive.

- **Fault** – Timid behavior.



Faults

Any departure from the foregoing points should be considered a fault and the seriousness with which the fault should be regarded should be in exact proportion to its degree and its effect upon the health and welfare of the dog.



Disqualifications

- Height at withers over 12 inches or under 7 inches.
- Weight less than 2 pounds.
- Hanging (completely down) ears.
- Overshot, undershot.
- Absence of one canine.
- Long coat dogs: absence of any fringes on ears and presence of curly hair. (Dogs younger than 18 months may have sparse or few fringes).
- Presence of brindle markings.



Approved July 14, 2017
Effective June 27, 2018

Presentation



- Might be standoffish and slightly aloof to strangers on the table, but neither cowardly nor aggressive.
- Dogs best presented free stacking, with an expression that is bright and attentive with attitude.
- Free moving gait with the tail above the horizontal.
- Tails may be down when standing, but not between legs in a "fear" position.
- Russian Toys should **NOT** be sparred in the ring.
- Tails should not be pulled or used to lift the dog.
- Minimal grooming to neaten the dog.

Thank You!
Questions?

