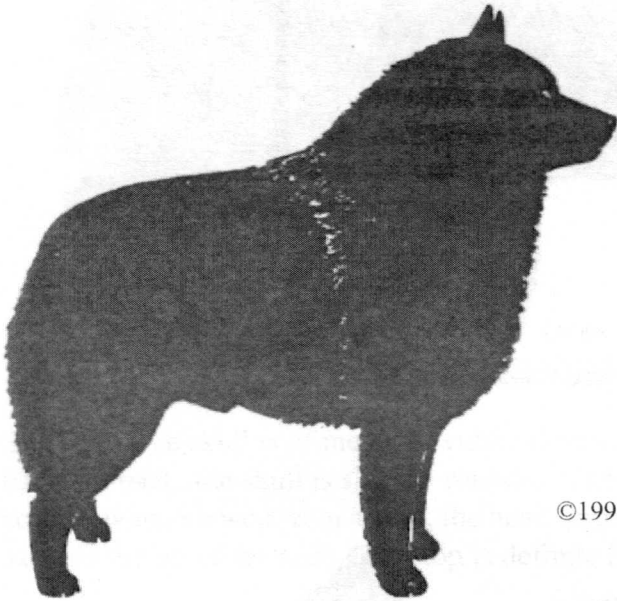


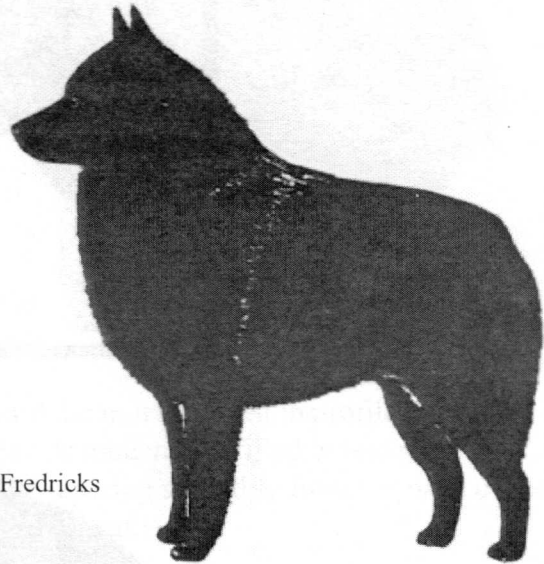
# THE SCHIPPERKE

## AN ILLUSTRATED GUIDE

### GENERAL APPEARANCE



**DOG**



**BITCH**

©1998 Anita Fredricks

The Schipperke is an agile, active watchdog and hunter of vermin. In appearance he is a small, thickset, cobby, black, tailless dog with a fox-like face. The dog is square in profile and possesses a distinctive coat, which includes a stand-out ruff, cape and culottes. All of these create a unique silhouette, appearing to slope from shoulders to croup. Males are decidedly masculine without coarseness. Bitches are decidedly feminine without over refinement.

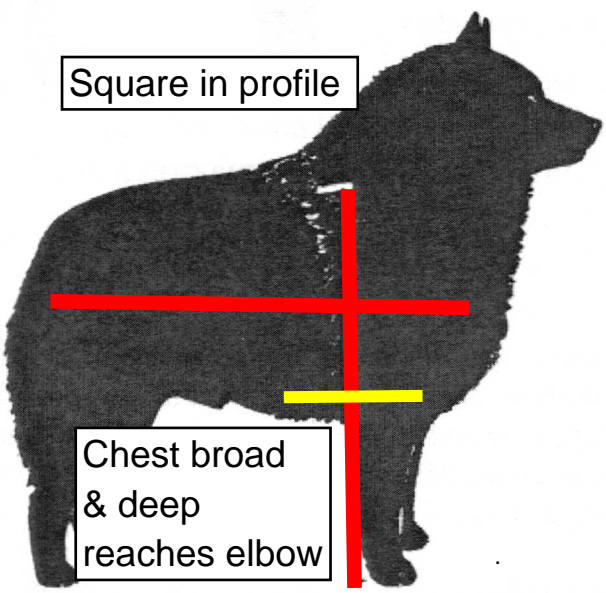
Any deviation from the ideal described in the standard should be penalized to the extent of the deviation. Faults common to all breeds are as undesirable in the Schipperke as in any other breed, even though such faults may not be specifically mentioned in the standard.

*The distinctive silhouette and coat pattern are the things that set the Schipperke apart from other breeds. These are very important when judging the Schipperke.*

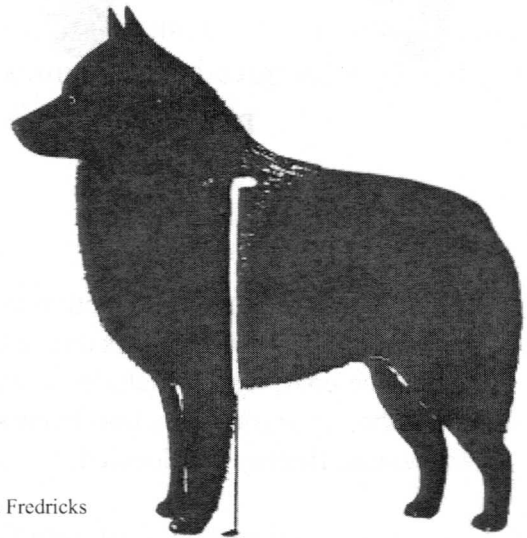
SIZE, PROPORTION, SUBSTANCE



Square in profile



Chest broad  
& deep  
reaches elbow



a Fredricks

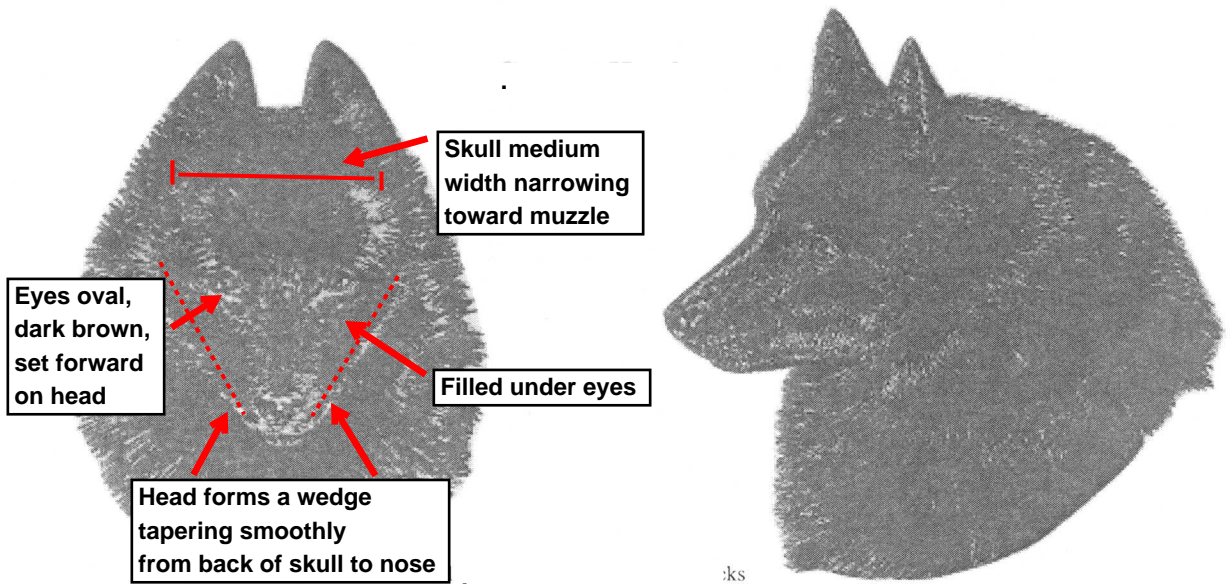
SIZE - The suggested height at the highest point of the withers is 11 to 13 inches for males and 10 to 12 inches for bitches. Quality should always take precedence over size.

PROPORTION - Square in profile.

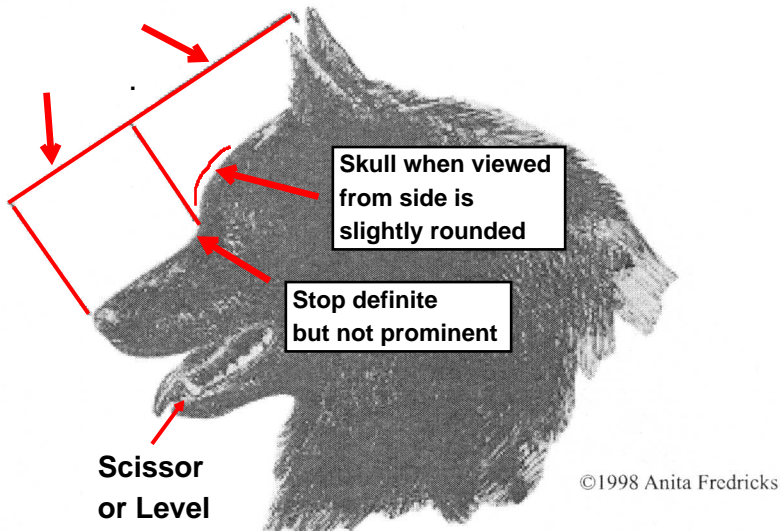
SUBSTANCE - Thickset.

## HEAD

**EXPRESSION** - The expression is questioning, mischievous, impudent and alert, but never mean or wild. The well proportioned head, accompanied by the correct eyes and ears, will give the dog proper Schipperke expression.



**SKULL** - The skull is of medium width, narrowing toward the muzzle. Seen in profile with the ears laid back, the skull is slightly rounded. The upper jaw is moderately filled in under the eyes, so that, when viewed from above, the head forms a wedge tapering smoothly from the back of the skull to the tip of the nose. The stop is definite but not prominent.

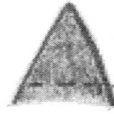
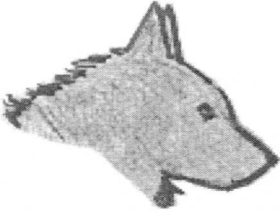


The length of the muzzle is slightly less than the length of the skull.

**EYES** - The ideal eyes are small, oval rather than round, dark brown, and placed forward on the head.

## EARS

Correct Ears



The ears are small, triangular, placed high on the head, and when at attention, very erect.

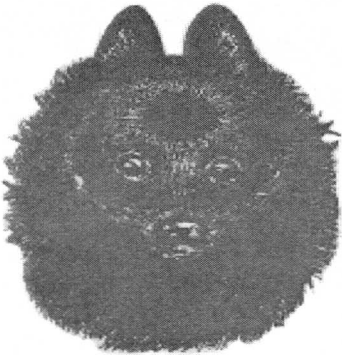
## Incorrect Ears



A drop ear or ears is a disqualification.

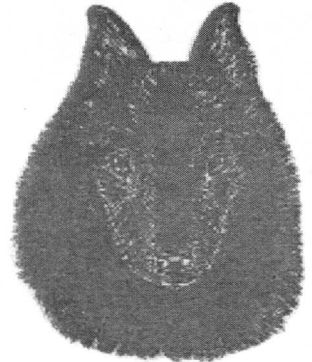
## *Incorrect Ear Shapes, Eyes and Heads*

### *Toy type*



*ears spoon shaped  
eyes too large  
domed head  
weak muzzle*

### *Elongated*



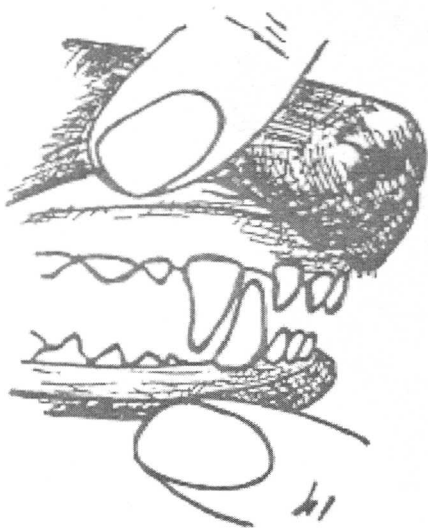
*flanged ears  
eyes on side of head  
head too narrow  
lacks stop*

Illustrations ©1998 Anita Fredricks

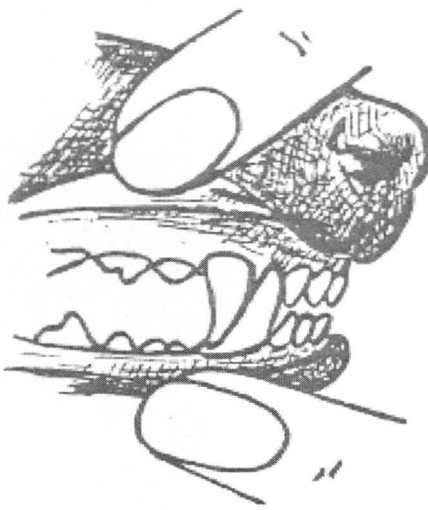
NOSE - The nose is small and black.

BITE -The bite must be scissors or level. Any deviation is to be severely penalized.

Correct Bites

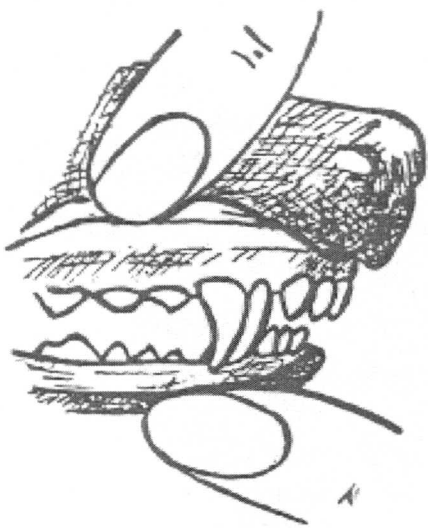


Scissors

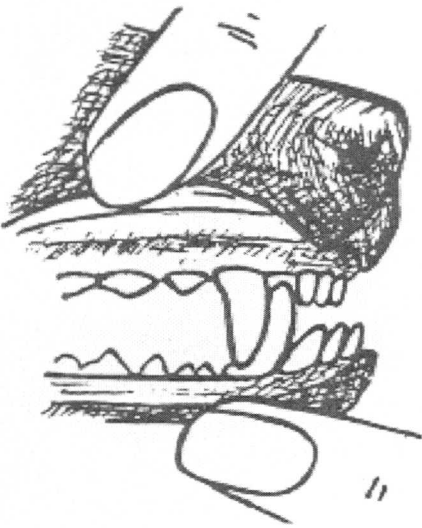


Level

Incorrect Bites



Overshot

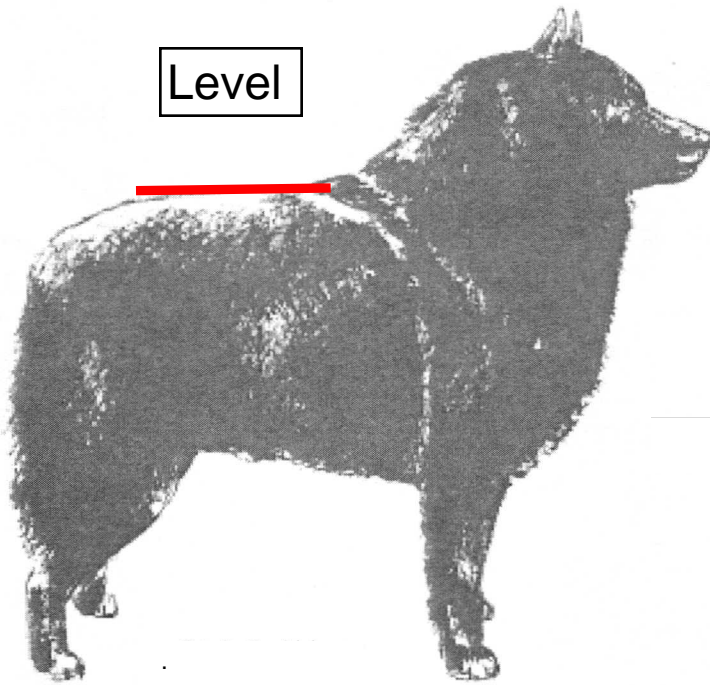


Undershot

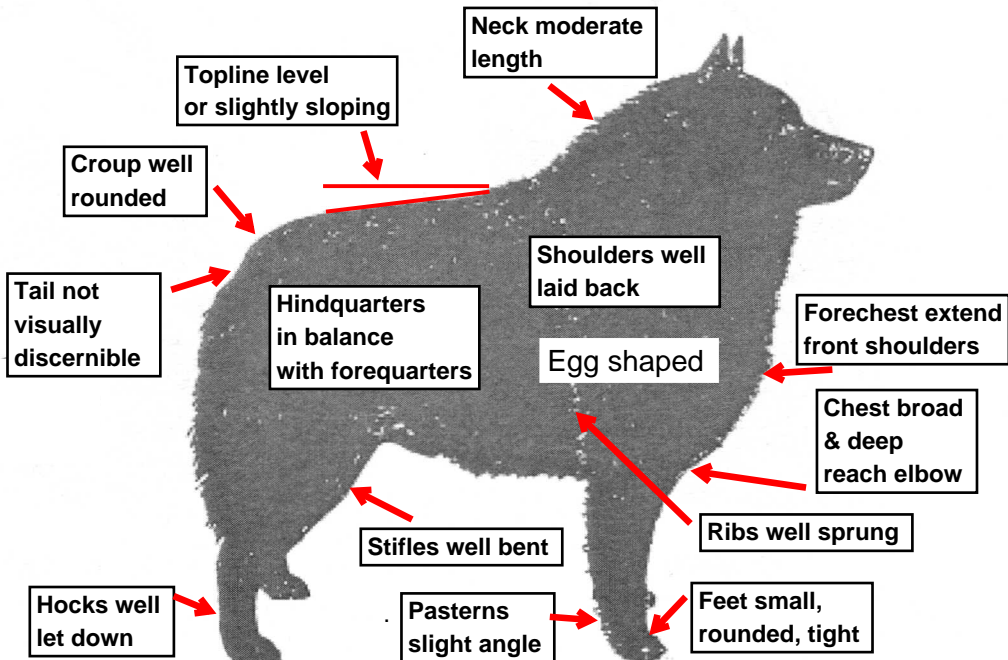
Illustrations ©1998 by SCA member Anita Fredricks

## NECK, TOPLINE, BODY

**NECK** - The neck is of moderate length, slightly arched and in balance with the rest of the dog to give the correct silhouette.

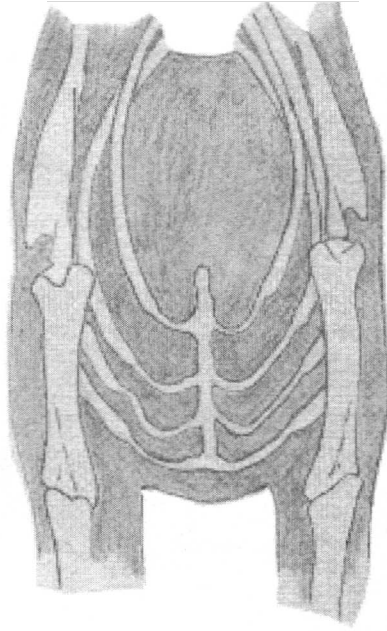


**TOPLINE** - The topline is level or sloping slightly from the withers to the croup. The stand-out ruff add to the slope, making the dog seem slightly higher at the shoulders than the rump.



**BODY**  
**Modified oval**

Front  
“modified oval”



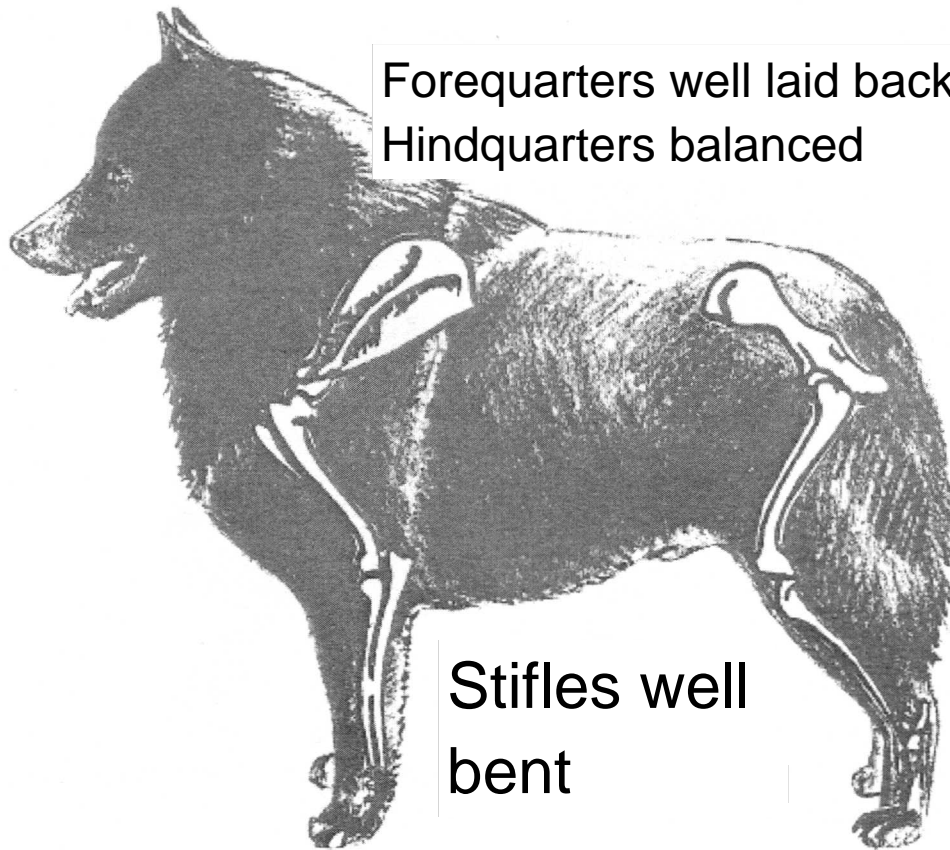
©Anita Fredricks

The chest is broad and deep, and reaches to the elbows. The well sprung ribs (modified oval) are wide behind the shoulders and taper to the sternum. The forechest extends in front of the shoulders between the front legs. The loin is short, muscular and moderately drawn up. The croup is broad and well rounded with the tail docked. No tail is visually discernible.



©Anita Fredricks

FOREQUARTERS, HINDQUARTERS



Forequarters well laid back  
Hindquarters balanced

Stifles well  
bent

**FOREQUARTERS** - The shoulders are well laid back, with the legs extending straight down from the body when viewed from the front. From the side, legs are placed well under the body. Pasterns are short, thick and strong, but still flexible, showing a slight angle when viewed from the side. Dewclaws are generally removed. Feet are small, round and tight. Nails are short, strong and black.

**HINDQUARTERS** - The hindquarters appear slightly lighter than forequarters, but are well muscled, and in balance with the front. The hocks are well let down and the stifles are well bent. Extreme angulation is to be penalized.

REAR

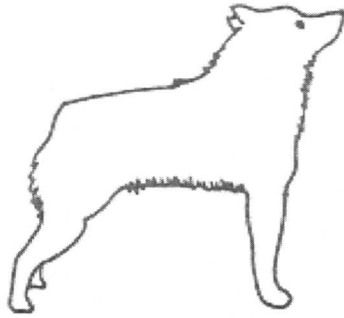
From the rear, the legs extend straight down from the hip through the hock to the feet. Dewclaws must be removed.



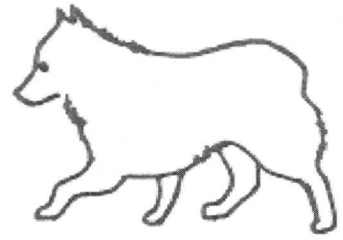
©1998 Anita Fredricks



# FAULTS



*long legged  
lacks substance and chest*



*short legged  
high in rear  
hackney movement*

## FRONT FAULTS

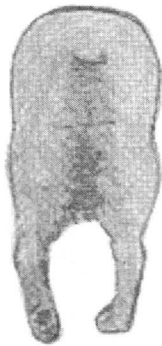


*narrow front  
east/west feet*

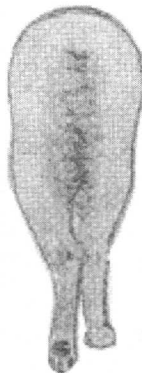


*barrel chested  
out at elbows, toes in*

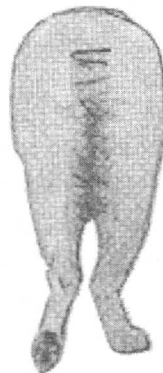
## REAR FAULTS



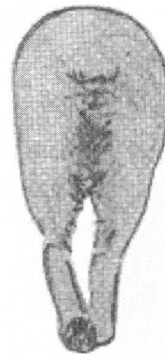
bow hocked



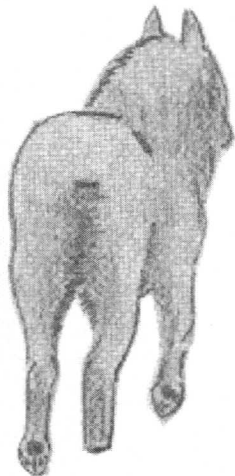
close behind



cow hocked  
toeing out



single tracking



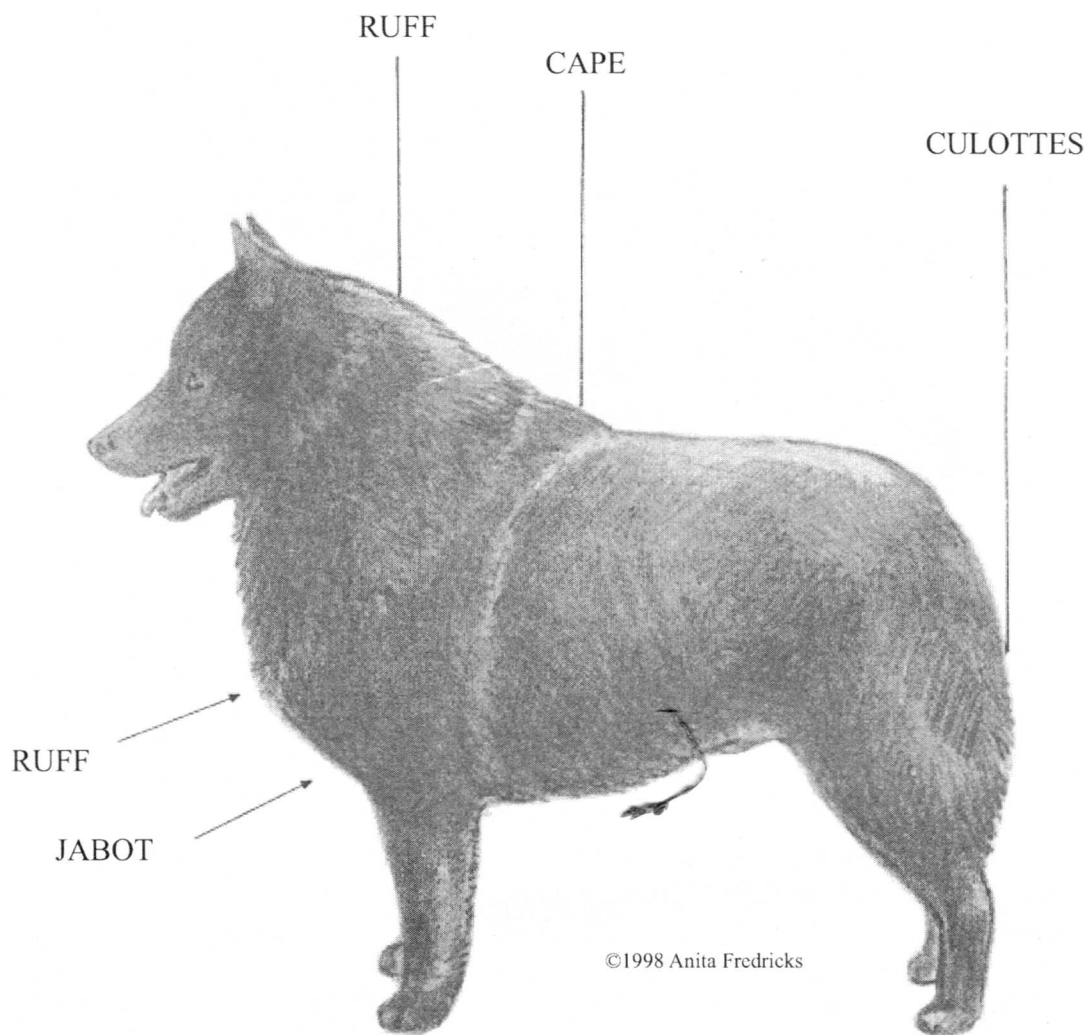
side winding

Illustrations ©1998 by SCA member Anita Fredricks

## COAT

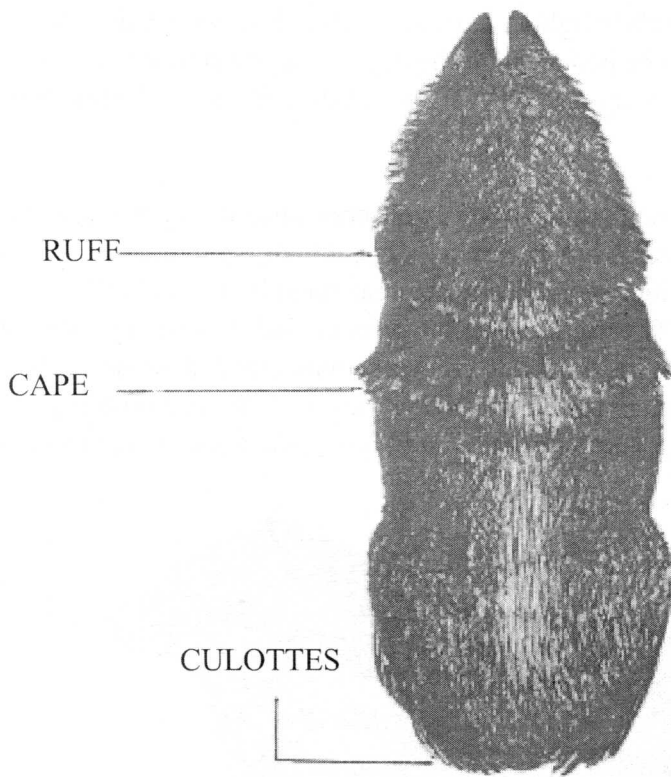
### PATTERN

“The coat is abundant, straight and slightly harsh to the touch.”



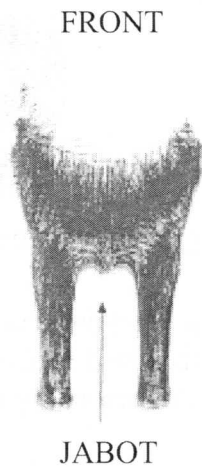
**PATTERN** - The adult coat is highly characteristic and must include several distinct lengths growing naturally in a specific pattern. The coat is short on the face, ears, front of the forelegs and on the hocks; it is medium length on the body, and longer in the ruff, cape, jabot and culottes. The ruff begins in back of the ears and extends completely around the neck; the cape forms an additional distinct layer extending beyond the ruff; the jabot extends across the chest and down between the front legs. The hair down the middle of the back, starting just behind the cape and continuing over the rump, lies flat. It is slightly shorter than the cape but longer than the hair on the sides of the body and sides of the legs. The coat on the rear of the thighs forms culottes, which should be as long as the ruff. Lack of differentiation in coat lengths should be heavily penalized, as it is an essential breed characteristic.

COAT - RUFF, CAPE, JABOT, CULOTTES

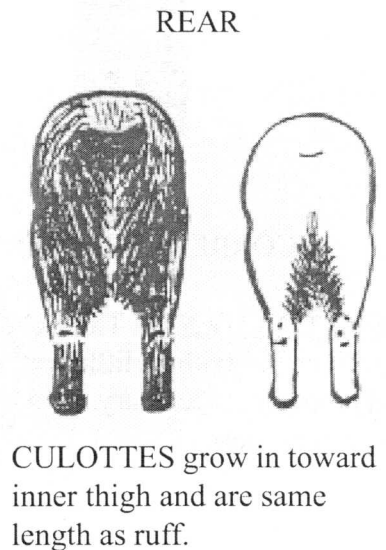


TEXTURE - The coat is abundant, straight and slightly harsh to the touch. The softer undercoat is dense and short on the body and is very dense around the neck, making the ruff stand out. Silky coats, body coats over 3 inches in length or very short harsh coats are equally incorrect.

TRIMMING - As the Schipperke is a natural breed, only trimming of the whiskers and the hair between the pads of the feet is optional. Any other trimming must not be done.

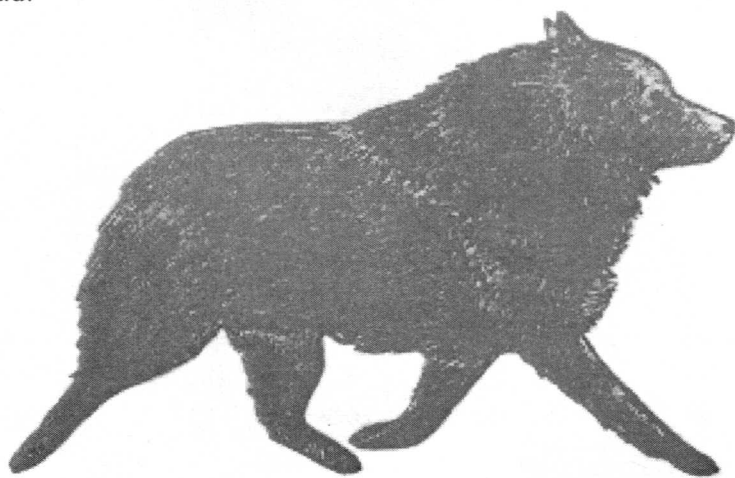


Illustrations ©1998 Anita Fredricks



**COLOR** - The outercoat must be black. Any color other than a natural black is a disqualification. The undercoat, however, may be slightly lighter. During the shedding period, the coat might take on a transitory reddish cast, which is to be penalized to the degree that it detracts from the overall black appearance of the dog. Graying due to age (seven years or older) or occasional white hairs should not be penalized.

**GAIT** - Proper Schipperke movement is a smooth well coordinated and graceful trot (basically double tracking as a moderate speed), with a tendency to gradually converge toward the center of balance beneath the dog as speed increases. Front and rear must be in perfect balance with good reach in front and drive in the rear. The topline remains level or slightly sloping downward from the shoulders to the rump. Viewed from the front, the elbows remain close to the body. The legs form a straight line from the shoulders through the elbows to the toes, with the feet pointing straight ahead. From the rear, the legs form a straight line from the hip through the hocks to the pads, with the feet pointing straight ahead.



PROPER MOVEMENT, SIDEVIEW



CORRECT FROM FRONT



CORRECT FROM REAR

**TEMPERAMENT** - The Schipperke is curious, interested in everything around him, and is an excellent and faithful little watchdog. He is reserved with strangers and ready to protect his family and property if necessary. He displays a confident and independent personality, reflecting the breed's original purpose as watchdog and hunter of vermin.

#### DISQUALIFICATIONS

A drop ear or ears.

Any color other than a natural black.