



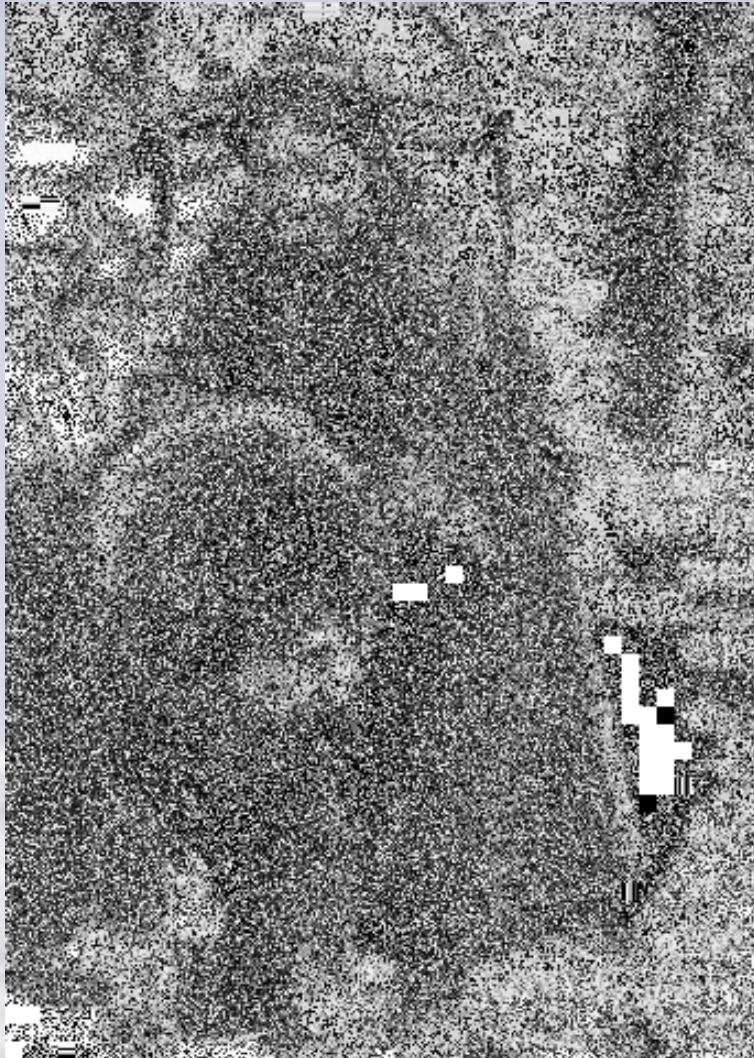
Breed Seminar

Copyright © ATMA 2012



Modern day nomads.

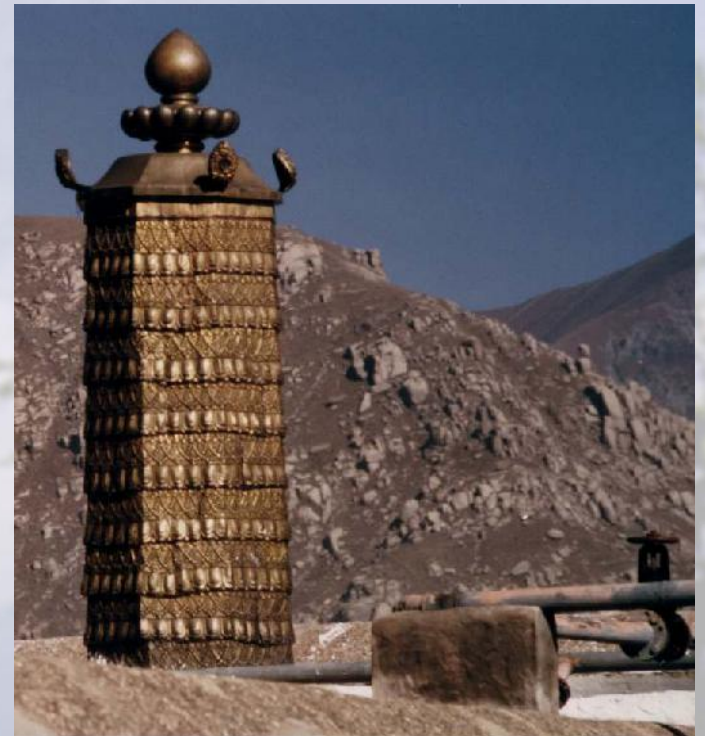




Ancestors of today's Mastiff breeds are believed to have accompanied the armies of the Assyrians, Persians, Greeks and Romans and later traveled with Atilla the Hun and Genghis Khan as far west as Europe.



During this time, it is believed that the Tibetan Mastiff remained isolated on the high plateaus and valleys of the Himalaya to develop into the magnificent animal so highly prized by the people of Tibet.





Today in Tibet, Nepal, Bhutan and other Himalayan regions, a pure Tibetan Mastiff is hard to find, though they are still bred by the nomads of the Chang-Tang plateau.



They are bred and live at an average altitude of 16,000 feet. Some are sold at the Barkhor, the market that surrounds the Jokhang Temple, the holiest temple for Tibetan Buddhists.



Bhutan



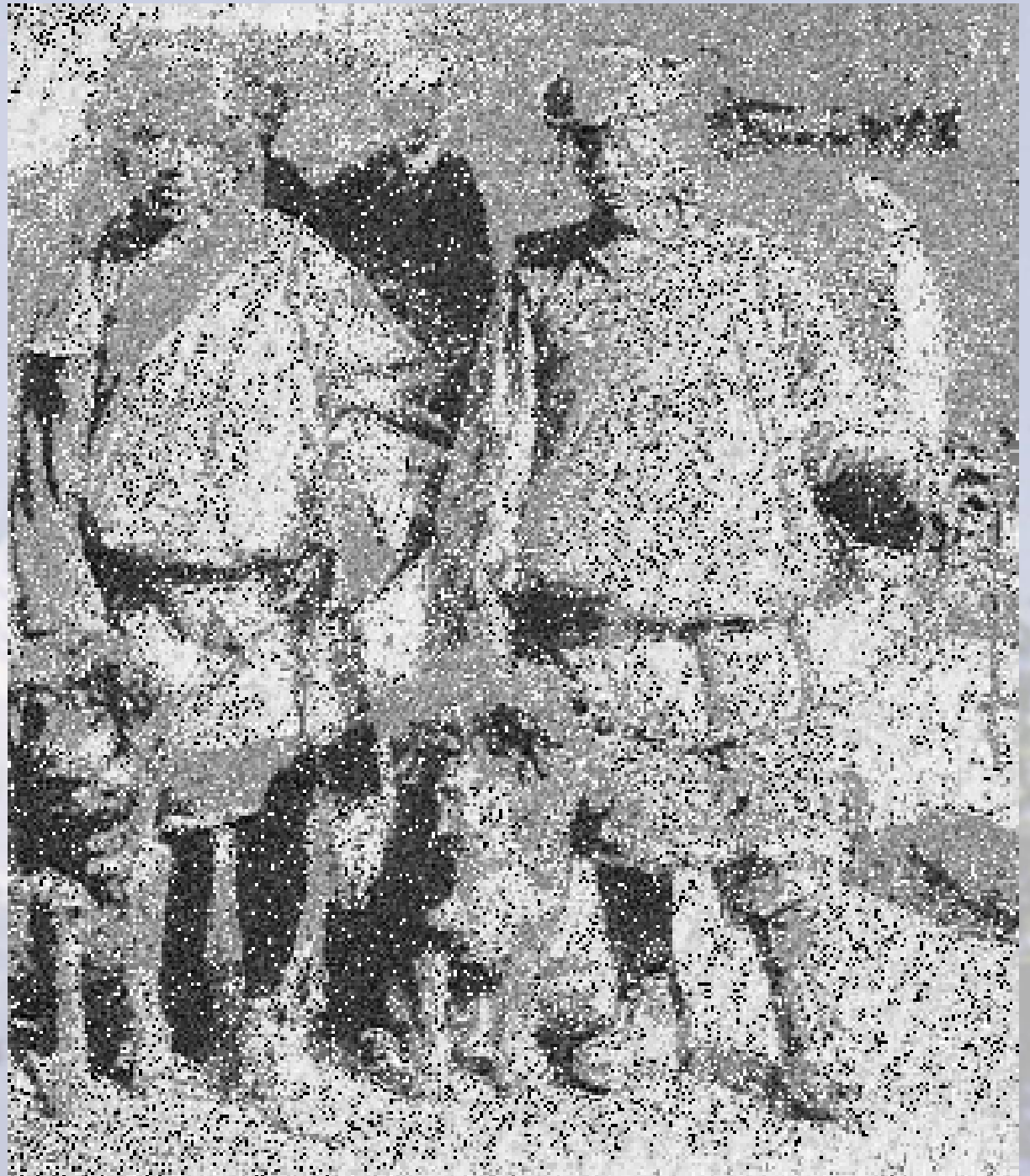
Tibetan Terrain

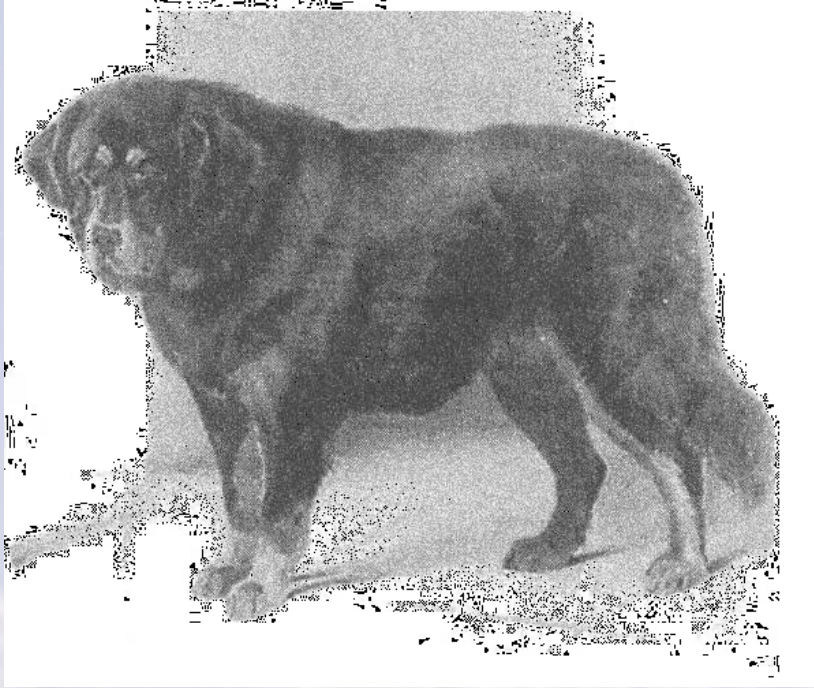




Although Tibetan Mastiffs are traditionally kept tied to the gates of the house or monastery, or tied to stakes in the nomad camps, they are let loose at night. Their name in Tibetan is “Do Khyi” or “tied dog.”

When the flocks are moved to higher pasture, the Tibetan Mastiffs were traditionally left behind to guard the tents and the children.





Although new to AKC, the Tibetan Mastiff is not a new breed, having been described by Marco Polo, and having been given to Queen Victoria and other rulers.



Tibetans believe that Do-Khyi have the souls of monks and nuns who did not make it into Shambhala, (the “heavenly paradise”).

General Appearance



Nobel and
Impressive

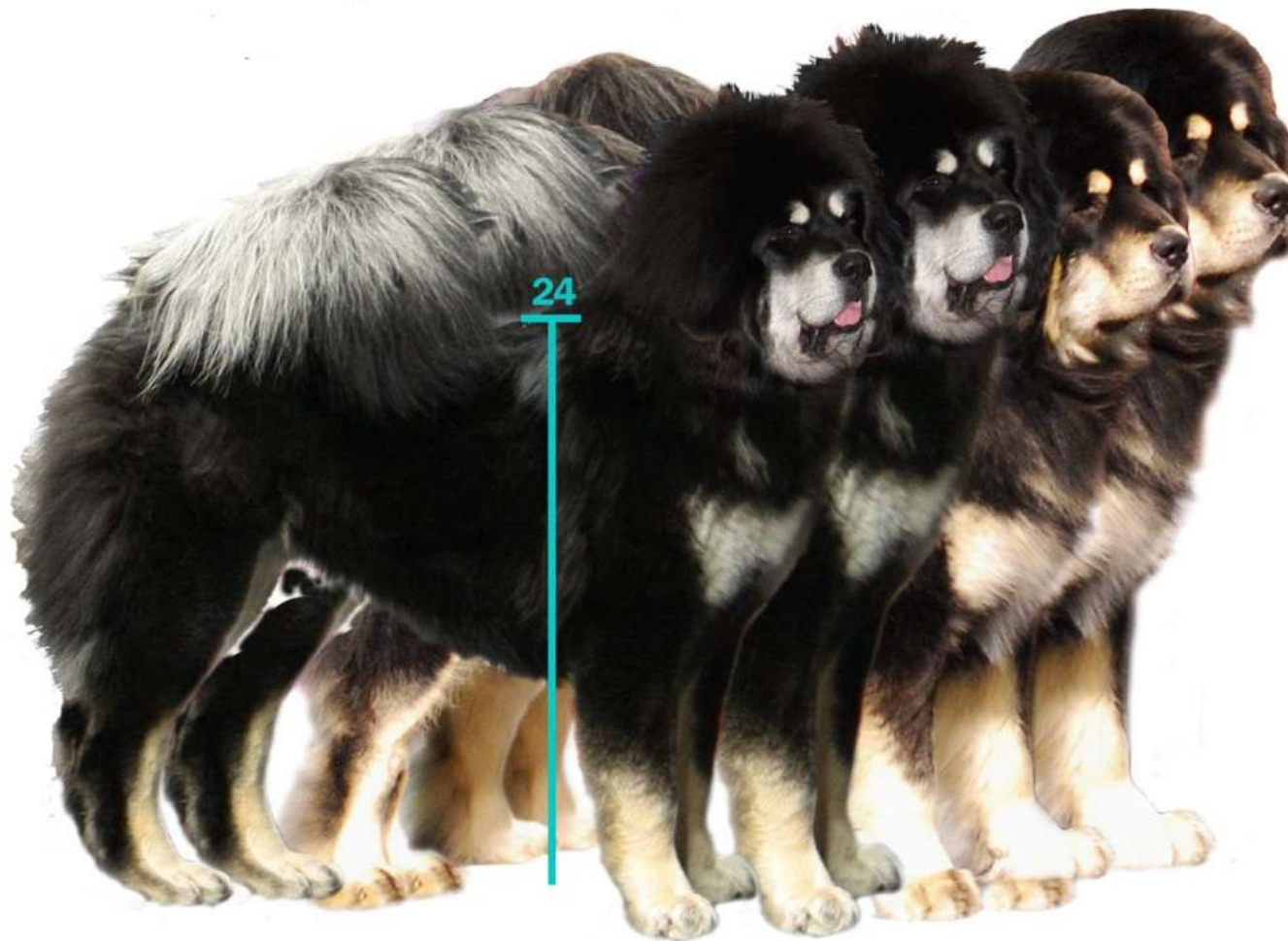
Athletic and
Substantial

Large

Watchful
Expression

Not a Giant
Breed

Size



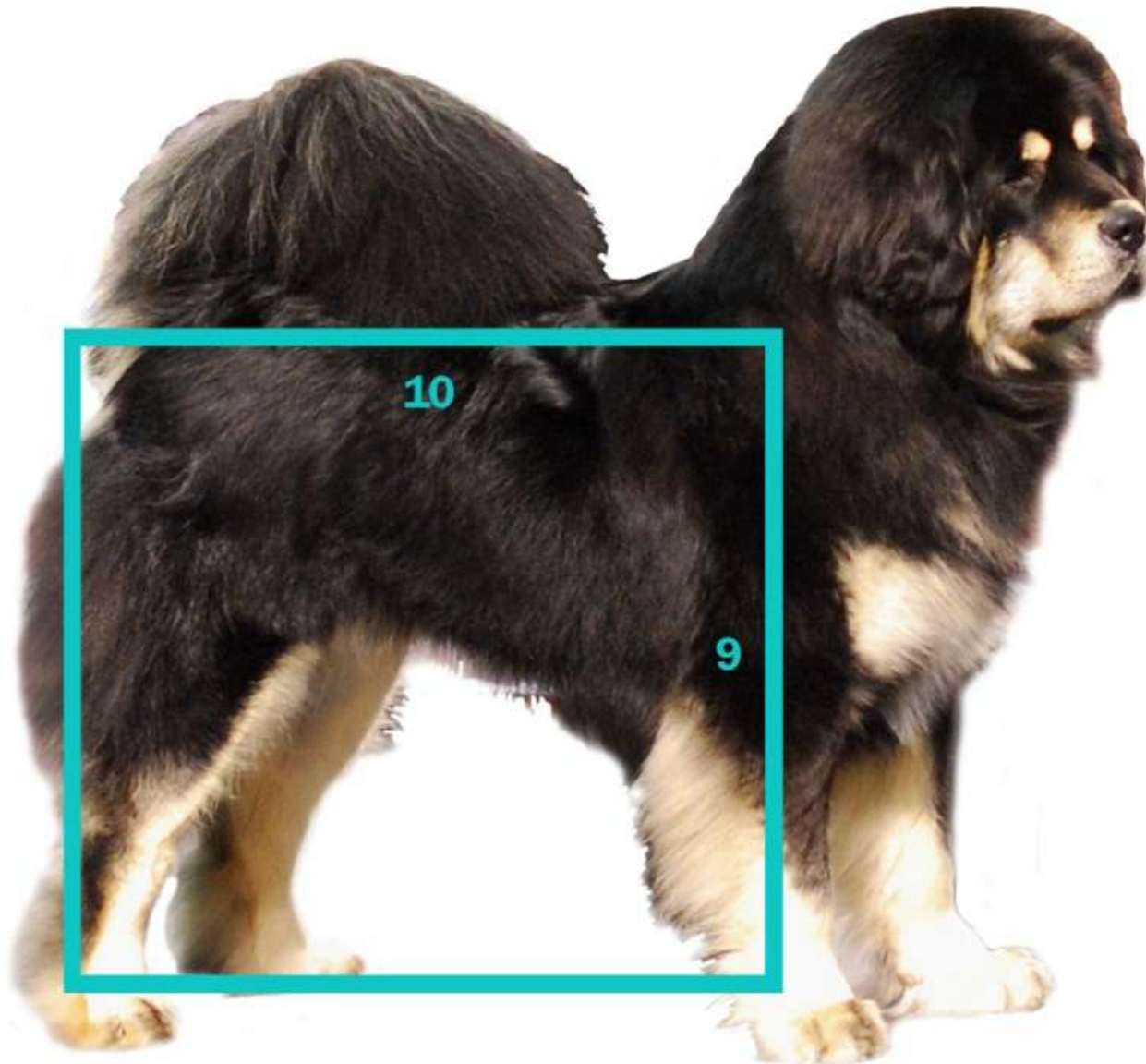
Dogs preferred 26" - 29" at the withers

Bitches preferred 24" - 27" at the withers

No preference should be given to the taller dog within the preferred range.

Dogs less than 25" & bitches less than 23" at 18mos of age are to be disqualified

Proportion



Slightly
Longer than
Tall (from
sternum to
ischium)

10-9 ratio

Substance



Impressive
Substance for
Size, in Bone,
Body and
Muscle

Substance



Poor
Substance

Head



Broad and
Strong

Heavy Brow
Ridges

A fold
extending
from above
the eye down
to mouth
acceptable at
maturity.

Heavy
wrinkling to
be severely
faulted.

Expression



Nobel

Intelligent

Watchful

Aloof

Expression



A correct expression is essential to the breed.

Expression

Three Bitches



Eyes



Eyes Deep-Set

Well Apart

Almond-Shaped

Slightly Slanting

Tightly Fitting
Rims at Maturity

Eyes

Very Expressive

Medium Size

Any Shade of
Brown

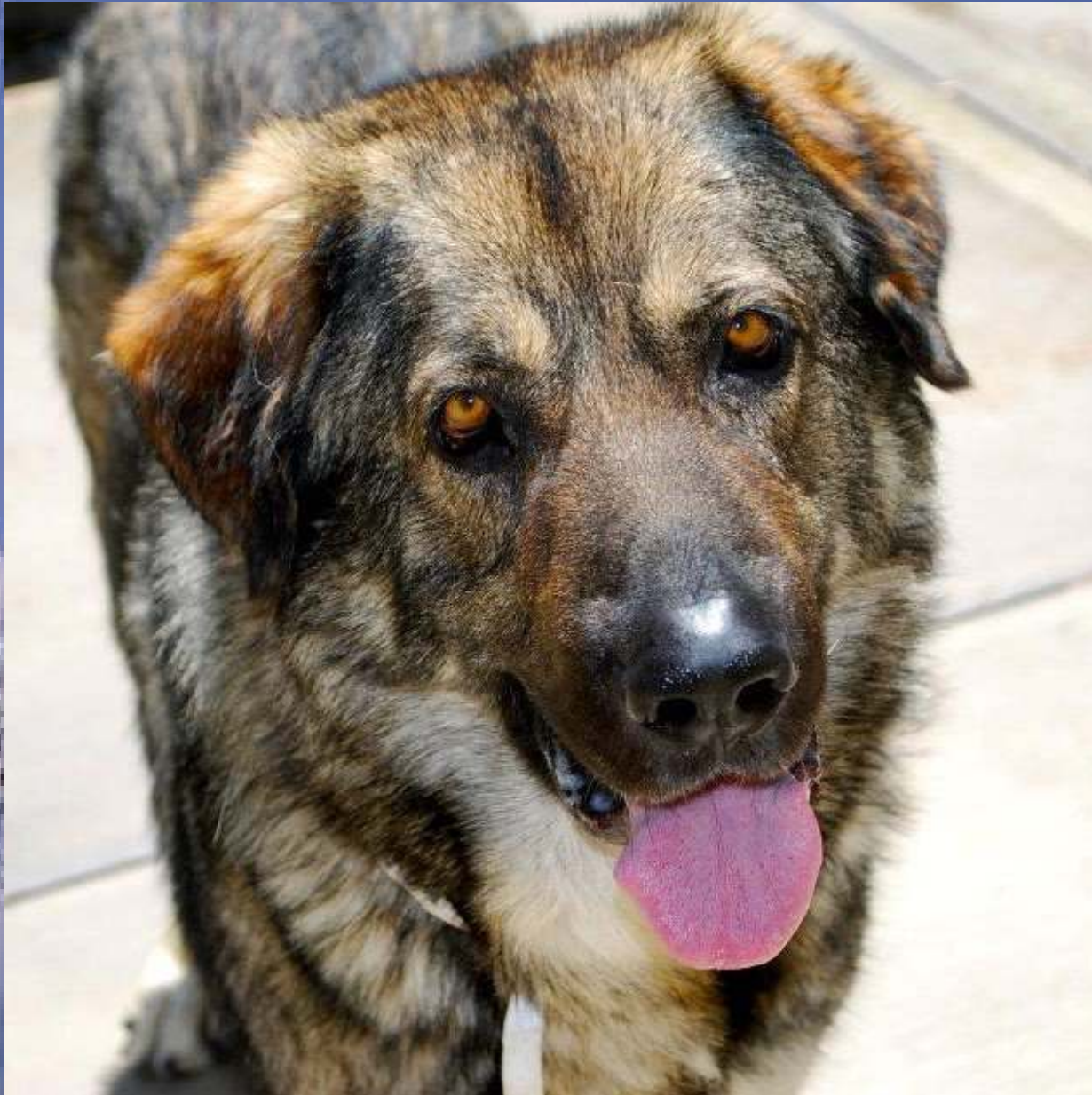


Eyes



Rims to be black except in blue/grey and blue/grey and tan dogs, the darkest possible shade of grey.

Eyes



A correct eye is vital to the correct expression.

Incorrect Shape

Any other color or shape to be severely faulted.

Ears



Medium Size

V-Shaped
Pendant

Set-On High

Dropping
Forward and
Hanging Close to
Head

The ear leather
is thick, covered
with soft short
hair, and when
measured, tip of
ear should reach
the inner corner
of the eye.

Ears



Raised when alert, level with the top of the skull.

Same Bitch

Ears

High set ears do not present the proper expression



Ears



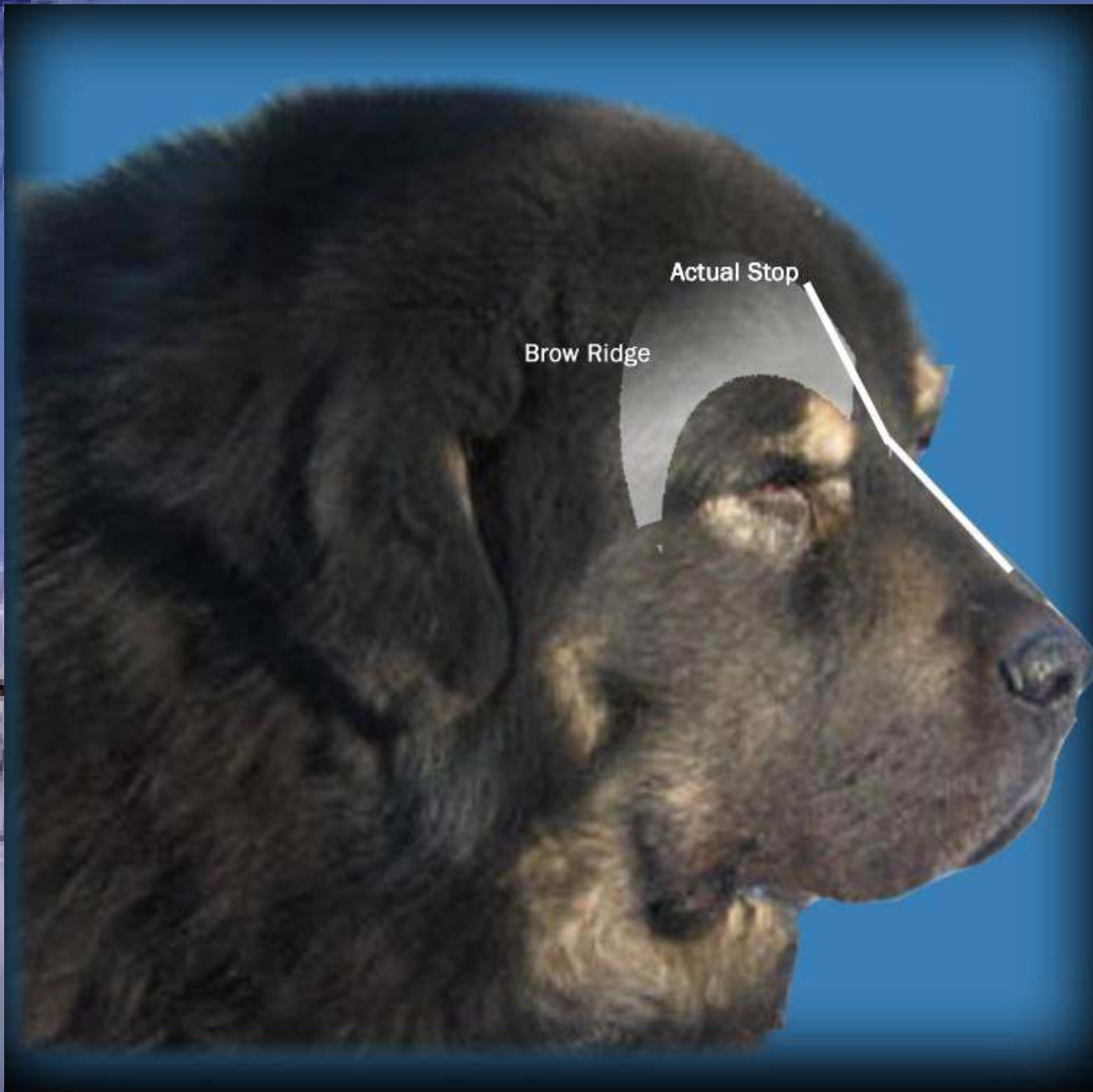
Low-set and/or hound-like ears to be severely faulted.

Skull



Broad and large, with strongly defined occiput. Broad, flat back skull. Prominent, bony brow ridges.

Stop



Moderately defined, made to appear well defined by presence of prominent brow ridges.

Muzzle



Broad

Well Filled

Square when viewed from all sides

The correct muzzle should be heavily padded, but not overly fleshy, giving an almost square appearance.

Head Proportions



Measurement from stop to end of nose to be between one-half to one-third the length of the measurement from the occiput to stop.

Longer muzzle is a severe fault.

Head Proportions



Width of skull measured from ear set to opposite ear set, to be slightly greater than length of skull measured from occiput to stop (i.e., just off square).

.

Nose



Broad, well pigmented, with open nostrils.

Black, except with blue/grey or blue/grey and tan dogs, the darkest shade of grey and brown dogs, the darkest shade of brown.

Any other color to be severely faulted.

Lips



Well Developed

Thick

Moderate Flews

Slightly
Pendulous
Lower Lips

The Tibetan Mastiff should have a dry mouth, accordingly, the flews should not be overdone. At the same time, it is important in order to maintain the correct outline of the muzzle, that the flew be thick and padded, with thin flews/lips to be faulted.

Bite



Scissor bite,
complete
dentition, level
bite acceptable.

Teeth: Canine
teeth large,
strong, broken
teeth not to be
faulted.

Disqualifications:
Undershot or
overshot bite.



10 Month Male



Same Male at 5 Years



18 Month Male



Same Male at 6 1/2 Years



19 Month Male



Same Male at 6 Years



9 Month Bitch



Same Bitch at 4 Years



12 Month Bitch



Same Bitch at 3 Years

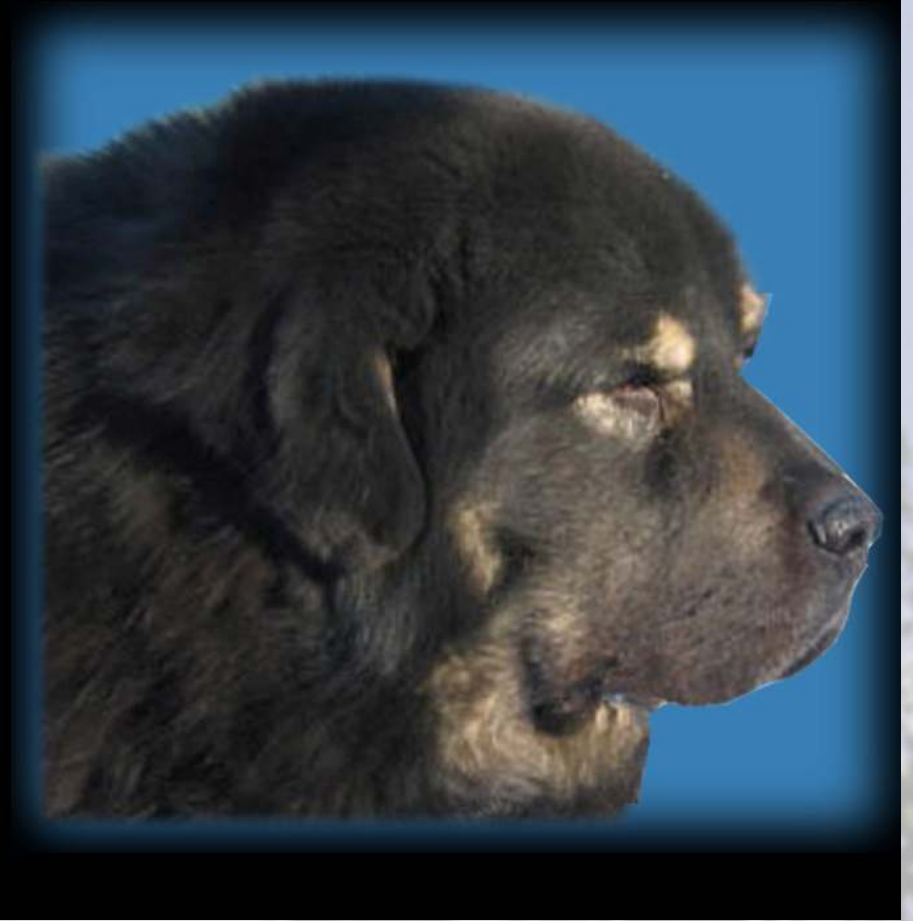


Puppy Dog

Same Dog at 3 Years



Dog at 1 Year



Same Dog at 5

Neck & Topline



Neck is moderately arched, well balanced, with a moderate dewlap around throat . Mature dogs will have a thick upstanding mane.

Topline level and firm between withers and croup.

Neck & Topline



Dogs in particular may appear to have a somewhat short neck as a result of the mane, as well as the hair on the back which often stands away from the body.

Body



The chest is well developed, with reasonable spring of rib.

Brisket reaching to just below elbows.

Underline with pronounced (but not exaggerated) tuck-up.

The back is muscular with firmly muscled loin. There is no slope or angle to the croup.

Fore- & Hindquarters



Moderate
Angulation

Strong &
Powerful

Cat Feet

Dewclaws May
be Present

Tail



Well feathered, medium to long, not reaching below the hock, set high on line with the back.

When alert or in motion, the tail must be carried curled over the back, may be carried down when dog is relaxed.

Tail



Faults:

Double Curl

Incomplete Curl

Uncurled

Straight Tail

Severe faults:
Tail not carried
in the proper
position as set
forth above.

Tail



Proper tail carriage is essential to the outline of the breed.

Coat



In general, dogs carry noticeably more coat than bitches.

The quality of the coat is of greater importance than length.

Coat



Double-coated, with fairly long, thick coarse guard hair, with heavy soft undercoat.

Hair is hard, straight and stand-off; never silky, curly or wavy. Heavy undercoat, when present, rather woolly.

Coat



Dogs are not to be penalized if shown with a summer coat.

It is not unusual in warmer months for the undercoat to be sparse or even absent.

Coat



Dogs are not to be penalized if shown with a summer coat.

It is not unusual in warmer months for the undercoat to be sparse or even absent.

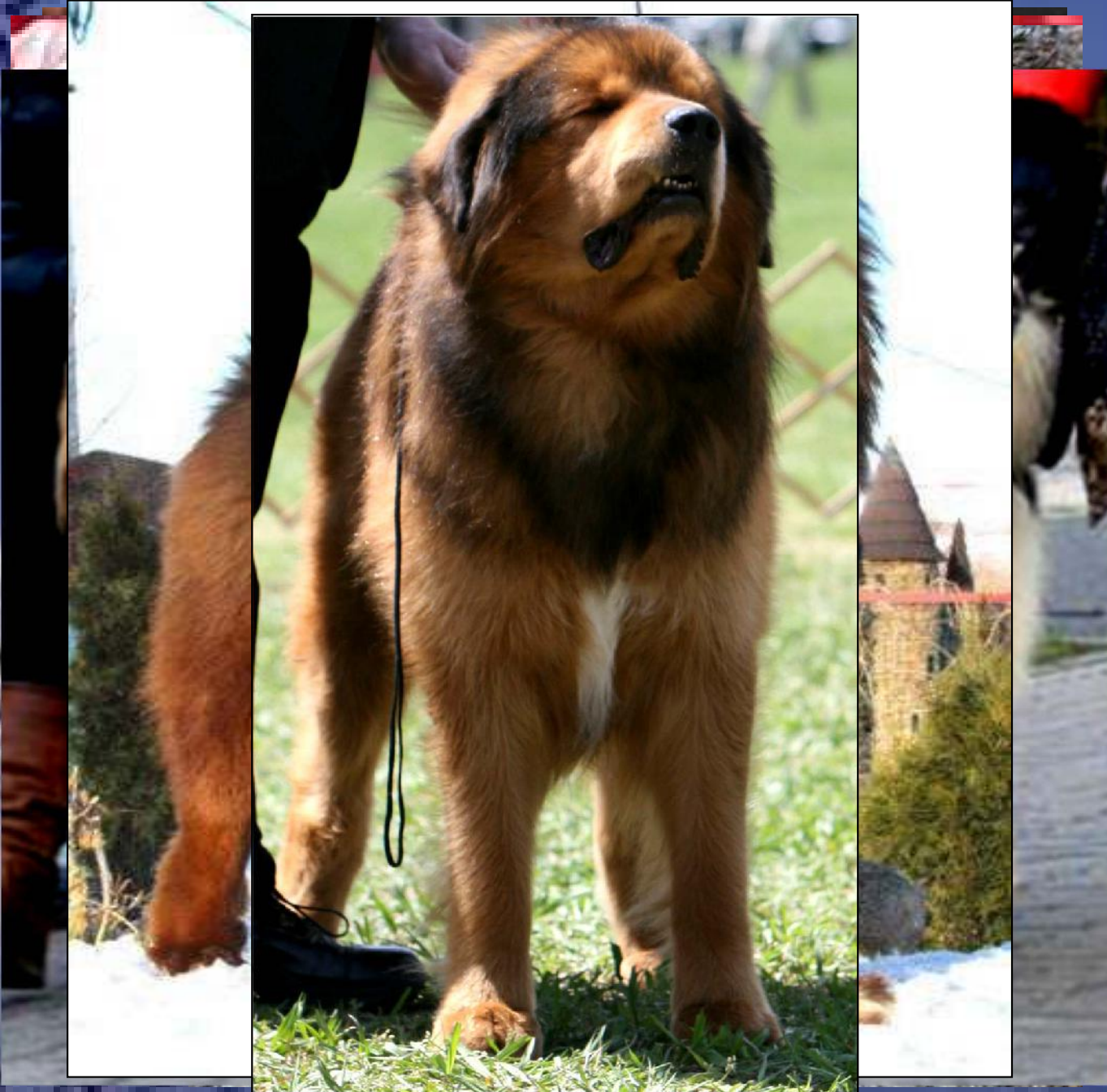
Color



Black,
Brown,
Blue/Grey,

All With or
Without
Tan Markings
(ranging from a
light silver to a
rich mahogany)

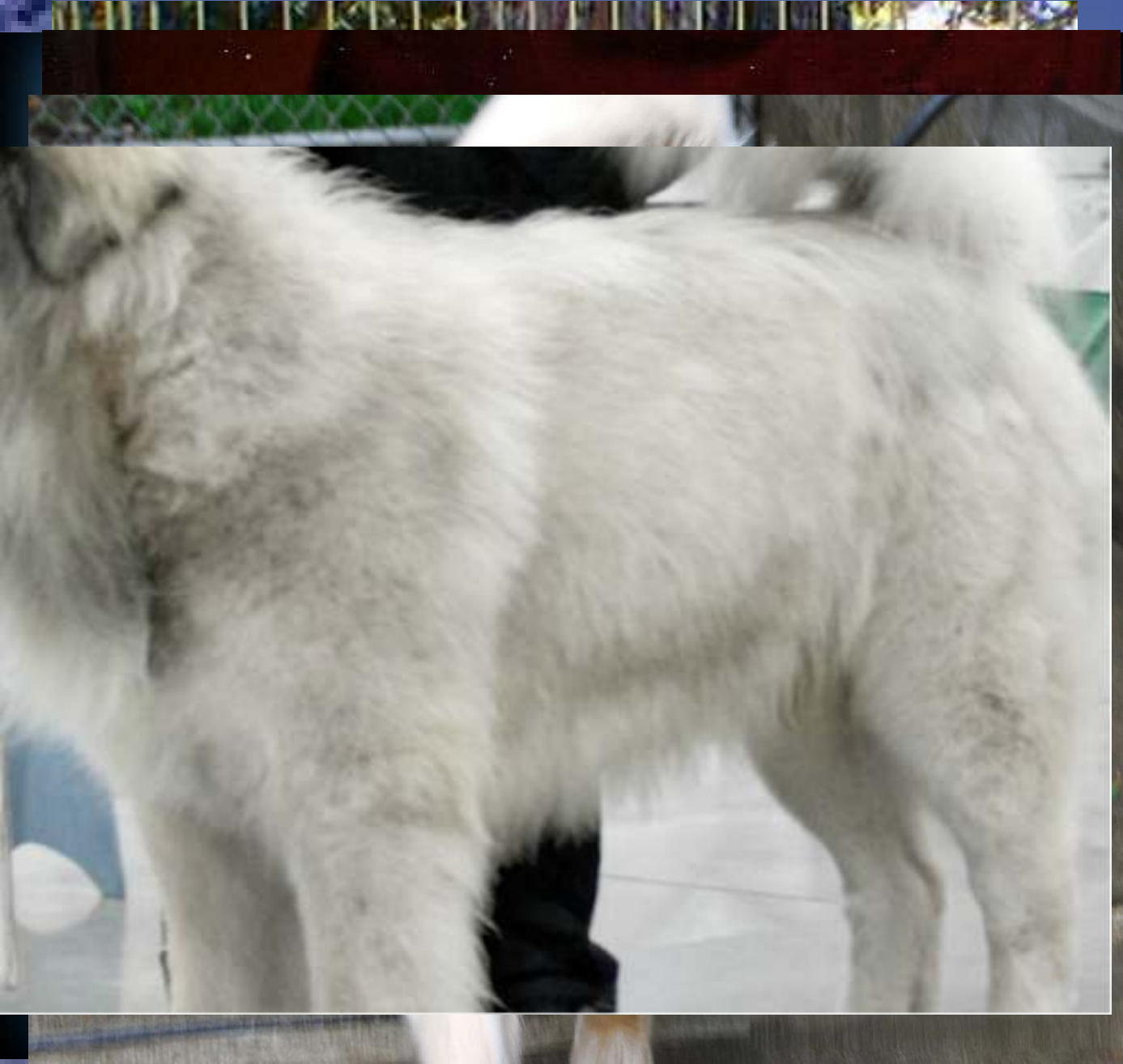
Color



Gold
(ranging from a pure golden to a rich red gold)

Sabbling, other than wolf sable and sabbling in a saddle marked color pattern, is acceptable on gold dogs.

Color



Disqualification:
All other colors,
including

White,

Cream,

Wolf Sable,

Brindle

Particolors

To be Faulted:

Large White
Markings

Gait



The gait should be powerful, yet remarkably light-footed with an appearance of effortlessness.

Proper movement should have a lightness, uncharacteristic of a like size breed.

Temperament



Highly Intelligent

Independent

Strong Willed

Reserved

Temperament



Aloof with Strangers

Highly protective of his charges and his property

Temperament



In the ring he may exhibit reserve or lack of enthusiasm.

However, any sign of shyness is unacceptable and must be severely faulted as inappropriate for a guardian breed.

Disqualifications

Dogs under 25 inches (and 18 months or older).

Bitches under 23 inches (and 18 months or older).

Undershot or overshot bite.

Disqualification: All other coat colors (e.g., white, cream, wolf sable, brindle and particolored) and markings other than those specifically described, to be disqualified.









Copyright © ATMA 2012

