

Treeing Walker Judges Seminar

Courtesy of the National Treeing Walker
Coonhound Association



Learning Objectives

- History of the Treeing Walker Coonhound
- Purpose of the Treeing Walker
- Head to Tail anatomical study of the Treeing Walker
- Comparison of Treeing Walker & Am/Eng Foxhound



History of the Treeing Walker

- Developed from certain strains of English/Walker Foxhounds
- Original registered with UKC, along with the Bluetick coonhound, as English coonhounds
- Recognized in 1945 as a separate breed
 - First as Walkers(Treeing)
 - Finally as Treeing Walkers

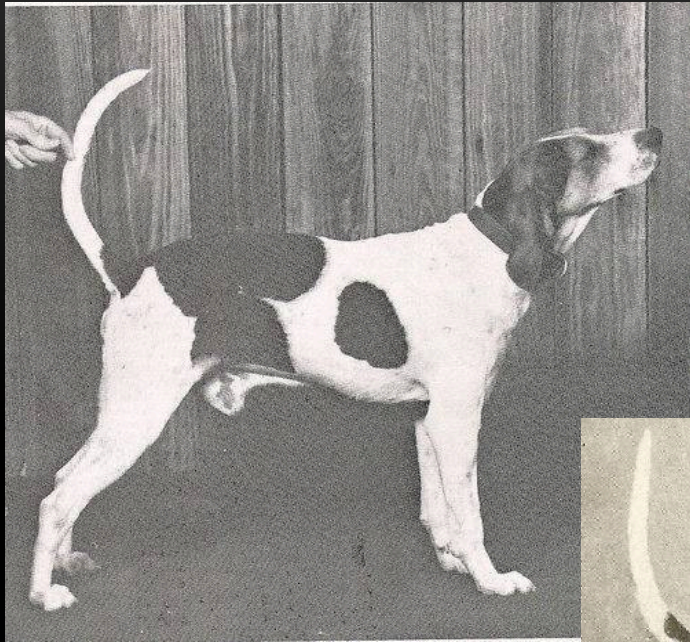


- Stolen from a deer chase in TN
- Instrumental in both American Foxhound & Treeing Walker history
- Seen with ,L-R, George Washington Maupin & William J. Walker
- Resembles the Black & Tan coonhound
- Highlights on Forelegs & Toes
- Not a typical foxhound of the day
- Extreme game sense

Tennessee Lead



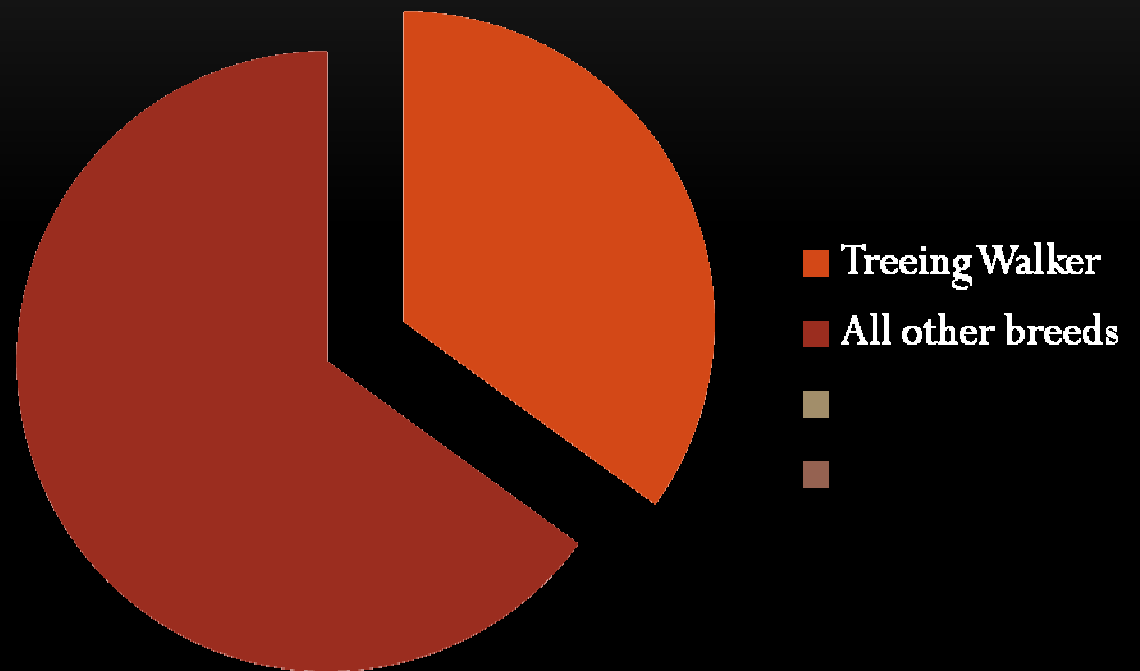
History of Treeing Walker



History of the Treeing Walker

- NOT A RARE BREED
- Nearly 70% of dogs registered with UKC are coonhounds
- 50% of those are treeing Walkers

APPROXIMATE UKC Registered Treeing Walkers



Purpose of the Treeing Walker

- The Treeing Walker coonhound was founded and has become dominant because of its ability to run and tree game.

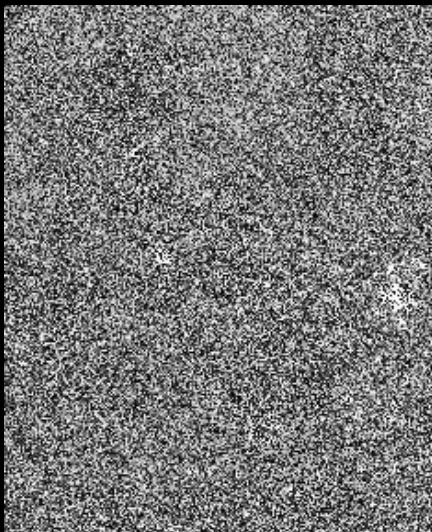


- While versatile, the Treeing Walker coonhound is first & foremost hunting dog



Purpose of the Treeing Walker

- First UKC Licensed Nite Hunt held in 1954
- Treeing Walker is the ideal hound to compete in these events
- Treeing Walkers are used in the pursuit of Big Game however competitive Nite Hunts provide the vehicle in which these hounds truly shine

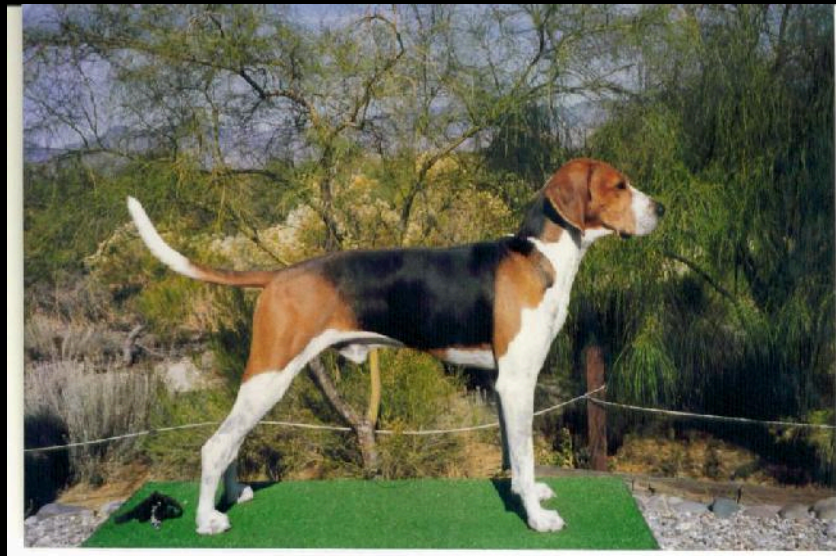


Nite Hunts

- Striking, Trailing and Treeing Raccoons
 - Striking- Opening on the trail of the intended game
 - Trailing- Following the scent and the game to seek refuge
 - Treeing- Baying the raccoon in its place of refuge(tree)
- 1 to 2 hours in length
- Most points wins
- Fast, athletic hounds with the ability to rapidly locate, put direction to tracks and tree with great accuracy, on a consistent basis, win

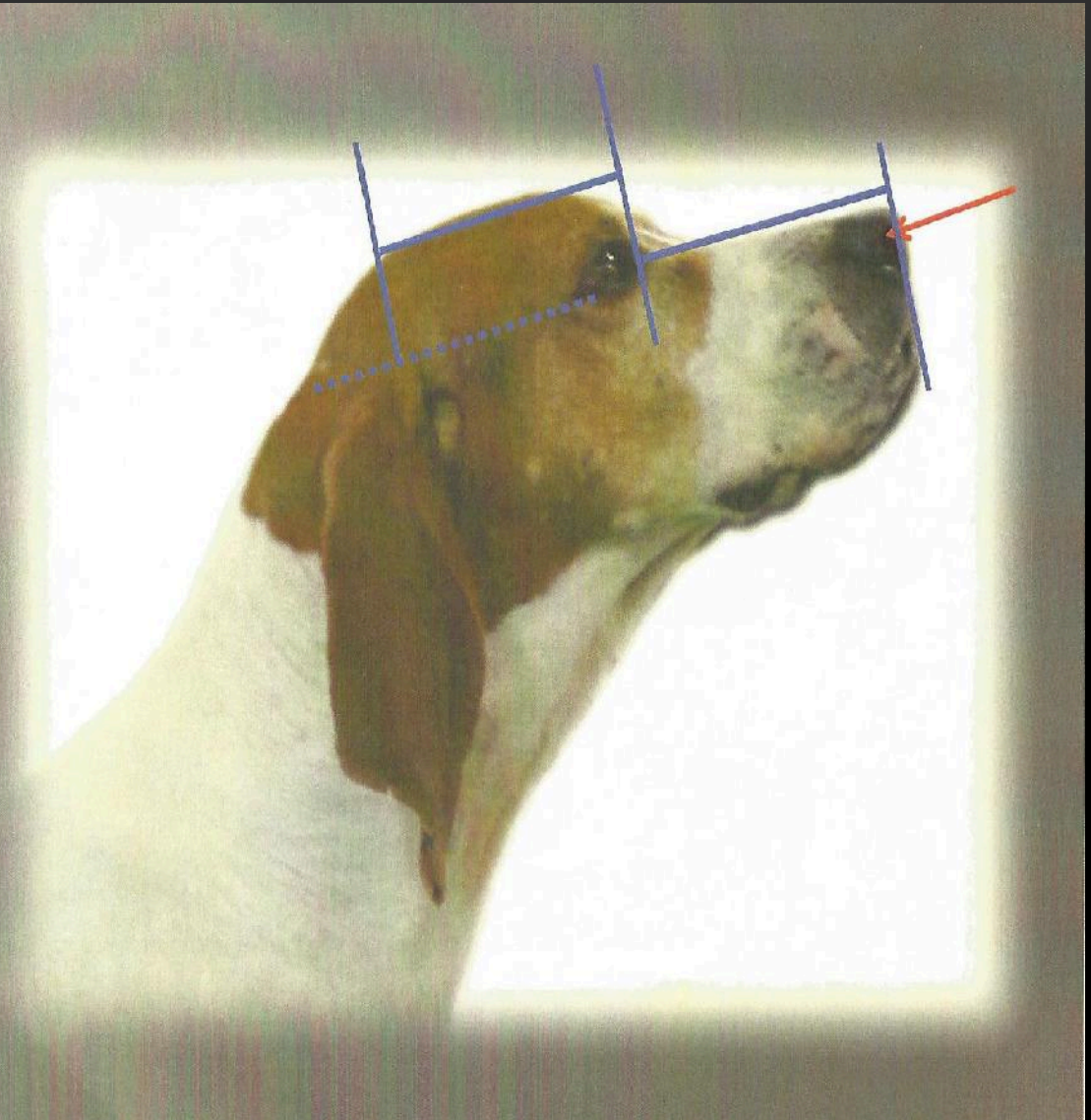
The Treeing Walker

- Overall look of athleticism
- Look of speed without raciness
- Confidence
- Extremely versatile



• Judging the Head

- SKULL
- TEETH AND BITE
- EYE SHAPE
- EYE COLOR
- EXPRESSION
- NOSE
- EARS



Head cont'd



Head cont'd



Treeing Walker Head review

- Skull- broad & full, occiput bone prominent
- Ears- gracefully hanging, moderate set and length; proportionate
- Eyes- dark in color(brown/black; expressive, set well apart
- Muzzle- medium square, moderate stop
- Nostrils- black, large & prominent
- Teeth- should meet; neither over/under shot
- Defects-
 - flat, narrow skull
 - Long, snippy muzzle
 - Short, high set ears

Treeing Walker Neck/Throat

- Throat
 - Free and clean from folds of skin
- Neck and throat
 - Free rising from shoulders, substantial but NOT loaded
 - Balanced length



Neck/Throat cont'd



PART 2: THE FRONT

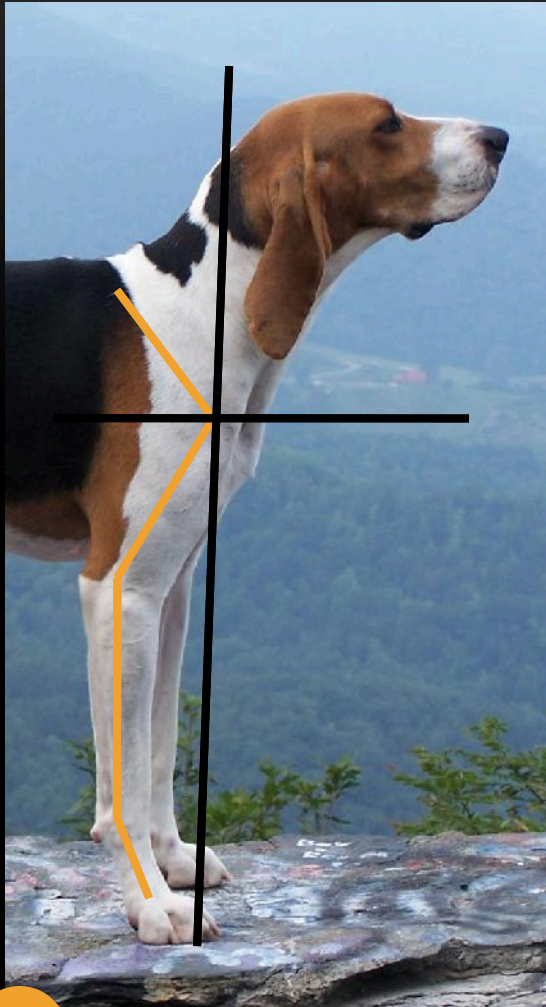


TW Forelegs

- Straight
- Moderate bone/substance
- Pasterns short & slightly sloping



TW Forelegs cont'd



TW Forelegs cont'd

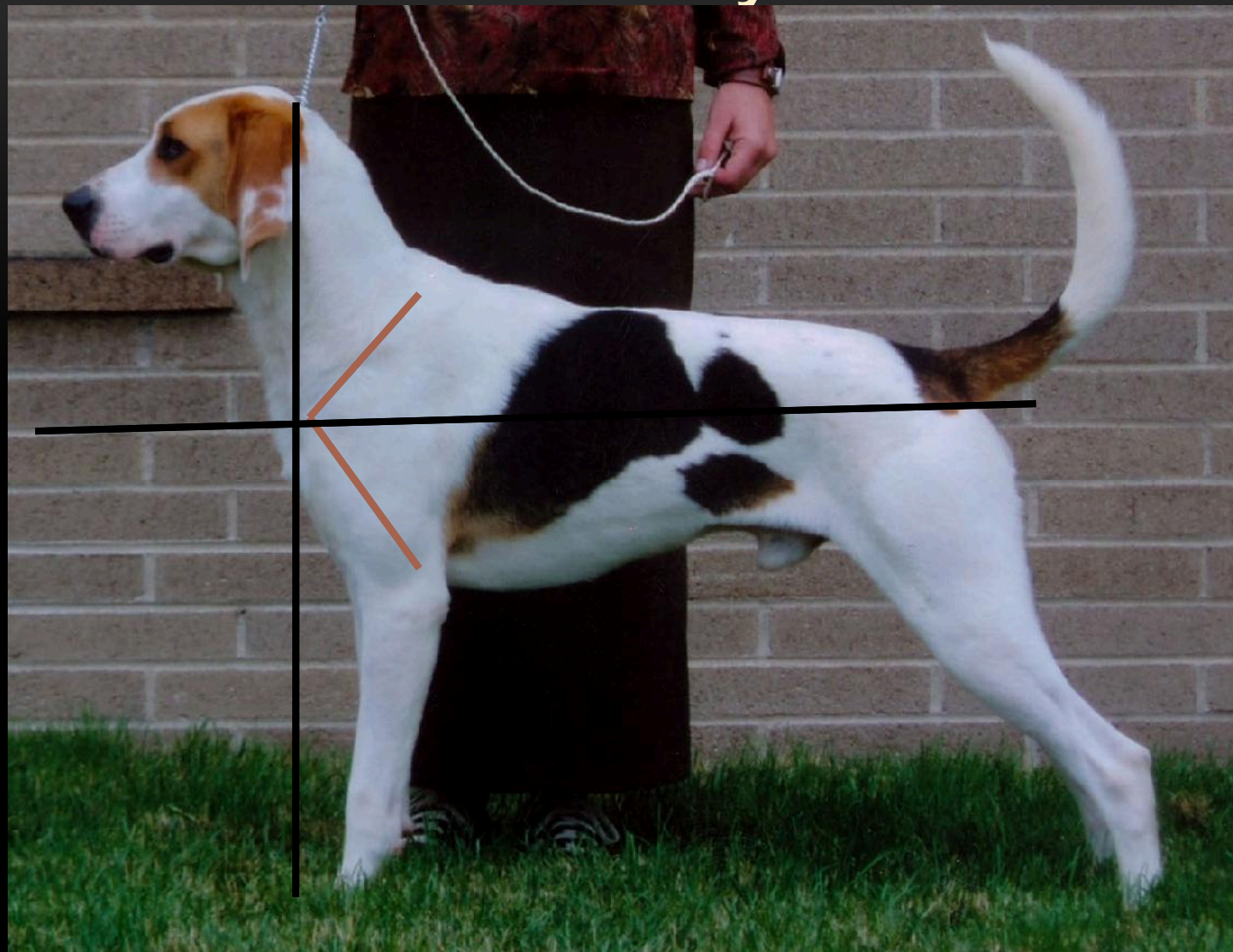


Shoulders, Chest & Ribs

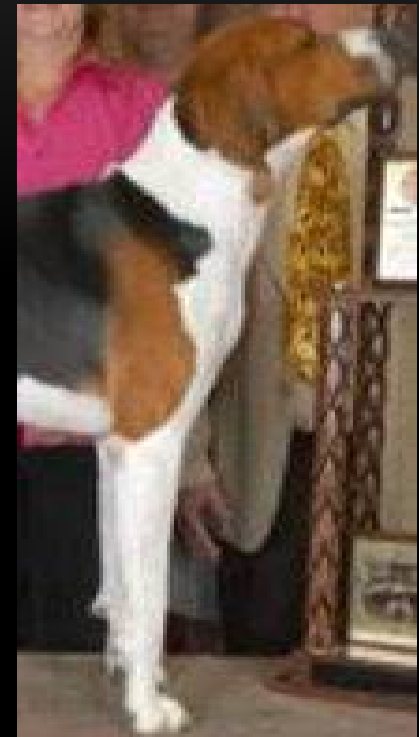
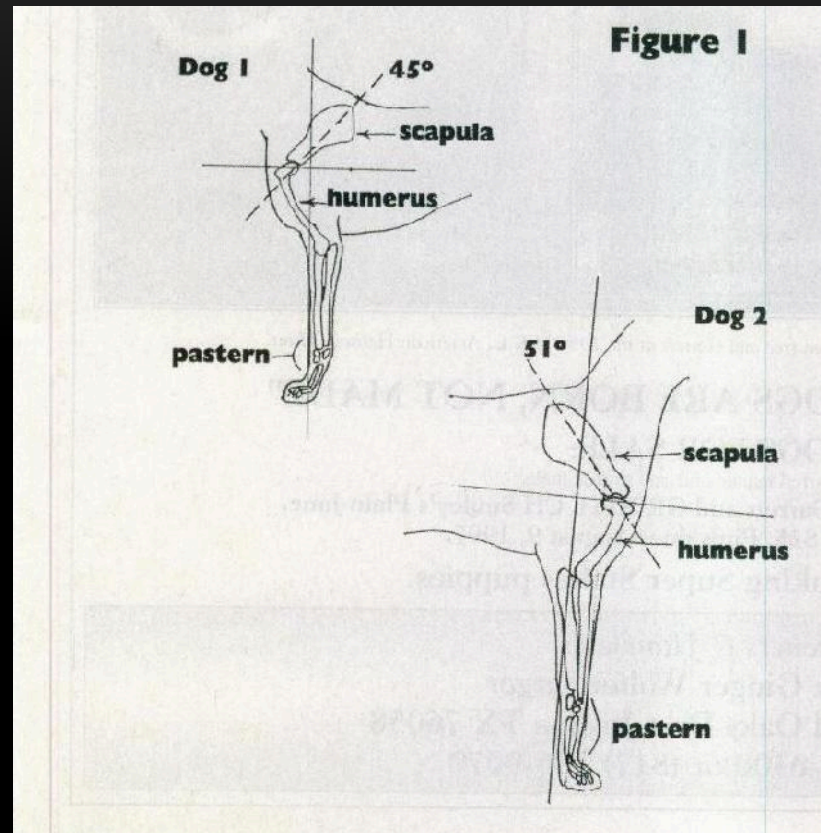
- Sloping, Clean & Muscular
- Not loaded or heavy
- Deep chest
 - Depth rather than width



Shoulder Assembly



Front Angles

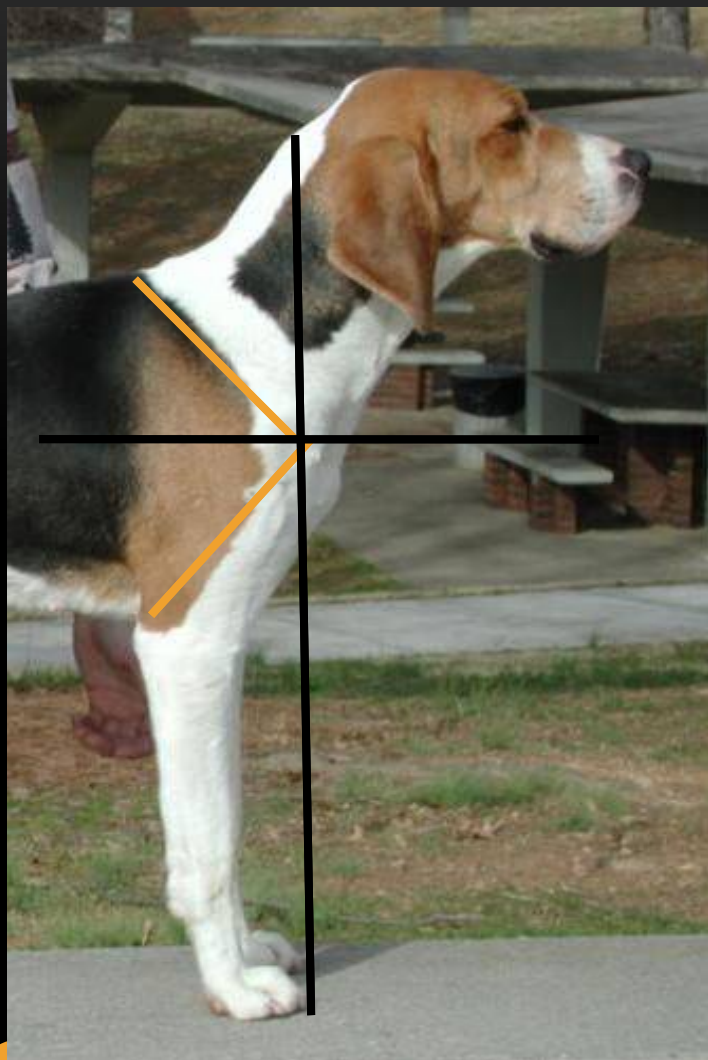


Shoulder Assembly

- Shoulders & Forelegs are the shock absorbers & steering wheel for hounds
 - Shoulder & Upper Foreleg should be at a 45 degree angle
 - 45 degrees to the ground NOT necessarily each other
- Near perfect front assembly on dog at right.



Shoulders



Shoulder Assembly

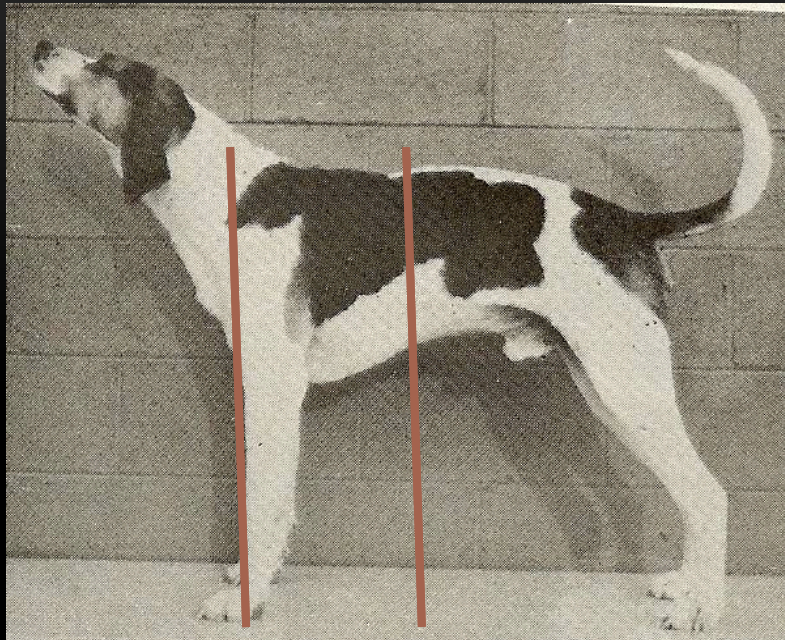


Chest

- Deep & well sprung
- Reaches elbow
- Depth over width
- Back ribs extend well back
- Tuck up is moderate



Chest

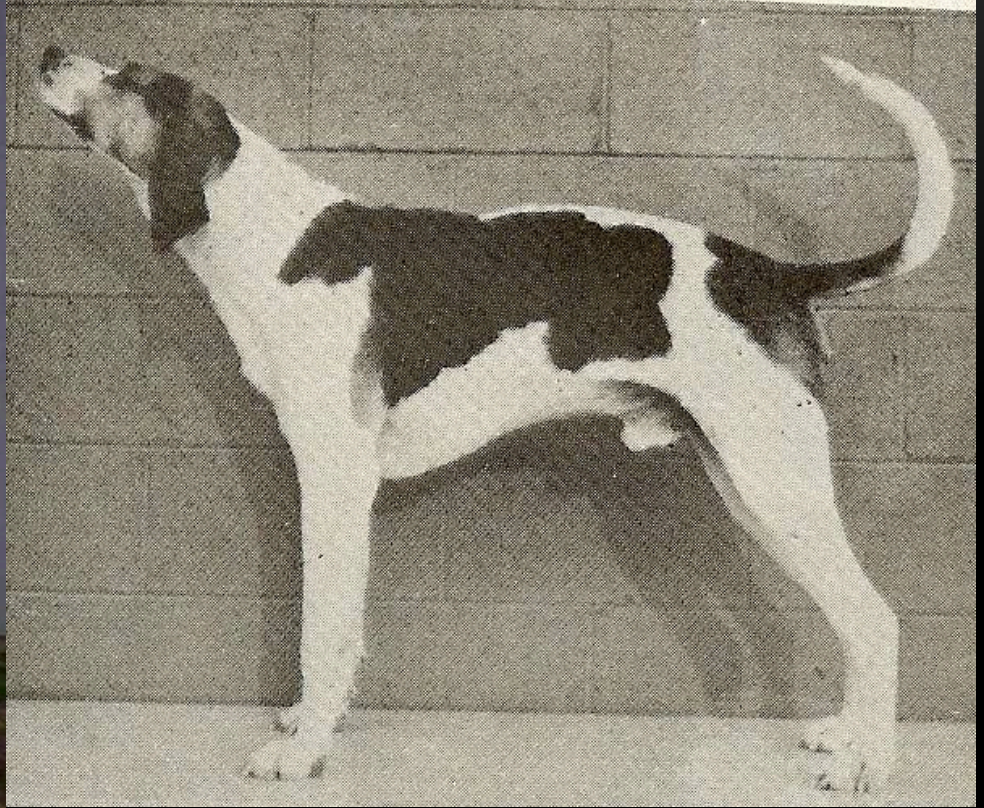


Back & Loins

- Moderately long
- Muscular & strong
- Loins broad & slightly arch



Back

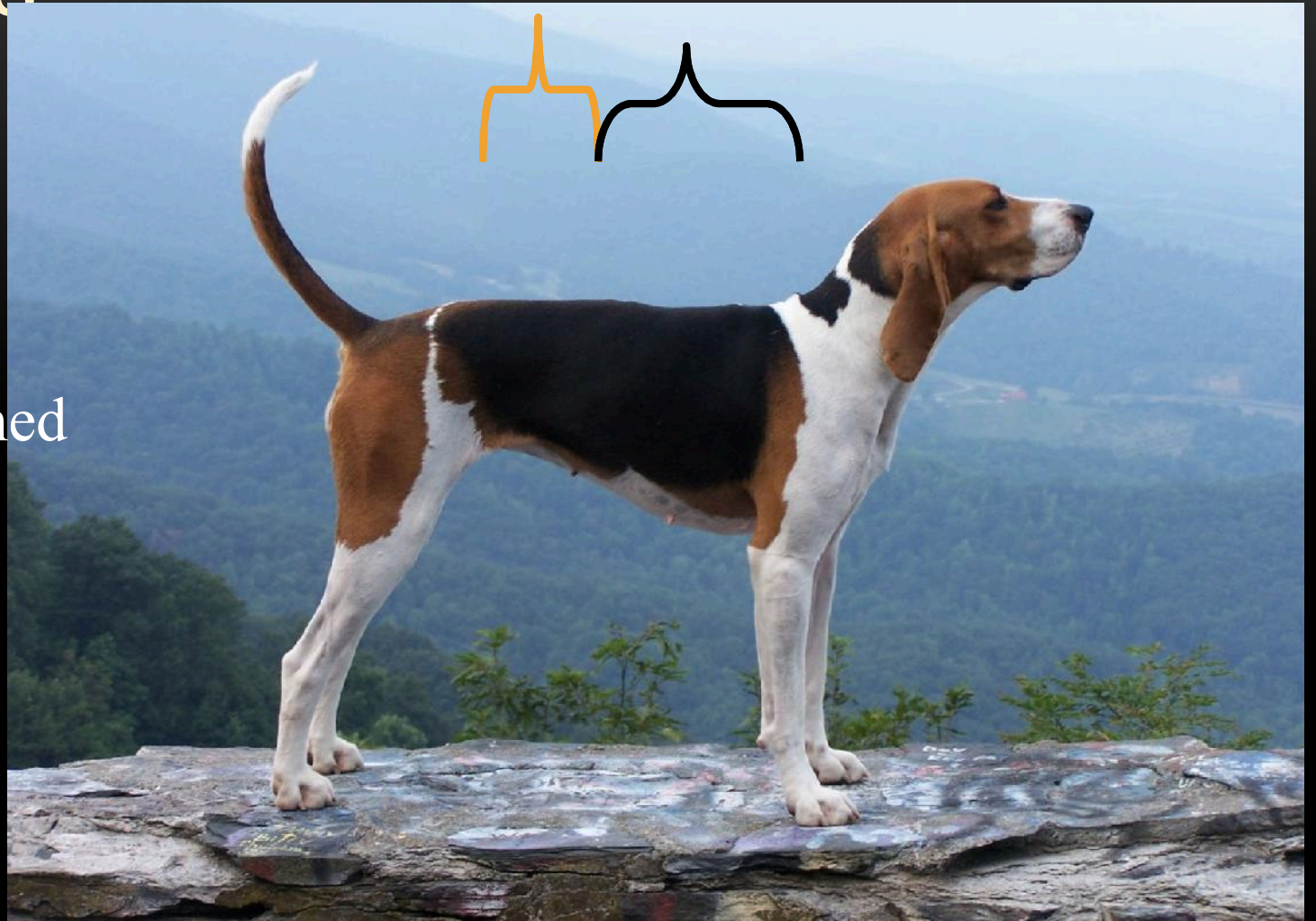


Back



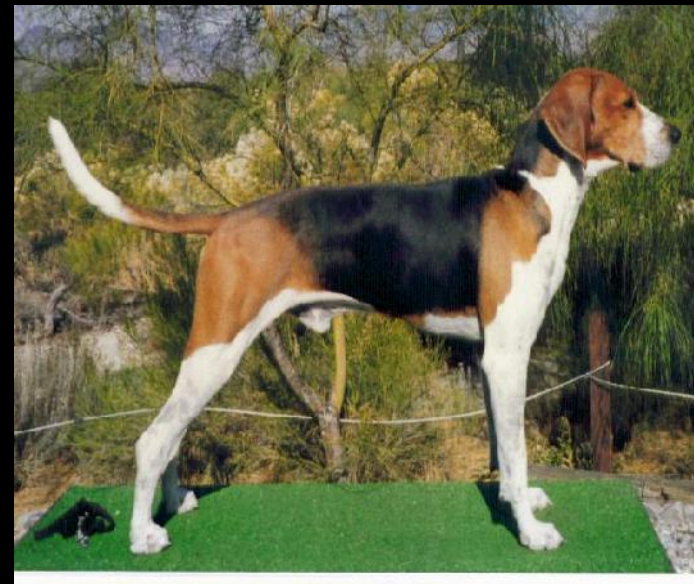
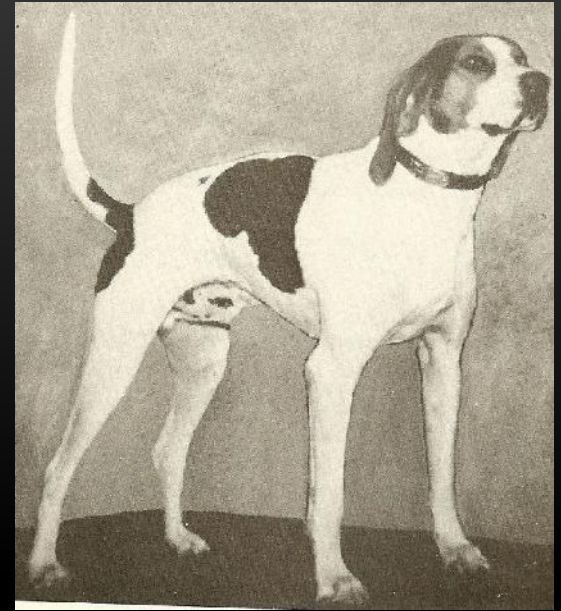
Loins

- Loin shorter than back
- Broad
- Slightly arched



Loins

- Strong, Wide, Never Flat or Narrow



TW Back & Loins Review

- MODERATION
 - Back
 - Long
 - **TOO long**
 - Muscular
 - **Swayed**
 - Strong
 - **Roached, flat**
 - Loins
 - Broad
 - Slight arch
 - Legs are straight when viewed from behind –no dewclaws

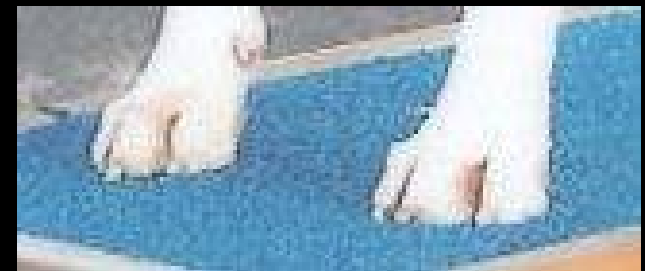
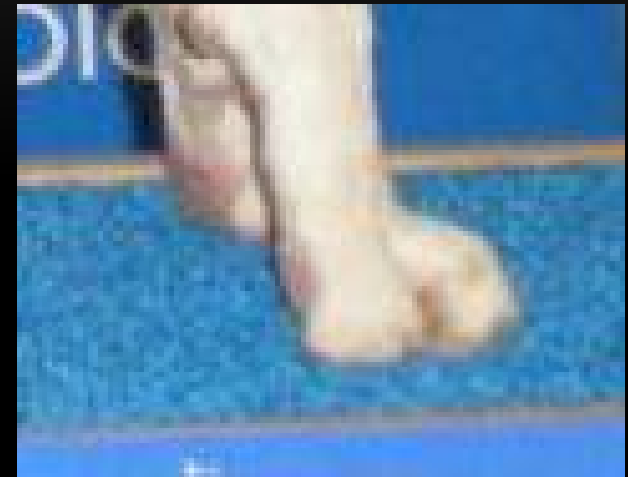
TW Feet

- Solid, Compact and Well padded

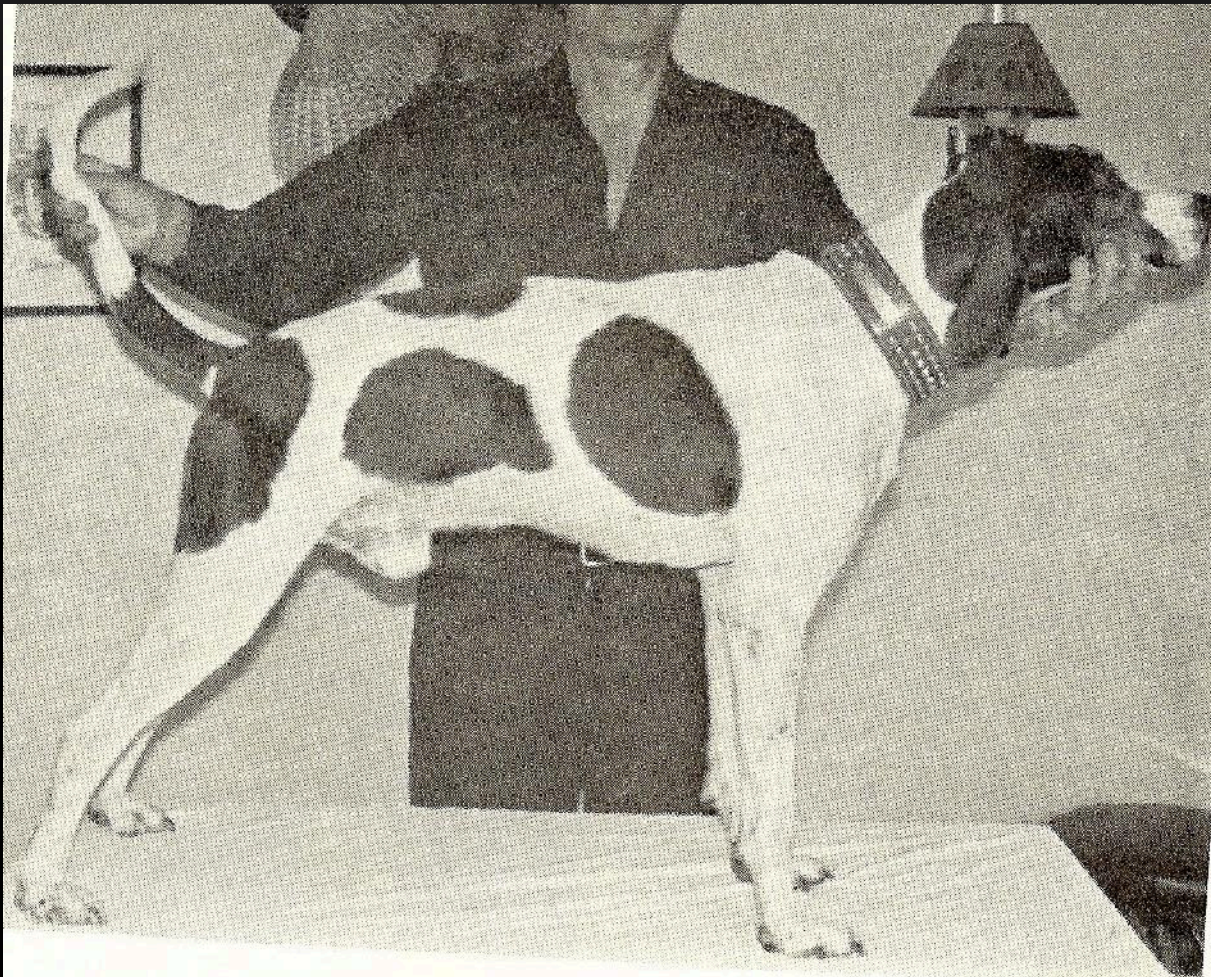


Cat-like appearance

- Well arched toes, strong nails for quick get away.

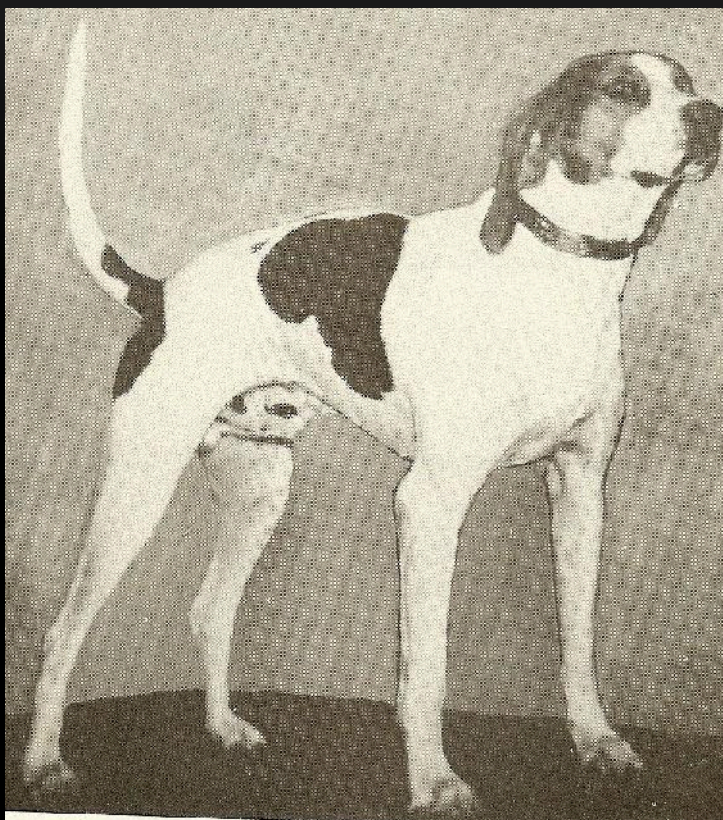


TW Feet cont'd

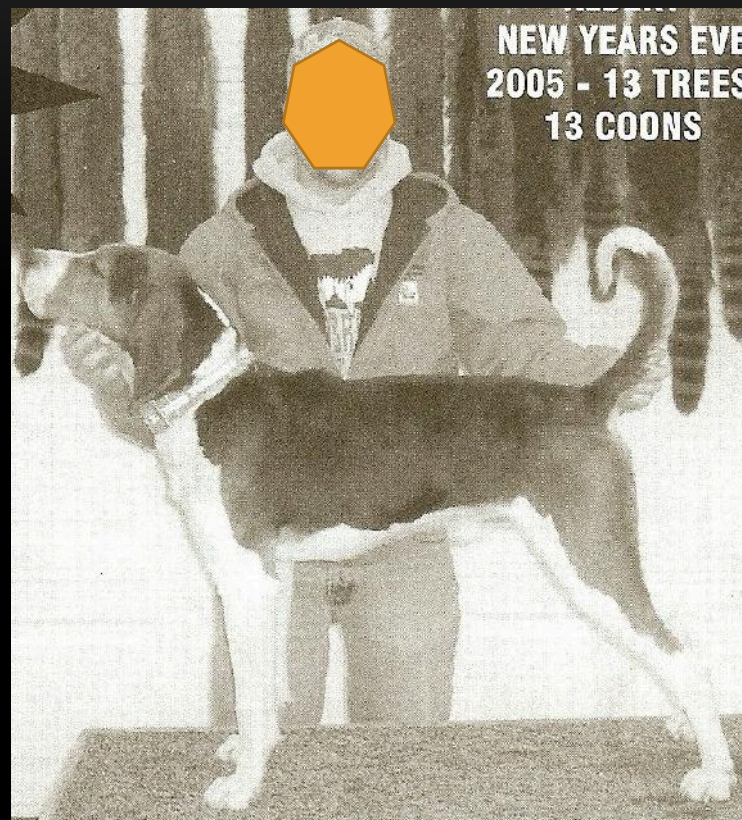


Coon-footed, flat feet.
SPLAYED-long toes

TW Feet cont'd



Flat feet – broken
down from hunting



Hunting dog-pretty
good feet

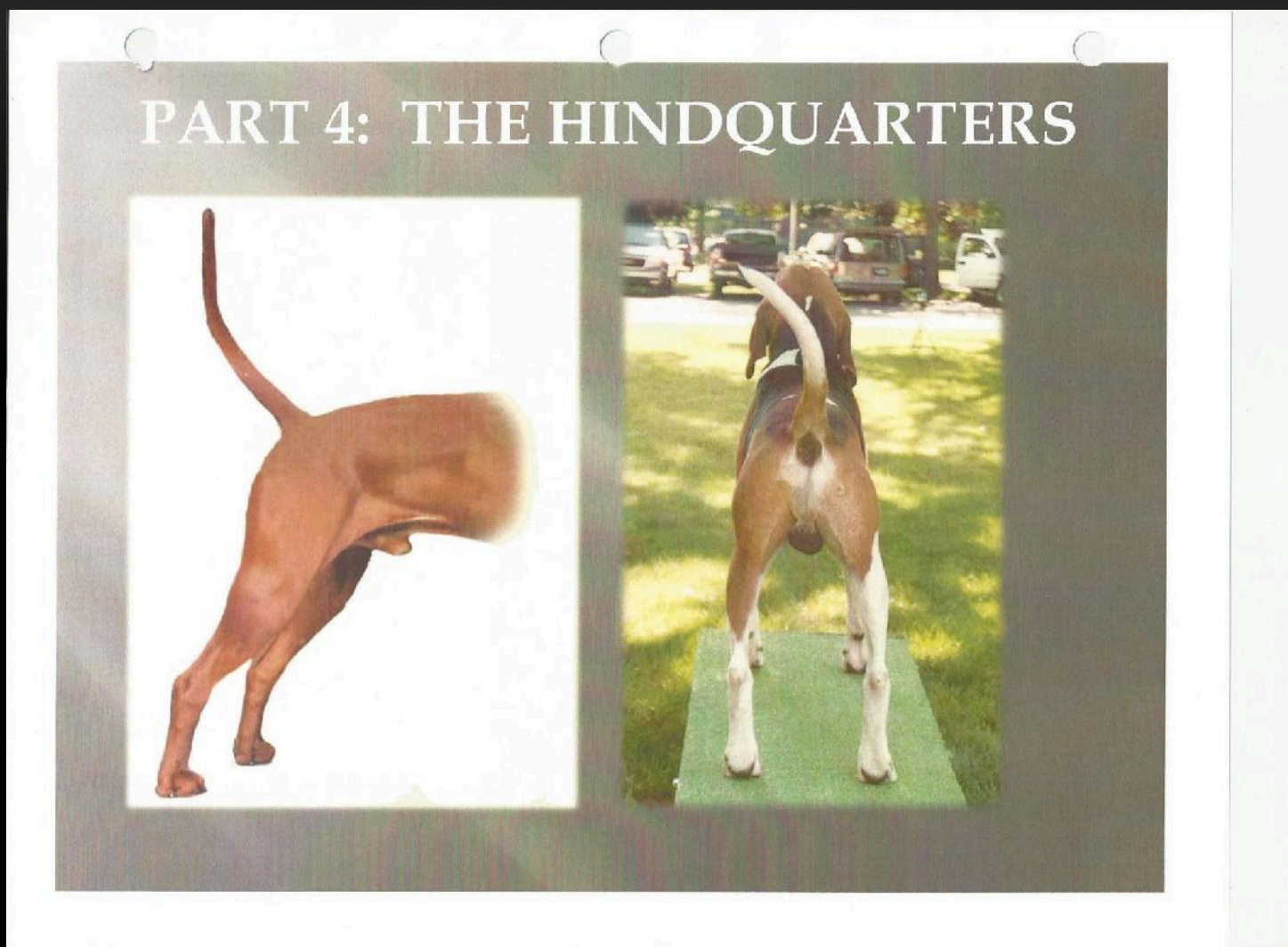
TW Feet



**Purina
Nite Hunt
Coonhound Points Event**



Rear Angulation



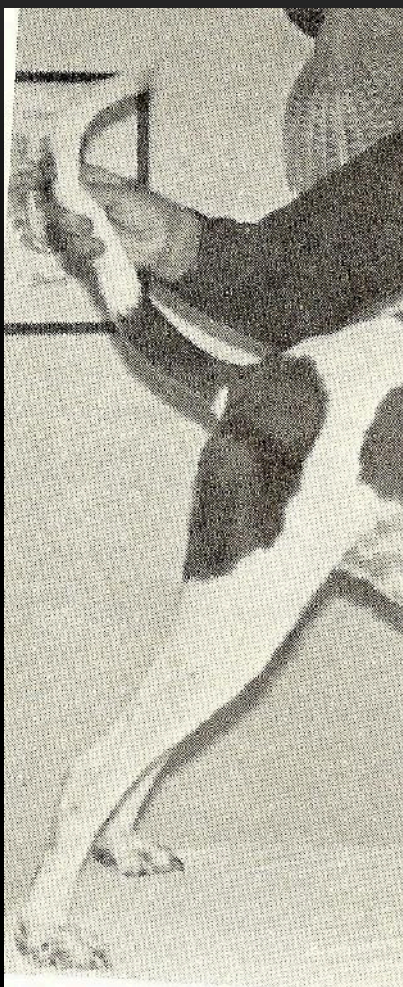
TW Hips, Thighs & Hind Legs

- Hips & Thighs strong and well muscled
 - **Lack of first/second thigh development**
- Abundance of propelling power
 - **Lack of muscle**
- Good turn of stifle
 - **Straight stifles**
- Hocks firm, symmetrical and moderately bent
 - **Cow hocks, sickle hocks or straight hocks**

TW Rear Assembly



TW Rear Assembly



TW Hips, Thighs, Hind legs Review

- Hips & Thighs strong and well muscled
 - **Lack of first/second thigh development**
- Abundance of propelling power
 - **Lack of muscle**
- Good turn of stifle
 - **Straight stifles**
- Hocks firm, symmetrical and moderately bent
 - **Cow hocks, sickle hocks or straight hocks**

TW Tail

- Set rather high coming off at mid croup
- Strong at root
- Tapered
 - **Rat tailed**
- Moderate in length
 - **Too long**
- Without flag
 - **Entire absence of brush**
- Carried freely, saber-like



TW Coat & Color

- Smooth & Glossy
- Fine but dense enough for protection
- Close, hard, hound coat
- Tri-Colored preferred (THREE Colors)
- White may be the predominant color with black spots/tan trim
- Black may be the predominant color with white/tan trim
- White with black spots or white with tan spots is accepted

TW Coat & Color



TW Height, Weight & Character

- Height Males- 22”-27”, Females- 20”-25”
- Weight in proportion to height: NOT to be penalized if underweight
- Balance is key with all parts together in proper balance to form overall dog
- Characteristics
 - Energetic & Intelligent ,courageous, courteous, desire to perform
 - Graceful while posed & in motion





*English Foxhound, American Foxhound,
Treeing Walker Coonhound*



Am Foxhound, Treeing Walker Coonhound,
English Foxhound.



Head TW vs Am Foxhound



- Treeing Walker has**
- 1. Slightly fuller muzzle**
 - 2. Square muzzle**
 - 3. More defined stop**



TW Chest vs Am Foxhound Chest



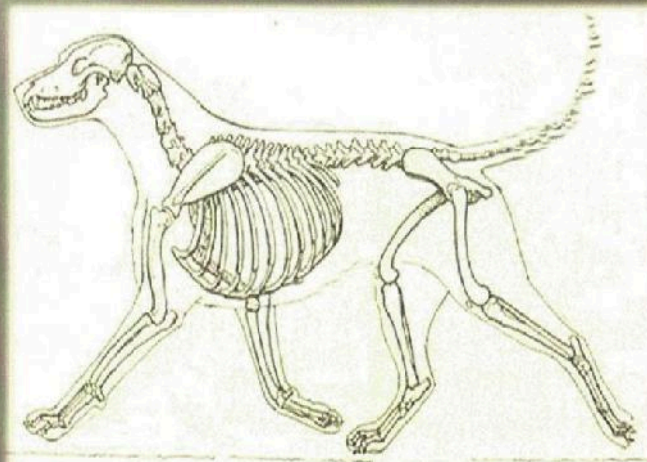
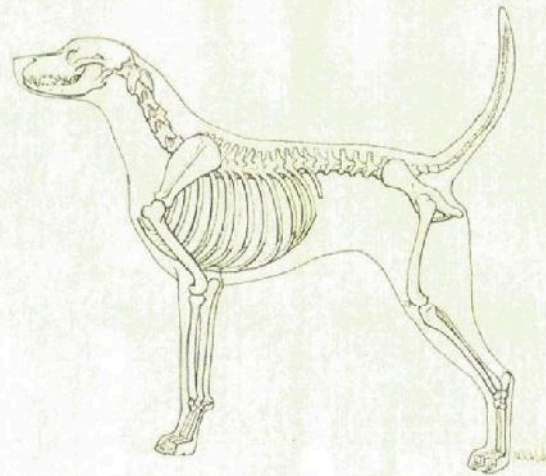
Loins TW vs Am Foxhound



FORM AND FUNCTION BONE AND SUBSTANCE

FORM AND FUNCTION

- Part 1: Head
- Part 2: Front
- Part 3: Body
- Part 4: Hindquarter
- Part 5: Movement



Energetic Treeing Walker



Gaiting/Movement



Questions???

