

A Comprehensive Study Guide to the Conformation Breed Standard for the **BLUETICK**

A presentation by Steve Fielder, AKC Coonhound Events



AMERICAN
KENNEL CLUBSM

COONHOUND BREEDS



Plott Hound
(AKC)



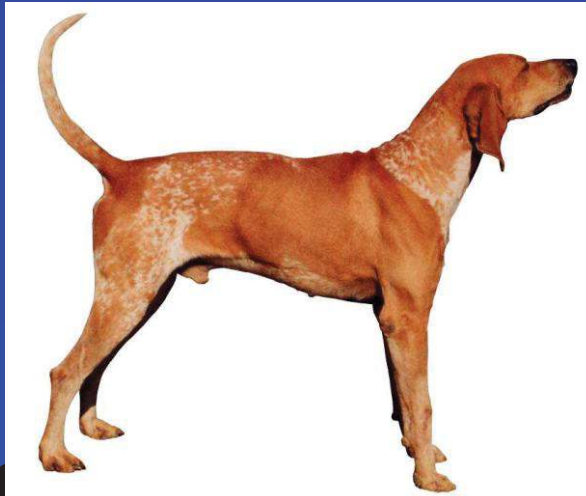
Redbone
(Miscellaneous)



Treeing Walker
(Miscellaneous)



Black & Tan
(AKC)



American English
(FSS)



Bluetick
(Miscellaneous)

HOW IT BEGAN

- Coonhounds were developed from colonial foxhounds
- Coonhounds became the tool of the pioneers and evolved into a popular pastime
- Coonhound field trials became popular at the turn of the 20th Century
- Nite Hunts established in 1945 and continue today as the most popular coonhound event
- Coonhound Bench Shows were first held in the 1940's at a Labor Day event called Leafy Oak in Kenton, Ohio.

THE KENTON NATIONAL

FRIDAY SEPTEMBER 3 SATURDAY SEPTEMBER 4
 SUNDAY SEPTEMBER 5 MONDAY—LABOR DAY SEPTEMBER 6

SIX MILES SOUTH OF . . .

KENTON, OHIO

ON STATE ROUTE 292.

*The World's Largest Field Trial
 And Coon Dog Meet!*

Make your vacation plans NOW and meet more dog men here than any place!

This Is No Saturday Afternoon

\$50,000 PURSE
\$6,000 IN GUARANTEE

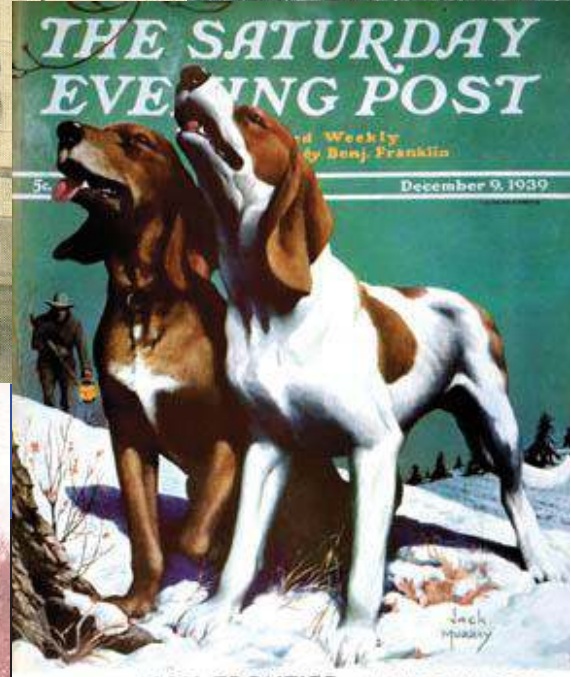
1350 Dog Entered In

\$1500 FIRST
 THIS FINAL FOR DOGS THAT WIN
 1st TREE \$500
 And Beautiful Trophy
 2nd TREE \$250
 And Beautiful Trophy

\$1000 SECOND
 THIS FINAL FOR SECOND DOGS
 And Beautiful Trophy
 1st TREE \$300
 And Beautiful Trophy
 2nd TREE \$150
 And Beautiful Trophy

RACE START
 DOGS WILL RUN
 \$100 HEAT MONEY
 1st Tree \$40
 2nd Tree \$20
 \$100 SEMI MONEY
 we will run up to
 1st TREE \$40
 2nd TREE \$20
 \$100, \$250 &

NOMINATION FEE
 first dog race
 23, 1945, AT 5:00
 ADMIS



BEGINNING HIGH FRONTIER By LELAND JAMIESON

Second Annual
 NCA LICENSED
REDDON DAYS
 FRIDAY NIGHT, APRIL 3 . . .
 GRADE HUNT 8 P.M.
 3-HOUR CAST - TEN TROPHIES
 APRIL 4 . . . 2:30 P.M.
 BENCH SHOW
 SATURDAY NITE, APRIL 4
 BENCH HUNT 8 P.M.
 REGISTERED FIELD TRIAL . . .
 5 . . . 10 A.M.
 GRADE HUNT REGISTERED
 1st and 2nd Tree and Tree in Each
 Division.
 ENTRY FEE \$5.00
 BARNHART'S
 SAVE MORE MARKET
 Millersburg, Ohio
 WAYNE DOG FOOD
 A.E. Shute and Son Livestock
 Redrockburg, Ohio
 HEIDL'S
 BEOROME KENNELS
 3014 S. Campbell Street
 ALDERMAN HARDWARE
 C. E. Anderson, Owner
 Killbuck, Ohio
 ANDESSON, SOUTH CAROLINA
 JOHN MAREY
 HOLMESVILLE, Ohio
 K&R ASHLAND SERVICE
 Phone 729-2192
 Holmesville, Ohio
 BARNHART'S
 SAVE MORE MARKET
 Millersburg, Ohio
 WAYNE DOG FOOD
 A.E. Shute and Son Livestock
 Redrockburg, Ohio
 HEIDL'S
 BEOROME KENNELS
 3014 S. Campbell Street
 HAYTON'S BARBER SHOP
 ANN HILTON, Owner
 Steuben, Ohio
 MICHIE'S SUPER MARKET
 Fred Michie, Owner
 Millersburg, Ohio
 Phone 674-1911
 Millersburg, Ohio
 THE HILL HOTEL
 Phone 624-3190
 Millersburg, Ohio
 MIDNIGHT KENNELS
 FRED ANDERSON
 Duncannon, Pennsylvania
 MILLERSBURG HOTEL
 Phone 674-5815 and 674-5009
 Millersburg, Ohio
 RED BONE DOG FOOD
 Hubersville, Clayton,
 Holersville, Ohio
 PAUL JAMESON
 General Merchandise
 Holmesville, Ohio

HISTORY

The modern Bluetick Coonhound descended from the Grand Bleu de Gascogne (French Staghound)



HISTORY



Blueticks were originally classified as English Coonhounds until 1945. Bluetick puppies and redtick puppies were born in the same litters. The blue ones were classified as Blueticks and the redticked ones as English

The Bluetick is a hunter...

- *Active, ambitious and speedy on trail*
- *Free-tonguer on trail*
 - *Medium “bawl” or bugle voice when trailing*
- *Steady “chop” when running*
- *Steady, coarse chop at the tree.*



General Appearance

- Speedy
- Well-muscled
- Never clumsy or overly chunky built
- Neat, compact body
- Glossy coat
- Clear, keen eyes
- Carries head and tail well up when in motion



SIZE



Males

Height: 24 - 27
inches at withers

Weight: 55 - 80
pounds

Disqualification:
Under or Over Height Standard

SIZE

FEMALES

Height: 21 – 25 inches at
withers

Weight: 45 – 65 pounds



Disqualification: Under or Over Height Standard

PROPORTION and SUBSTANCE



**Square or
slightly longer
than tall**

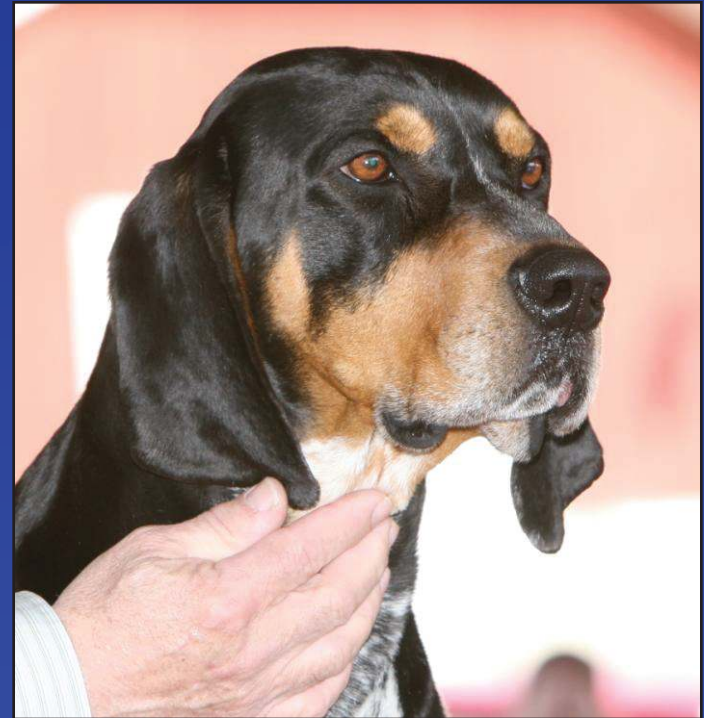
WEIGHT

Males – 55 to 80 pounds

**Females – 45 to 65
pounds**

Head

Broad between ears and slightly domed



- Prominent stop
- Length from occiput to end of nose:
Males: 9 – 10 inches
Females: 8 – 9 inches

MUZZLE



- Muzzle long, broad, deep
- Square in profile
- Flews cover line of lower jaw
- Depth of foreface 3 – 4 ½ inches

EYES

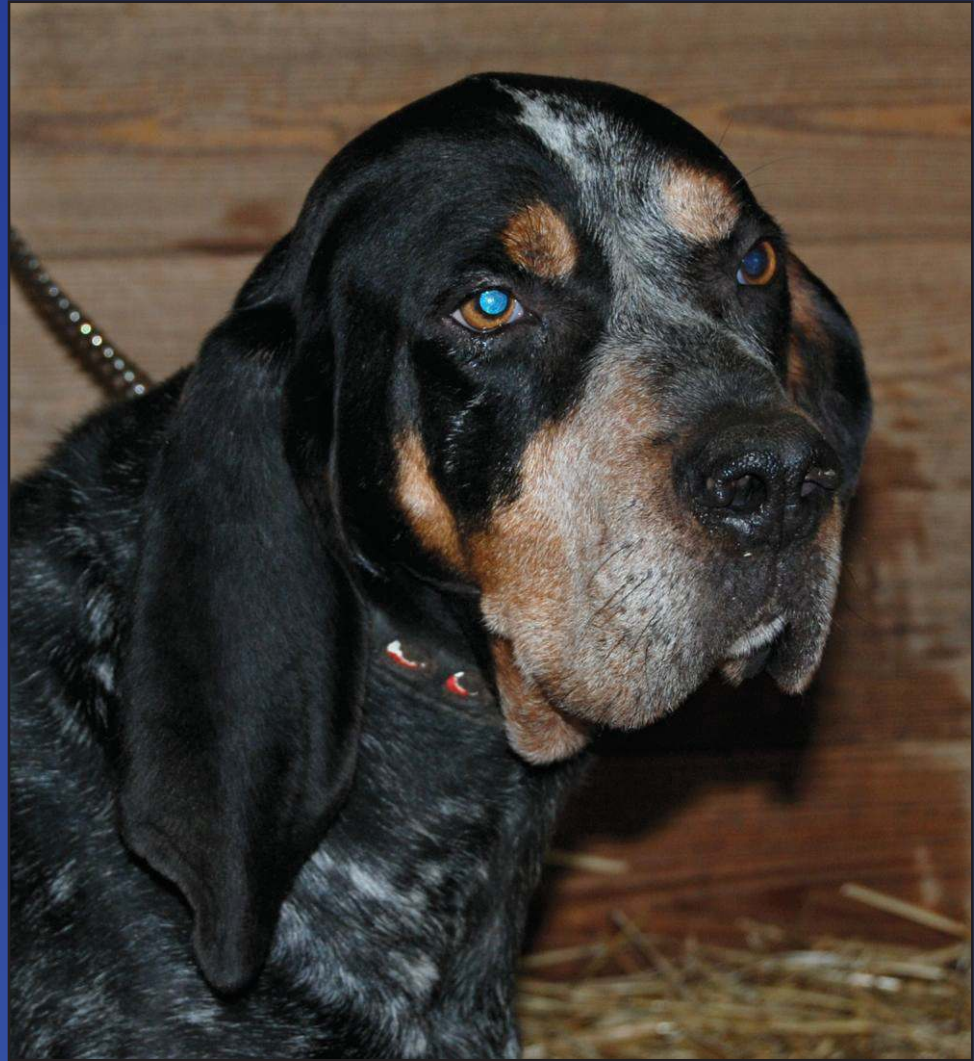
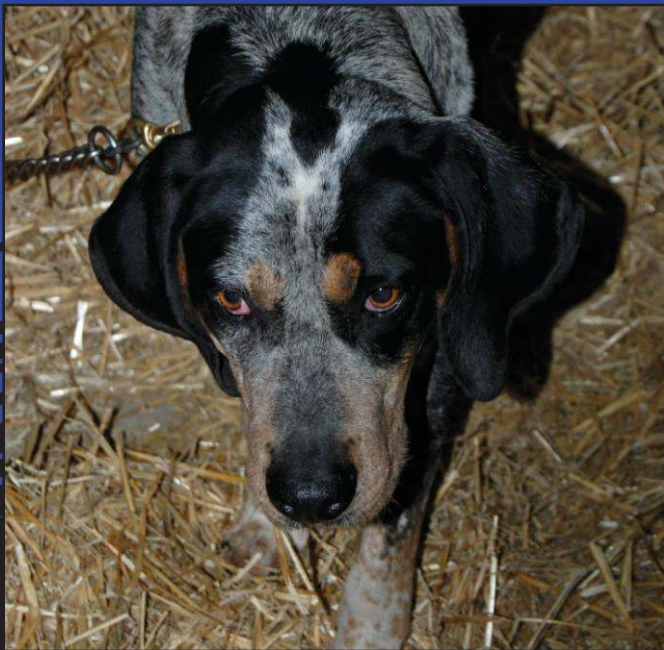
- Rather large
- Set wide
- Round
- Dark Brown



**Never lighter than light brown
in color**

EYES

**Eye rims tight
and close-fitting**



**No excess third
eyelid apparent**

Expression

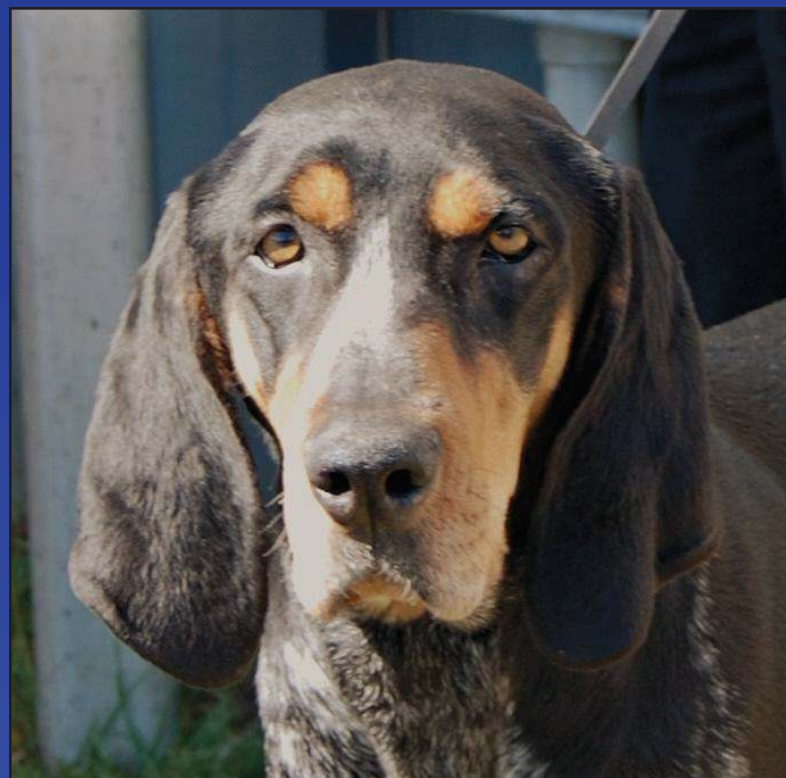
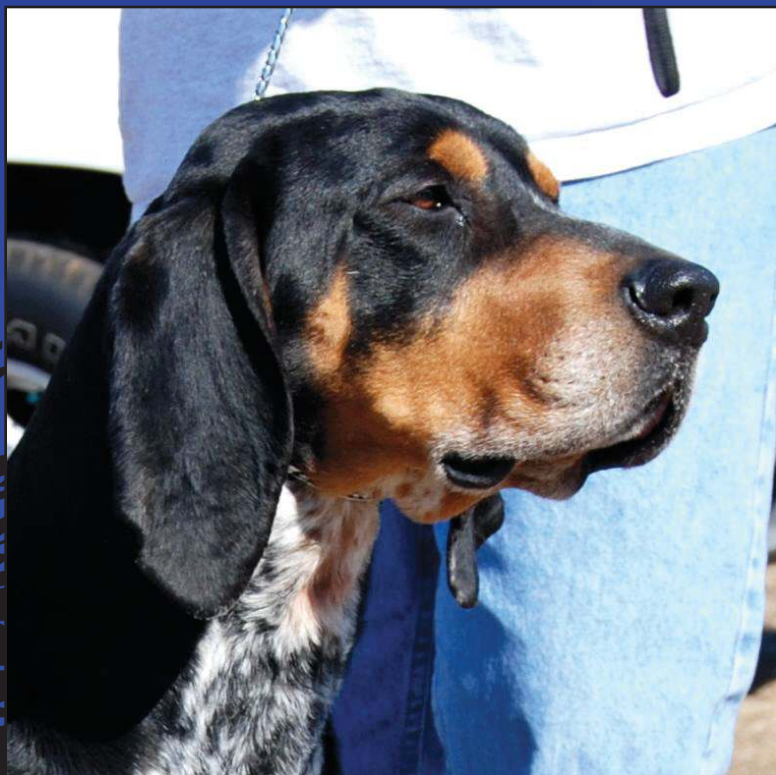
Typically
pleading
“hound”
expression

Never wild or
cowering



EARS

- SET LOW
- NO ERECTILE POWER



- Thin with slight roll – taper to point
- Reach well toward end of nose
- Well-attached to head to prevent hanging or backward tilt

Nose

- Large
- Well-opened nostrils
- Fully pigmented
- Black



Teeth



- Scissors Bite Preferred
- Even Bite Acceptable

Disqualification:
Undershot or Overshot

NECK

TOPLINE

BODY

- Neck muscular
- Moderate length
- Tapering slightly from shoulders to head
- Carried well up
- Not vertical (goose necked)
- Throat clean with slight trace of dewlap



NECK

TOPLINE

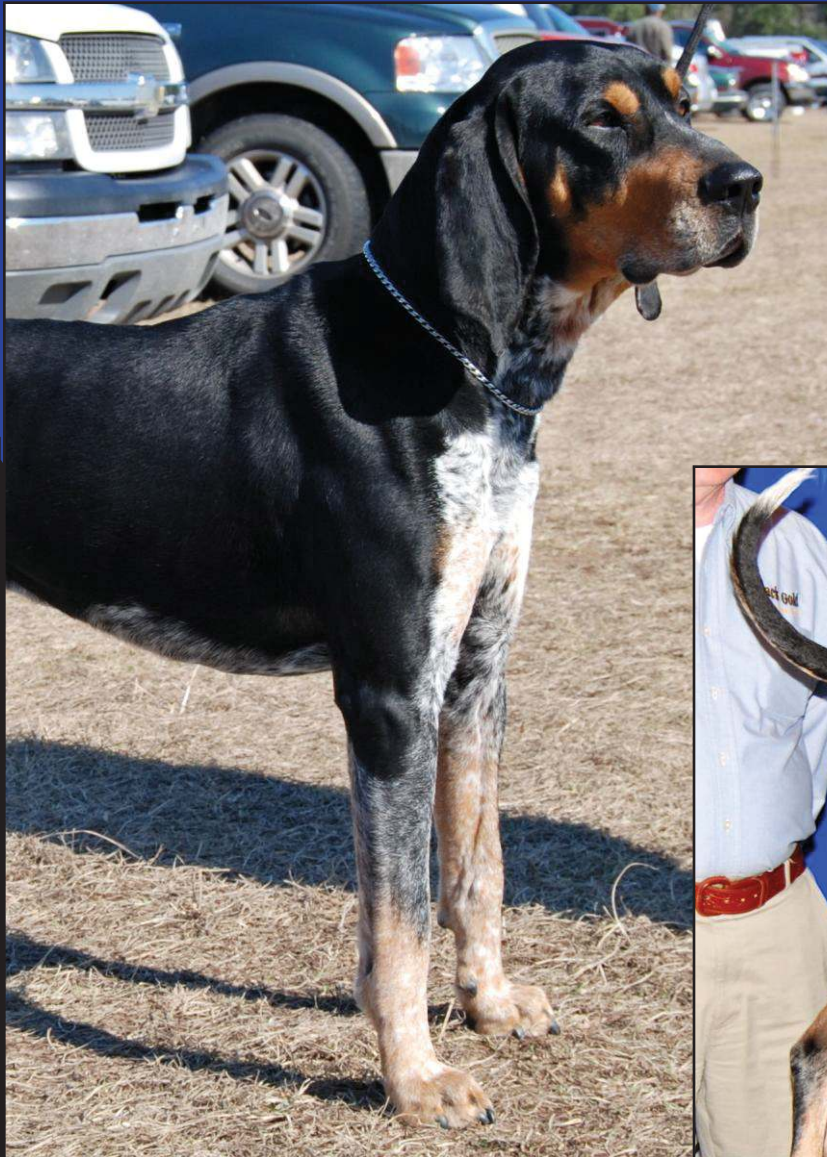
BODY

- Body shows considerable depth
- Extends well down toward elbow
 - Deep rather than wide
 - Plenty of lung space



CHEST

- Forechest is moderate
- Even with point of shoulder
- Girth – 26 to 34 inches males



CHEST

**GIRTH FOR
FEMALES**

23 – 30

INCHES



RIBS

**LONG
WELL
SPRUNG**



**TAPERED
GRADUALLY
TO A
MODERATE
TUCK-UP**

BACK

Topline slopes downward slightly from withers to hips



MUSCULAR

BACK

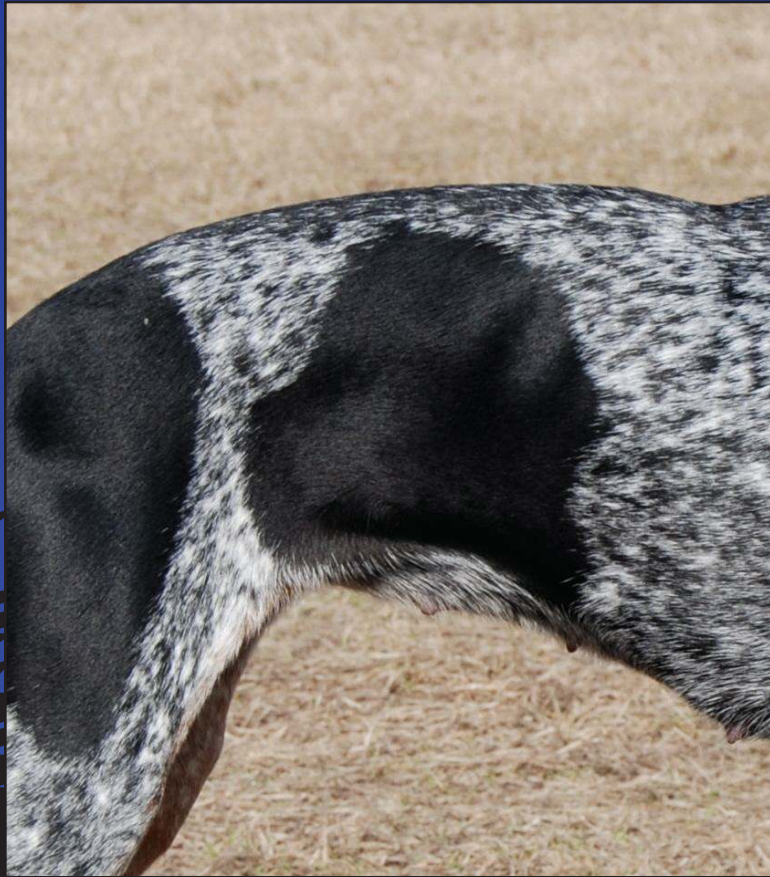


**FAULT:
SWAYED BACK**

**FAULT:
ROACHED BACK**



LOIN



- WELL-MUSCLED
- BROAD
- SLIGHTLY ARCHED



FOREQUARTERS

- LEGS STRAIGHT FROM ELBOWS TO FEET
- WELL-BONED AND MUSCULAR
- STRONG, STRAIGHT, SLIGHTLY SLOPING PASTERNS



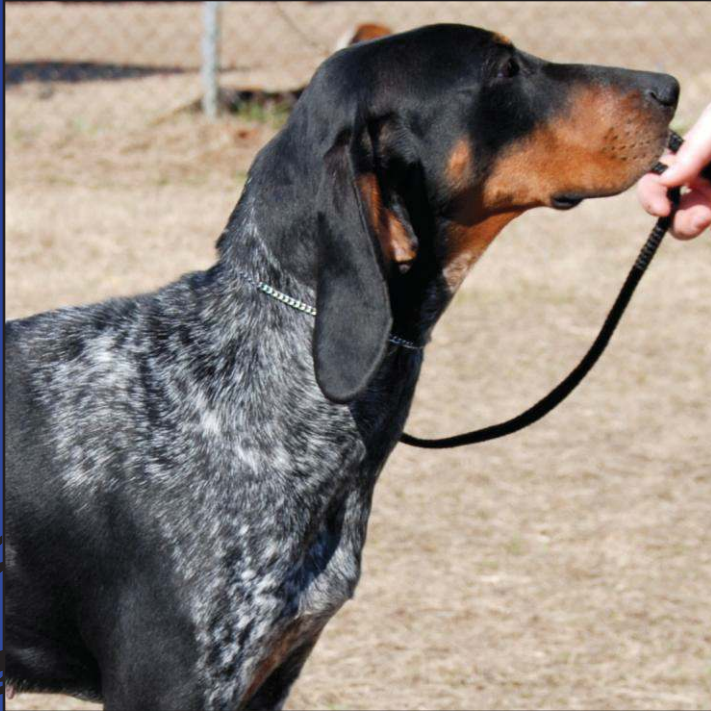
LEGS

- Length of leg from elbow to ground – $\frac{1}{2}$ of height at withers
- Legs appear straight from side or front view



SHOULDERS

**NOT TOO BROAD OR ROUGH
APPEARANCE OF FREEDOM
OF MOVEMENT AND
STRENGTH**

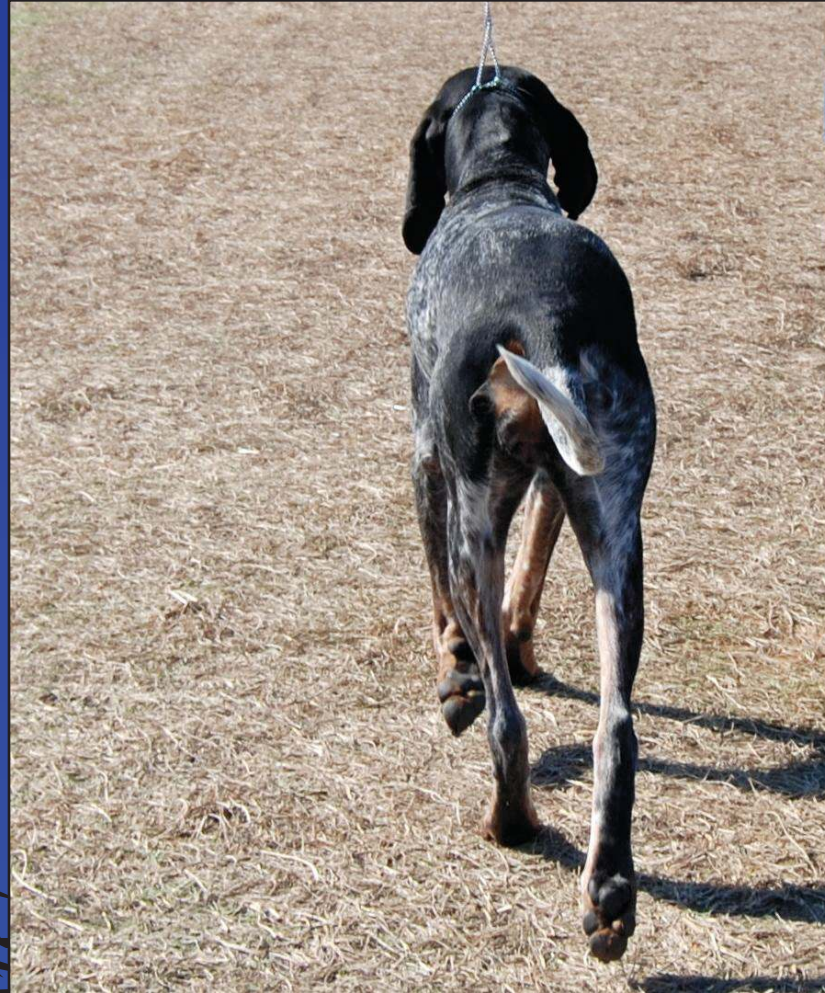


**CLEAN AND SLOPING
MUSCULAR**



HINDQUARTERS

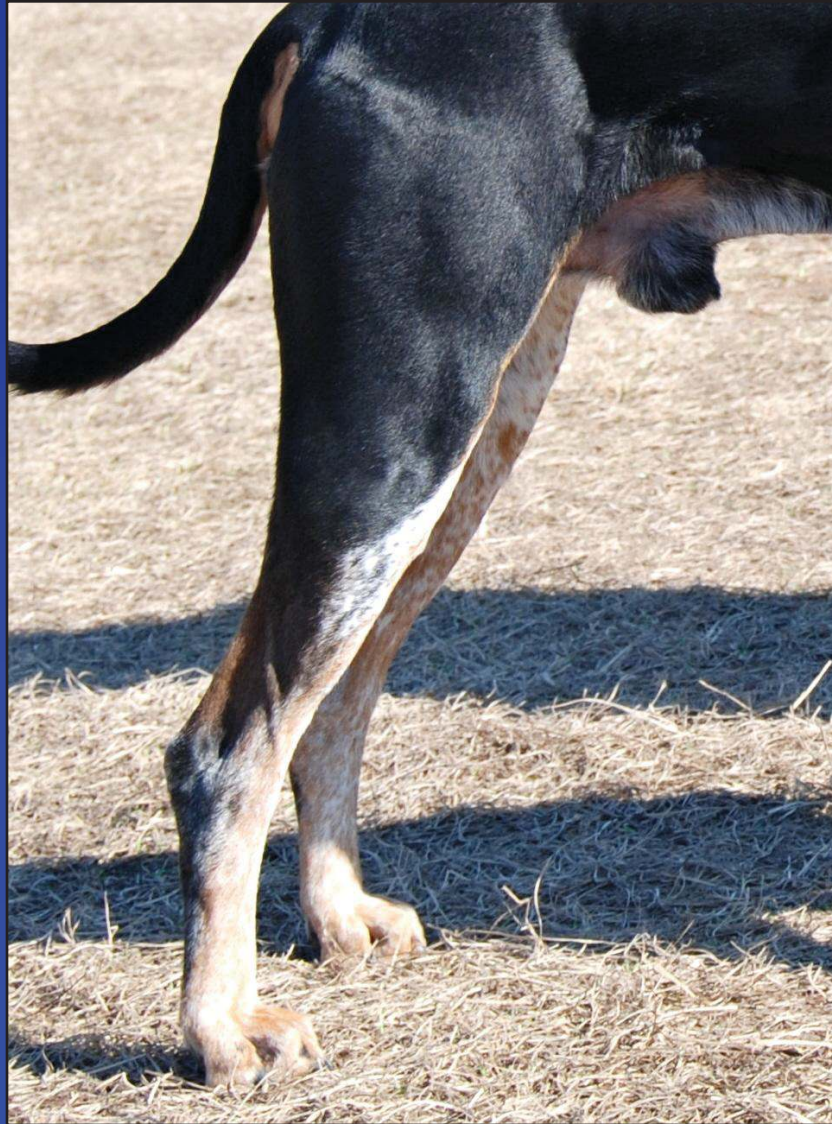
HIPS



**STRONG
WELL-
MUSCLED
NOT QUITE
AS WIDE AS
RIBCAGE**

THIGHS

**MUSCULAR
ABUNDANCE
OF
PROPELLING
POWER**



**FULL AND
STRONG
DOWN TO
HOCK**

HOCKS

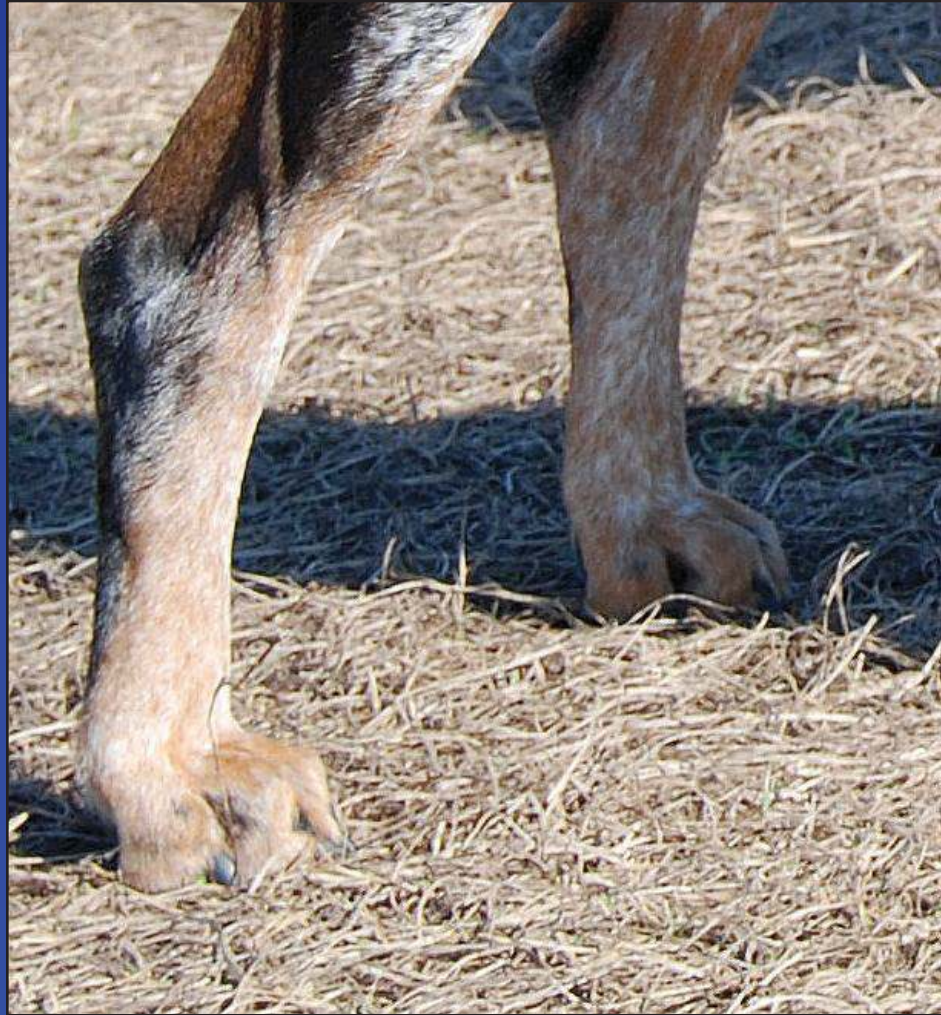
**STRONG,
MODERATELY
BENT**



**FAULT:
EXCESSIVELY
BENT AT HOCK
JOINTS**

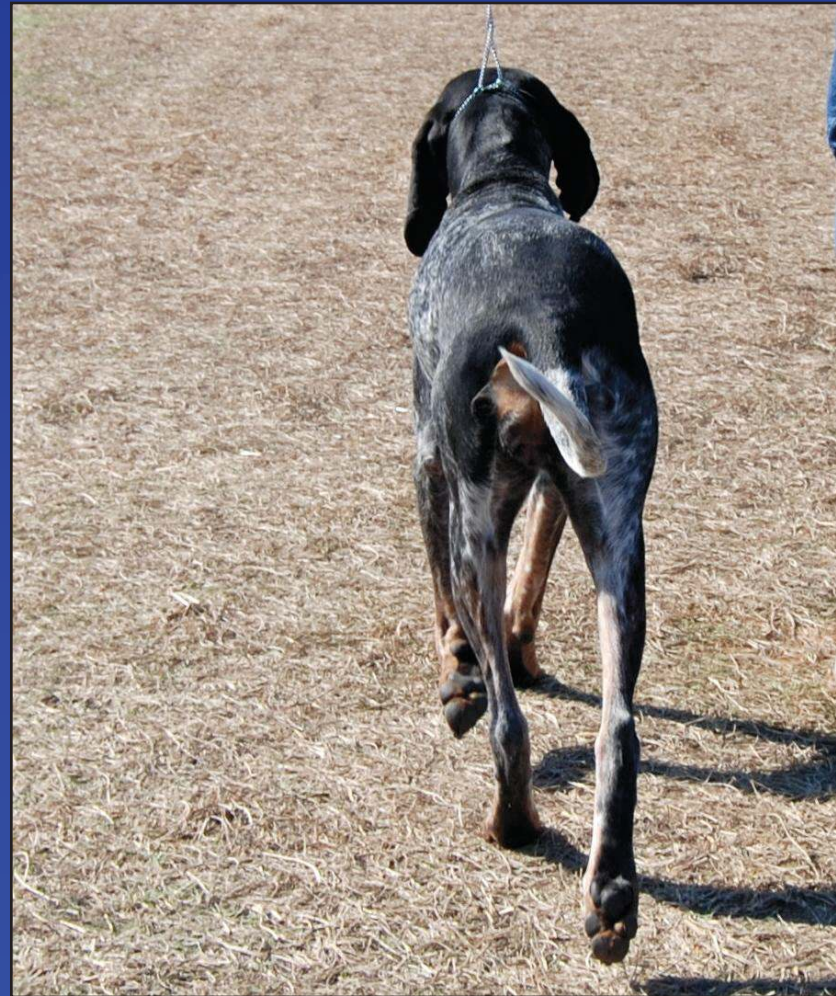
HOCKS

**DEW
CLAWS
REMOVED**



REAR LEGS

**Parallel
from hip to
foot when
viewed
from
behind**



**NO
COWHOCKS**

FEET

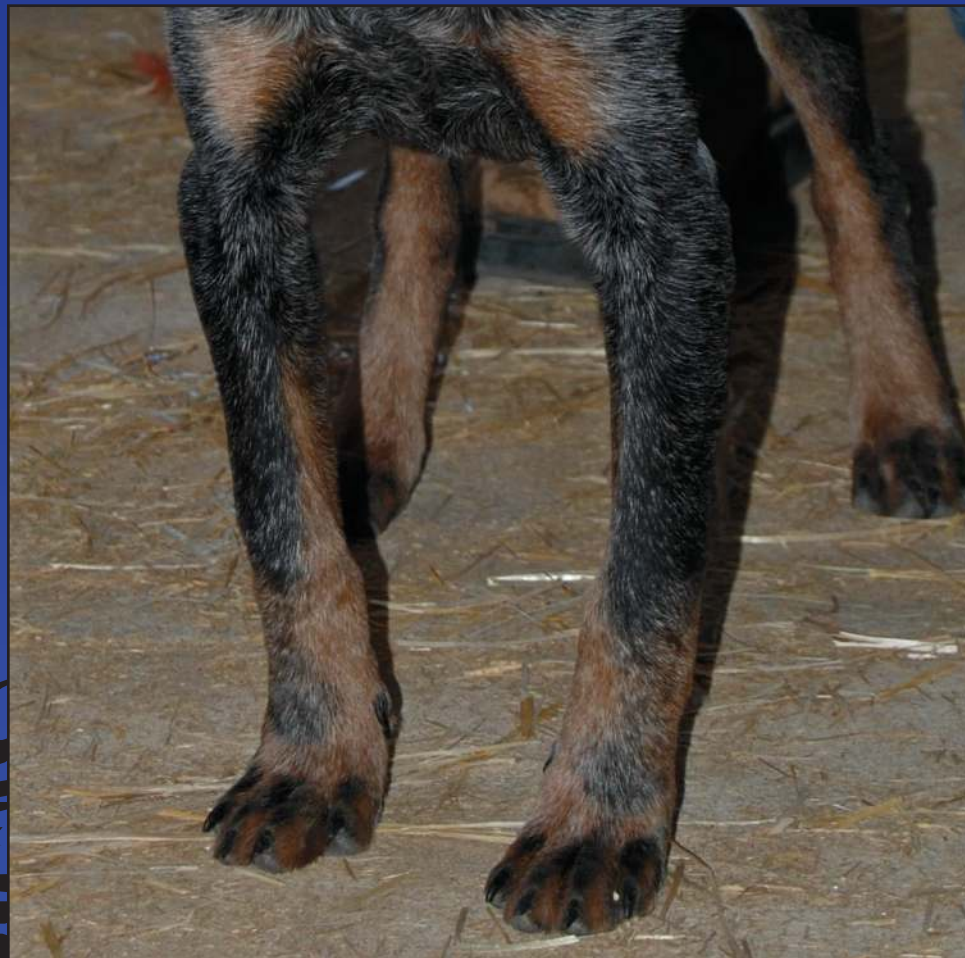
**ROUND
(CAT LIKE)**

**WELL-
ARCHED
TOES**



**THICK,
TOUGH
PADS**

FEET



**CANDIDATE
FOR DR.
SCHOLL'S**

TAIL

- SET SLIGHTLY BELOW LINE OF BACK

**FAULT:
FLAG
TAIL**



- STRONGLY ROOTED
- TAPERING TO MODERATE LENGTH (in balance with to overall length of hound)
- CARRIED HIGH
- HALF MOON CURVE
- WELL-COATED

COAT



**MEDIUM
COARSE**

**LYING CLOSE
TO BODY**

**SMOOTH &
GLOSSY**

FAULT – ROUGH OR TOO SHORT

COLOR



- Dark blue preferred
 - Thickly mottled
- Various black spots on back, ears, sides
- More blue than black preferred
 - Head and Ears predominately black
 - With or without tan markings on cheeks, over eyes, below tail
- Red ticking on feet and lower legs
 - More blueticking than white in coat

Disqualification: Albinism

COLOR



**FULLY BLUE
MOTTLED BODY
PREFERRED OVER LIGHT
TICKING ON THE BODY**

**MORE BLUETICKING
THAN WHITE IN THE
BODY COAT**



***DISQUALIFICATION : ANY OTHER COLOR THAN DESCRIBED IN
STANDARD***

GAIT



**ACTIVE AND
VIGOROUS**

**TOPLINE
CARRIED
FIRMLY**



**HEAD AND TAIL
WELL UP**

Resources

American Bluetick Hound Association

Jerry Turbeville

Home: 843-423-2586

Work cell: 843-229-7455

Personal cell: 843-230-4444

American Kennel Club

Coonhound Events Department

Phone: 1-888-436-4486

Email: coonhounds@akc.org

www.akccoonhounds.org



**AMERICAN
KENNEL CLUBSM**