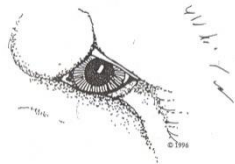


# Chow Chow

Developed by Karen Scholz 100177

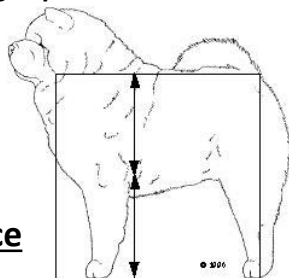
Standard July 29, 2020

Oral Exam: Mouth, Open, Ramp



## General Appearance

Powerful, sturdy, **squarely built**, upstanding, Arctic, medium size, strong muscular, heavy bone  
Compact, short coupled, broad & deep body  
Tail set high, carried close to back  
Four straight, strong, sound legs  
From side **little rear angulation = Stilted Gait**  
Elegance & substance = well balanced whole still  
Smooth or Rough coat with ruff  
Active, alert & agile, Beauty, dignity & naturalness  
**Blue-black tongue, scowling expression**



## Proportion/Substance

Height 17-20 in  
Forechest to point of buttocks = height at withers  
Tip of elbow to ground  $\frac{1}{2}$  height at withers  
Chest level with tip of elbows  
Width of front & rear equal  
Medium size, strong, heavy bone  
Dogs masculine, Bitches feminine

## Head

Large, proudly carried  
**Scowling Expression, dignified, lordly, snobby**  
**Marked brow with padded button above upper inner corner of eye, sufficient skin to form frowning brows**  
**Distinct furrow between eyes from base of muzzle up forehead**  
**Excessive loose skin not desirable**

## Ears

**Small**, thick triangular, slightly rounded tips  
Erect with slight forward tilt  
Wide apart with inner corner on top of skull  
**Disqualification: Drop ear**

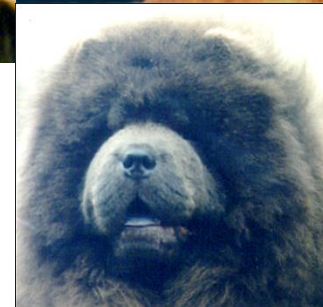


## Eyes

Dark brown, deep set, almond shape, set wide apart & oblique, moderate size  
Eye rims black, lids do not turn in or droop  
**Faults: entropion, ectropion, pupils obscured by skin**

## Skull

Flat, broad, stop moderately defined  
Muzzle & skull Parallel planes  
**Muzzle:** Short,  $\frac{1}{3}$  length of head, Broad, width & depth equal base to tip, square shape, padded  
Upper lip covers lower, not pendulous  
Wrinkles on muzzle not required  
**Solid Black mouth preferred**  
**Lips, gums & tissues of mouth black.**  
**Top surface and edges of tongue solid blue/black - darker is better**  
**Disqualification: Top surface or edges of tongue red or pink or any spots of red or pink**



## NOSE

Large, broad, well opened nostrils  
Red, Black & Cinnamons must have Black nose  
Blue nose is Blue or Slate  
Cream nose can range Black, dark brown to pink

## Teeth

Scissors bite, strong & even

## Neck, Topline, Body

**Neck** Strong, full, well muscled, nicely arched, length to carry head above topline

**Topline** Straight, strong, level to root of tail

**Back** Short close coupled

**Croup** short, broad, level

**Chest** Broad, deep, muscular, well sprung  
Extends to tip of elbow, well let down flank  
Prosternum in front of point of shoulder  
Loin: strong, short, broad, deep

**Fault:** Labored breathing, slab-sided



## Forequarters

Shoulders strong, well muscled, tips of shoulder moderately close together  
55 degree lay back / 110 degree to upper arm  
Length of upper arm not less than shoulder  
Forelegs: from front straight, parallel, wide spaced  
Elbows close to body, from side straight  
Pasterns short & upright

Heavy Bone

## Feet

Round, compact, catlike, thick toe pads  
dewclaws may be removed front or rear



## Hindquarters

Broad, powerful, well muscled, heavy boned  
Hocks well let down & appears straight

Hocks strong, well knit, firm – never breaking

**Stifles joint shows little angulation**

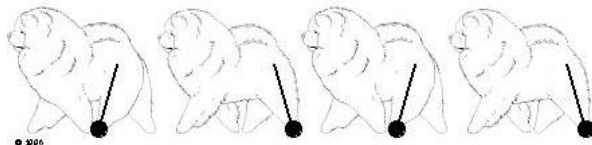
Hind Dewclaws must be removed

From rear legs straight, wide spaced as front

Serious Fault: Unsound Stifle or Hocks

## TAIL

Set high, **carried closely** curling over back



## Gait

Sound, straight moving, agile, brief, quick, Not lumbering

**Stilted critical – rear – leg moves forward with straight pendulum like line, slight bounce in rump- strong thrust – no roll in midsection**

Legs converge with speed

**Proper movement essential**

## Temperament

Keen intelligence, independent, dignity, aloofness, reserved & discerning to strangers

Aggression / Timidity not acceptable

**Deep set eyes – Approach from front!!!**

## Coat, Color

**Rough** Outer coat abundant, dense, straight & offstanding, coarse texture, undercoat soft thick wooly

Profuse Ruff around head & neck. More in dogs

Tail well feathered

Trimming of whiskers, feet & hocks only

**Smooth** Hard, dense, smooth outer coat with definite undercoat, no ruff or feathering

Both double coated



**Colors:** 5 Red, Black, Blue, Cinnamon, Cream  
Solid w/ lighter shadings on ruff, tail, featherings

