

# Coton De Tulear

Standard October 1, 2013

Oral Exam: Front only, Table



## General Appearance

Hardy, Sturdy, small white companion  
Bright intelligence, gay & energetic  
Clownish & lighthearted, calm & easy going  
**Long white dry, profuse, cotton-like coat**  
**Rounded, lively dark eyes**, black on white  
expressive smile & witty personality  
**Longer than tall, slightly arched topline over loin.** Tail happily carried over back moving & down at rest with hook at tip

## Size:

**Height:** Dogs 10-11 in, Bitches 9-10

½ in below & 1 in above tolerance

**Disqualification: Bitch less than 8 ½ or taller than 11**

**Dog less than 9 ½ in or taller than 12 in**

**Minimum height not applicable to puppies under 12 mo of age**

**Substance** : Bitch 8-13 lbs, Dog 9-15 Lbs.

**Proportion** The height measured at the withers is 2/3 the length as measured from point of shoulder to point of buttocks

Developed by Karen Scholz 100177

## Head

Short & Triangular from above

Nose to occiput = 2/5 point of shoulder to point of buttock, Stop is slight

Expression lively, intelligent, inquisitive & happy  
"Joy of Life"



## Skull

From front, slightly rounded, slight frontal groove

Wide in relation to length

Zygomatic arches well developed

**Muzzle** straight, length 5/9 to skull

Large capacious, strong chin

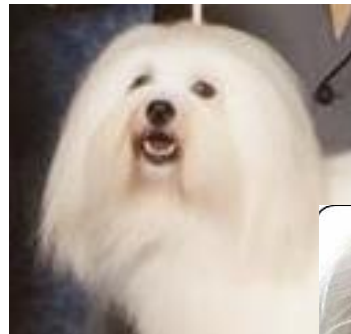
**Lips** fine, tight, black, flews tight

**Disqualification: total lack of pigment on lips**

## Ears

Pendulous, Triangular, Set high on skull, attached at line above eyes

Carried close to cheeks, reach to corner of lips



## NOSE

Black, round triangle, nostrils well open

**Disqualification: total lack of pigment on nose**

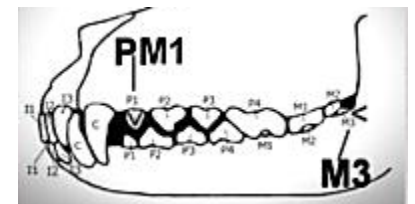
## Eyes

Dark brown or Black, rounded set wide, level

Rims of eyelids Black

**Severe Fault: overly large, bulging, almond, obliquely set**

**Disqualification: any eye color other than brown or black, total lack of eye rim pigment**



## Teeth

Scissors or level, full dentition except M1, PM1

## Neck, Topline, Body

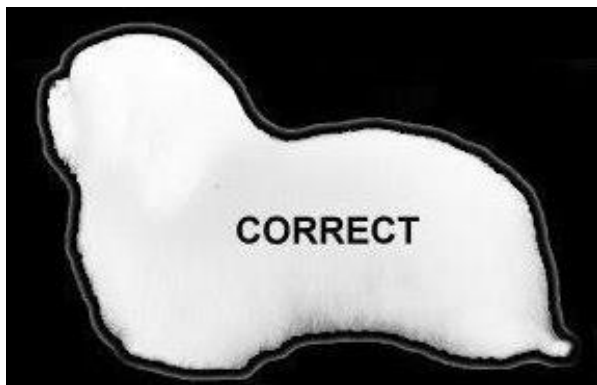
Neck slightly arched, moderate length

Body Height withers 2/3 point of shoulder to point of buttocks

Chest to elbow, prosternum well forward of point of shoulder, well sprung ribs

Loin short, well muscled, wide & strong

Croup oblique, short, muscled



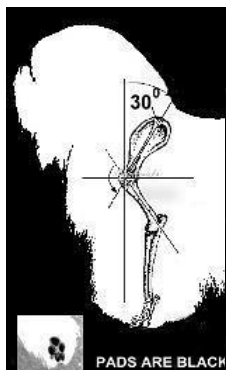
## Forequarters

Shoulders Muscular, 30 degree lay back

Length upper arm = shoulder blade

Legs parallel, verticle, good bone

Pasterns strong, sloping slightly



## Feet

Small, round, tight arched toes, pads black

## Hindquarters

Pelvis 30 degree slope

Hock Dry, well let down

Rear Pastern perpendicular to ground



Topline smooth to loin, arch over

loin to croup

**Fault** Dip behind shoulder, steep or flat croup

Back strong

**Severe Fault: Wheel back or flat back**

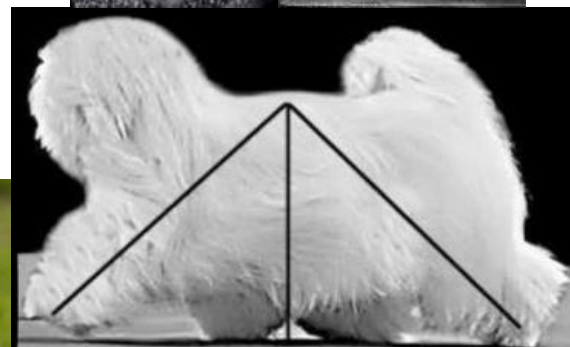
## Tail

Set low, at rest carried below hock w/ tip raised

Moving carried over back with point towards nape, withers, back or loin

**Fault: does not reach hock, complete curl, gay, carried flat over body**

**Disqualification: No Tail**



## Gait

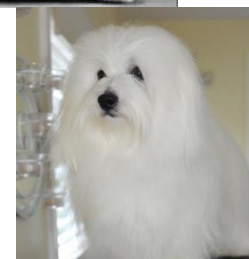
Moderate, free, easy

## Temperament

**Happy, Stable, very sociable**

**Developed by**

**Karen Scholz 100177**



## Coat

Soft, Supple, Cotton texture

Dense, profuse, can be slightly wavy

**Severe Fault: atypical hair, tightly curled, wooly or silky**

Presented Naturally, not parted

Only hair on bottom of feet and between pads may be trimmed, **all other trimming to be penalized as Severe Fault**

## Color

White, few slight shadings of light gray or light tan allowed on ears – not included in 5%

**Serious Fault: any other color except 5% of light tan (dogs over 12 mo old)**

Puppies may have light tan, Dark brown, gray

**Disqualification: Black on body, any age**

