

Pomeranian

Standard July 12, 2011

Oral Exam: Front

General Appearance

Compact, short-backed, active, nordic toy
Double coat, short dense undercoat/ harsh outer
Tail high set, heavily plumed, lies flat on back
Alert & intelligent, bouyant in deportment
Inquisitive, cocky, commanding, animated
Sound in composition & Action



Size / Substance / Proportion

Sturdy, Medium boned

Weight: 3 to 7 pounds, 4 to 6 ideal

Quality favored over size

Proportion: Square with short back

Height at withers = Prosternum to buttocks



Head Developed by Karen Scholz 100177

In balance with body
Tapers from back, wedge shaped
Skull slightly round, not domed
Stop Well pronounced
Expression is foxlike, alert, intelligent

Major Fault: Round, Domed skull



Ears

Small, mounted high, carried erect
Set valued over size

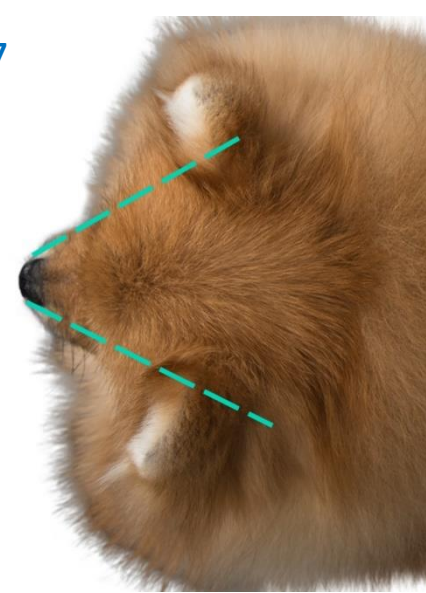


Eyes

Dark, bright, medium size, almond shaped
Set well into the skull
Width between eyes balancing other facial features

Eyerims black, except self-colored in
Chocolate, beaver, blue

Disqualification: Eyes light blue, blue marbled, Blue flecked



Nose: Black, except self-colored in
Chocolate, beaver, blue

Muzzle short, straight, free of lipiness
Not coarse or snipey



Teeth: scissors

1 tooth misaligned acceptable

Major Fault: undershot, overshot or wrye

Neck, Topline, Body

Neck Well set into shoulders, Long to carry head Proud & high

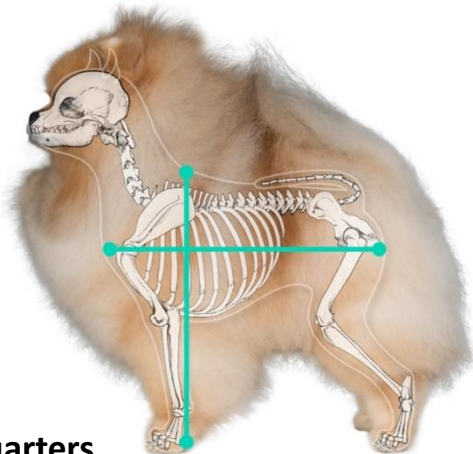
Topline short, level from withers to croup

Chest Oval, tapered to elbows, pronounced prosternum

Body Compact & well ribbed

Back short coupled, straight, strong

Loin Short w/ slight tuck up, **Croup** flat



Forequarters

Shoulders well laid back

Pasterns strong, neither steep nor down

Legs straight, parallel, moderately spaced, set well behind forechest

Elbows close to body, turn neither in or out

Height, withers to elbows = ground to elbows

Feet

Round, tight, cat foot, well arched, compact

Turn neither in nor out,

Standing well up on toes

Dewclaws may be removed

Major Fault: Down in pasterns

Temperament

Extrovert, intelligent, vivacious spirit

Great companion, competitive show dog

Hindquarters

Balanced w Forequarters,

Buttocks well behind set of tail,

Thighs have moderate muscle

Upper thigh and lower leg equal in length

Legs straight & parallel from behind

Stifles strong, moderately well bent, clearly defined

Hocks parallel and perpendicular to ground, strong

Feet as in front, dewclaws may be removed

Major Fault: cowhocks, knees in or out,

lack of soundness in legs or stifles

TAIL heavily plumed, set high, lies straight & flat on back

Major Fault: low tail set



Gait

Good reach and strong drive, efficient, ground covering movement never inefficient or busy

Head carried high and proud, maintaining outline

Smooth, free, balanced & brisk

Double track, converging to center as speed increases

Legs straight forward, neither elbows or stifles in/ out.

Topline remains firm & level, overall balance maintained

Developed by

Karen Scholz 100177

Coat

Double coated, Body w short dense undercoat & long harsh textured guard hair growing through Abundant, standoff

Ruff framing head & over shoulders and chest

Head & leg hair packed & shorter

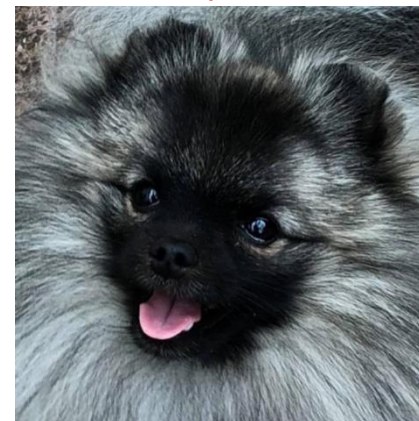
Forelegs well feathered, Thigh hairs form skirt

Tail profuse, straight, long, harsh plume

Females may not carry as much coat

Cotton coat undesirable

Major Fault: Soft, flat or open coat



Color

All colors, patterns, variations allowed & equal

Major Fault: Distinct white on whole foot on any color except white or parti



Disqualification:

Eyes light blue, blue marbled, blue flecked

All colors, patterns, and variations there-of are allowed and must be judged on an equal basis.

RED

ORANGE

CREAM

ORANGE SABLE



WOLF SABLE

EXTREME SABLE

BLACK

BROWN

BLUE



WOLF SABLE

EXTREME SABLE

BLACK

BROWN

BLUE

RED

ORANGE

CREAM

ORANGE SABLE



Extreme Piebald



Tan Points – Any solid color or allowed pattern with markings sharply defined above each eye, inside the ears, muzzle, throat, forechest, all lower legs and feet, the underside of the tail and skirt; the richer the tan the more desirable.

Black & Tan



TAN POINTS

CHOCOLATE & TAN

BEAVER

MERLE



Color on the head and body with white legs, chest and collar.

Developed by
Karen Scholz 100177



PARTI

IRISH

PIEBALD

BRINDLE