

Schipperke

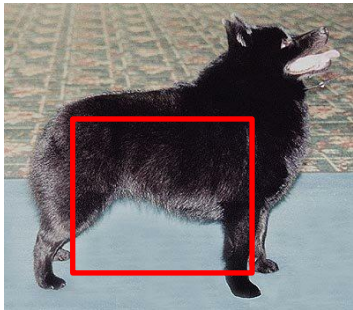
Schipperke Standard January 1, 1991

Oral Exam: Front only



General Appearance

Agile, active watchdog, hunter of vermin
Small, thickset, cobby, black, tailless dog,
Fox-like face
Square profile, distinctive coat,
stand-out ruff, cape and culottes
Silhouette slope, shoulders to croup



Proportion

Height 11-13 in Dogs; 10 -12 in bitches
Square in profile

Substance

Thickset

Developed by Karen Scholz 100177

Head

Expression Questioning, mischievous,
impudent & alert, never mean or wild

Skull Length of muzzle slightly less than length
of skull



Ears

Small, triangular, high on the head, very erect

Disqualification: A drop ear or ears



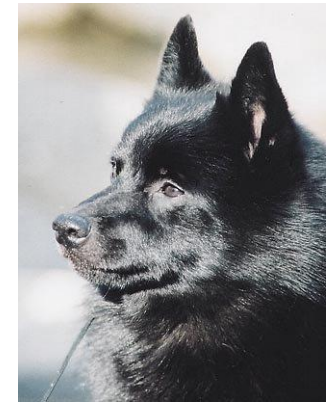
Eyes

Small, oval, dark brown
Placed forward on the head



Skull

Medium width, narrowing toward muzzle
In profile, slightly rounded
Upper jaw moderately filled in
Head forms a wedge
Tapers back of the skull to nose
Stop is definite, not prominent



NOSE

Small and black

Teeth

Scissors or level. Any deviation is to be severely penalized.

Neck, Topline, Body

Neck Moderate length, slightly arched and in balance

Topline Level or sloping slightly from the withers to the croup

Body

Chest is broad and deep, and reaches to the elbows

Well sprung ribs, wide behind shoulders, taper to the sternum

Forechest extends in front of shoulders

Loin Short, muscular, moderately drawn up

Croup broad, well-rounded



Forequarters

Well laid back, legs straight
legs placed well under the body

Pasterns short, thick, strong, slight angle

Dewclaws are generally removed

Feet

Feet are small, round and tight

Nails short, strong and black



Hindquarters

Slightly lighter than forequarters

Well muscled, in balance with front

Hocks well let down

Stifles are well bent

Extreme angulation penalized

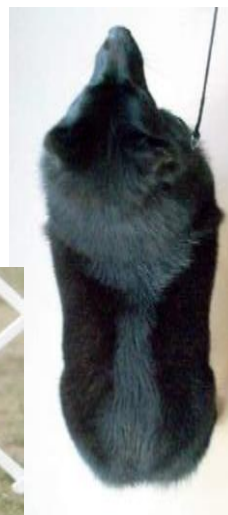
legs extend straight down, hip to hock to feet

Dewclaws must be removed

TAIL

Tail docked

No tail is visually discernible



Gait

Smooth, coordinated, graceful

double tracking,

tendency to converge as speed increases

Good reach and drive

Topline remains level or slightly sloping

Elbows close to the body

legs form a straight line shoulders to toes

(from hip to pads in rear)

Temperament

Curious, interested, excellent & faithful watchdog

Reserved with strangers, ready to protect

Displays confident, independent personality

Coat, Color

specific pattern

short on the face, ears, front of the forelegs, hocks;

Medium length on body

Longer in the ruff, cape, jabot and culottes

Ruff begins back of the ears, extends around neck

Cape forms an additional distinct layer extending beyond the ruff

Jabot extends across the chest and down between the front legs

Hair down middle of back, behind cape, continuing over rump, lies flat. Slightly shorter than cape but longer than the hair on sides of body legs

Coat on rear of the thighs forms **culottes**, which should be as long as the ruff.

Lack of differentiation in coat lengths should be heavily penalized, as it is an essential breed characteristic

Texture Abundant, straight and slightly harsh
Softer undercoat dense & short on body, very dense around neck, making the ruff stand out

Silky coats, coats over 3 in length, very short harsh coats are incorrect

Outercoat must be black. Any color other than a natural black is a disqualification
Undercoat, may be slightly lighter
Graying due to age (seven years or older) or occasional white hairs should not be penalized