

Russian Tsvetnaya Bolonka

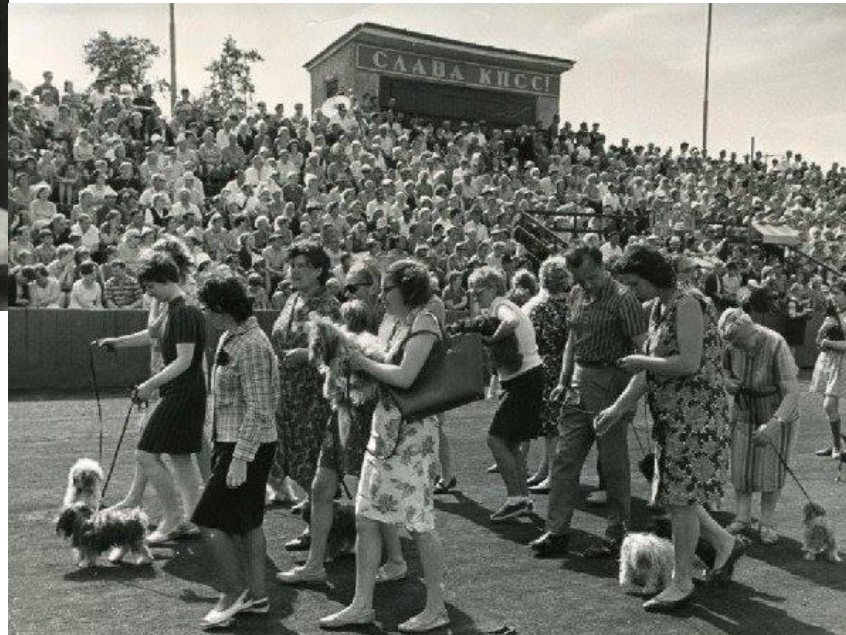


History of the Russian Tsvetnaya Bolonka

- The Bolonka was created by a group of enthusiasts whose goal was to create a small companion dog which would be ideal for apartment living. By the end of the '50s, through careful and rigorous selection, mainly by phenotype, and later, by the quality of the offspring, a true breed type was obtained, which received the status of a breed.
- Additional small breeds were later introduced such as Maltese, Shih Tzu, and Bolognese, among others, this was to improve the coat and to create a non-shedding breed. The breeders were restricted to solid colors other than white, however, allowing silver or tan point markings.
- The official RKF standard was accepted in 1966.



Some photos of the early Russian Tsvetnaya Bolonka roughly the 1940's



RUSSIAN TSVETNAYA BOLONKA DESCRIPTION

From the Standard: The Bolonka was developed to be the ultimate house pet and companion. The Russian Tsvetnaya Bolonka is a small, sturdy, balanced dog, slightly longer than tall. The breed appears disheveled due to the wavy or curly coat. He moves gracefully with the tail carried over the back. He is friendly to all and shows no sign of aggression. He is sweet, loving, intelligent and willing to please.

The Bolonka should never appear fine-boned. The coat should be long with and undercoat. Below is a good examples of the proper coat and tail set as well as the head, beard and mustache.



Below is a photo of a typical brown Bolonka with moderate wavy/curl. You can see the undercoat here which makes the coat appear thick. This dog has a lovely beard and mustache. You will notice the hair on the head is pulled up in a ponytail to remove it from the dog's eyes.



SIZE, PROPORTION, SUBSTANCE

From the Standard: The body is slightly (not more than 15%) longer than the height at the withers, just off-square, measured from the point of shoulder to the ischium. The height is up to 10 1/4". The height at withers over 11 inches is a disqualification. He is moderately boned. The ideal weight for males and females is 7 – 9 pounds.

Note: The ideal is 7-9 lbs. however, many are larger and smaller than indicated. A Bolonka of larger size should not appear high on leg. A smaller Bolonka should have moderate bone and never appear slight.

Anything over 11" is a disqualification.



This is a smaller female. Her coat is correct however, it is not possible to determine bone without placing hands on the dog.



This is a larger, still within standard size male. His coat is correct. He is a bit straight in the rear.



The 1st hallmark of the breed is the head

This dog has the required short muzzle which is approximately more than 1/3 the length of the head. This dog's nose, does appear to be turned up however it is not. This is due to an undershot bite



Note: A scissor bite is preferred, however, A level or slight undershot bite is tolerated. Overshot or Wry mouth is A disqualification. Crowded teeth are acceptable and common.

The eyes should be of Medium size. A large eye should be penalized.

Another example of a nice head. This dog has the appropriate length of muzzle and is level as required. The length of muzzle is important , too long or too short should be penalized.



Head

From the Standard: The expression is sweet, alert, and intelligent. Eyes are dark brown. Lighter brown color is allowed in brown, fawn, and cream dogs. *Blue or partially blue eye(s) are a disqualification.* The eyes are of medium size, rounded, and set on the frontal plane. Eyelids are tight. Eye rims are black or match the coat color. Cheeks are slightly rounded. Ears are moderate size, V shaped with slightly rounded tips, set moderately high, lay close to the skull and carried dropped. When alert, the ears lift at the base. The head is in proportion to the body. The skull is slightly prominent and slightly rounded, with a well-defined stop. The muzzle is short, slightly more than one third of the length of the head, slightly tapered to the nose. The nasal bridge is straight and wide at the base. Lower jaw is moderately wide. The nose is small, vertical in profile, with nostrils that are well opened. The nose is solid black or matches the coat color. All shades of solid brown pigmentation are allowed in brown dogs. *A spotted or flesh-colored nose is a disqualification.* The lips are tight, with edges that are black or similar to the coat color. A scissors bite is preferred; a level bite or a slightly undershot bite is tolerated. A complete set of incisors and canines is desired. *An overshot bite or wry mouth is a disqualification.*



Typical Russian Tsvetnaya Bolonka Expression.



The Bolonka should have a sweet expression of endearment.



The beard and moustache are another hallmark of the breed. The Bolonka should have several inches of beard or mustache to give it the character of a Bolonka.

From the Standard: Complete lack of beard and moustache is a disqualification.



Neck, Topline and Body

From The Standard: The neck is average length, sloping, dry, and well-muscled. The topline is level with a strong, broad, well-muscled back. The body is compact with a deep chest that is moderately broad and oval shaped with the brisket extending to the elbow. Ribs are well sprung. The underline is moderately tucked up. The loin is short and slightly arched. The croup is rounded, medium length, rather broad, slightly sloping, and muscular. The tail is medium length, set at moderate height, and curls over the back so the tip is close to the back. The tail is completely covered by coat. The tail may not be docked. *A missing or docked tail is a disqualification.*

NOTE: Topline level however, loin has a slight arch. The tail should be carried over the back with the tip close to the back. Never flagged



This male appears long in the loin and lacks the arch.



This male is just off square with a slight arch in the Loin, level topline and appears to have a deep chest. He has lovely curl and dense undercoat.



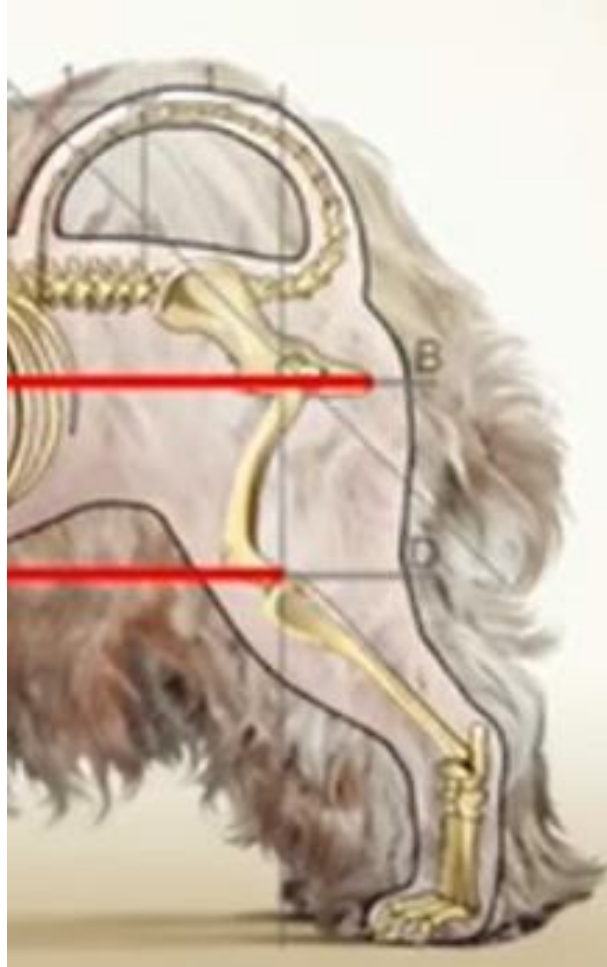
The Fore Quarters

Forequarters:

Legs are straight, parallel, and moderately wide when viewed from the front. The shoulder blades are well muscled, and their angulation with the shoulders is 100 to 110 degrees. The forelegs are straight and parallel, with elbows tight to the body. The length from the withers to the elbow is equal to the length from the elbows to the ground. Pasterns are strong and nearly upright. Dew claws may be removed. The feet are small and round with arched, tight toes. Pads and nails are dark.[Never to appeal high on leg or short on leg.]



Hind Quarters



Hindquarters:

The hind legs are straight and parallel. The hocks are strong, and moderately angulated, medium in length. They are set moderately wide when viewed from the rear. The rear pasterns are medium length and upright. The rear feet are a little smaller than the forefeet, oval shaped, with arched, tight toes. Pads and nails are dark.

LOVELY EXAMPLE OF A RUSSIAN TSEVETNAYA BOLONKA IN FULL COAT



The Second Hallmark of the breed.

The Bolonka Coat

The coat is long, dense, thick, soft, and supple, with a well-developed undercoat. The coat forms large curls (preferred) or may be very wavy. The head has a well-developed beard and moustache. *Complete lack of a beard and moustache is a disqualification.* The coat is never deliberately parted. Hair on top of the head may fall naturally or be held up with a small bow on the top of the head. Feet may be neatened. No other trimming of the coat is allowed. May appear disheveled due to curl however, must be mat free when exhibited.



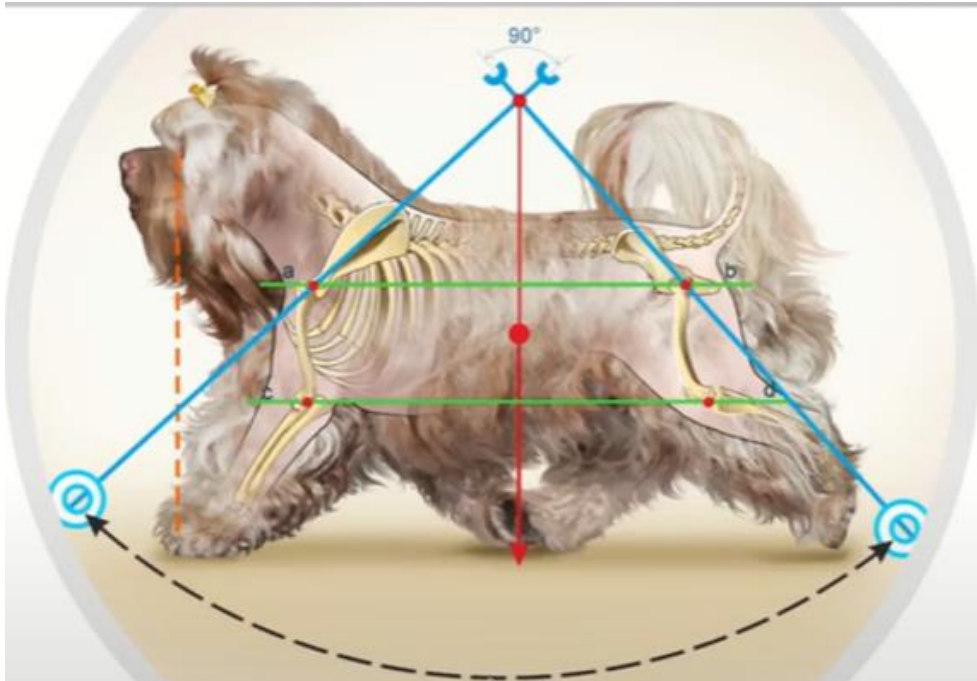
Hair on top of the head may fall naturally or be pulled up with a small bow of any color.

Note : Ponytail should not be backcombed, should fall natural. More than one band on ponytail may be used to hold hair out of the eyes.



MOVEMENT AND TEMPERAMENT

The movement is smooth and flowing with good reach in front and strong rear drive.



The Russian Tsvetnaya Bolonka is even-tempered, intelligent, friendly to all, and *should never be shy or show aggression of any kind.*



Russian Tsvetnaya Bolonka color



All colors are permitted except solid white, spotted, parti-color or merle. Small white markings on the toes and fore chest are permitted.

A solid white, spotted, parti-color or merle coat is a disqualification.

Note: Bolonka change colors many times in their lives, and some will have demarcation lines showing the change. This is acceptable and should not be penalized. Some examples are Sables, they come in both brown and black versions. Fawns can have black or brown pigment. There are Black & Tan as well as Brown & Tan. Black that changes to silver. Eyes color as well as leather color must match coat.



Fawn Sable and Red Sable



Russian Bolonka puppies of many colors



This picture shows several colors;
Black, brown, Wolf grey, black &
tan, Gold sable, Black mask sable





kennel
Russkaya Roskosh
russkaya tsvetnaya bolonka

Brown and Black puppies

Black & Tan and Brown & Tan puppies



Sable Adults



On the left side; Brown sable, this dog was born brown and stayed that way until it was over 6mo. Lightened with age.



Above on left, Wolfgrey born black, on right, Brown Sable born red.



Brown and Black Adults



Black Bolonka in full coat



Adult Brown, medium shade



The Brown Bolonka

The brown Bolonka can vary from light red to dark chocolate.

Note that the nose, eye rims and lips match the coat color.

Many fade over time to eventually become almost a brown silver in color.



Black and Tan



There are Black with tan points as well as Brown with tan points. Some have an abundance some have little.

Example on left this dog is clearly bi-colored. The dog on the left there is no tan on the face however the feet do have it. Both are acceptable.



This ends our portion on color. Just remember no white, spotted, parti-color or merle



Disqualifications

- Height at withers over 11 inches.
- Blue or partially blue eye(s).
- A spotted or flesh colored nose.
- An overshot bite or wry mouth.
- A missing or docked tail.
- Complete lack of beard and moustache.
- Any spots, markings (except where mentioned), solid white, parti-color or merle coat color.

- Preferred 7-9 lbs., sturdy dog with moderate bone
- Eyes & eye rims should be dark or match coat color
- Crooked teeth should not be penalized
- Tail should be over and near back never flagged
- Must have visible beard and moustache
- Small amount of white is allowed on toes and chest
- Bolonka may appear disheveled however must be groomed and mat free when exhibited. Ponytail never back combed, should fall natural. May use double bands to keep hair out of eyes.



Thank you for your interest in our breed.

- For more information on the Russian Tsvetnaya Bolonka please visit our club web site at www.rtbca.com or contact our secretary at secretaryrtbca@gmail.com
- We are on Facebook at Russian Tsvetnaya Bolonka Club of America.

